

HAMPSHIRE

Fall 2016

Heartbeat



SOLUTIONS

FOR

Success

"Quality breeding stock always available, on the farm prices to fit anyones budget, money back guarantee, "spider" free, honest birthdates."



Bobendrier Boys 15-16 RR

We got a nice set of March born lambs from him this year. Watch for more of his off-spring! Congratulation to the Dave Jutenen Family on their success this summer with lambs from 15-16!

Champion Ram at the 2016 Wisconsin State Fair, Minnesota State Hampshire show, and Reserve Champion at the 2015 Iowa State Fair.



Bobendrier 15-15

Champion Ewe 2016 Iowa State Fair.

Champion Ewe 2016 Minnesota State Fair



Bobendrier 15-11

1st place January Ewe, MN state fair,
2nd place January Ewe, IA state fair.



Bobendrier Boys 16-26

Watch for our flocks at Louisville!

BOBENDRIER BOYS

1351 Highway 75 | Pipestone, MN 56164
shebob7@gmail.com | 507.215.0334

Check our website,
bobendrierhampshires.com
for their availability

BOBENDRIER HAMPSHIRE

1607 90th Ave | Pipestone, MN 56164
jcbobendrier@gmail.com | 507.825.4072

CONTENTS

- 4 **CALENDAR OF EVENTS**
A list of upcoming Hampshire events.
- 6 **PRESIDENT'S MESSAGE**
Updates from Tom Bobendrier
- 7 **LOUISVILLE'S HAMPSHIRE HULLABALOO**
A piece by the "Old Timer" on North American International Livestock Exposition.
- 9 **AHJSA THANK YOU**
Thanks to all breeders and business who have supported AHJSA.
- 13 **CALL TO THE 127TH MEETING**
Information regarding the annual AHSA meeting.
- 15 **WE ARE AGRICULTURE**
Article by Kate Lambert on the impact of Hampshires.
- 18 **TAYLOR FAMILY FEATURE**
A feature on The Taylor Family, Jadewood Valley.
- 20 **NATIONAL SALE CHAMPIONS**
Photos and recognition of Champions at National Sale.
- 20 **4-H LAMB PROJECT BY NUMBERS**
Article written by Jackie Bounds.
- 23 **FUTURITY NOMINEES**
Congratulations to all breeders and juniors nominated ewe lambs in 2016.
- 24 **HAMPSHIRE IN 1984**
Take a look back at Hampshires in 1984.
- 26 **JIM MILLER FAMILY FEATURE**
A feature on The Miller Family
- 33 **HAMPSHIRE YOUTH CONNECTION**
Information on animal care and well-being.
- 34 **ALL AMERICAN JUNIOR SHOW CHAMPIONS**
All of the Junior Show Champions.
- 35 **JUNIOR SPOTLIGHT**
Featuring Amanda King.
- 36 **AHSA SPONSORED SHOW WINNERS**
Recognizing junior show winners.
- 38 **STARS OF LOUISVILLE HAMPSHIRE SALE**
Information regarding the Hampshire Show in Louisville.
- 44 **STATE HAMPSHIRE ASSOCIATIONS**
Contact information for all State Hampshire Associations.
- 46 **AHSA BOARD OF DIRECTOR ELECTIONS**
Director positions up for election.
- 49 **AHSA JUNE ONLINE SALE RESULTS**
See the results from the Online Sale on June 14th, 2016.
- 51 **HAMPSHIRE SCENES**
All things Hampshires and scenes at various shows.

Calendar of Events

OCTOBER 20

South Carolina State Fair Open Hampshire Show

OCTOBER 25

Hampshire Heritage award application deadline

OCTOBER 27

Hancock Bred Ewe Sale hosted by wlivestock.com

OCTOBER 29

North Star Sale, Pipestone, MN

NOVEMBER 1

Deadline for submitting Futurity point forms to

AHSA office

NOVEMBER 3

Hancock Exposed Ewe Lam Sale hosted by

wlivestock.com

NOVEMBER 11

NAILE Junior Breeding Sheep Showmanship -10 AM

NAILE Junior Market Lamb Showmanship -4 PM

NAILE Lead Line -4 PM

NOVEMBER 12

National Hampshire Junior Show

(2nd breed following Oxfords)

Stars of Louisville Hampshire Sale -6 PM

(or following the junior show)

NOVEMBER 14

127th AHSA Annual Meeting-6:30 PM

NOVEMBER 15

National Hampshire Show- 8 AM

NOVEMBER 26

Illini Bred Ewe Sale, Bloomington, IL

JANUARY 25-28

ASI Convention, Denver, CO

MAY 11-13

Eastern Regional Hampshire Sale, Eaton, OH

JUNE 19-24

National Hampshire Sale, Sedalia, MO

JUNE 30 - JULY 2

All American Junior Show, Madison, WI

Official Publication of the American Hampshire Sheep Association

PO Box 231, 305 Lincoln

Wamego, Kansas 66547

Ph: 785-456-8500 Fax: 785-456-8599

asregistry@gmail.com • www.hampshires.org

EXECUTIVE SECRETARY: Jeff Ebert

ASSOCIATED REGISTRY STAFF: Cheri Kirk Janette Fund, Morgan Huelsman

AHSA Board of Directors

President: Tom Bobendrier Vice President: Scott Van Sickle

DISTRICT 1 - Lisa Hanson, OR
(503) 881-6550 - alekhanson@live.com
3rd term expires 2018

DISTRICT 2 - Jason Simpson, CO
(970) 371-0276 - jsimponcl@aol.com
1st term expires 2017

DISTRICT 3- Randy Pirtle, OK
(918) 440-4553 - randy.pirtle@okstate.edu
2nd term expires 2016

DISTRICT 4 - Brent Larson, SD
(605) 633-1561 - larsonb76@gmail.com
1st term expires 2016

DISTRICT 5 - Phyllis Davison, KS
(316) 841-8223 - phylldavison@gmail.com
3rd term expires 2018

DISTRICT 6 - Debbie Deal, OH -
(330) 607-1347 - ddeal1957@aol.com
2nd term expires 2017

DISTRICT 7 - Scott Van Sickle, KY
(270) 792-7173 - vansickleantiquityridgefarm@gmail.com
2nd term expires 2018

DISTRICT 8 - David Lytle, PA
(484) 678-9291 - dave.lytle@churchdwright.com
3rd term expires 2016

AT-LARGE - Tom Bobendrier, MN
(507) 215-0334 - shebob@svtv.com
2nd term expires 2018

AT-LARGE - Derick Miller, TX
(806) 239-3670 - millerpecanfarms@gmail.com
1st term expires 2016

AT-LARGE- Wayne Belden, IN
(219) 869-1851 - wbelden@infarmbureau.org
2nd term expires 2017

Office Fee Schedule

A. MEMBERSHIPS

1. New Senior Membership	\$25
2. Annual Senior Dues	\$25
3. New Junior Membership	\$15
4. Junior Dues	\$15

B. REGISTRATIONS

Postmarked Sept 1 - April 30	
1. Animals under 12 months	\$4
2. Animals over 12 months	\$8
Postmarked May 1 - August 31	
1. Animals under 12 months	\$6
2. Animals over 12 months	\$12

C. TRANSFERS

1. Under 90 Days (from date of sale)	\$10
2. Over 90 Days (from date of sale)	\$20

D. DUPLICATE CERTIFICATE \$5

E. RUSH FEE (PER TRANSACTION) \$5

IF YOU WOULD LIKE TO HAVE YOUR SHOW OR SALE LISTED IN OUR CALENDAR OF EVENTS AND ON THE HAMPSHIRE WEBSITE, PLEASE EMAIL US THE INFORMATION. FOR SALES TO BE LISTED YOU MUST BE SELLING REGISTERED HAMPSHIRE.

BUILDING BLOCKS FOR THE FUTURE

"STRAIGHT EDITION"

RESERVE CHAMPION RAM
2016 MINNESOTA STATE FAIR
SIRE: FINAL EDITION



"CORNERSTONE"

SUPREME CHAMPION RAM
2016 MINNESOTA STATE FAIR
TWIN TO 6422 SIRE: REMEDY



6422

GRAND CHAMPION RAM
2016 NATIONAL HAMPSHIRE SALE
TWIN TO: "CORNER STONE" SIRE: REMEDY
AT STUD FOR BOBENDRIER BOYS HAMPS



5647

SR CHAMPION RAM
2016 NATIONAL HAMP SALE
SIRE: MILESTONE

6463

JR CHAMPION EWE
2016 NATIONAL HAMPSHIRE SALE
SIRE: ROLL THE DICE



6477

RESERVE JR CHAMPION EWE
2016 NATIONAL HAMPSHIRE SALE
SIRE: REMEDY



42ND ANNUAL NORTH STAR SALE

OCTOBER 29TH, 2016

PIPESTONE CO. FAIR GROUNDS | PIPESTONE, MN

SELLING:

BRED YEARLINGS

BROOD EWES

OPEN & EXPOSED EWE LAMBS

EWES WILL SELL BRED TO:

"REMEDY"

"UNFORGETTABLE"

"SPECIAL EDITION"



PINE LAWN FARMS

MIKE, GARRIE, JASON & KYLE CASKEY

1222 171ST ST. HOLLAND, MN 56139

PH: 507.347.3229 | MCCASKEY@WOODSTOCKTEL.NET

WWW.CASKEYPINELAWNFARMS.COM

CHECK OUT OUR WEBSITE AFTER OCTOBER 15TH FOR
PHOTOS AND VIDEOS OF OUR CONSIGNMENT.

Greetings from your President

Hampshire Breeders,

I'm hoping everyone has had a great summer. We certainly have had awesome weather here in the Upper Midwest. Plenty of mid-summer moisture, in conjunction with average to above temperatures have made excellent crop conditions as we enter the harvest season. It's also been a good summer for growing and marketing sheep. The lambs in our area have also had good growing conditions, and the slaughter prices of fat lambs have been steady to climbing all summer long. Considering the value of other commodities and meat markets; I'd say sheep producers have been quite fortunate!

According to my travels this summer, and from others I have spoken with, all indications are that Hampshires are definitely throwing punches with lots of power! The mid-west state fair shows have been spectacular in quality and quantity. It makes Hampshire breeders proud to hear judges favorable comments about about breed character, structural soundness, and consistency from top to bottom that the Hampshire classes have offered.

Kudos to breeders across the USA for their diligence toward providing high quality entries to shows and expos. This level of quality drives interest toward our breed, and interest drives marketing opportunities for all of our members. If you have been watching the weekly updates from the office, you've noticed the Supreme Champion honors that many Hampshires across the country have earned.

Also encouraging to our membership is our association office performance. Here's an opportunity to shout out to Jeff and his staff in Wamego, KS for very good turn-around times on both registration and transfer work this past spring and summer. Numbers have been good, and financially we are sound. We have had good participation in the applications for additional premiums at Hampshire Junior shows, and they have been spread throughout all areas of the country.

As we approach fall, I wish all members the best of luck with their breeding programs. For me it's an anxious time: waiting for the results of the matings of new and old genetics. Good luck also to those participating in the fall season shows and sales. Keep in mind an elite entry for the Stars of Louisville sale that our association sponsors. I hope to see many of you in Louisville. If this summer was any indication, we should have lots of exciting competition!

Tom Bobendrier, Pipestone, MN

ADVERTISING IN THE HEARTBEAT

Printed three times a year

WINTER ♦ SPRING ♦ FALL

You can choose to run an individual ad in a single issue of your choice, or choose a three-issue contract. Contract ads will be placed in three consecutive issues of the Hampshire Heartbeat. Contracts begin with the next available issue and run through the next two consecutive issues. Either an individual ad or a contract can be purchased at any time throughout the year. Prices for both types are listed below or advertises who provide ads ready for publication will receive a 15% discount on the listed prices. You may find more information at www.hampshires.org.

DEADLINES

Winter Issue: January 15th

Spring Issue: May 1st

Fall Issue: September 15th

Ad size or Placement	Single Issue Price	Three Issue Contract Price
Inside Covers	\$450.....	\$900
2-Page Spread.....	\$550.....	\$1100
Full Page	\$350.....	\$700
3/4 Page	\$300.....	\$600
2/3 Page	\$275.....	\$550
1/2 Page	\$250.....	\$500
1/3 Page	\$210.....	\$420
1/4 Page	\$165.....	\$330
1/6 Page	\$125.....	\$250
1/8 Page	\$100.....	\$200

LOUISVILLE'S HAMPSHIRE HULLABALOO

BY THE "OLD TIMER"

"Louisville". All you have to say to any purebred sheep man is the word "Louisville" and they automatically know you are talking about the North American International Livestock Exposition...and they always know when...the two weeks prior to Thanksgiving Week, with the sheep going for the most part in the second week. Held at Louisville's fantastic exposition center, directly across the Waterson Expressway (I-264 by pass) from the Louisville Airport with I-65 running alongside the eastern section of the fairgrounds. Nowhere in American is there such a large exposition center with so many acres under roof! It is a special experience simply to see the place. The presence of Hampshire Sheep and their breeders and boosters make it even better, certainly more exciting. Each year adds to the mystique of the event. Webster defines Hullabaloo as a "Hubbub" or an "Uproar". The Louisville Hampshire Show is all of that!

Hampshires are indeed the attraction that draws their fans to Louisville, but it is those "fans", the leaders of the breed, past, present and future that sets the tone for the breed. And in this sense, they in fact create the aura that makes the event so attractive and special. When this major show was transferred from Chicago to Louisville, the Holiday Inn South was designated as the Sheep Headquarters; most visitors tried to stay there and most major breeds held their banquets and annual meetings at the location. As the Exposition Center was enlarged with multiple additions and more banquet rooms available on the Sheep Wing, these banquets and annual meetings were transferred to the show location. An element of congeniality was lost in this process that is regrettable. The ghosts of Hampshire Heroes of time past waft over all Hamp activity in Louisville today. Buster Wilson of Virginia, Bill Heggemeier of Illinois, Bob Reed of Willobee Farm in Illinois, Dave Harmann of Van Vleck Farm in Connecticut, Don Pullin of Iowa, Pete Clark of Three Meadows Farm in Vermont, Dan Schlichter of Ohio, Bruce Lane of California and then Missouri are a few of the names that added so much to the prestige of the show. Some of these folks still return as visitors, such as DAVE HARMANN, who now lives in Ohio and gets down for a couple of days to see the shows and check on the races at nearby Churchill Downs.

The Minnesota Mob has become a formidable force in the Louisville Shows in recent years. Led by MIKE CASKEY with his Pine Lawn Hampshires at Holland, and his son JASON; Mike is also Director of the Pipestone Project and a former 3-year football starter for the Minnesota Golden Gophers. Also from this same area are the BOBENDRIERS, led by CHUCK and his sons, TOM & DAVID...all carrying on the high spirit of Chuck's Late father, Peter Bobendrier. These flocks are highly competitive and must be reckoned with each year. There are now two separate Bobendrier units to contend with, in addition to Caskey. It is also interesting to note that both Mike Caskey and Chuck Bobendrier are former AHSA Presidents; Tom Bobendrier is the current President. Also from this same "neck of the woods" are JAKE and DAVID HERRIG of Slayton; they've brought in a Champion or two in recent years. Jake also has a small flock of competitive Southdown's. Then from this same area a trio of veteran Hamp breeders who are often on hand; they are ROBERT KOEHLER of Slayton, REID MERRILL of Canby and ART FRAME of Worthington. Sometimes these guys will bring an entry or two, but most times they are simply on hand to see the show and visit.

Last year a relative newcomer, Rodney Scheller of Monticello dominated the Hampshire ram show as he won Grand Champion Ram as well as Reserve Senior Champion Ram with his Held and Ram' N Acres 1st and 2nd place yearling rams. No doubt he'll be back this time "gunning for more". Several other multi-breed competitors will also be on hand from the Land of 10,000 Lakes. JEFF REPASKY of Lonsdale will bring in highly competitive Southdowns. Another couple with Hamps and Polled Dorsets are GENE & MARCI SANFORD of Faribault, located about a half hour south of the Twin Cities on I-35. Marci is an Executive with the Dayton-Hudson Group (Target Stores). Another appealing couple is RANDY and GUNVAR DOMBEK of Ivanhoe; they have Hamps and Suffolks, the same as REX and JERRY QUAM of Dodge Center. These Louisville "regulars" may or may not have a few entries with them. Normally they won't field a complete show string in this setting. This pretty well covers the Minnesota Mob. I can't think of another state at this stage with a stronger representation in any breed.

When it comes to a long term competitor, no one can top RON PULLIN of Waterloo, Iowa. He has exhibited the Pullin Hampshires at every one of the Louisville Shows. He is a former AHSA Director and his father (Don) served as President. Ron's wife, MARY ESTER, has an extensive Hampshire pedigree in her own right; she was a Harper from Cromwell, Indiana, where her family had Har-Mar Farms, top Hampshires and Suffolks at mid-century. Her father, Harmon Harper, used to dominate the old Chicago Shows in his prime. Mary Ester will be on hand with Ron and their daughter, DEBBIE VAN AUKEN, who is their chief show jock! Ron is a rabid Iowa State Fan, where he graduated years ago. He says he always has two favorite teams during college Football season: ISU and whoever is playing the Iowa Hawkeyes! He had one highlight weekend earlier this fall when NDSU beat Iowa in Iowa City. Another Iowa Hamp regular is former AHSA President BILL DOHRMANN and his wife, SUE. Old "Banker Bill" also served as Mayor of Fayette for many years.

Other former AHSA Presidents who routinely attend the Louisville activities are BEN POWELL, Watertown, Tennessee, LELAND WHEATON, Charlotte, Michigan, and his wife, DENISE, and TOM and MONA HUBER, Watkinsville, Georgia. Tom is a University of Georgia Extension Veterinarian who received his degree at Purdue University where he also spent some time on their Basketball squad. Another former AHSA President with current basketball interests is CHARLES KIRLIN. He and his wife, NANCY, live just up I-65 a bit at Columbus, Indiana. Their grand-daughter has been the projected starting point guard at the top ranked Notre Dame women's basketball team. Another regular couple in Louisville with entries is JEFF and MARY HELD, Aurora, SD; Jeff served as AHSA President some 15 years ago. Dr. Held is also the Sheep Extension Specialist for SDSU. Two other recent AHSA Presidents who also routinely exhibit at Louisville are BRAD PAYNE and his wife, ANNA, from Agency, Missouri, and DAVID LYTLE of Lincoln University, Pennsylvania. These two guys served the two previous two-year terms ahead of TOM BOBENDRIER, who is presiding at present. All three of these chief officers routinely have show flocks on hand.

Not to be overlooked or disregarded is the role of Hampshire ladies on the Louisville scene. Foremost among them is JUDY MOORE, Eagle, Michigan. In a sense she may be a bit better known for her highly competitive Cheviots, but she is a strong Hamp breeder as well. Like the Pullins she has shown at every one of the Louisville National Shows. LISA CHARPILLOZ HANSON of Woodburn, Oregon is right on Judy Moore's tail! In fact, her daughter, KATIE HANSON, had the Supreme Champion Ram in last year's Junior Show. Away from her sheep Lisa is the Deputy Director of Agriculture for the State of Oregon. KAREY CLAGHORN, former AHSA Executive Secretary, held this same or very similar position for the State of Iowa before accepting her current executive position for the Iowa Soybean Association. Her former AHSA assistant CARRIE TAYLOR-KELLY who succeeded her as Executive Secretary, then later on also landed with the Iowa Soybean Association. These two gals are the principals in the Heartland group which has been formed to manage the Midwest Sale, but have also been tabbed to handle the North American International Sheep Show. Thus Carrie Taylor-Kelly is joined by Karey Claghorn in being named as the Sheep Show Superintendents, but this management team also includes CURT OVERCASH, MILLIE MOORE, and BRET OELKE. This crew has logged many sheep shows among them...they know what to do! Other high profile Hamp ladies include DEBBIE DEAL, Navaare, Ohio, and PHYLLIS DAVISON, Wichita, Kansas both are AHSA Board Members. Debbie's sister DENISE, is very much involved with their Hamps and will join them in Louisville.

Hampshire roots run deep and intertwine in the Louisville Show. Take for example the Illinois Fulton County Trio that was a force to deal with in the 1970s and 80s. This combination of cousins used to have their Heart of Illinois Hampshire Sale each May in Bloomington...and consisted of GREG DEAKIN, CURT OVERCASH and ROBERT LADD. These boys turned out some very competitive Hamps. Then they drifted apart to other activities. Deakin and Overcash combined to establish and publish the HAMPSHIRE BANNER, THE SUFFOLK BANNER and a Polled Dorset publication. Eventually, these two parted ways and Deakin ended up publishing the very popular BANNER magazine. Greg is also designated as the Official Photographer for the North American Sheep Show. Curt became a co-op manager for the Farm Bureau operations in Ottawa, Illinois. Robbie Ladd became a "Flower Child... a greenhouse operator and has been lost to any sheep activities.

Always it is interesting and inspiring people that gather each November that really "make" the event so very special. This year the National Hampshire Show will be at 8:00am on Tuesday, November 15. The Junior Show is set for Saturday, November 12. Try to be on hand to soak up the ambiance of the event created by the likes of THE LATE TOM DURHAM, Walnut, Illinois, HARRY and JEAN HART, Cozad, Nebraska, JIM CRETCHER, AHSA Executive Secretary, now living in Columbia, Missouri, another Missourian, JIM RILEY, also a past AHSA President, who is currently recovering from hip surgery in Colorado, under the watchful eye of his daughter. Two more past AHSA presidents that are likely to be on hand WARREN FINDER and ALEX MCCLURE, both of whom hail from Kansas. Warren operates the supplies division out of Mid-States Wool at Hutchinson, Kansas. Alex formerly, bought wool for the same firm and sometimes assisted with supplies division at shows. A couple more recent AHSA Presidents that will no doubt be on hand are STANLEY POE, II, Franklin, Indiana, and RICHARD KRACKOW, Arcadia, Wisconsin; he may well have some entries there shown by the SPILDE BROTHERS, DAN and KENT. These are the folks that set the tone for the Hampshire breed. Rub shoulders with them, hear their stories, soak up their advice, and observe the Hampshires on hand in the show ring and listen to the comments of the veterans at ringside; it will be a meaningful and instructive experience for you. Sure to make you want to return "next year", and the years to come.

Thank you!

The following breeders and businesses have supported the American Hampshire Junior Sheep Association in 2016.

HAMPSHIRE SUPPORTERS WHO DONATED TO THE ALL AMERICAN JUNIOR SHOW:

MUMM HAMPSHIRE
DC HAMS - DENNIS CARTER
BOBENDRIER HAMPSHIRE
THE HICKMANS - JIM & JOY HICKMAN
McCANDLISH HAMPSHIRE - MIKE &
ALISON RYAN

TED & JANSYN VAN HORN
ELECTRA FARM - EARL HELLER
HELD'S HAMPSHIRE
EBERT SHEEP FARM
BURNS-HALE LIVESTOCK - LOYAL &
DEBBIE BURNS

HAMPSHIRE SUPPORTERS WHO DONATED MONEY TO THE AMERICAN JUNIOR HAMPSHIRE SHEEP ASSOCIATION:

MUMM HAMPSHIRE
HELD'S HAMPSHIRE
BIG OAKS FARM - JAMES TRIVETT
McCANDLISH HAMPSHIRE - MIKE &
ALISON RYAN

EBERT SHEEP FARM
BOBENDRIER HAMPSHIRE
BURNS-HALE LIVESTOCK - LOYAL &
DEBBIE BURNS

HAMPSHIRE SUPPORTERS WHO DONATED TO THE AMERICAN JUNIOR HAMPSHIRE SHEEP ASSOCIATION SCHOLARSHIP FUND:

MUMM HAMPSHIRE
HELD'S HAMPSHIRE
McTAGGART HAMPSHIRE - BOB
McTAGGART
SAND HILL HAMPSHIRE - WAYNE &
DENISE BELDEN

THE HICKMAN'S - JIM & JOY HICKMAN
BOBENDRIER HAMPSHIRE
BURNS-HALE LIVESTOCK - LOYAL &
DEBBIE BURNS
McCANDLISH HAMPSHIRE - MIKE &
ALISON RYAN

Strawberry Fields

1522 Yearling Ram



Sr. Champion Ram and Reserve Grand Ram at 2016 Big E. 1st March Ram and Reserve Jr. Champ at 2015 NAILE. This L&L 28 son is the biggest we have raised We have some nice late lambs by him and more on the way. Half Interest in this ram will be available after NAILE.

1602 Feb Ram Lamb



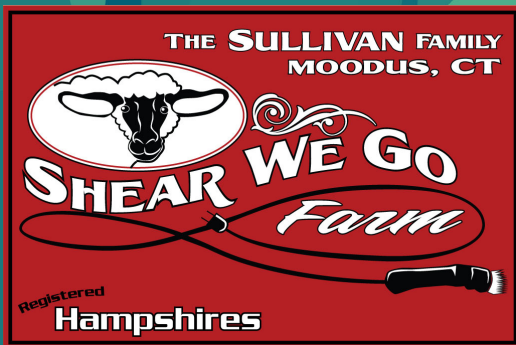
Champion Ram at the 2016 Big E. He is sired by Strawberry Fields 1313 who was first Feb Ram at 2013 NAILE. Dam is Hickman 0794. a ewe loaded with great genetics from Boomerang Hickman 680 and Underwood 99-32.

Thank you to Roger Sullivan and the Rasys ladies for all their help!

Sue and John Searle and Family
198 Weaver Hill Road
West Greenwich, RI 02817
sueasearle@yahoo.com

Kyle, Cara and Logan Thayer
PH: 401.374.4328
caralthayer@gmail.com

STRAWBERRY FIELDS

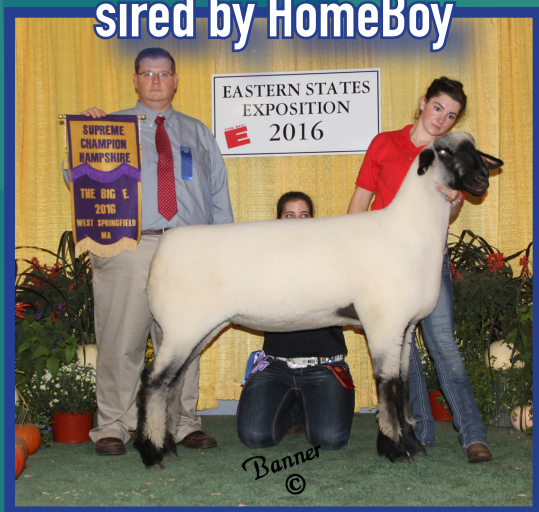


Shear We Go Farm

THANK YOU to all our friends and supporters!
SEE YOU ALL IN LOUISVILLE!

Celebrated A Big Day at Big E 2016

Quam 5-235 "E.T."
sired by HomeBoy



Supreme Hampshire
Grand Champion Ewe
Senior Champion Ewe
First Place Yearling Class II
Champion Ewe Junior Show

UNDEFEATED!
All American Junior
Sheep Show
Northeast Youth
Sheep Show
Big E
CLASS WINNERS
& First Pair
Yearling Ewes

Sullivan 1508 "PigPen"
sired by Strawberry Fields 1313



First Place Yearling Class I

WOW!!

- 1st Senior Ewe Lamb
- 1st January Ewe Lamb
- 2nd February Ewe Lamb
- 1st March Ewe Lamb
- 2nd Pair Ewe Lambs
- 1st Exhibitors Flock
- 2nd Breeders Flock
- 1st Get of Sire

Supreme Leadline Champion—Jenna & PigPen
Champion & Reserve Champion Ram—Junior Show
Champion & Reserve Champion Ewe—Junior Show

Sullivan 1616 "Louise"
sired by MRVH 0147



First Place March Ewe Lamb
Reserve Junior Champion Ewe

EXTRA SPECIAL THANKS going out to: Strawberry Fields—John & Sue Searle, Kyle, Cara & Logan Thayer, Abigail Christian, Tirzah Rasys, Dan Nemeč, John Eaton, Bryan Mason & Darlene Leary--- what an amazing crew!

SHEAR WE GO FARM - The Sullivans | Roger, Lara, Jenna, Griffin and Grant
74 Great Hillwood Road, Moodus, CT | 860.662.6070 | rogersredbarn@yahoo.com
www.facebook.com/shearwegofarm

We will have a very nice consignment for Sedalia in June. We are also planning our first online sale on May 31st 2017. We will have a good selection of yearlings along with some ewe lambs and ram lambs.

NELSON HAMPSHIRE



**Bobendrier 14-20
First place January ram
lamb at Louisville**



**Bobendrier 13-60 1st
place January ram**



**This yearling ewe is going
to Louisville along with a
few others**

**These rams
are in with 65
brood ewes
getting ready
for January
lambs**



**Our group of
top ewe lambs
for next year**



**Peterson fall ram lamb
purchased Sedalia 2016**

**Rodney & Kathy Nelson
13329 WCR 74 Eaton, CO 80615
Ph: 970.454.3775 Cell: 970.481.9837
nelsheep1@what-wire.com**



Call to the
127th Annual Meeting
of the American Hampshire Sheep Assn.



The 127th Annual Meeting of the American Hampshire Sheep Association is hereby called to meet Monday - November 14, 2016 - 6:30pm - at the North American Livestock Exposition in Louisville, Kentucky.

The Purpose of the Annual Meeting will be to elect Directors from Districts 3, 4, and 8 as well as one At-Large Director and to transact any other business which may come before the Association. Election of Officers (President, Vice President and Executive Committee) shall be made by the Board of Directors, following the Annual Meeting. These newly elected officers and the Executive Committee shall serve for one year, or until the next Annual Meeting.

A Ballot will be mailed to you for your convenience, should you be unable to attend in person, as set forth in Article XVI of the constitution. Exercise your rights and take advantage of the ballot to fulfill your responsibility as a member of the AHSA. Please follow the instructions on the ballot so your vote will be valid. Ballots must be postmarked by November 2nd.

Directors Whose Terms Expire:

District 3: Randy Pirtle (served 2 terms, eligible for re-election)

District 4: Brent Larson, SD (served 1 term, eligible for re-election)

District 8: David Lytle, PA (served three terms, ineligible for re-election)

At-large: Derick Miller, TX (served 1 term, eligible for re-election)

Only Senior/Active Members residing in the districts up for election may vote for a Director in their District.

All Senior/Active Members may vote for the At-Large Director. An active member is defined as a member of the AHSA who has paid dues in the last two years.

Minutes of the Annual Meeting will be mailed upon request only.

Annual Meeting with Horsd'oeuvres will be held on Monday - November 14, 2016 at 6:30pm - in a meeting room to be announced at the North American Complex.

North American International Livestock Exposition
Schedule of Hampshire Events:

Junior Breeding Sheep Showmanship -- Friday • November 11th • 10:00am

Junior Market Lamb Showmanship -- Friday • November 11th • 4:00pm

Lead Line Contest -- Friday • November 11th • 4:00pm

Junior Wether Show -- Saturday/Sunday • November 12-13th • 8:00am

Junior Breeding Sheep Show -- Saturday • November 12th • 8:00am

Stars of Louisville Hampshire Sale -- Saturday • November 12th • 6:00pm or following the junior show

Open Hampshire Show -- Tuesday • November 15th • 8:00am

Respectfully,

Jeff Ebert, Executive Secretary

Held

AURORA, SD 57002
 JEFF | MARY | AUSTIN | AARON
 CELL (JEFF): 605.690.7033
HELDHAMPSHIRE.COM | HELDHAMPS@GMAIL.COM

Hampshires

Held 16-1768

Undeclared January Ewe Lamb this summer for Tineigh Spoonster, MO. Congrats and good luck the remainder of the show season this fall. Sired by Held 14-1511.



2016 Res. Champion Ewe

Jr. Champion Ewe at the Wisconsin State Fair. This powerful January ewe lamb is sired by the 2015 National Champion Hampshire Ram, Held 14-1547.



2016 Champion Ram - IA and SD State Fairs

Held 15-1742 a triplet born fall ram by Held 14-1547, the 2015 National Champion Hampshire Ram. His famous full brother, Held 15-1741, also had a tremendous summer show season with Spoonster Hampshires, MO! Great work!!!



1st Place Flock 2016 SD and IA state fairs

Premier Exhibitor - SD and IA

Thank you to our family and friends for the terrific show assistance at SD and IA state fairs!!



2016 January and February Ewe Lambs

All sired by Held 14-1511

January Ewe Lambs 1st and 3rd at SD

February Ewe Lambs 1st and 2nd at IA and SD

1st pr of ewe lambs at SD, 2nd at IA



Triple Z Hampshires - MO

Wyatt and Blake showing a nice ewe lamb at the MO State Fair, she was purchased this spring off the farm along several other lambs they showed this summer.

Great job guys!!



Thank you to all our buyers and the visitors at the farm in 2016 and more importantly the kind words about the direction we have taken this flock. Check our website for additional show results on sheep we sold and offspring by Held stud rams in prominent Hampshire flocks this past year.

WE ARE AGRICULTURE!

By Kate Lambert

We are so blessed to be raising Hampshires – a breed that is as diverse as they come, with as many different styles and uses of our sheep as there are breeders of them. When I look at the many breeders of Hampshires – from those of us running a handful of ewes to those running several hundred – I wonder if we all realize the impact that we can and do have.

DO WE ALL REALIZE THAT WE ARE AGRICULTURE?

Some of us may consider this just a hobby, a 4H or FFA project. But to the outside world looking in – they see us –each of you – as farmers. And with that, comes a responsibility to the industry greater than Hampshire industry, or the breeding sheep industry. Even greater than the sheep industry – we have a responsibility to agriculture. We are agriculture! We are at a point in our country where only 2% of our population is involved in production agriculture – and that includes all of us raising sheep! That fact, combined with the fact that majority of the population was also not born on a farm, is leaving us with a growing divide between consumer and farmer.

SO HOW CAN WE BETTER REPRESENT OUR INDUSTRY?

In our marketing!

If we are engaged in direct to consumer marketing (which we all should be trying), it's important to represent your products in a fair and honest way. If you chose to market using labels, ensure that you understand what those labels mean (and what they do not mean) and make sure your buyers know that as well. If you do not understand production practices on larger farms please ask someone who does! Focus on the positives of your product without running down other products. Remember – that lamb that is sold in the stores is being raised by a family that is just as dedicated and knowledgeable about production as your family. Do not try to use fear or misinformation to get buyers to pay you a premium.

In our social media presence!

We need to be very aware of the fact that pictures and videos we post of our animals are being seen not only by our “sheep friends” but by our non-farming friends and family as well. Make sure you post pictures and share stories and videos in a way that leaves a positive impression for the general public. Always look at each post from the viewpoint of a consumer, not just from your viewpoint or the views of other sheep breeders.

In our physical presence!

Whether it's on the green shavings at Louisville or at your local county fair, when you are with your animals anywhere you have the unique opportunity of being the face of animal agriculture. For all of the people who visit those venues, they look to you as the expert. Additionally, that trip to the fair may be the only contact they get with agriculture.

So make their visit count. Take care of your animals, keep your area clean and presentable and engage with visitors in a friendly way when they ask questions. One of the top concerns of consumers regarding animal agriculture is, “Do farmers care about their animals?” So use any chance you get to show and tell that yes, you do in fact care deeply about your animals! Remember, even if you don't consider yourself a farmer by trade, the public considers you one! Take the role seriously and use your position to represent our industry for what it is - the industry responsible for the safest, most effective and affordable food supply in the WORLD!

SIMPSON livestock



2ND PLACE - CLASS 7

*San Antonio Stock Show
Shown by Brilee Payne*



CLASS WINNER

*2016 National Western Stock Show
Shown by Catherine Harper*



SUPREME CHAMP EWE

*2015 Midwest Elite Show & Sale
Sired by Royalty*



SUPREME CHAMP EWE

*2015 Black & White Show & Sale
Sired by Royalty*

JASON, MARINDA AND CADE SIMPSON
AULT, COLORADO ■ (970) 371-0276 ■ WWW.SIMPSONLIVESTOCK.COM

HERRIG HAMPSHIRE'S



Supreme Champion Ewe

2016 Midwest Stud Ram Sale

**Purchased jointly by Birschbach Hampshires
and Spilde Hampshire's**

David & Jake Herrig

677 State Hwy 267 - Slyaton, MN 56172

Jake Phone: 507-227-4228 - Dave Phone: 507-220-1360

jakeherrig@yahoo.com - www.herrigsheep.com

Featuring The Taylor Family

Introduce yourself and your family.

Jadewood Farms is located in Timblin, PA and is owned by Steve, Stacy and Callie Taylor. They own 110 acres in the rolling hills of Jefferson County. The farm runs about 300 ewes. In addition to Hampshires, they raise Border Leicesters, Shropshires, Katahdins and crossbred wether sheep. They also run 20 Belted Galloway cattle.

Give us a brief description of your Hampshire Flock

Our Hampshire flock includes 35 frame ewes as well as 20 purebred wether type ewes. On the frame side, most of the ewes trace back to the great "Hysteria" ram. "Hysteria" was one of the first predominate RR stud rams in the early 2000's. In addition, groups of females were purchased from Wilson Hampshires and Niemeier Hampshires to grow the foundation ewe flock.



Why did you choose to include registered Hampshires in your sheep operation?

Stacy began showing Hampshires as a 4-H project in the late 80's. After college, she and Steve decided to pursue the Hampshire breed further and began expanding. Stacy was drawn to the Hampshire breed because of their attractiveness and do ability.

What advice do you have for people starting out in the sheep business?

The most important advice we would give would be to raise what you like and what works for you. You are the one that goes to the barn every day, 365 days a year, so enjoy what you are doing!! Try to build a nucleus of similar bred females to work from and to be the foundation of your flock. Also, don't be afraid to ask questions and continue to learn. There is a multitude of knowledgeable breeders who will provide advice and support. As a fellow breeder once told us, Just when you think you know everything about sheep, they will show you something you have never seen before, and teach you something new."

What are one or two items that you have found to be critical for the success of your sheep operation?

Two of the most important things that have helped us succeed in the sheep business is to focus on raising structurally sound, correct sheep that are easy keeping. Not only do they reduce feed costs and man hours, but they provide your clients with a better chance to be successful whatever venue they may enter. More importantly, stand behind your livestock!! Sheep are living, breathing animals and things happen. If it is the fault of the sheep, be a responsible breeder and do what is needed to make the situation right. Happy, satisfied customers are more likely to return and purchase more seed stock.

Who are some people that you credit for your success with Hampshires?

The person who was the most instrumental in our success would be the late Buster Wilson of Rural Retreat, VA. Stacy was like a granddaughter to Buster and he is who fostered her love of the breed, providing numerous hours of education and encouragement Buster helped begin the Hampshire flock that is now known as Jadewood. After his passing, his son Doug approached Steve and Stacy with the idea of purchasing Buster's ewes. Doug believed that is what his dad would have wanted and thus the Wilson flock continued to live on after their move to Pennsylvania.

What is your favorite sports team?

College – Stacy - Penn State and University of North Carolina | Steve – Ohio State

What is your favorite food?

A big juicy sirloin or T-bone steak

What is the top item on your bucket list?

To visit and explore New Zealand and Australia

What is your favorite place you have visited?

The Rocky Mountains

CHAPIN HAMPS

Bill & Carole, Derek, Laura & Clive
Coal City, IL 60416
(815) 954-5129 chapinhamps@gmail.com

Sound, Honest, Consistent Hampshire Sheep

Size, Thickness, Bone & Beauty

“Easy Keepers” that will work in
any flock – especially YOURS!

Fall Ram Lamb

Sire: Koehler 1330 – Times Square

Dam: Bobendrier 12-92



Picturesque January Ewe #621

Sire: Chapin 104 – High Proof

Dam: Fleener 1301



See Our Sheep at the 2016 NAILE and
Offered the Illinois Bred Ewe Sale



Our Newest Addition

Clive William Chapin, June 2016

National Sale Champions



Champion Ram
Pine Lawn Farms, MN



Champion Ewe
Herrig Family
Hampshires, MN

Reserve Champion Ram
Slack Club Lambs, IN



Reserve Champion Ewe
Mumm Hampshires, IL

Champion Wether Sire
Allred/Elliott, OK



Champion Wether Dam
Allred/Elliott, OK



Reserve Champion Wether Sire
Allen Show Lambs, OK



Reserve Champion Wether Dam
Ellerbrock Club Lambs, IL



Auburn, Kentucky

CONTINUING THE FAMILY TRADITION OF VAN SICKLE HAMPSHIRE

ESTABLISHED 1983

Scott, Meg, Klay and Ellie VanSickle
270-792-7173 vansickleantiquityridge@gmail.com
Visit us at antiquityridgefarm.com

Visitors
always
welcome

KING DIAMOND RANCH

Thank you to all the buyers in the on line sales and from the farm!



Supreme Champion Ram
2016 California State Fair
Junior Show

“King Arthur” **King Diamond Ranch 59 TW RR**

Sired by our Fleener Ram, 2014 Junior Champion Ram in Sedalia, you can see that ‘Artie’ combines bone, muscle, type and size - just what we expect from his sire. We are excited to have collected him this August and will have semen available for sale.

King Diamond 75 RR

Champions that produce Champions! This fancy ewe lamb followed in her mother’s footsteps - King Diamond Ranch 22 “Daisy” was the Champion Hampshire Ewe at the 2015 California State Fair and 2015 Cow Palace Show. This ewe lamb’s sire is a son of our Fleener ram and a predictable ewe family. Watch for her - she has a bright future!

Champion Hampshire Ewe
2016 California State Fair
Junior Show



Congratulations Abilene Gatson - currently 3rd place Fitted Division AHSA Futurity and Isabella Kelley - Grand Champion Ewe at the 2016 Norco, So Cal and Indio Fairs.

KING DIAMOND RANCH

ARNOLD, DINA, COURTNEY AND AMANDA KING

EMAIL: DINAMKING@HOTMAIL.COM | PHONE: 707.322.3469

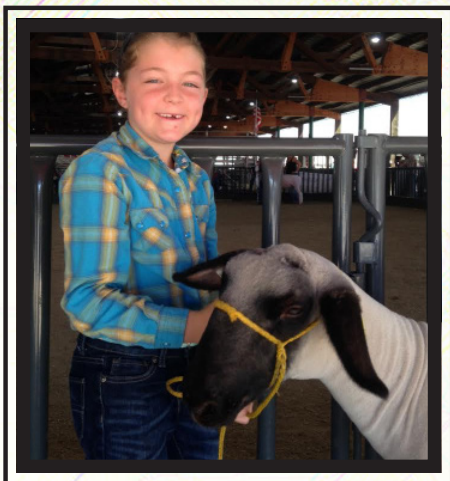
OUR 4-H LAMB PROJECT BY THE NUMBERS

BY JACKIE BOUNDS, VISALIA, CA

- 2 grandparents, who wanted to give their granddaughters an amazing opportunity to raise market lambs
 - 2 parents, who thought we could try this project
 - 2 girls, who learned about hard work, patience, practice, and raising livestock
 - 1 friend who introduced us to her family who welcomed the idea of town kids raising lambs in the country
 - 1 very kind land owner, who allowed us keep the lambs at his farm
 - 2 strong men, who built a pen for the lambs on several 100 degree days
 - 2 special lambs, born at the grandparents' farm in Michigan
 - 2,273 miles the lambs traveled from Fulton, MI to Sedalia, MO and then to Gustine, CA and finally Visalia, CA
 - 1 relative who said, "Can't you just buy lambs locally?"
 - 78 days we have owned the lambs and fed them morning and night, it will be a total of 82 when fair is finished
 - 0 days it rained during that time
 - 2 lamb feeders, 1 water bucket, 11 bags of show lamb feed, 7 bales of straw, 4 bottles of fly spray
 - 1 free large plastic tub, repurposed as our tack box
 - 1 free lamb stand from a retired 4-H family
 - 2 homemade lamb halters from Grandma, the 2 store bought halters already fell apart
 - 1 set of lamb clippers from Grandpa, enabling 2 girls to learn how to shear
 - 2 visits from the veterinarian
 - 4 medicines - Penicillin, Banamine and an anti-fungal shampoo and spray
 - 2 parents who gave the lambs shots
 - 1 bottle of Ivermectin® dewormer
 - 1 4-H leader, who answered all of our questions and texts, and taught us about showing
 - 1 assistant sheep leader, who came out and checked the lambs, and helped us prepare for fair
 - 10 lamb project workouts attended, including nutrition and showing clinics
 - 1 borrowed horse trailer to haul the lambs to the above practices
 - 3 friends who fed the lambs a few days so we could enjoy a little summer vacation
 - 3 times we asked for prayer for our lambs at church, 3 times our prayers were answered
 - 4 cute kittens who lived at the farm and let the girls love on them all summer
 - 1 patient dog, who watched us shower the lambs with attention while he dreamed of chasing the kittens
 - 42 friends and businesses we asked to support us with add-ons or to buy a lamb at the auction
 - 56 kids and 2 teachers who learned about agriculture when we took the lambs to school and shared with both girls' classes
 - 1 unforgettable family experience - time spent walking, sweating, talking, arguing, playing, praying and learning new things together
- And now we are headed to the Tulare County Fair. 6 days of fair, 5 classes to show in, 1 auction, and countless friends to be made. Notice I left off the monetary value of this experience; it was priceless, and carefully calculated in the 4-H Record Book.

###

Jackie Bounds is a first year 4-H mom in Tulare County, CA. As a former 4-H and FFA member, she loves sharing her passion for livestock with her family and friends. Jackie Bounds, Visalia, CA, former junior member of the American Hampshire Sheep Association and owner registered Hampshires. Her daughter recently showed a Hampshire at the Tulare county fair and submitted this article.



The Following Breeders and Juniors Nominated Ewe Lambs for the Futurity in 2016

RIKOW HAMPS - RICHARD KRACKOW
THE HICKMANS - JIM & JOY HICKMAN
DYLAN KLUG
HERRIG FAMILY HAMPSHIRE
HELD'S HAMPSHIRE
STANLEY POE & SONS
SHROYER SHOW STOCK - JOHN &
LORI SHROYER
JADEWOOD VALLEY HAMPS - STACY TAYLOR
METRO HAMPS - ALAN,
HEIDI & TY THORSON
WRIGHTS ROCK ACRES - DON &
ALICIA WRIGHT
BOBENDRIER HAMPSHIRE
DAVID & BARBARA LYTLE
PINE LAWN FARM - CASKEY FAMILY
BOBENDRIER BOYS - BRADY, MITCH,
SAM & NATE BOBENDRIER
LAKIN STAHEL
TY THORSON
DANIELS CLUB LAMBS - GARY DANIELS
JESSICA ALF
CHRISTIAN TIFFT
KIND DIAMOND RANCH - AMANDA KING
CARR HAMPSHIRE - MITCH CARR
PINCKNEY FARMS
MOENTER HAMPSHIRE - KENT MOENTER
PLAZA LIVESTOCK - BRAD PAYNE
MUMM HAMPSHIRE

GOLDEN LANE FARMS - GLEN HOFF FAMILY
JOHN & JUDY MOORE
FLEENER LIVESTOCK TIM & SARAH FLEENER
HOUGHTALING HAMPS
PROMISE KEPT FARM - TIM COSS FAMILY
COLIN DEAKIN
PETERSON SHEEP COMPANY
RB WILLWERTH & FAMILY
WAGGONER HAMPSHIRE
PARR HAMPSHIRE
LAND RUN HAMPS - AARON & RYAN
HUBBARD
NELSON HAMPS - RODNEY &
KATHY NELSON
DEZEEUW FARMS
KENDRICK HAMPS - DAN KENDRICK
BIRSCHBACH HAMPSHIRE
HIGHLAND HAMPSHIRE - GARY
KLUG FAMILY
JOHNSON FAMILY SHOW STOCK
WOLF CLUB LAMBS - DAVE WOLF
CREGO LIVESTOCK LARRY & DIANA CREGO
WHEATON HAMPSHIRE
ELLERBROCK CLUB LAMBS
ALLRED/ELLIOTT
OTT CLUB LAMBS - BRAD OTT
SLACK CLUB LAMBS - TOM SLACK
FLEENER CLUB LAMBS - KYLE &
JEN FLEENER

Special Thanks to these Breeders for their
Support of the 2016 Futurity.

Hampshires in 1984

We look back at 1984 in this issue for the Hampshire breed. The president of the AHSA in 1984 was Mike Caskey, MN and Clifford Throckmorton, TX was the vice president. Jim Cretcher, MO was the executive secretary. Other directors were: Chauncey Hubbard, Jr., OR, Glen Rask, CO, Earl Christensen, NE, Charles Kirlin, IN, Jim Riley, MO, Dr. Tom Huber, GA, Clyde Brubaker, PA, Dan Schlichter, OH and Sandra Snider, WY.

The AHSA registered 13,272 head of sheep in 1984. Prominent breeders registering a good number of sheep in 1984 included: Van Vleck Farm, Norman Olsen &

Sons, University of Illinois, Heggemeier Sheep Farm, Roger Green, Jim Miller, C. M. Hubbard & Son, LeRoy McCosh and North Dakota State University.

The 1984 National Hampshire Show was held at the North American International Livestock Expo. The Champion Ram was shown Schlichter Hampshires, OH. The Reserve Champion Ram by Heggemeier Sheep Farm, IL. The Champion Ewe was shown by P. L. Barnett, IA and the Reserve Champion Ewe was shown by Bedinger Hamps, IL. There were 56 rams and 108 ewes shown in the show. Heggemeier Sheep Farm had the first place flock and were the premier exhibitor.



In the National Junior Hampshire Show both the Champion Ram and Ewe were shown by Gary Niemeier, IL. The Reserve Champion Ram was shown by Rebecca Hope, MD and the Reserve Champion Ewe was shown by Laura Shroyer, OH.

In looking through the 1984 flockbook we will share a quote from then president Mike Caskey that still rings true today. "We have the type and kind of Hampshire now that will perform both in the show ring and in commercial flocks. So with optimism, enthusaiam and pulling together of everyone in the Hampshire business, we will move forward!!!!"

Mumm

Hampshires

*Thanks to all of our
buyers this year!*



Mumm 1565
“Final Opportunity”

Sire: Bob 12-154

“Rare Opportunity”

**He was Champion Ram IL
Jr Show, 1st Sr Ram at IL
and IN State Fair and 3rd
at IA State Fair**

**Watch for his lambs
coming in Spring 2017**

**Reserve Champion
Hampshire Ewe**

**2016 National Hampshire
Sale sold to Niemeier
Hampshires, IL**

**Watch for us at NAILE
and the Illini Bred
Ewe Sale!**



Jason, Megan, Beau, Luke & Emmalou Mumm

49 CR 1300 North - White Heath, IL 61884

Jason Cell: 217-377-2073 - Megan Cell: 217-377-2083 - Home: 217-687-2874

meganmumm@hotmail.com - www.mummhampshires.com

Featuring The Jim Miller Family

Introduce yourself and your family.

My name is Jim Miller and I live in Seagraves, Texas with my wife of 39 years April. We have 2 sons Dustin and Derick. Dustin and his wife Jessica have a 2 year old daughter Tinley, and Derick and his wife Ashley have two daughters Reagan who is 4 and Rylan who is 1. We grow pecans, cotton, alfalfa, peanuts, wheat and run 400 Hampshire sheep.

Give us a brief description of your Hampshire Flock

My Hampshire flock got its start in 1968 with the purchase of a few ewes from a prominent breeder named Clifford Throckmorton. In 1972 I purchased the entire George Ahlschwede flock, which consisted of 150 head. In 1977 and 1978 I went to Oregon and added 120 ewe lambs from Ronald Hogg. Since the beginning I have been trying to raise a wether type sheep with real Hampshire breed character that can compete at the highest level. Our first major win came in 1974 when a set of twin wethers won Grand at the San Antonio livestock show and Grand at the Houston livestock show. Over the next 42 years our lambs have been fortunate enough to stand in the same winners circle many times, the most special coming when my boys were the ones holding them. Through the years we added genetics from various breeders of the day including a ram named Ringmaster, who was national champion buck at NAILE in 1979, and a Klienert buck named Looking Up. More recently we bought a buck from Leonard Bianchi named Prime Time who propelled our heard to the next level.

Why did you choose to include registered Hampshires in your sheep operation?

I chose to raise Hampshires because my father already was raising dorsets suffolks and southdowns, so when I was 12 I thought hampshires would be the most logical choice to diversify and branch out on my own.

What advice do you have for people starting out in the sheep business?

I would say the biggest piece of advice I could give is to get your ewe base from one breeder all with similar genetics. This is the best way to raise consistant predictable livestock. There are a lot of multipliers in the industry there are only a few breeders, a person starting out needs to surround themselves with honest and ethical people, this will give them the foundation they need to grow into a breeder and not a multiplier.

What are one or two items that you have found to be critical for the success of your sheep operation?

The most vital thing to any livestock operation is a repeat customer.

Who are some people that you credit for your success with Hampshires?

There have been many people who influenced me over the years. The most influential have been my dad, Harlan Miller, who at the age of 90 still lives and works everyday on the family farm. Ronald Hogg, Dr George Ahlschwede, Clifford Throckmorton, and Darrel Klienert. All of these gentlemen were in a class of their own when it came to helping out the youth of the day.

What is your favorite sports team?

Texas Tech Red Raiders

What is your favorite food?

Steak and Potatoes

What is the top item on your bucket list?

Iguazu Falls, Argentina

What is your favorite place you have visited?

Alaska



Supreme Champion Ewe & Champion Hampshire Ewe
Indiana State Fair 4-H Show

Champion Open
Hampshire Ewe
Indiana State
Fair



Reserve Champion
Hampshire Ram
2016 Midest Stud
Ram Sale



**Slack Club
Lambs**

Tom Slack Family
1022 W 1300 N | North Manchester, IN 46962
www.slackclublambs.com | luvmysheep@aol.com
P: 260-982-8714 | Tom Cell: 260-750-7399

GRILLED BUTTERFLIED LEG OF LAMB WITH ROSEMARY SEA SALT & CHARRED LEMONS

Ingredients - 1/2 cup coarse sea salt | 1/4 cup fresh rosemary leaves | 2 1/2 to 3 pounds boneless leg of American Lamb, trimmed and butterflied by your butcher | Extra-virgin olive oil | 2 lemons

Directions

In a food processor, grind the salt and 1/4 cup rosemary leaves together until the mixture is the texture of coarse sand. The rosemary salt can be used immediately, or dried for later use. To dry, spread the salt mixture on a large plate and leave it out at room temperature, uncovered, until fully dried, about 1 day. Store in a sealed container; it will keep for several months. (This is great to have on hand to season any cut of lamb!)

Season the butterflied leg of lamb generously with the rosemary salt, working it into all the crevasses; it should take about 2 tablespoons. Set the lamb aside at room temperature for at least 30 minutes before grilling, or cover and refrigerate for up to 2 days.



Prepare a hot fire in a charcoal or gas grill. Pat the lamb dry, if needed, and rub it lightly with olive oil to coat. Grease the grill grates with oil, and place the lamb on the hottest part of the grill. Cook with the grill covered, turning once, until brown and crusty all over. Move the lamb to a cooler part of the grill, and continue cooking until an instant-read thermometer inserted into the center registers 130°F for medium-rare, 15 to 25 minutes total. (Carry-over cooking will increase the internal temperature off the grill.)

Prepare a hot fire in a charcoal or gas grill. Pat the lamb dry, if needed, and rub it lightly with olive oil to coat.

Grease the grill grates with oil, and place the lamb on the hottest part of the grill. Cook with the grill covered, turning once, until brown and crusty all over. Move the lamb to a cooler part of the grill, and continue cooking until an instant-read thermometer inserted into the center registers 130°F for medium-rare, 15 to 25 minutes total. (Carry-over cooking will increase the internal temperature off the grill.)

Transfer the lamb to a platter, cover with foil, and let it rest at least 10 minutes before cutting it into thick slices against the grain. Meanwhile, halve the lemons and brush the cut sides lightly with oil. Place them cut side down on the grill until deeply charred, 2 to 3 minutes.

Arrange the lamb slices on a large platter or directly over the salad. Serve with the charred lemon halves for squeezing, and more of the rosemary salt.



Introducing
AGENT
Carmichael



Bobendrier 16-09
2nd Place Jan. Ram Lamb at the
2015 National Sale

Look for the impact of this ram in our spring lamb crop!

Lytle's

Dave, Barb, Justin, Emily, and Alyssa
Lincoln University, Pennsylvania

PH:484-678-9291

dave.lytle@churchdwright.com



Lytle's
Hampshires

Hampshires

**BIG OHIO 2016
OVERALL
CHAMPION EWE
ON OUR FALL EWE
LAMB SOLD TO
MANY TIME
REPEAT
CUSTOMER
RABBIT CREEK
FOR \$2600**



**INTRODUCING
#9018 JAN 14TH
BORN RAM LAMB
WE ARE VERY
EXCITED ABOUT
THE POTENTIAL OF
THIS HUGE STUD
PROSPECT**

Peterson Sheep Co.

Doug & Lindi - 803-23rd Street N.E. - Lemmon, SD 57638 - (701) 376-3115 - peter@sdplains.com

CHECK OUT OUR WEBSITE! WWW.PETERSONSHEEPCO.COM



We had a Banner Day at the Missouri State Fair!



SPOONSTER 15-04 "HANNAH"
SIRE: HOMEBOY • DAM: BONNIE
 1st Yearling Ewe and Champion Ewe
 2016 MO State Fair

"Hannah" is the ET result of mating two national champions, and boy did it work! She has all the pieces to be the next elite donor in our program. She'll lamb to Church Bells in 2017.



HELD 15-1741 "CHURCH BELLS"
SIRE: HELD 14-1547
 1st Fall Ram Lamb and Res. Champion Ram
 2016 MO State Fair

"Church Bells" is the triplet brother to Held 15-1742, the Champion Ram at the 2016 Iowa State Fair. We've mated this ram to some of our very best ewes...we can't wait for 2017!



HELD 16-1768 "MORGAN"
SIRE: HELD 14-1511
 Champion Ewe • 2016 MO State Fair 4-H Show
 1st Early Ewe Lamb • 2016 MO State Fair

"Morgan" is currently #1 in the AHSA fitted ewe futurity for our daughter Tinleigh. Thanks to Jeff & Mary Held for allowing Tinleigh to purchase this outstanding female, they make a great pair!

WATCH FOR THESE SHEEP AND THE REST OF OUR SHOW FLOCK IN LOUISVILLE AND BE SURE TO WATCH FOR UPDATES ON OUR FACEBOOK PAGE, SPOONSTER HAMPS.



Spoonster Hamps / The Spoonster Family / Eolia, MO / PH: 636.359.5487

WWW.SPOONSTERHAMPSHIRE.COM

OUR GEARS ARE ALWAYS... TURNING!



BAA BAA ACRES 229 **"SWEET BABY RAE"**

Sire: Held 15-1647

MGS: Plaza Hamps 1065 "Bailout"
1st March Ewe Lamb and Res. Jr.
Champion Ewe
2016 Wisconsin State Fair

BAA BAA ACRES 219 RR

Sire: Held 15-1647

MGS: Cahoon 134
2nd January Ram Lamb
2016 Wisconsin State Fair

Be sure to watch for
219 and "Sweet Baby Rae"
in Louisville!



HE'S FOR SALE!



BAA BAA ACRES 226 RR

Sire: Held 15-1647

MGS: Baa Baa Acres 116 "Strategy"
1st Feb. Ram Lamb and
Res. Jr. Champion Ram
2016 Wisconsin State Fair

Held 1647 and "Strategy" in one
pedigree! If your gears are turning,
consider adding this prospect to
your stud ram line-up!

In the spring of 2015 our "gears were turning" as we set out to find our next stud ram. That search ended when we found **Held 15-1647**. As we studied 1647, as a 50-day old ram lamb, we knew he checked all the boxes on our priority list...**outstanding phenotype, structural integrity, loads of breed type and a proven pedigree.** 1647 is a full brother to Held 1511, a lead sire for Held Hampshires. He has surpassed all our expectations. As we move towards 2017, a large percentage of our lambs will be sired by 1647 and by Baa Baa Acres 219, a standout son of 1647. We invite you to Juneau, WI, to come see for yourself!

CONGRATS!

James Valley Stock Farm - ND,
Champion Ram at the 2016 ND State
Fair with Baa Baa Acres 199 "Legacy" a
maternal brother to "Sweet Baby Rae!"

Uptown Farms - MO, on your
continued success and outstanding
lamb crop sired by Baa Baa Acres 196
"Party On."

Thanks to **Gordy and Toni
Keranen - MN** for their purchase of
Baa Baa Acres 211.

BAA BAA ACRES

ROD AND TERRY ANDERSON • JUNEAU, WI
PH: 920.386.2540 • andersons1978@att.net

SKIP ANDERSON • FARGO, ND
skip_anderson@hotmail.com • PH: 701.205.9764

Hampshire Youth

Animal Welfare

Understanding the behaviors of animals helps prevent injuries to both people and animals”
– Dr Temple Grandin

Livestock can sometimes be difficult to move and handle. 4-H's motto of 'learn to do by doing' brings handling livestock to a whole new level and can be a learning experience even for those that grew up on a farm and worked with animals before. Aggressive, stubborn, frightened or stressed animals can all add their own unique challenges. Remembering to keep the animal's well-being can make your sheep project more enjoyable for both you and your sheep.

ANIMAL CARE AND WELL-BEING FREQUENTLY ASKED QUESTIONS: GENERAL ANIMAL WELL-BEING

Q. What is animal well-being?

A. Animal well-being, or animal welfare, refers to an animal's condition or the treatment it receives. When a person protects an animal's well-being, he or she makes sure to meet both its physical and mental needs. Animal care, animal husbandry and humane treatment are other terms used when people discuss the condition and treatment of animals.

Q. Why is protecting an animal's well-being important?

A. It's the right thing to do. Animals that have good welfare are healthier. It also makes good business sense because farmers who take good care of their animals produce a better quality product.

Q. Can animals be happy or sad?

A. Animals have the basic emotions of seeking, rage, fear, panic, lust, care and play. Animals react when their needs are met or not met. When they react, they can seem happy or sad to us. For example, when an animal's play emotion is met, it looks happy to us.

Q. How do you know if an animal is comfortable?

A. Animal caretakers can tell based on what they know about how that species normally acts. Caretakers must meet not only the animal's physical needs but its mental needs as well. For example as with most animals, cats want a soft, comfortable space to rest to meet their physical

needs. That spot must also meet their mental needs. It should be a raised surface so the cat can have a higher point to watch its surroundings or be partially covered to allow for a hiding space. When animals begin to behave in a way that is not normal for their species, animal caretakers make changes to the animals' surroundings so that their behavior becomes normal.

Q. Do all animal need the same things?

A. Yes and no. All animals require Brambell's Five Freedoms: 1) freedom from hunger and thirst; 2) freedom from discomfort; 3) freedom from pain, injury or disease; 4) freedom to express natural behaviors and 5) freedom from fear and distress. The way those freedoms are met for each species can differ. For example, although ducks and chickens are both poultry, ducks need a pool of water to express their natural behavior, but chickens don't.

Q. How do you decide what is good animal well-being?

A. A person can assess the animal's situation by using Brambell's Five Freedoms to ask the following questions: 1) Does the animal have food and water? 2) Is the animal free from discomfort? 3) Is the animal free from pain, injury or disease? 4) Is the animal free to express its natural behavior? and 5) Is the animal free from fear and distress? Animal well-being is a continuum, meaning it can range from very good to very poor and be anywhere along the imaginary line.

Connection

EDUCATING THE PUBLIC ABOUT ANIMAL AGRICULTURE: SHARING YOUR STORY

Less than 2 percent of the United States population lives or works on a modern farm. This creates a great disconnect between consumers, farmers and farming operations. Animal events open to the public are opportunities to educate those not involved in agriculture about how animals are actually raised and cared for. Visitors may have many questions ranging from the very simple topics to the more challenging issues of agriculture. Either way, this presents the perfect opportunity to help educate the public about animal agriculture and, specifically, about animals and project experiences. Most visitors who ask questions are seeking information because they want to learn and understand what exhibitors are doing and why. Exhibitors provide the best care for their animals and promote their well-being; they should be proud to share that information!

1. Create signs, dioramas and exhibits with species specific information and fun facts. Place them in areas where the public can easily find them to learn more about animal care, well-being and the project. Have printed information available for visitors to take home. Present questions for the public to think about and let them know to whom to talk for – or where to find – the answers.

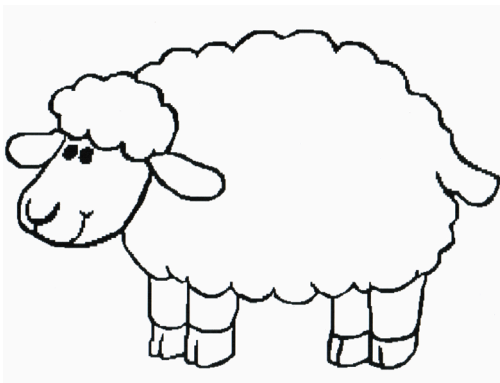
2. Develop a fun, positive slogan that is a memorable message for the public about animal agriculture. One could be developed from the educational theme, for the entire event or for each species in the event.

3. Be present, excited and open to talk with people at an “Ask Me!” table. Set up in an area that is easy for the public to find.

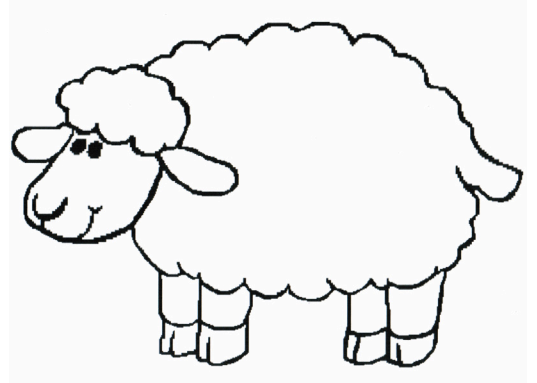
4. Have a contest with other clubs to design a T-shirt for the event. Pick a theme and use words and images to tell your agricultural story. Designate days for different clubs to wear the shirts so each group can be the “expert” for a day in answering questions from the public.

5. Engage with visitors and be enthusiastic about your project! Share your stories and talk about why animal agriculture is so important. Listen to questions and the public’s views. By knowing what others think about a subject, you can see different sides, learn something new and know better how to talk with people who are unfamiliar with agriculture.

For additional information or resources on agricultural literacy, go to http://www.breakfastonthefarm.com/agriculture_literacy_resources.



Color Me!



ALL AMERICAN JUNIOR SHOW CHAMPIONS



Champion Ewe
Jenna Sullivan, CT



Reserve Champion Ewe
Jordyn Leininger, IN

Champion Ram
Jenna Sullivan, CT



Reserve Champion Ram
Olivia Nichols, KY

Reserve Champion
Market Lamb
Abigail Wilson, NC



Champion Market Lamb
Jordyn Leininger, IN



Junior Spotlight

AMANDA KING

Amanda King is 15, from Petaluma, CA and the daughter of Dina Tesconi-King and Arnold King. She is currently a Sophomore at Petaluma High School. She partakes in advanced classes and different clubs, including Petaluma FFA where she is the Chapter Reporter and has a Gardening SAE. She has been an active member of the Liberty 4-H Club for 9 years and is currently holding office of Club Treasurer. Her projects were in Rabbits and cooking in her mini member years, now her projects are Sheep, Swine, Dairy, Cooking, Woodworking and Livestock Judging.

King currently has 28 Hampshires in her flock including: 3 stud rams, 2 ram lambs that are being showed, seven spring ewe lambs, fourteen brood ewes and two baby lambs. She loves the Hampshire breed of sheep because they are very mellow and loveable, tall and fitting them is definitely a fun challenge!

Her favorite show that she has attended is the California State Fair because the best of the best is there from all over California in terms of showmanship skills and the quality of animals. It's also her favorite show because she can interact with people from all over the state and has made many lasting friendships.

She has many memories with my sheep, some of them include going to shows with the whole Tesconi family and attempting to "show" sheep since the time she could walk, waking up in the morning and seeing the sheep waiting for their feed, and seeing the baby lambs running and jumping in the pasture. One of her fondest memories with her sheep occurred this year at the 2016 California State Fair where she was awarded the Supreme Champion Ram with Registered Hampshire "Artie." To win Supreme Champion at the State Fair has been a goal of hers since the first time she showed there in 2010. She says, "It is a great honor and I was proud to have my Hampshires in the spotlight."

She plans to continue breeding and making her flock increase in quality but not quantity. She has a small wether dam project, where she has 6 ewes that she breeds to produce her market lambs to show at the Sonoma County Fair. After she selects her own lambs she sells the rest to local 4-Hers and FFAers. The selection skills she learned with her Hampshires have helped her to become a better judge when picking out replacement ewes, show sheep or selecting a new stud ram.

With this, her advice to junior Hampshire members is to get involved in our breed because they are easy to handle, have good dispositions for the show ring and are popular as fitted frame sheep or slick shorn wether dams. "My Hampshires have challenged me and rewarded me." Hamps are Champs!



Photos By Tracy



GRANT FUNDS AVAILABLE

The Let's Grow Committee is announcing the availability of its fourth-round of funding for Let's Grow grants. Grant proposals are due on or before Nov. 15.

Up to \$325,000 is available in this round of funding for projects to support, promote and ensure the U.S. sheep industry's future through the development of innovative and sustainable initiatives that increase the productivity, profitability and growth of the American sheep industry. Producers are encouraged to submit proposals that meet the guidelines of the committee as it intends to increase sheep industry production efficiency and profitability in an attempt to compete with not only important lamb and wool products but with other domestic livestock production, as well.

"We are excited to offer this next round of grants," said ASI Let's Grow Committee Chair Susan Shultz (Ohio). "The committee has been fortunate to see many inventive ideas for sustaining and improving the industry and we look forward to the opportunity to review the next round of grants."

Visit Sheepusa.org/Growourflock_Funding_Application for the application. For more information contact Let's Grow Coordinator Alan Culham at alan@sheepusa.org or 517-896-7378.

The American Hampshire Sheep Association has begun adding sponsorship to shows where the show officials have taken the time to fill out an application seeking support for the Champion and Reserve Champion Hampshire Ewes at their junior shows. Recently, five individuals were awarded \$100 each for their winning Hampshire Ewes.



**Champion Hampshire Ewe at the Oregon State Fair
Gabby Fallesen Junior
Hampshire Show,
shown by Katie Hanson**



**Champion Hampshire Ewe at the Marcus Thompson Junior
Hampshire Show,
shown by Jenna Sullivan, CT**



**Champion Hampshire Ewe at the
Ohio State Fair Junior Show,
shown by Marissa Mattix.**



**Reserve Champion Hampshire
Ewe at the Oregon State Fair
Gabby Fallesen Junior
Hampshire Show,
shown by LR Burns**



**Reserve Champion
Hampshire Ewe at the
Marcus Thompson Junior
Hampshire Show shown,
by Jenna Sullivan, CT**



**Reserve Champion Hampshire
Ewe at the Ohio State
Fair Junior Show,
shown by Sidney McAllister.**

Highland Hampshires

1st
Place



Klug HH 16-190T
Sire: Klug HH 12-113P 'Bond'
Dam: Klug HH 10-125T
1st Slick Ewe lamb IA State Fair
1st Slick Ewe lamb MN State Fair



Rikow 3064 - 2016 Futurity Jan Ewe
Sire: J & E Hamps 2-22 'Homeboy'
Dam: Rikow 2062
2nd NE State Fair
3rd MN State Fair



Klug DK 16-7 Feb Ewe Lamb
Sire: Bowman
Dam: MB Genetics
4th All-American Jr. Show, 4th WI State Fair,
1st IA State Fair, 2nd NE State Fair, 3rd MN
State Fair



Klug HH 15-172T 'Que'
Sire: Klug HH 13-120P 'DU'
Dam: Mercedes Ladies 13-03 'M'
Champion ewe Nebraska State Fair
1st yearling ewe MN Hampshire Show
2nd Yearling WI State Fair



2016 Wisconsin State Fair Sheep Barn
Hall of Fame Inductee

Congrats Gary!

Gary T. Klug
939 Hazel Rd. Harlan, IA 51537
(712)202-4461
klughihamp@tm.net

Dylan R. Klug
1033 1st Ave. Grafton, WI 53024
dklug2001@gmail.com

Lynn K. Lee, Belgium, WI
As Flock



Emis-

Stars of Louisville Hamshire Sale

Held in conjunction with the
North American Livestock
Exposition

Stars of Louisville Hampshire Sale

Saturday, November 12th Louisville, Kentucky

Sale Day Phone: 785-458-9174

Managed By: American Hampshire Sheep Association

PO Box 231, 305 Lincoln St. Wamego, KS 66547, 785-456-8500

Jeff Ebert, Executive Secretary

Auctioneer: Scott Van Sickle, 270-792-7173

Judge: Evan Snyder

General Information

Time and Location: The sale will be held in conjunction with the North American Livestock Exposition in Louisville, Kentucky. The sale will be held in the exposition center starting at 6:00pm on Saturday, November 12, 2016.

Terms and Conditions

Terms: Cash. Institutions may pay by requisition. The auctioneer will settle any dispute as to the bid. All animals are at purchasers risk as soon as sold. Canadian buyers must pay in U.S. funds. All sheep must be paid for the day of the sale and mail bids secured with MasterCard or Visa.

Registration and Health: All sheep are registered and will be accompanied by proper health certificates. All sheep will be transferred to their new owner at the consignor's expense.

Bred Ewes: The seller must specify if the ewes are open or bred, and if bred, a breeding certificate must be turned in the registration paper and health at check in time.

Substitute Entries: Substitute entries are permitted and they will be designated with a line or bar under the number on the back of the sheep. The exhibitor has this pedigree information at his pens, and if possible, it will be read from the auction block.

Mail Bids: If you are unable to attend the sale, you may contact one of the following representatives of your choice to handle your mail bids. These include: Jeff Ebert, 785-458-9174 or Dave Lytle 484-678-9291

Sale Release: Sheep sold in the National Hampshire Sale will be eligible for immediate release following the sale.

Notice: Neither the sale management nor the consignors to the sale assume any risk or liability in case of any accidents of any kind or losses of any kind to any person or persons in attendance at the sale.

Sale Guarantee

Except for those stated in the below guarantee, there are no warranties, either expressed or implied, as to merchantability or fitness for a particular purpose with respect to the sheep being sold in this sale. The warranties and guarantees set forth in the below guarantee are in lieu of all other warranties, either expressed or implied, and the remedies provided therein shall be the sole and exclusive remedy of the buyer, or any party claiming through the buyer, for any breach of warranty or guarantee therein provided, and all other obligations or liabilities.

1 - Every ewe sold will be guaranteed as a breeder if properly handled. It shall be the responsibility of the buyer to return a non-breeder to the seller in acceptable breeding condition. The seller, after a fair trial and the animal is found to be a non-breeder, shall have the privilege of replacing the ewe with one of equal value to the satisfaction of the buyer or refunding the purchase price. This guarantee shall not apply to any sheep that are shown subsequent to the date of sale.

2 - Ewes sold as bred ewes that are not, in fact, bred, shall be adjusted by one of the three following seller's options: a. replace the original ewe with another bred ewe, or with a ewe with lambs at side to the satisfaction of the buyer, or B. the buyer to keep the original ewe with the seller to provide a compensatory lamb or lambs to the satisfaction of the buyer, or, C. the seller to refund a compensatory 20 percent of the original purchase price due to the lack of lamb crop.

3 - This guarantee shall constitute a contract between the buyer and the seller only, and no other parties assume any liability, legal or otherwise, expressed or implied.

Stars of Louisville Hampshire Sale Catalog

Consigned by:

Kirschten Sheep Farm

5000 Jefferson Ave
Alton, IA 51003
(712) 395-0377

kirschten59@gmail.com

Lot 1-Slick-Shorn January Ewe Lamb

Kirschten 16050

DOB: 1/16/16 TW QR

Sire: Kleinert 4771 599372

Dam: Kirschten 859 35553D

This female was set aside early to bring to this sale. She will work in any program. The Kleinert ram has knocked out an amazing set of ewe lambs and this one is a stand out.



Consigned by:

Metro Hamps/Rupnow Hamps

Alan, Heidi and Ty Thorson

Jim and Sue Rupnow

W460 Sydo Rd
Columbus, WI 53925
(920) 344-1235

metrohamps@hotmail.com

www.wisconsinshowlambs.com

Lot 2- Slick-Shorn January Ewe Lamb

Metro 1609 61558D

DOB: 1/27/16 S QR

Sire: OTT 3822 TR 596582

Dam: Metro 409 49197D

This January ewe lamb presents great breed character and offers a tremendous look on the profile. Out of a young "Raji" daughter and sired by our Ott buck, this genetic combo is the

same mating we are building our next generation on and the same cross as Ty's Champion Slick Shorn Hamp Ram at the 2015 Junior Hamp Show at the NAILE. Long Necked, super fronted, level topped with the correct rear leg set that you also appreciate when you set her in motion.



Consigned by:

Tim & Sarah Fleener

273 S Mountain Road
Robesonia PA, 19551
(717) 304-9116

fleenerlivestock@gmail.com

Lot 3- Slick-Shorn January Ewe Lamb
Fleener 1617

DOB: 1/29/16 TW

Sire: Barton 9136 590190

Dam: Fleener 1439 51849D



Consigned by:

Richard Krakow

316 W. River Street
Arcadia, WI 54612
(608) 343-2899

rkdrealt@triwest.net

Lot 4- Fitted February Ewe Lamb

Rikow 6047

DOB: 2/5/16 TW RR

Sire: Homemade

Dam: Acid Rain

This ewe twin was on of the higher selling lambs in our online sale. Homemade is a maternal son of Home boy. Acid Rain is on of the bigger ewes of the flock. This lamb will get big. She is a very clean fronted lamb.

Consigned by:

Bobendrier Hampshires

1607 90th Avenue
Pipestone, MN 56164
(507) 825-4072

bobendrierhampshires@gmail.com

Lot 5- Fitted January Ewe Lamb

Bobendrier 16-06 61605D

Born: 1/2/16 TW RR NNP

Sire: 595707 Bobendrier "Rare Feller"

Dam: Bobendrier 12-59

Out of the heart of our 2016 show flock. In her only two show appearances she stood second in class to the reserve champion at Wisconsin and won her class at Iowa where there were Hampshires from eight state competing. A solid female that should make a major league show ewe next year! Sells guaranteed OPEN.



Join us for the 2016 Stars of Louisville Hampshire Sale!

Consigned by:

Bobendrier Boys

1351 Highway 75
Pipestone, MN 56164
(507) 215-0334
shebob@svtv.com

Lot 6- Fitted Yearling Ewe

Bobendrier Boys 15-46 58379D

DOB: 3/26/15 TR RR

Sire: Bobendrier 13-77 "Rare Edition"
597067

Dam: Bobendrier Boys 13-28 45630D

Bred To: Bobendrier 16-60 "Rare Rebel"
599125

Here's an opportunity at a ewe from the heart of our breeding program. This will be the only "Rare Edition" daughter we will sell. She's a big-time ewe bred to a big-time ram. She marked to "Rare Rebel" for a mid-January lambing. Size, style, and balance with this one!



Consigned by:

Kleinert Hampshires

Mike Kleinert

2873 N 1600 E
Clifton, IL 60927
(815) 383-0962

mike@kleinerthampshires.com

Lot 7-Slick-Shorn February Ewe Lamb

Information Sale Day

Consigned by:

Syndicate Show Lambs

Holly Swearingen
24921 Loring Road
Lawrence, KS 66044
(785) 218-9137

rocky.silversummit@gmail.com

Lot 8- Slick-Shorn March Ewe Lamb

We have not picked one as of yet, but will be sired by the High Hill ram we showed at Louisville last year. Deep set to chose from and with no doubt will be of the same quality we have brought the last two years that have been the champions in the slick-sheared side.

Consigned by:

Strawberry Fields

Sue & John Searle

Kyle, Cara & Logan Thayer

98 Weaver Hill Road
West Greenwich, RI 02817
(401) 374-4328

caralthayer@gmail.com

Lot 9- Fitted February Ewe Lamb

Strawberry Fields 1603 62101D

DOB: 2/15/16 TW RR

Sire: Strawberry Fields 1313 595834

Dam: Strawberry Fields 0913 33249D

Consigned by:

Morgan & Maddie Hauger

7287 W. 50 N.

Connersville, IN 47331

Home: (765) 679-1376

Cell: (765) 561-1856

lmhauger@hotmail.com

Lot 10- Slick-Shorn March Ewe Lamb

Hauger 0246

DOB: 3/7/16 TW

Sire: Poe Blue 25 601572

Dam: Shroyer 1362 49226D

Lot 11- Slick-Shorn March Ewe Lamb

Hauger 0194

DOB: 3/2/16 TW

Sire: Poe Blue 25 601572

Dam: Poe 4658-14 51773D

Consigned by:

Jenna Sullivan

74 Great Hillwood Rd.

Moodus, CT 06469

(860) 662-6070

rsullivan@sullivanpaving.com

Lot 12- Fitted February Ewe Lamb

Sullivan 1611 62850D

DOB: 2/9/16 TR

Sire: MRVH 0147 593938

Dam: Strawberry Fields 1202 39529D

Great addition to any flock. Placed 6th in the open class division at the Big E. Exceptional length and neck extension.

Consigned by:

Fleener Club Lambs

Kyle & Jen Fleener

807 Beecherstown Road

Biglerville, PA 17307

(717) 304-9116

fleenerkm@yahoo.com

Lot 13- Slick-Shorn March Ewe Lamb

FCL 1622 62431D

DOB: 3/17/16

Sire: Barton 2090 "Rocket"

Dam: Fleener 1320

North American International Livestock Exposition Schedule of Hampshire Events:

Junior Breeding Sheep Showmanship -- Friday • November 11th • 10:00am

Junior Market Lamb Showmanship -- Friday • November 11th • 4:00pm

Lead Line Contest -- Friday • November 11th • 4:00pm

Junior Wether Show -- Saturday/Sunday • November 12-13th • 8:00am

Junior Breeding Sheep Show -- Saturday • November 12th • 8:00am

Stars of Louisville Hampshire Sale -- Saturday • November 12th • 6:00pm or following the junior show

Open Hampshire Show -- Tuesday • November 15th • 8:00am

EBERT SHEEP FARM

Thanks to all of our buyers! We sold 31 rams in 2016 into 10 different states.

Can we add your flock to our list of satisfied customers in 2017?

A big thanks to Shroyer Show Stock for leasing us King Tut for the 2017 lamb crop. We will breed him to all of our 35 Hampshire ewes. Watch for his lambs in our 2017 online sales: April 10th & June 12th hosted by wlivestock.com



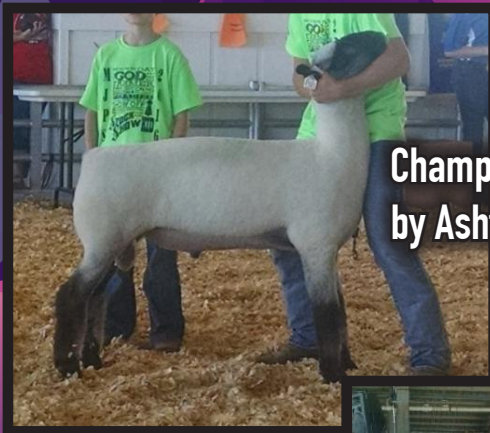
"King Tut"

WAGGONER HAMPSHIRE

Roy & Judy Waggoner
18217 Hink School Ave. Cole Camp, MO 65325
w.hampsnol@gmail.com + Home: 660-974-2118
Cell: 660-221-3388 or 660-221-3456

Jeff, Kerri, Christine & Monica Ebert
10015 Flush Road - St. George, KS 66535
(785) 458-9174 - ebertsheepfarm@gmail.com
www.ebertsheepfarm.com

The American Hampshire Sheep Association proudly sponsored the Hampshire portion of the Midwest Junior Preview Show with a \$1000 donation. Congratulations to all of the Hampshire exhibitors on a great set of sheep.



Champion Ram shown by Ashton Daniels, MO



Champion Ewe shown by Beau Mumm, IL



Reserve Champion Ram shown by Madison Hauger, IN



Reserve Champion Ewe shown by Charleigh Spoonster, MO

GENETICS THAT WORK!

We are pleased to see customer success this summer with our genetics. Here are some examples:

Bobendrier Hamps 16-19 First January ewe lamb at Sedalia as well as high selling ewe lamb at \$1900. Bobendrier Hampshires, Pipestone, MN also had several other high placing and selling lambs sired by Koehler 1330 RR Times Square.



Elaine Dorn, Cannon Falls, MN showed the Res. Ch. Hampshire Yearling Ewe in the 4-H division at the Minnesota State Fair on a Times Square daughter purchased from us.

Pine Lawn Farms, Pipestone, MN have also had success with offspring of ewes purchased from us including the first (and Reserve Champion) and second place February Ram Lambs and first place Slick Shorn Ram Lamb at the 2016 Minnesota State Fair. All were dammed by Breakthrough daughters.



Golden Lane Farm, Hawley, MN showed this ewe to Grand Champion at the North Dakota State Fair and also 1st place fall ewe at the Minnesota State Fair. She is dammed by Frame 3612, a daughter of Koehler 1046 RR Paradigm purchased from us.



Koehler 1303 RR Monumental Shown here as a recently shorn 3 year old ram. He was 1st Fitted February Ram Lamb and Grand Champion Ram, 2013 Minnesota Hampshire Sheep Association State Show. A son of Buford, he is a high capacity heavy boned ram with great breed type and performance. At 117 days he weighed 170 pounds and his twin brother weighed 166 pounds. Being used for 2017 lambs.

Koehler 1330 RR Times Square (Breakthrough x Bison x Wheaton 4-086)
A home raised stud. Most of our 2016 born rams and ewes that we are growing out are sired by him. The majority of rams in his pedigree are also home raised including Breakthrough, Red Baron, Bison, Frame 6066, and Signature. His maternal side traces back through 12 generations of home raised Koehler and Frame ewes.



Koehler 1519 RR A March yearling and full brother to Times Square (Breakthrough x Bison). Shown here shortly after shearing this spring, he and his twin brother (Koehler 1520 RR) are very level correct rams that measure 39" in green condition. He will sire many of our 2017 lambs.



Koehler 1520 RR Full brother to Times Square and twin to Koehler 1519 RR shown above. Also being used for 2017 lambs.

2016 LAMBS SIRED BY:

Koehler 1330 RR Times Square
(Breakthrough x Bison x Wheaton 4-086)

Frame 4151 RR
(Times Square x Frame 6066 RR (sire of the 2009 NAILE Ch. Ewe))

Koehler 1256 RR Equinox
(Buford x Wheaton 4-086)

2017 SERVICE SIRE:

Koehler 1519 RR
(Breakthrough x Bison x Wheaton 4-086)

Koehler 1520 RR
(Breakthrough x Bison x Wheaton 4-086)

Koehler 1518 RR
(Breakthrough x Finder x Shockwave)

Koehler 1303 RR Monumental
(Buford x Frame 7059)

Koehler 1552 RR
(NOC 4042 RR (Champion Slick Sheared Ram at 2014 NAILE) x Buford)

EWES FLOCK BY:

Koehler 1015 RR Breakthrough
(a Red Baron son)

Koehler 1330 RR Times Square
(Breakthrough x Bison x Wheaton 4-086)

Koehler 1345 RR
(an Equinox son)

Koehler 1149 RR Buford
(a Paradigm son)

NOC 4042 RR
(Champion Slick Sheared Ram at 2014 NAILE)

ART FRAME

16465 Paul Ave | Worthington, MN 56187
507.376.4928 | aframe@nobleswildblue.com

BOB KOEHLER & FAMILY

1712 111th St | Slayton, MN 56172
507.836.8319 | koehl009@umn.edu

State Hampshire Associations

OHIO HAMPSHIRE SHEEP ASSOCIATION OFFICERS

President: Frank Sexten
3420 State Route 380
Xenia, Ohio 45385-9735
Phone: 937-371-1392
Email: fsexten@gmail.com

Secretary/Treasurer: Becky Sexten
565 Peterson Road
Xenia, Ohio 45385
Email: blsexten@gmail.com

Vice-President: Dustin Knapke
08372 Glynwood Road
Wapakoneta, Ohio 45895
Phone: 614-579-6841
Email: dustin.knapke@gmail.com

Board of Directors:
Tom Wise
Dan Shell

This information was provided by state Hampshire associations. We encourage all of our state Hampshire associations to submit information on their activities for each issue of the Hampshire Heartbeat.

ILLINOIS HAMPSHIRE SHEEP ASSOCIATION OFFICERS

President: Megan Mumm
49 CR 1300 N
White Heath, IL 61884
Phone: 217-377-2073
Email: meganmumm@hotmail.com

Secretary/Treasurer: Bill Chapin
5680 E Reed Rd
Coal City, IL 60416
Phone: 815-954-5129
Email: chapinhamps@gmail.com



Directors:
Chris Cahoon
Luke Benjamin
Chris Meyer
Charlotte Toohill

New England Hampshire Sheep Association Officers

President: Kyle Thayer
Vice President: Darlene Leary
Treasurer: Tina Fisk Colt
Secretary: Sue Searle

MINNESOTA HAMPSHIRE SHEEP ASSOCIATION OFFICERS

President: Bruce Bakken
29557 State Hwy 13
Hartland, MN 56042
Email: bjbakken54@gmail.com

Vice-President: Rod Scheller
3646 County Rd 37
Monticello, MN 56362
Email: rodscheller@gmail.com

Secretary/Treasurer: Art Frame
16465 Paul Ave.
Worthington, MN 56187
Email: aframe@nobleswildblue.com

Director: Mark Christensen
1561 250th Ave.
Tyler, MN 56178
Email: mcchris@frontiernet.net

Director: Gary T. Klug
Box 383
Harlan, IA 515372
Email: klughihamp@tm.net

Director: Reid Merrill
2163 250 St
Canby, MN 56220
Email: rvmerrill50@gmail.com

Director: Todd Schmidt
21407 775th Ave
Albert Lea, MN 56007
Email: rschmidt76@gmail.com

Director: Tom Bobendrier
1351 US Hwy 75
Pipestone, MN 56164
Email: shebob@svtv.com



SOUTH DAKOTA HAMPSHIRE SHEEP ASSOCIATION OFFICERS

President: Brent Larson
20205 477th Ave
White, SD 57576
Phone: 605-633-1561
Email: larson76@gmail.com

Vice President: David Juntunen
43950 187th Ave
Vienna, SD 57271
Phone: 605-628-2949
Email: jute@itctel.com

Secretary: Kristin Marshall
45491 204th ST
Arlington, SD 57212
Phone: 605-770-0132
Email: marshallke83@outlook.com

INDIANA HAMPSHIRE SHEEP ASSOCIATION OFFICERS

President: Dan Myers
833 E CR 350 S
Logansport, Indiana 46947
Phone: 574-355-6840
Email: indianahamps@gmail.com

Secretary/Treasurer: Kris Myers
833 E CR 350 S
Logansport, Indiana 46947
Phone: 574-355-6840
Email: indianahamps@gmail.com

PENNSYLVANIA HAMPSHIRE SHEEP ASSOCIATION OFFICERS

President/Secretary: Mindy Holtry
717-776-4192

The main focus of the PHS is to support junior Hampshire exhibitors at the Keystone International.

The Illinois State Fair Jr. Hampshire Show was held on Friday, August 12, 2016 and Hampshires from 12 individuals were shown. Champion Ram and Ewe were both won by Beau Mumm with his Fall Ram Lamb and his Yearling Ewe. Reserve Champion Ram went to Cailey Cahoon with her late Winter Ram Lamb and the Reserve Champion Ewe went to Ariana Bice's Winter Ewe Lamb. The overall Grand Champion Market lamb was a purebred Hampshire wether shown by Kashen Ellerbrock.

The Illinois State Fair Hampshire Open Show was held on Tuesday, August 16, 2016. There were a total of nine exhibitors that were judged by Mr. Dustin Cruitt and the Hampshire numbers ranked the breed in the top three at the State Fair. As always in Illinois, the classes ran deep with good sheep and many of the class winners have been and will be seen at numerous shows and are prominent on the National Stage. Champion Ram honors went to Jennifer Livermore's Yearling Ram and Reserve was won by Cahoon Farm's Late Junior Ram. Champion and Reserve Ewe both went to Luke Benjamin's Yearling Ewes.

Officers for 2016-2017 are:

- President: Megan Mumm
- Secretary/Treasurer: Bill Chapin
- Board of Directors:
 - Chris Cahoon
 - Luke Benjamin
 - Chris Meyer
 - Charlotte Toohill

The Hampshire breed continues to thrive in Illinois and is a force on the National level in both the areas of Breeding Stock and Market Lambs!

Bill Chapin - IHSA Secretary/Treasurer

AHSA Board of Director Elections



The board of directors is comprised of directors from eight districts and three at-large directors. Directors are elected for a three year term and may serve three terms before being retired for at least one term. There may be no more than two directors from any district and only one per state. Directors are asked to attend two board meetings per year and participate in some conference calls. Directors do not receive a salary, however, expenses are reimbursed to directors for one meeting of their choice, per year. The following director positions are up for election in 2016.

District 1- WA, OR, CA, NV, HI, AK

District 3- AZ, NM, TX, OK

District 5- NE, IA, KS, MO

District 7- KY, WV, VA, AR, TN, NC, SC, LA, MS, AL, GA, FL

District 8- PA, NY, VT, NH, ME, MA, CT, RI, NJ, DE, MD

District 2- MT, ID, WY, UT, CO

District 4- ND, SD, MN, WI

District 6- IL, IN, OH, MI

The following individuals have chosen to run for the AHSA board of directors. All senior members who have paid their annual dues in the last 24 months should have received a ballot. Envelopes with your ballot must be postmarked by November 2nd to be valid for the director's election.

District 3 - Randy Pirtle

My wife Susan and I live in Copan, Oklahoma. We have two daughters, Aspen Pirtle who teaches Ag Education just outside of Springfield, Illinois and Cassie Pirtle DVM who practices Vet Medicine at Collinsville, Oklahoma. Both girls were heavily involved in the sheep project while growing up in the Oklahoma program. Although their show career is over they are still heavily involved with the family operation. We still maintain a 100 head ewe flock with primary emphasis on the club lamb business.

I have served as the co-superintendent for the market lamb show at the Tulsa State Fair since 1994 and the Oklahoma Youth Expo since 2008. I served as the superintendent for the Collegiate Livestock Judging Contest at Tulsa for many years and still maintain some involvement with that event. I coached livestock judging teams for many years and additionally I have served on judging contest officiating committees on many occasions around the country. I have been blessed to be able to judge livestock shows throughout the country from coast to coast and meet so many great people.

I currently serve as an administrator for the extension service at Oklahoma State University. Spending over 30 years at the same university in a variety of positions has indeed been an honor. I still serve on the OSU Sheep and Goat Center committee among countless other groups. 4-H and FFA are close to my heart and I spend a lot of time annually in support of these great organizations. Whether it be providing showmanship clinics, judging speech contests, or sorting livestock shows my whole family is so dedicated to supporting the youth of 4H and FFA.

We have worked hard to develop our sheep operation in a manner to produce functional, practical, and competitive individuals for shows. Additionally we have always kept the production fundamentals relevant and at a high level of importance. The popularity of Hampshire sheep has grown so much at District 3 shows over the past decade. Two of the largest junior shows in the country happen to be in my district with the Oklahoma Youth Expo and Houston. There were over 1500 head of sheep shown at the Oklahoma Youth Expo this past spring with at least 1100 head being Hampshire or influenced. I have seen a distinct increase in both market and breeding numbers.

I have served two terms on the board of directors for the AHSA. I have seen a lot of changes over that period of time with the AHSA and Associated Registries. The future of the Hampshire breed is bright with continued growth expected and we also look forward to continued great relationships with the other associations that we assist as a part of the Associated Registries. It has been a pleasure serving District 3 and I ask for your support in allowing me to serve one more time.

District 4 - Brent Larson

My name is Brent Larson and I am seeking re-election of the District 4 director position on the American Hampshire Sheep Association Board. Our family has been in the Hampshire business since the 1960's, in 1999 the flock was acquired to form a family partnership known as L and L Hampshires. The flock is owned by my family, including my wife Gwen and children Brianna and Cody, along my brothers' family located in Nebraska. Our flock consists of about 20 mature ewes. We enjoy showing our Hampshires nationally and also on state and local levels. We also have a small number of Hampshire and Hampshire cross wether sire females that our kids show in 4-H and local shows. I am employed by Purina Animal Nutrition as a Livestock Production Specialist. My territory covers parts of South Dakota as well as parts of Minnesota.

I am interested in the board position to give my district common sense representation and to voice the opinions and ideas of my district breeders. I feel that the youth of our association and breed are ones to invest in. If we continue to invest in our youth now it will help secure a viable association for years to come. I also believe that our members deserve an association that is efficient in its outputs and does it in a fiscally responsible way. I believe that our Board and Executive Secretary are responsible for continually evaluating new ideas for which we can gain new registrations and transfers.

In closing I feel that it is very important for all Hampshire breeders to support the Hampshire organization and its leadership to assure a strong foundation to serve the Hampshire breed and other breeds that depend on services provided through Associated Sheep Registry. Again I ask for your support and your vote for the District 4 board position to serve the breed in its mission to meet the expectations of Hampshire sheep enthusiasts well into the future.

Best Regards,
Brent Larson

District 8 - Kaitlyn Parsons

Katelyn Parsons grew up on a commercial swine and sheep operation in Hadley, Massachusetts and after several years of showing commercial lambs as market lambs, she purchased two purebred Hampshire ewes from the New England Sale. Since then she has developed a passion for raising and exhibiting purebred Hampshire sheep.

While Parsons was in high school, she showed her Hampshire flock extensively, participating in several large livestock shows, including the All American Junior Sheep Show, the North American International Livestock Exposition, The Big E, the Keystone International Livestock Exposition and more. During this time, she grew her flock to about 25-head of ewes.

With help from her family, Parsons continued to raise and show her flock when she went to Oklahoma State University to major in agricultural communications and animal science. During her college tenure, she received the American Hampshire Sheep Association's scholarship.

Since her graduation in 2013 from OSU Parsons has been focused on her professional career, and she currently works as the director of marketing and membership for the Massachusetts Farm Bureau Federation. In this capacity, she is focused on raising public awareness of the Farm Bureau brand in Massachusetts and membership retention.

While work keeps Parsons busy, she has continued to raise and show her Hampshire sheep. Currently, she maintains a 20-head ewe flock in Massachusetts that she lambs and shows in her spare time.

At-Large - Gary T. Klug

I am asking for the members of the American Hampshire Sheep Association for their support as a candidate for the Member-at-Large position. I would enjoy the opportunity to serve the Association and its members in the promotion and upholding the standards of the Hampshire breed.

I am a firm believer that organizations exist for a reason. With that being said, when an organization is in existence, it needs purpose and goals. I am excited about the future of Hampshire sheep-I have been for an extended period of time- I admire the loyalty of breeders and enthusiasm they possess in pursuit of the raising of Hampshire sheep. Our ASHA has made many changes in the past few years-positive and progressive. I feel we have made strides in the marketing and the exposure of our Hampshires-I, also, feel we have many avenues left to explore-online, shows and sales and basic promotion of what our sheep do well-we have excellent examples and many different stories that our members have to share-we just need to ask them! I feel I can be a key asset in this arena. I have administrative skills and am a process thinker, based on my career work-regulator and currently, a food safety and quality assurance director for a meat company-always looking to improve quality, meet customer expectations and be market ready.

I have had Hampshire sheep since the 1970's-been around for awhile now-firm advocate of one needs to like the sheep they have in their back yard-there is room for all sizes and kinds of Hampshires. In the Industry. Long time WI native, until I moved to IA about 3.5 years ago. I am currently at about 40 ewes-our family participates in shows and sales around the Midwest under the farm name of Highland Hampshires.

Thank you for taking the time to read this brief biography-please consider me as a candidate for the member-at-Large position.

Thank you
Gary T. Klug Harlan, IA

At-Large - Derick Miller

I was born and have lived my life in the wind and sand blown town of Seagraves, Texas where today at the age of 31, I farm cotton, pecans, peanuts, grapes, and wheat alongside my wife Ashley, and daughters Reagan and Rylan.

My involvement in the sheep industry began at birth, where, as young as my memory will allow, I was beside my dad, Jim Miller with our family flock of Miller Hampshires. I currently assist in the day to day management of a flock of over 600 Hampshire ewes. When I graduated Texas Tech with a degree in Animal Science in 2006 my dad let me pick 10 head of Hampshires out of his keeper pen. With his guidance I have been able to steadily expand upon the 40 years of tradition and integrity that Miller Hampshires has represented in the industry.

I would enjoy to continue to representing you on the board of directors for the American Hampshire Sheep Association. In the past 3 years I have been on the board I feel like we have made huge strides in moving our breed forward. On many fronts I know we are in a better place as an association then we were 4 years ago. I feel that the youthful viewpoint I bring to the board contributes a much needed voice from a growing segment of our industry. In todays changing environment of embryo transfer, artificial insemination, and online marketing, it is important to keep a fresh perspective on the industry as a whole. The Hampshire breed has never been stronger nor has it ever held more interest then today. If re-elected I would work hard to keep the concerns of the members from all sides of the industry at the fore front of the board. I feel that every Hampshire that is registered makes our breed stronger and if elected I will promote the Association to best of my ability; I would appreciate your vote. Thank you.



**LOOKING TO ADD POWER AND STYLE
TO YOUR FLOCK ?**

THIS GUY'S FOR SALE!

LAND RUN 1603 QRNN

***TAKEDOWN X COOLER
CHAMPION RAM AT THE INDIANA STATE FAIR***

CALL US FOR DETAILS!

**THANK YOU TO ALL WHO PURCHASED SHEEP FROM US THIS SUMMER!
WE APPRECIATE YOUR BUSINESS.**

BE SURE TO LOOK FOR OUR FLOCK AT LOUISVILLE!

**LEARN MORE ABOUT OUR PROGRAM AT
WWW.FACEBOOK.COM/LANDRUNHAMPS**

Land Run Hamp's

**HUBBARD FAMILY • 342490 E 760 RD • AGRA, OK 74824
PH: 918.225.9743 • EMAIL: MEGAFARMS1@YAHOO.COM**

AMERICAN HAMPSHIRE SHEEP ASSOCIATION ONLINE SALE - JUNE 14, 2016

High selling ewe consigned by Land Run Hamps sold to Samuel Bacon, Brogue, PA.



Lot	Consignor	Buyer	Price
2	King Diamond Ranch	Jessica Ernst, London, OH	\$550
3	Land Run Hamps	Samuel Bacon, Brogue, PA	\$950
4	Bobendrier Hampshires	Grant Basting, Carlock, IL	\$700
6	Grant Basting	Kriston Hill, Elko, NV	\$552
7	Bobendrirer Hampshires	Carey Fulwider, Sheridan, IN	\$500
9	King Diamond Ranch	Abilene Gatson, Vandalia, MO	\$500
10	King Diamond Ranch	Jessica Ernst, London, OH	\$400

KJELDGAARD FARMS

"Our passion-sheep with style and size."



Al and Mary Kjeldgaard | 440 Co. Rd. IJ | Tekamah, NE 68061

almary@microlnk.com | 402.870.0397

Houghtaling Hampshires

Thanks to all
of our sale
and farm
buyers!

"Klaus", Houghtaling 15-575RR, was Reserve Champion Ram at the South Dakota State Fair and is making his rounds! This linebred rams pedigree is a throwback to several of our great studs of the past, tracing multiple times to Caskey 5187, Wheaton 01-35, DOA 7085, and "Sonic"



Houghtaling 15-600
Our lead yearling ewe



For more information visit www.houghtalingsheep.com

Houghtaling 15-689
5th place February ewe
lamb at the 2016
All American



Be sure to like
Houghtaling
Sheep on
Facebook to
stay up to date
on our flock
and sale
consignments!

Houghtaling 15-698RR
Our lead ram lamb
Sired by Klaus
Born 2/20/16



Jan, Kylene, Kelsey, Faith & Danielle
18522 407 Ave - Doland, SD 57436 - 605.635.6222 - janh@nvc.net

HAMPSHIRE SCENES



KLEINERT HAMPSHIRE

"Quality Breeding Lasts Forever"



2017 Sales:

**APRIL 1ST -
SPRING SALE**

**MAY 6TH -
PRODUCTION SALE**



**CHECK OUT OUR
STARS OF
LOUISVILLE
ENTRIES!**

Congratulations to State Fair Winners Sired by Kleinert Rams:

INDIANA -- CHAMPION HAMPSHIRE RAM, SIRE BY "TAKEDOWN" KLEINERT 4509 BRED BY LAND RUN FARMS

MINNESOTA -- CHAMPION COMMERCIAL EWE, SIRE BY KLEINERT 4515 BRED BY BRYCE AYRES FAMILY

IOWA -- RESERVE CHAMPION COMMERCIAL EWE, SIRE BY KLEINERT 4771 "MAGIC MIKE" BRED BY KIRSCHEN SHEEP FARM

Sires Used for 2017:

MILLER 0-175- MAKER X VINTAGE GENETIC FULL SIB TO 2012 HOUSTON GRAND

MASTER TOUCH KLEINERT 4690(PICASSO) X KLEINERT 4596(TAKEDOWN)

MILLER 0-470-MILLER MERCY X VINTAGE MATERNAL SIB TO 2012 FORT WORTH GRAND

KLEINERT 4983- KLEINERT 4690(PICASSO) X KLEINERT 4593(TAKEDOWN)

MIKE KLEINERT | KLEINERT HAMPSHIRE
2873 N 1600 EAST RD. | CLIFTON, IL 60297
H: 815.694.2727 | C: 815.383.0962
MIKE@KLEINERTHAMPSHIRE.COM
WWW.KLEINERTHAMPSHIRE.COM

Great Summer Action!



"Fab Five"



"STINGERR"

GREENWAY FARMS

Jon & Laird Mork | W6402 690th Ave | Beldenville, WI 54003
715-222-0700

MN State Fair, 3rd place Open Show yearling Ewe &
3rd 4-H Ewe. Twin sister sells in MN Bred Ewe Sale!

Thanks to Nick Show Team
Nick, Jon, Hanna, Ashley, Megan, Maddie



FLOCK CONSULTANT
NICK & MADDI SAGDALEN

The American Hampshire Sheep Association has T-shirts, hats and windbreakers for sale. These make excellent gifts for the Hampshire breeder in your family. They also can be used as door prizes at your association meetings. T-shirts and hats are priced at \$10/ each.

Windbreakers are priced at \$50/each. Shipping is dependent on the number of items ordered. Free delivery to NAILE, but you might want to place your order, prior to the show to be sure we have the items on hand.



HOWELL CLUB LAMBS



2017 Lambs Sired by:
Poe 4-D-3 * Cabaniss 5462-15 * Hays Bros. 15-47

Howell Club Lambs
8582 Township Line RD | Celina, OH 45822
PH. 419-953-0238 | Larryhowell@Bright.net
www.Howellclublambs.com

South Dakota State University Brookings, SD

"Performance driven Hampshires with style!"

WHEATON 6-189



BARELY LEGAL X WHEATON 8-075

*Thank you to all of our 2016 buyers at the sales and off the farm.
We are excited to add this young sire to our ram battery. Look for his lambs this coming spring!*

FOR MORE INFORMATION:

ANN KOLTHOFF | UNIT MANAGER | CELL 641-229-5379
JEFF HELD | SUPERVISOR | CELL 605-690-7033



NSIP EBV'S AVAILABLE FOR ALL LAMBS.
BE SURE TO FOLLOW US ON FACEBOOK FOR
FLOCK UPDATES AND PHOTOS!

SUMMEY FAMILY FARM

LIKE FATHER...



GOLDEN BOY
Held 14-1622 Supreme
Hampshire Ram 2015
Midwest Stud Ram Sale

LIKE SONS!



2016 California State Fair
Champion Hampshire Ram



2016 Nugget All American Reserve
Grand Champion Hampshire Ram

Thank you Jim Hickman from Washington for purchasing this pair of ewes.

2016 Crossroads Sale
Reserve Champion
Hampshire Ewe



2016 Crossroads
Sale Champion
Hampshire Ewe

All our show and sale sheep this summer were professionally fitted and shown by Cody Kinsman from Spring Creek Nevada (775) 388-4787. Cody thank you for your talent and friendship.



SUMMEY FAMILY FARM | BLAIR AND GINA SUMMEY
8200 MCCOURTNEY ROAD | LINCOLN, CALIFORNIA 95648
(H) 916-408-8738 | (C) 805-501-7500 | SUMMEYFAMILYFARM@GMAIL.COM

Summer is coming to an end, but we're still

Falling in Love... with these girls!



Gillmore - Davison 15-24

Champion Hampshire Ewe - KS State Fair
Res. Champ Hampshire Ewe - NE State Fair
Sired by: Bobendrier 14-06 "Thumper"
MGS: OK State 573



Gillmore - Davison 16-02

1st Place Early Ewe Lamb
Nebraska and Kansas State Fairs
Sired by: Bobendrier Rare 28
MGS: OK State 573



Willwerth Purple 21

Champion Ram and Res. Supreme Ram - NE State Fair
Champion Ram - KS State Fair

We are excited about this stud ram prospect! His pedigree is rich in Willwerth and Bobendrier genetics while tracing back to the legendary Deakin 1-776 ram.

Thank you to all who helped us at shows and sales this summer!
Be sure to find us in Louisville!

GILLMORE | DAVISON HAMPS

TOM GILLMORE • PHYLLIS DAVISON • Wichita, KS
Phyllis Cell: 316.841.8223 • phyldavison@gmail.com

INDEX TO HEARTBEAT ADVERTISERS

A	ANTIQUITY RIDGE VAN SICKLE	21	E	EBERT SHEEP FARM	42	H	HANCOCK HAMPSHIRE	58
B	BAA BAA ACRES						HELD HAMPSHIRE	14
	BOBENDRIER BOYS BOBENDRIER	31	F	FRAME-KOEHLER	43		HERRIG HAMPSHIRE	17
	HAMPSHIRE	INSIDE FRONT COVER					HIGHLAND HAMPSHIRE KLUG	37
C	CHAPIN HAMPS	19	G	GREENWAY FARMS	53		HOUGHTALING HAMPSHIRE	50
	CHAR-LAND FARMS	BACK COVER		GILMORE\DAVISON HAMPS	56	K	HOWELL CLUB LAMBS	54
							KING DIAMOND RANCH	21
							KJELDGAARD HAMPSHIRE	49
							KLEINERT HAMPSHIRE	52

L	LAND RUN HAMPS	48
	LYTLE'S HAMPSHIRE	28

M	MUMM HAMPSHIRE	25
----------	----------------	----

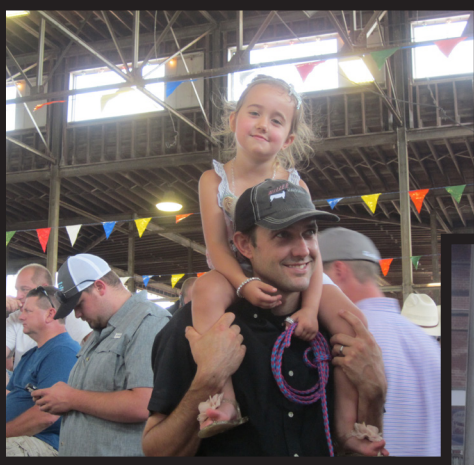
N	NELSON HAMPSHIRE	12
----------	------------------	----

P	PETERSON SHEEP CO	29
	PINE LAWN FARMS	5

R	RIKOW HAMPS	INSIDE BACK COVER
----------	-------------	-------------------

S	SIMPSON'S	16
	SLACK CLUB LAMBS	27
	SHEAR WE GO FARM SULLIVANS	11
	SOUTH DAKOTA STATE UNIVERSITY	54
	SPOONSTER HAMPS	30
	STRAWBERRY FIELDS	10
	SUMMEY FAMILY FARMS	55

W	WAGGONER HAMPSHIRE	42
----------	--------------------	----



HANCOCK HAMPSHIRE



Champion Hamp &
Supreme Champion
Market Lamb
2016 KY State Fair

“Oh My”
2016 Keeper
Ram Lamb



Fall Sales:
October 27th ---- Hancock
Bred Ewe Sale
November 3----- Exposed
Ewe Lamb Sale
November 11 ---- Premier
Bred Ewe Sale at NAILE

All sales are through
Willoughby Livestock

Hancock Hampshires | Mike Hancock
1255 Estesburg Rd | Eubank, KY 42567
H: 606-379-6575 | C: 606-305-2229
Herdsman, Trent Nichols: 859-612-7180
mike100@windstream.net



Rikow Hamps Trumped the Competition!



Rikow 6037 RR "Breakaway"

SIRED BY J & E 2-22 HOMEBOY

Champion Ram & 1st Jan. Ram Lamb - 2016 All-American Jr. Show

Champion Ram - 2016 NE Youth Sheep Show

1st Jan. Ram Lamb - 2016 NE Regional Hamp Show at the Big E



Rikow 5086 RR

SIRED BY J & E 2-22 HOMEBOY • MGS: FLASHBACK

1st Fall Ewe Lamb - 2016 NE Regional Hamp Show at the Big E

Thanks to Jenna Sullivan for your purchase of these two outstanding HOMEBOY offspring in our 2016 Online Sale.

Watch for them in Louisville!

THE 2016 STARS OF LOUISVILLE HAMPSHIRE SALE ENTRY:

Rikow 6047 RR • BD: 2-4-16 • Twin
Sire: Home Made (Homeboy son) • Dam: Acid Rain

This ewe's twin was one of the higher selling lamb in our online sale. Home Made is a huge, stout Homeboy son that sires style and wool! Acid Rain is one of the bigger ewes in our flock.

Congratulations!

Brandt Spilde, WI, on your success with Rikow genetics at the 2016 WI State Fair!

We're making plans for the 3rd Annual Rikow Hamps Online Sale in the spring of 2017!

We have an elite set of fall lambs on the ground, and they're looking great! Contact us to learn more.

RICHARD KRACKOW

ARCADIA, WI • RKDREALT@TRIWEST.NET • PH: 608.343.2899

WWW.RIKOWHAMP.COM

HAMPSHIRE HEARTBEAT

PO Box 21, 305 Lincoln

Wamgeo, Kansas 66547

Change Service Requested

Char-Land Farms



Supreme Champion Young Flock - 2016 OREGON STATE FAIR

ALL SIRED BY FELLER 919, THE YOUNG FLOCK CONSISTED OF:

CHAR-LAND 16-25
Champion Ram

CHAR-LAND FI5-44
1st Place Fall Ewe Lamb

CHAR-LAND 16-23
1st Place Spring Ewe Lamb

OTHER OREGON STATE FAIR SUCCESS INCLUDES:

RES. CHAMPION EWE
1ST PLACE FLOCK
1ST PLACE GET-OF-SIRE
1ST PLACE BEST PAIR

THANK YOU TO OUR FRIENDS AND SHOW HELP:

KURT BURNS • PAUL KUBER
MIKE RENOLDS • SHANE BLANCHARD
BONNIE JONES • LAUREN HENDERSON



Char-Land Farms / The Hanson Family / Woodburn, OR

Email: alekhanson@live.com / PH: 503.881.6550 / Facebook: Char-Land Farms