

# HAMPSHIRE

**Winter 2018**

*Heartbeat*



# Thank You

Thank you to all of the following buyers, and also to everyone who bid on our sheep in 2017. We are very humbled by your confidence in our breeding programs.



## Bobendrier Hampshires Buyers:

- |                        |                       |                        |
|------------------------|-----------------------|------------------------|
| Steve Anderson, MN     | Dettman Family, WI    | Courtney Ratliff, TX   |
| Evan & Nash Arthur, IL | Phylliss Eshelman, IA | Ray Kay Farms, MO      |
| Grant Basting, IL      | David Gowan, OR       | Luke Sannerud, MN      |
| Abram Benker, MN       | Highland Hamps, IA    | Shell's Hampshires, OH |
| Randy Berens, SD       | Josh Kirchenbauer, MN | Bill Sturtz, IA        |
| Sharon Carroll, OH     | Zach Lyman, MA        | Tonak Hampshires, SD   |
| Bill Chapin, IL        | Mumm Hampshires, IL   | Charlotte Torre, OH    |
| Tim Coss Family, MN    | Niemeyer Hamps, IL    | Michela Tymeson, MN    |

Sired by "Rare Rebel" and out of a "Final Edition" daughter. First fall ram lamb and senior champion ram NAILE 2017. Undefeated in class at IA, MN & SD and champion ram at SD and reserve at IA & MN.

## Bobendrier Boys Buyers:

- |                              |                             |
|------------------------------|-----------------------------|
| Dan Shell Family, OH         | Tanak Hampshires, SD        |
| Evan & Nash Arthur, IN       | Jolene & Wade Burggraff, SD |
| Bakken Family Hampshires, MN | Neil Roush, SD              |
| Courtney Ratliff, OK         | Jennifer Gunnick, MN        |
| Mumm Hampshires, IL          | King Family Hampshires, MN  |
| Mike Firestine, PA           | Ken Jensen, MN              |



Sired by Bobendrier Boys 15-16. First place January ewe lamb at 2017 NAILE Junior and Open shows. First place January ewe lamb at MN State Fair Open Show.

**Quality breeding stock always available, On the farm prices to fit anyone's budget, Money back guarantee, "Spider" free, Honest birthdates, and at least one R!**

*Special thanks to Craig Fleck and James Klamfoth for all of their professional help at Louisville and to Jeff Repasky and Riley Donkers for their professional help at Sedalia.*

## Bobendrier Boys

1351 Highway 75  
Pipestone, MN 56164  
shebob8@gmail.com  
507.215.0334

# SOLUTIONS

*for*  
**Success**

## Bobendrier Hampshires

1607 90th Ave.  
Pipestone, MN 56164  
jcbobendrier@gmail.com  
507.825.4072

**Check our website, [bobendrierhampshires.com](http://bobendrierhampshires.com) for availability.**

# CONTENTS

- 4** **CALENDAR OF EVENTS**  
A list of upcoming Hampshire events.
- 5** **PRESIDENT'S MESSAGE**  
Updates from Scott VanSickle.
- 6** **LAMBING TIME**  
Article by Dr. Alison Crane.
- 8-9** **HAMPSHIRE HERITAGE AWARDS**  
Featuring Poe Hampshires.
- 10** **RICHARD KRACKOW FEATURE**  
A feature on Richard Krackow.
- 13-19** **NATIONAL HAMPSHIRE SHOW RESULTS**  
Results from the National Hampshire Show in Louisville, KY.
- 20** **TIM & SARAH FLEENER FEATURE**  
A feature on Tim & Sarah Fleener.
- 23** **AHSA ONLINE SALE ENTRY FORM**  
Form for online sales sponsored by the AHSA
- 24** **REGISTRATIONS**  
Registrations by member, state and transfer by member.
- 26** **FUTURITY RESULTS FOR 2017**  
The Fitted Division and Slick Shorn Division results.
- 27** **AHSA ONLINE SALE**  
Information regarding the AHSA online sale.
- 28** **NEW SENIOR MEMBERS**  
Senior members recently joining the AHSA.
- 31** **ASHA FINANCIAL STATEMENT**  
The financial statement from 2017.
- 32** **AHSA 128TH ANNUAL MEETING**  
The meeting minutes from November 13th, 2017.
- 36-37** **STATE HAMPSHIRE ASSOCIATIONS**  
Contact Information for all State Hampshire Associations.
- 41** **WETHER SHOW RESULTS 2017**  
Results from each Hampshire weights.
- 42-43** **2017 AHSA SCHOLARSHIP WINNERS**  
The 6 winners for the AHSA Scholarship.
- 44** **JUNIOR BOARD MEMBERS**  
The list of the AHSA Junior Board members.
- 45-46** **JUNIOR APPLICATIONS**  
Applications for Junior Membership & Summer Internship with AHSA.
- 48-51** **JUNIOR HAMPSHIRE SHOW RESULTS**  
Results from the Junior National Hampshire Show in Louisville, KY.
- 52** **FROM AJHSA PRESIDENT**  
A letter from AJHSA president, Danielle Houghtaling
- 55** **HAMPSHIRE JUNIOR SHOW**  
Information regarding the Hampshire Junior Show during the National Hampshire Show at Sedalia.

# Calendar of Events

## MARCH

**12** Ebert Sheep Farm Early Born Wether & Ewe Lamb Sale hosted by [wlivestock.com](http://wlivestock.com)

## APRIL

**16** 48th Annual Ebert Sheep Farm Production Sale hosted by [wlivestock.com](http://wlivestock.com)

**24** Herrig Hampshires 4th Annual Online Sale hosted by [wlivestock.com](http://wlivestock.com)

**29** Rikow Hampshires Online Sale hosted by [wlivestock.com](http://wlivestock.com)

## MAY

**1** AHSA Online Ram & Ewe Sale hosted by [wlivestock.com](http://wlivestock.com)

**6** Double F Club Lambs Online Production Sale hosted by [wlivestock.com](http://wlivestock.com)

**10-12** Eastern Regional Hampshire Sale, Eaton, OH managed by Banner Sale Management

## JUNE

**2** Midwest Junior Preview Show, Sedalia, MO

**5** AHSA Online Ram & Ewe Sale hosted by [wlivestock.com](http://wlivestock.com)

**11** Ebert Sheep Farm Ram & Ewe Sale hosted by [wlivestock.com](http://wlivestock.com)

**25-30** National Hampshire Sale, Sedalia, MO managed by the Heartland Group

## JULY

**5-8** All American Junior Show, Indianapolis, IN

# Official Publication of the American Hampshire Sheep Association

PO Box 231, 305 Lincoln  
Wamego, Kansas 66547

Ph: 785-456-8500 Fax: 785-456-8599

[asregistry@gmail.com](mailto:asregistry@gmail.com) • [www.hampshires.org](http://www.hampshires.org)

EXECUTIVE SECRETARY: Jeff Ebert

ASSOCIATED REGISTRY STAFF: Joelle Sylvester, Janette Fund,

Morgan Huelsman, Landi Hill

### AHSA Board of Directors

President: Scott VanSickle

Vice President: Brent Larson

DISTRICT 1 - Lisa Hanson, OR

(503) 881-6550 - [alekhanson@live.com](mailto:alekhanson@live.com)

3rd term expires 2018

DISTRICT 2 - Jason Simpson, CO

(970) 371-0276 - [jsimponcl@aol.com](mailto:jsimponcl@aol.com)

2nd term expires 2020

DISTRICT 3 - Randy Pirtle, OK

(918) 440-4553 - [randy.pirtle@okstate.edu](mailto:randy.pirtle@okstate.edu)

3rd term expires 2019

DISTRICT 4 - Brent Larson, SD

(605) 633-1561 - [larsonb76@gmail.com](mailto:larsonb76@gmail.com)

2nd term expires 2019

DISTRICT 5 - Phyllis Davison, KS

(316) 841-8223 - [phylldavison@gmail.com](mailto:phylldavison@gmail.com)

3rd term expires 2018

DISTRICT 6 - Debbie Deal, OH -

(330) 607-1347 - [ddeal1957@aol.com](mailto:ddeal1957@aol.com)

3rd term expires 2020

DISTRICT 7 - Scott Van Sickle, KY

(270) 792-7173 - [vansickleantiquityridgefarm@gmail.com](mailto:vansickleantiquityridgefarm@gmail.com)

2nd term expires 2018

DISTRICT 8 - Katelyn Parsons

(413) 387-2726 - [katelyn@mfbf.net](mailto:katelyn@mfbf.net)

1st term expires 2019

AT-LARGE - Tom Bobendrier, MN

(507) 215-0334 - [shebob@svtv.com](mailto:shebob@svtv.com)

2nd term expires 2018

AT-LARGE - Derick Miller, TX

(806) 239-3670 - [millerpecanfarms@gmail.com](mailto:millerpecanfarms@gmail.com)

2nd term expires 2019

AT-LARGE - Jason Mumm, IL

(217) 377-2073 - [meganmumm@hotmail.com](mailto:meganmumm@hotmail.com)

1st term expires 2020

### Office Fee Schedule

#### A. MEMBERSHIPS

1. New Senior Membership	_____	\$25
2. Annual Senior Dues	_____	\$25
3. New Junior Membership	_____	\$15
4. Junior Dues	_____	\$15

#### B. REGISTRATIONS

Postmarked Sept 1 - April 30

1. Animals under 12 months	_____	\$4
2. Animals over 12 months	_____	\$8

Postmarked May 1 - August 31

1. Animals under 12 months	_____	\$6
2. Animals over 12 months	_____	\$12

#### C. TRANSFERS

1. Under 90 Days (from date of sale)	_____	\$10
2. Over 90 Days (from date of sale)	_____	\$20

#### D. DUPLICATE CERTIFICATE

_____	_____	\$5
-------	-------	-----

#### E. RUSH FEE (PER TRANSACTION)

_____	_____	\$5
-------	-------	-----

IF YOU WOULD LIKE TO HAVE YOUR SHOW OR SALE LISTED IN OUR CALENDAR OF EVENTS AND ON THE HAMPSHIRE WEBSITE, PLEASE EMAIL US THE INFORMATION. FOR SALES TO BE LISTED YOU MUST BE SELLING REGISTERED HAMPSHIRE.

# Greetings from your President

## Hampshire Breeders and Members,

As I write this letter, lambing season is in full swing and expectations are high. The decision of ram selection has been made months ago with many criteria considered for the impact that the sire has on half of the lamb crop. And for the ewes, the thoughts of which ones to keep based on lambing records, weaning weights and how the lambs grew out are all critical components to the success of the flock. Crosses are contemplated looking at genotypic and phenotypic traits, during breeding season records are kept all in anticipation of what the winter crop might be or not... Every season feels similar to me, trying new rams, holding on to those that have worked and the excitement of looking at ewes, with their pedigrees in my mind, keeping their daughters and having high expectations all the while.

So what expectations do we have for our association? What is our perception and what is the reality of the AHSA? What changes need to be made? How do we create a positive impact on as many Hampshire shepherds as possible? As you ask yourself these questions, if something comes to mind please contact someone on the board, or Jeff Ebert, as we would be happy to hear from you. The board is eager to hear new ideas and constructive criticism. We are continually evaluating the programs in place and are working to improve said programs as well as initiate new ones.

Currently, the board has some committees working on several new projects. One committee is working on improving promotional materials to be used at shows across the country. Another committee is working strictly with their focus on youth and youth opportunities. This has been one of the most significant additions to our association over the past several years, with a reinstated junior program, college scholarship opportunities, ambassadors and several other initiatives that our group is working on now. If you are a young person reading this, get involved! If you have questions or want more information, call or email your director and I am sure that they will be happy to put you in touch with the right folks. There are several other committees focused on current Hampshire activities across the country and looking at ways to improve efficiency, quality and helping keep a high standard of ethics in place.

Finally, I am happy to report that the Jeff and his elite team have added the opportunity of working with a few more associations, as the word gets out that accuracy and efficiency from the office is impeccable. For the AHSA, in 2017 we had an increase in registrations and transfers, up to 7984 and 3826 respectfully. Also, office efficiency is good as we continue to see quick turnaround times on paperwork. I am so appreciative of the hard work that is exhibited from the entire Kansas team!

Take care and happy lambing,

**Scott VanSickle**

**PS - We lost a friend in October of last year. Many of you knew Kenny Townsend and the great smile that he possessed. Kenny was one of the first "sheep folks" that I can remember from my childhood, always nice and ready to talk. I, as many of you, will sorely miss Mr. Townsend.**

## ADVERTISING IN THE HEARTBEAT

**\*\*Printed three times a year\*\***

**WINTER ♦ SPRING ♦ FALL**

You can choose to run an individual ad in a single issue of your choice, or choose a three-issue contract. Contract ads will be placed in three consecutive issues of the Hampshire Heartbeat. Contracts begin with the next available issue and run through the next two consecutive issues. Either an individual ad or a contract can be purchased at any time throughout the year. Prices for both types are listed below or advertises who provide ads ready for publication will receive a 15% discount on the listed prices. You may find more information at [www.hampshires.org](http://www.hampshires.org).

### DEADLINES

Winter Issue: January 15th

Spring Issue: May 1st

Fall Issue: September 15th

Ad size or Placement	Single Issue Price	Three Issue Contract Price
Inside Covers .....	\$450.....	\$900
2-Page Spread.....	\$550.....	\$1100
Full Page .....	\$350.....	\$700
3/4 Page .....	\$300.....	\$600
2/3 Page .....	\$275.....	\$550
1/2 Page .....	\$250.....	\$500
1/3 Page .....	\$210.....	\$420
1/4 Page .....	\$165.....	\$330
1/6 Page .....	\$125.....	\$250
1/8 Page .....	\$100.....	\$200

# LAMBING TIME

## DR. ALISON CRANE

Alison grew up in Warrior, AL. She received her B.S. in Animal Science in 2012 from Berry College in Rome, GA. Following graduation, Alison began her M.S. in ruminant nutrition at the NDSU Hettinger Research Extension Center in Hettinger, ND, which was completed in 2014, and received her Ph.D. in reproductive physiology in March 2017 under the directions of Drs. Christopher Schauer, Reid Redden, and Kendall Swanson. Alison's research program focused on most aspects of sheep production and extension including nutrition, reproductive physiology, as well as wool and carcass character. Dr. Crane is the new Extension Sheep & Meat Goat Specialist at Kansas State University and will have a regular column in the Hampshire Heartbeat with timely advice for Hampshire breeders and the sheep industry.

---



Depending on your operation, your lambing season could be completed, just starting, or coming soon, but no matter the exact time you lamb, it is no doubt one of the most exciting times of the year for sheep producers across the country. If you have purebred sheep, you might be waiting to see which ewes and rams produce your best stock for show or seed stock, while commercial producers, might be anxious to see which ewes produce your fastest growing, most efficient lambs. This time of year is definitely exciting for all sheep producers, as well as incredibly busy, and undoubtedly stressful. Possible stressors could include developing better late gestation and early lactation rations, determining your vaccination and deworming schedule or protocol for the upcoming lamb crop, or maybe it's identifying those trouble ewes in your flock that have bad teats, poor milk production, or regularly occurring dystocia issues. Hopefully, the information below can aid in relieving a few of those stressors you may encounter this lambing season.

Many producers wonder if they could be feeding their ewes better rations in late gestation/early lactation. The most important thing to remember is that one of the worst things you can do is overfeed your ewes throughout pregnancy. Overfeeding can cause many issues, like pregnancy toxemia and dystocia, but it can also make your operation less profitable. Body condition scoring (BCS) is a very reliable measure of ewe's general health and needs. Ewe's should be at a BCS 2.5 to 3 at late gestation. Requirements for ewes with multiple lambs are higher than those ewes with singleton pregnancies, and ewes should be fed accordingly. In early lactation, the target BCS for ewes should be between a 3 to 3.5. When ewes are carrying or nursing multiple lambs, a 0.5 increase in BCS is perfectly acceptable. In general, a 10-12% change in BW is needed to change BCS by one unit. When it comes to vaccinating ewes, the most effective time to vaccinate your ewe is 4 to 6 weeks prior to lambing. This timing allows for immunity to be passed to the lambs from the ewe. This is also convenient if you have wool sheep breeds and will already be shearing your ewes about a month prior to lambing. Some dewormers are also safe to use in this time period as well, but the labels should always be followed.

The most effective management tool we have as producers is record keeping; however, many producers take records and never use them. Ewes with bad udders or teats, or those that are poor mothers, should all be recorded during lambing time. With these records, you can make management decisions that will save you time and stress in the next lambing season, but also help you cull these traits from future generations of your flock. If you do not have an electronic identification system that can allow you to make notes on culling animals, I encourage you to develop a paint branding system that will allow you to sort animals easily for culling at the end of lambing. If you are a purebred producer, I also encourage you to enroll and submit data to the National Sheep Improvement Program to better utilize the data you are already recording. Similar to EPDs in cattle, estimated breeding values in sheep can help you make more efficient and informed decisions for your operation, and also bring more value to your seed stock animals. This allows your commercial flock customers to make more informed decisions about their purchasing decisions.

All in all, I encourage you all to continue to broaden the possibilities of your production systems and utilize the tools the industry continues to develop to hopefully, make your lives less stressful!  
Happy Lambing!

# CONSISTENT GENETICS CONSISTENT RESULTS



## ACTIVE DUTY

SIRED BY "OUTLAW"  
FIRST YEARLING RAM  
2017 NATIONAL HAMPSHIRE SHOW  
AND MINNESOTA STATE FAIR



## CASKEY 7611

SIRED BY SPECIAL EDITION  
THIRD MARCH EWE LAMB  
2017 NATIONAL HAMPSHIRE SHOW  
AND  
RESERVE CHAMPION EWE  
MINNESOTA STATE FAIR

**MIKE, CARRIE, JASON & KYLE CASKEY**

**1222 171ST ST. HOLLAND, MN 56139**

**PH: 507.347.3229 | CELL: 507.215.0266**

**MCCASKEY@WOODSTOCKTEL.NET | WWW.CASKEYPINELAWNFARMS.COM**



**PINE  
LAWN  
FARMS**

# HAMPSHIRE HERITAGE AWARD

## Poe Hampshires Established 1945

In the early 20th century in the Midwest, farming was a common occupation. At the time, Poe Farms had about 80 acres of row crops along with beef, sheep, swine, dairy, and poultry- raising most of their own food while also earning a living. In 1945, ten-year-old Stanley E. Poe along with his father, Walter D. Poe traveled to nearby Lakewood Farms of Edinburgh, IN. Lakewood was a nationally known Hampshire breeder at the time and shepherds L.T. Dwyer & Chan Davis struck a deal with young Stan to purchase his first Hampshires to start his 4-H career. They took notice in the excitement and interest the young man displayed in the project. Walter & Stan purchased 10 bred ewes for a total of \$1000 and Poe Hampshires was established.



When Stan joined 4-H one of the first lessons was how the commercial grade livestock he already owned would not be suitable for the show ring in order to achieve success. Growing up watching Lakewood Farms display championship genetics Stan took an interest in Hampshires under the guidance of L.T. Dwyer & Chan Davis.

### *Poe Hampshires, A Brief History...*

Over the years there hasn't been much change in the management of the flock other than the growth. Multiple members of the family have been more or less involved in the operation given the stage of their own lives. Stan Sr. ultimately managed the flock from the early years through his siblings' 4-H careers in the 1950s-60s. With meticulous production practices and constant research, Poe Hampshires quickly garnered national success in the 1950s-60s. Kenny and Alberta Poe, Stan's younger siblings managed the flock and showed the sheep while Stan was in and out of college and the military. Stan maintained about 160 ewes with Hampshires, Columbias & Southdowns during the 4-H careers of Stan II, Keegan and Cameron Poe. All three boys earned state and national recognition with a very lucrative tenure in the show ring.

When Stan II returned from college in 1988 he assumed a much more managerial role and began farming full time as Stan Sr. was working off the farm. From 1988-1991 Poe Hampshires experienced much added growth with 300 western ewes and about 220 breed ewes and the facilitation of club lamb sales. In 1995, Kalen Poe, the youngest of the Poe Family began 4-H and even though having a very successful 4-H career there was a shift in the focus of the farm with the added interest from the club lamb business. Poe Hampshires remained relevant in the production and show success of registered seedstock. However, the goals were to maintain more moderate, muscular sheep to produce more marketable wethers. Resulting in Poe Hampshires being some of the first slick sheared Hampshires you would see in the show ring. The late 90s-early 2000s would serve as the turning point of the operation with major success producing the Supreme Champion Wether Sire at the Midwest Stud Ram Sale in 1999, Champion Ram at the Indiana State Fair with "Undertow", a slick-

shorn ram in 2001, Premier Exhibitor at the National Hampshire Show with an entirely slick-shorn show string in 2002 and the Res. Grand Champion Market Lamb at the Oklahoma Youth Expo in 2004.

When Kalen was in high school he and Stan II began to form a partnership as Kalen grew older and took on more responsibilities on the farm. In 2003, Stan II and Kalen purchased the Charles Kirlin flock in its entirety and put ewe numbers to about 400. Poe Hampshires were also one of the initial flocks in the country to implement artificial insemination into their practices. During the 2000s, the flock developed into an innovative form of production technology and efficiency utilizing artificial insemination, semen processing, and embryo transfer to maximize their genetic potential as well as offering these services to outside clientele. These numbers remained while Kalen was in college and graduate school and in 2009 & 2011 the brothers brokered two





# HAMPSHIRE HERITAGE AWARD



other major purchases buying out Kevin Hoeng of Rushville, IN & Kent Langemeier of Mead, NE. These 220 additional ewes put the operation to over 600 head. Kalen's involvement increased through his college years developing many new business relationships across the country and in 2014 he returned home to the farm full-time.

Stan Poe II has been on the AHSA Board from 2003-2012 & served as President from 2009-2011. He was also one of the founding members of the All-American Junior Show.

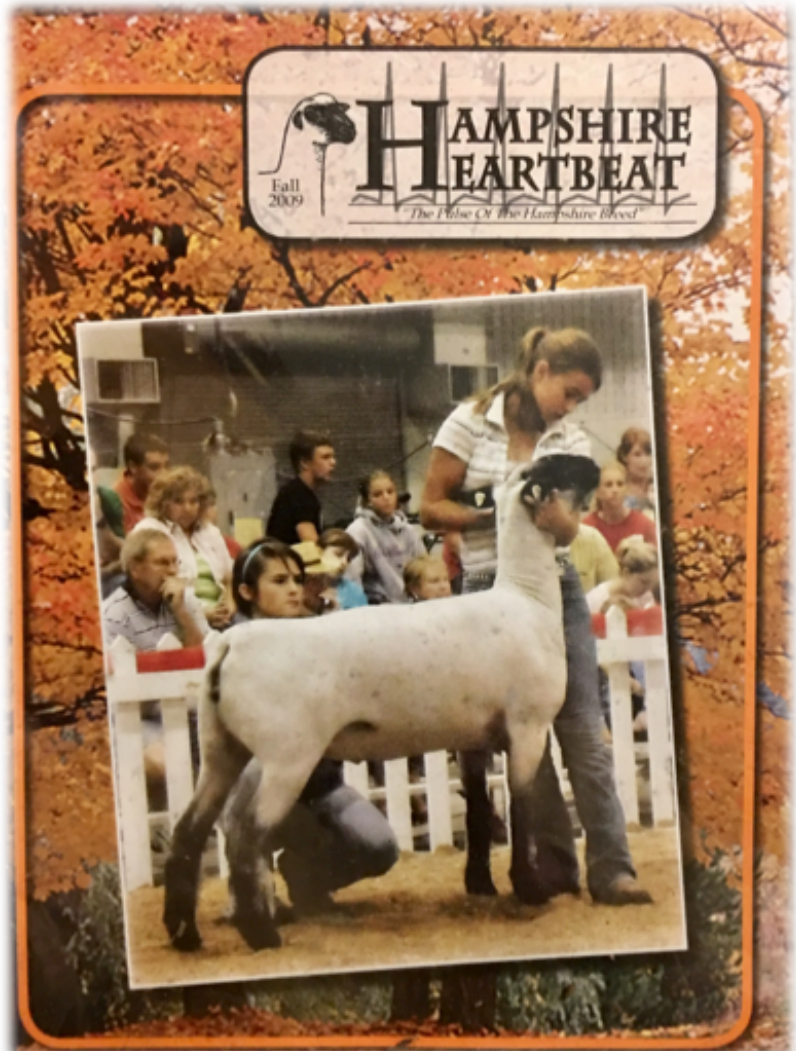
Poe Hampshires currently maintains 550 head of registered Hampshires and black-faced crossbred ewes. The operation thrives on customer success and their business model is designed to directly reflect the demand for moderate, correctly structured, muscular sheep that are versatile breeders with productive longevity. The top 80% of the projected 750 head of lambs born each year are marketed to other seedstock producers and 4-H families through six online sales, live auctions and privately. Poe

Hamps fills multiple segments of the market offering show sheep and seedstock of all ages along with frozen and fresh chilled semen. The lower 20% are marketed through local commercial producers and meat suppliers.

Management practices are kept current maintaining innovative technology. All brood ewes between the ages of 1-5 years are artificially inseminated on site in the state-of-the-art breeding facility. They also facilitate AI space for approximately 30 individual clients ultimately breeding around 1000 head annually on the farm.

The conception rates will average between 60-90% making the production scheme extremely efficient. AI groups are kept together with all progeny maintaining the same schedule for processing, vaccinations, and weaning. This also helps to facilitate the various markets they can achieve from across the country.

The farm utilizes their sheep as teaching tools whenever the opportunity arises given that each of the Poes was an active livestock judging team member. Poe Hamps have supplied classes at the Mid-America Classic in Hutchinson, KS, Houston Livestock Show, Indiana State 4-H/FFA Contest, and the North American Intercollegiate Livestock Judging Contest. Poe Hamps hosts tours for FFA groups during National FFA Convention held in Indianapolis, IN annually seeing over 800 students. Started in 2012, Poe Hamps is the first and only sheep operation in the country to host an official judging workout for high school and colligate judging teams traveling to NAILE. They have become a regular stop hosting more than 60 judging teams from across the country every year.



# Featuring Richard Krackow

## Introduce yourself & your family

I am Richard Krackow. I live on the farm my grandfather purchased in 1889. I just had a great nephew & his family build a house on the farm. I now have some chore help from his 4 and 6 year old daughters.

## Give us a brief description of your Hampshire Flock

I bought my first Hampshire's in 1964 and built from there, starting with Hogg & Hubbard Stock. I've been fortunate to have 15 Nat'l Champs & reserved Champions at Louisville over the years, along with countless sale champions.

## Why did you choose to include registered Hampshires in your sheep operation?

I graduated from WI Farm short course in 1964, where I was introduced to Hampshire's by Jim Elphich, & Dr. Art Pape. I showed at the Little International that year & was reserve champ showman with my Hamp ewe lamp. I was hooked!!

## What advice do you have for people starting out in the sheep business?

Go to reputable breeders & have them give you some pointers on selection & breeding.

## What are one or two items that you have found to be critical for the success of your sheep operation?

Keeping in contact with fellow breeders regarding sheep diseases & management.

## Who are some people that you credit for your success with Hampshires?

Dan & Kent Spilde, Bruce & Jill Lane

## What is your favorite sports team?

Have none, go pheasant hunting!

## What is your favorite food?

Lamp chops & shrimp

## What is the top item on your bucket list?

Visit New York City

## What is the favorite place you have visited?

Portland, Oregon & Columbia River Gorge

# Held Hampshires

AURORA, SD 57002  
JEFF | MARY | AUSTIN | AARON  
CELL (JEFF): 605.690.7033

[HELDHAMPSHIRE.COM](http://HELDHAMPSHIRE.COM) | [HELDHAMPS@GMAIL.COM](mailto:HELDHAMPS@GMAIL.COM)



2016 National Res. Champion Ram (Fitted) by our 2015 National Champion Ram, Held 14-1547 NNP RR. An excellent set of fall and spring lambs available in 2018!

**Held 15-1742 NNP RR**



1st yearling ewe Class 2 2017 NAILE, undefeated in 2016 and 2017 at IA, SD and NAILE

**Held 16-1798**



1st Flock Iowa and South Dakota State Fairs



**Held 17-1910 NNP RR**

Triplet Jan ram lamb that was 3rd Jan ram lamb at 2017 NAILE. Sired by Held 14-1547, we believe he has a very bright future in our breeding program.

**Held 17-1912 NNP RR**



2017 Champion Ram Iowa State Fair Sired by 2016 Res. National Champion Ram (fitted) and dam a top 2910 daughter, Held 10-1097. 1/2 interest sold Pullin Hampshires....both flocks are really excited for his lambs in 2018!!!



**Held 16-1865 NNP RR**

3rd Fall Ram at 2017 NAILE for Rabbit Creek, NV. Sired by Held 14-1547 NNP RR, we have some nice fall lambs by this stud!

Our 30 fall lambs are taking shape and along with January lambs we expect to have available top prospects at the farm and as consignments for the "Heart of Champions" and AHSA on-line sales; entries to the Midwest sale!!

Thank you to all the breeders that supported our program in 2017!!

# SIMPSON LIVESTOCK

Contact us for  
all of your  
breeding stock  
and club lamb  
needs!

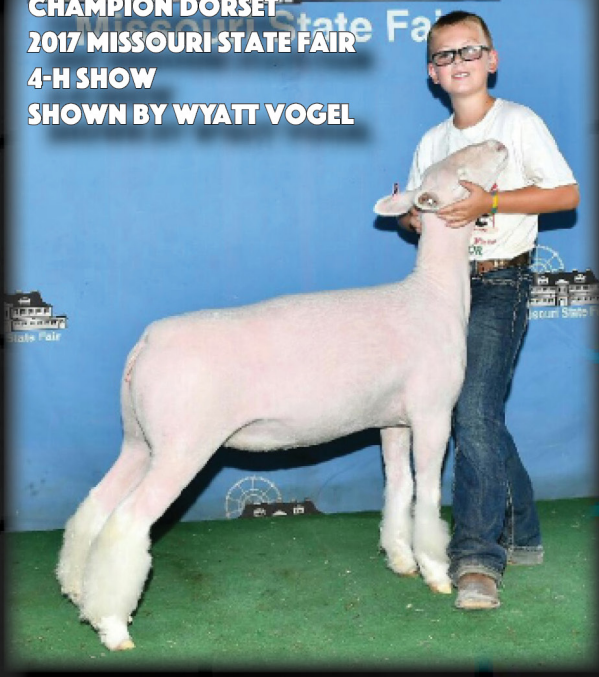
**GRAND CHAMPION 2017 TRI STATE FAIR  
SHOWN BY PATTON FAMILY**



**RESERVE GRAND  
CHAMPION 2017 BIRTHPLACE OF  
TEXAS JACKPOT  
SHOWN BY  
HAYDEN COME**



**CHAMPION DORSET  
2017 MISSOURI STATE FAIR  
4-H SHOW  
SHOWN BY WYATT VOGEL**



**RESERVE GRAND CHAMPION WETHER DAM  
2017 SAN ANTONIO LIVESTOCK SHOW  
SIRE BY ROYALTY**



**JASON, MARINDA & CADE SIMPSON  
AULT, COLORADO - (970) 371-0276 - WWW.SIMPSONLIVESTOCK.COM**

# North American International Livestock Exposition National Hampshire Show Results

Louisville, KY - November 15, 2017

Open Show Judges: Fitted- Steve Reid, MO - Slick-Shorn- Mark Johnson, IL

## -FITTED DIVISION-

### YEARLING RAMS

<b>1- Pine Lawn Farm - Caskey Family, MN</b>			
Caskey 6428 RR	1/4/16	601835	
<i>S: Caskey 4540 RR 598492</i>			
<i>D: Frame 1091 RR 35991D</i>			
<b>2- Strawberry Fields Hampshires, RI</b>			
Strawberry Fields 1626	3/5/16	595834	
<i>S: Strawberry Fields 1313 593494</i>			
<i>D: Strawberry Fields 0914 33250D</i>			
<b>3- Doug Peterson, SD</b>			
Peterson 9018-16009 RR	1/14/16	601357	
<i>S: Peterson 5824-1246 RR 594769</i>			
<i>D: Peterson 5611-1523 35606D</i>			
<b>4- Jesse Zirkle, VA</b>			
Gochenour 0216	2/6/17	600647	
<i>S: Gochenour 0191 598836</i>			
<i>D: Gochenour 0910G 22345D</i>			

### SENIOR RAM LAMBS

<b>1- Bobendrier Hampshires, MN</b>			
Bobendrier 16-174 "RareLegend"	10/10/16	602380	
<i>S: Bobendrier 15-60 NNPRR "RareRebel" 599125</i>			
<i>D: Bobendrier 13-49 NNP RR 42616D</i>			
<b>2- Strawberry Fields Hampshires, RI</b>			
Larson L&L 16-651	9/12/16	603458	
<i>S: BM WM 589 600184</i>			
<i>D: Larson L&amp;L 14-84 49407D</i>			
<b>3- Rabbit Creek Sheep Farms, LLC, NV</b>			
Held 16-1865 RR-NNP	10/13/16	602277	
<i>S: Held 14-1547 NNP 597311</i>			
<i>D: Held 10-1054 NNP 24764D</i>			
<b>4- Grant Basting, IL</b>			
Bobendrier 16-179 RR	10/11/16	602354	
<i>S: Hickman 1240 AI RR 600612</i>			
<i>D: Hickman 1090 RR 48045D</i>			

### SENIOR CHAMPION RAM

<b>Bobendrier Hampshires, MN</b>			
Bobendrier 16-174 "RareLegend"	10/10/16	602380	
<i>S: Bobendrier 15-60 NNPRR "RareRebel" 599125</i>			
<i>D: Bobendrier 13-49 NNP RR 42616D</i>			

### RESERVE SENIOR CHAMPION RAM

<b>Strawberry Fields Hampshires, RI</b>			
Larson L&L 16-651	9/12/16	603458	
<i>S: BM WM 589 600184</i>			
<i>D: Larson L&amp;L 14-84 49407D</i>			

### JANUARY RAM LAMBS

<b>1- Tingleigh Spoonster, MO</b>			
Insight Baa Baa Acres 236	1/7/17	602360	
<i>S: Held 15-1647 NNP RR 599084</i>			
<i>D: Baa Baa Acres 119 26193D</i>			
<b>2- Strawberry Fields Hampshires, RI</b>			
Niemeier 706	1/7/17	603004	
<i>S: Bobendrier 12-08 NNP QR 595147</i>			
<i>D: Niemeier 215 42126D</i>			
<b>3- Jeff Held, SD</b>			
Held 17-1910	1/26/17	602282	
<i>S: Held 14-1541 NNP 597311</i>			
<i>D: Held 14-1503 48157D</i>			

<b>4- Timber Lake Hamps - Justin Larsen, MN</b>			
Baa Baa Acres 238	1/14/17	602673	
<i>S: Held 15-1647 NNP RR 599084</i>			
<i>D: Baa Baa Acres 154 QR 38114D</i>			

<b>5- Beckett Spilde, WI</b>			
Rikow 7027	1/3/17	602767	
<i>S: J&amp;E Hamps 4-19 "Home Fire" 597795</i>			
<i>D: Knapp 820 42260D</i>			

<b>6- Bobendrier Hampshires 17-26 NNP RR</b>			
Bobendrier 17-26 NNPRR	1/4/17	601834	
<i>S: Caskey 6422 RR "Stealth" 601183</i>			
<i>D: Bobendrier 12-152 NNP QR 42609D</i>			

<b>7- Danielle Houghtaling, SD</b>			
Houghtaling 17-739 QRNNP	1/28/17	603683	
<i>S: Caskey 1296 RR 594551</i>			
<i>D: Houghtaling 12-391 40679D</i>			

<b>8- Bobendrier Boys, MN</b>			
Bobendrier Boys 17-18	1/14/17	603508	
<i>S: Caskey 6422 "Stealth" 601183</i>			
<i>D: Bobendrier Boys 0802 16413D</i>			

<b>9- Grant Basting, IL</b>			
Basting 199	1/10/17	603424	
<i>S: BH 15-39 NNPRR "Rare Elevation" 600012</i>			
<i>D: Basting 874 51439D</i>			

### FEBRUARY RAM LAMBS

<b>1- Jenna Sullivan, CT</b>			
Sullivan 1707	2/5/17	603245	
<i>S: Rikow 6037 601199</i>			
<i>D: Strawberry Fields 1320 42911D</i>			

<b>2- Bobendrier Hampshires, MN</b>			
Bobendrier 17-38 NNPRR	2/6/17	602387	
<i>S: Caskey 6422 RR "Stealth" 601183</i>			
<i>D: Bobendrier 14-67 NNP RR 48725D</i>			

<b>3- Ashton Daniels, MO</b>			
Plaza Hamps 1542	2/19/17	602997	
<i>S: Plaza Hamps 1130 RRNN 594272</i>			
<i>D: Knapp 828 RR 45160D</i>			

<b>4- Jeff Held, SD</b>			
Held 17-1923	2/25/17	603362	
<i>S: Held 15-1742 NNP-QR 600767</i>			
<i>D: Held 10-1073 NNP 24757D</i>			

<b>5- Strawberry Fields Hampshires, RI</b>			
Strawberry Fields 1711	2/2/17	603597	
<i>S: Strawberry Fields 1522 599783</i>			
<i>D: Strawberry Fields 1414 51141D</i>			

<b>6- Pine Lawn Farm - Caskey Family, MN</b>			
Caskey 7568RR	2/9/17	603528	
<i>S: Caskey 5626 RR 600494</i>			
<i>D: Kohler 1343 RR 47176D</i>			

<b>7- Fuller Sheep Farm-Dusty Fuller Family, SD</b>			
Fuller FSF 17TB	2/2/17	603416	
<i>S: Caskey 5640 RR "Fuller Edition" 601179</i>			
<i>D: Fuller FSF 15TI 55412D</i>			

<b>8- William Taylor, KY</b>			
Taylor Stock 767	2/23/17	602631	
<i>S: Caskey 2819 RR 596937</i>			
<i>D: Taylor Stock 31 RR 44269D</i>			

<b>9- Jessica Alf, WI</b>			
Alf 128-17 NNRR	2/2/17	602585	
<i>S: Caskey 4578 RR 598494</i>			
<i>D: Alf 48-14 NN RR 48473D</i>			

<b>10- Cailey Cahoon, IL</b>			
Cahoon 443	2/2/17	602757	
<i>S: Cahoon 306 593123</i>			
<i>D: Cahoon 351 45157D</i>			

### MARCH RAM LAMBS

<b>1- Rodney Anderson, WI</b>			
Baa Baa Acres Anderson 262	3/2/17	603264	
<i>S: Baa Baa Acres Anderson 226 RR "RRoss" 601508</i>			
<i>D: Baa Baa Acres Anderson 181 50737D</i>			

<b>2- Cailey Cahoon, IL</b>			
Cahoon 492	3/2/17	602758	
<i>S: Plaza Hamps 1144 RRNN "Fire Water" 596325</i>			
<i>D: Cahoon 398 50749D</i>			

<b>3- Vanessa Herrig, MN</b>			
Herrig 1159	3/1/17	602901	
<i>S: Caskey 5535 RR 599981</i>			
<i>D: Herrig 0894 RRNN 40038D</i>			

<b>4- Bobendrier Hampshires, MN</b>			
Bobendrier 17-47 NNPRR	3/32/17	603464	
<i>S: Bobendrier 15-60 NNPRR "RareRebel" 599125</i>			
<i>D: Bobendrier 16-18 NNPRR 61611D</i>			

<b>5- Pine Lawn Farm - Caskey Family, MN</b>			
Caskey 7647 RR	3/9/167	603531	
<i>S: Caskey 5421 RR 600231</i>			
<i>D: Frame 1102 35992D</i>			

<b>6- Strawberry Fields Hampshires, RI</b>			
Strawberry Fields 1712	3/2/17	603598	
<i>S: Larson L&amp;L 15-511 599827</i>			
<i>D: Strawberry Fields 1316 42909D</i>			

<b>7- Plaza Hamps, MO</b>			
Plaza Hamps 1370	3/22/17	602999	
<i>S: Plaza Hamps 1130 RRNN 594272</i>			
<i>D: Plaza Hamps 1125 RRNN 52447D</i>			

<b>8- Pine Lawn Farm - Caskey Family, MN</b>			
Caskey 7636	3/8/17	603534	
<i>S: Caskey 5421 RR 600213</i>			
<i>D: Caskey 1246 RR 35123D</i>			

### PAIR OF RAM LAMBS

<b>1- Strawberry Fields Hampshires, RI</b>			
--	--	--	--

<b>2- Bobendrier Hampshires, MN</b>			
-------------------------------------	--	--	--

<b>3- Jeff Held, SD</b>			
-------------------------	--	--	--

### JUNIOR CHAMPION RAM

<b>Tingleigh Spoonster, MO</b>			
Insight Baa Baa Acres 236	1/7/17	602360	
<i>S: Held 15-1647 NNP RR 599084</i>			
<i>D: Baa Baa Acres 119 26193D</i>			

### RESERVE JUNIOR CHAMPION RAM

<b>Jenna Sullivan, CT</b>			
Sullivan 1707	2/5/17	603245	
<i>S: Rikow 6037 601199</i>			
<i>D: Strawberry Fields 1320 42911D</i>			



### CHAMPION RAM

Tinleigh Spoonster, MO

Insight Baa Baa Acres 236 1/7/17 602360  
 S: Held 15-1647 NNP RR 599084  
 D: Baa Baa Acres 119 26193D



### RESERVE CHAMPION RAM

Jenna Sullivan, CT

Sullivan 1707 2/5/17 603245  
 S: Rikow 6037 601199  
 D: Strawberry Fields 1320 42911D

### YEARLING EWES - EARLY

- 1- Kjeldgaard Farms, NE  
 Kjeldgaard 16-858RR 1/5/16 64054D  
 S: Kjeldgaard 14-830RR "ControlFreak" 598628  
 D: Kjeldgaard 13-786 42733D
- 2- Plaza Hamps, MO  
 Plaza Hamps 1281 1/1/16 63256D  
 S: Lambert 15-06 600040  
 D: J and E Hamps 17 26008D
- 3- Jessica Alf, WI  
 Hickman 1261 RR 1/6/16 61078D  
 S: Hickman 1134 RR 598783  
 D: Wester 58 32166D
- 4- Bobendrier Boys, MN  
 Bobendrier 16-06 1/2/16 61605D  
 S: BH 13-20 NNP RR "Rare Feller" 595707  
 D: Bobendrier 12-59 NNP RR 40283D
- 5- William Taylor, KY  
 Taylor Stock 63 1/6/16 62626D  
 S: Caskey 2819 RR 596937  
 D: Taylor Stock 2207 39105D
- 6- Bobendrier Boys, MN  
 Bobendrier Boys 16-26 1/6/16 61880D  
 S: BH 15-34 NNP RR "Rare Stretch" 599123  
 D: Bobendrier Boys 13-46 45638D
- 7- Bobendrier Boys, MN  
 Bobendrier Boys 16-17 1/4/16 61879D  
 S: BH 13-20 NNP RR "Rare Feller" 595707  
 D: Bobendrier 13-02 RR 45642D

### YEARLING EWES - INTERMEDIATE

- 1- Jeff Held, SD  
 Held 16-1798 2/4/16 61485D  
 S: Held 14-1511 NNP RR 597309  
 D: Held 10-1029 24751D
  - 2- Rodney Anderson, WI  
 Baa Baa Acres Anderson 221 1/15/16 63583D  
 S: Baa Baa Acres Anderson 205 599847  
 D: Baa Baa Acres Anderson 181 50737D
  - 3- Tom Gillmore, NE  
 Willwerth Purple 20 2/16/16 60459D  
 S: Willwerth RD 103 QR 597083  
 D: Willwerth GR 48 RR 39349D
  - 4- Pullins Hamps, IA  
 Pullin 1616 2/16/16 61939D  
 S: Held 15-1656 NNP RR 599087  
 D: Pullin 1409 51300D
  - 5- Nelson Hampshires, CO  
 Nelson 16-22 QR 1/10/16 64713D  
 S: Bobendrier 13-60 NNP RR 595711  
 D: Nelson 7084 QR 98265D
  - 6- Mikara Anderson, PA  
 Peterson 9123-16086 RR 2/1/16 68145D  
 S: Rikow 4075 599562  
 D: Peterson 7126 60364D
  - 7- Beckett Spilde, WI  
 Spilde 2338 2/17/16 63075D  
 S: J and E Hamps 2-22 RR "Home Boy" 596111  
 D: Knapp 795 RR 35889D
  - 8- Doug Peterson, SD  
 Peterson 9191 1/23/16 63238D  
 S: Peterson 7121-3827 RR 598016  
 D: Peterson 5608-1541 QR 35612D
  - 9- Jeff Held, SD  
 Held 16-1770 1/28/16 61481D  
 S: Held 14-1511 NNP RR 598016  
 D: Held 14-1518 NNP 44273D
  - 10- Adam & Aaron Allen - 3ADH Farm, VA  
 3ADH Farm 16-51 2/6/16 62281D  
 S: Herrig 0962 RR NN 597319  
 D: Heishman 3ADH 14-15 RR 50079D
- ### YEARLING EWES - LATE
- 1- Jenna Sullivan, CT  
 Sullivan 1615 "Rachael" 2/20/16 62852D  
 S: Strawberry Fields 1520 597067  
 D: Bobendrier 14-10 NNP RR 48713D
  - 2- Kjeldgaard Farms, NE  
 Kjeldgaard 16-865 RR 3/15/16 65497D  
 S: Kjeldgaard 14-830RR "ControlFreak" 598628  
 D: Kjeldgaard 13-784 RR 42728D
  - 3- Rodney Anderson, WI  
 Baa Baa Acres Anderson 229 3/2/16 63558D  
 S: Held 15-1647 NNP RR 599084  
 D: Baa Baa Acres Anderson 130 RR NNP 26196D
  - 4- Rikow Hamps & Birschbach Hamps, WI  
 Mumm 1638 RR 2/19/16 61650D  
 S: Quam 4-111 RR NN ET 599565  
 D: Mumm 1415 RR 48403D
  - 5- Strawberry Fields Hampshires, RI  
 Strawberry Fields 1633 3/15/16 62853D  
 S: Strawberry Fields 1313 595834  
 D: Krackow Rikow 3081 48575D
  - 6- Beau Mumm, IL  
 Mumm 1666 3/7/16 61659D  
 S: Quam 4-111 RR NN ET 599565  
 D: Mumm 1503 RR 54690D
  - 7- Jenna Sullivan, CT  
 Sullivan 1616 "Monica" 3/9/16 62853D  
 S: MRVH 1047 (129) 593938  
 D: Larson L&L 49 45967D

- 8- Beau Mumm, IL  
 Mumm 1648 2/22/16 61654D  
 S: Quam 4-111 RR NN ET 599565  
 D: SDF 11-008 NNP RR 32397D
- 9- Strawberry Fields Hampshires, RI  
 Strawberry Fields 1635 3/21/16 62119D  
 S: Strawberry Fields 1313 595834  
 D: Strawberry Fields 1308 42903D
- 10- William Taylor, KY  
 Taylor Stock 612 2/19/16 62628D  
 S: Caskey 2819 RR 596937  
 D: Taylor Stock 31 44269D
- 11- Willow Manor/Torrove, PA  
 Golden Lane Farms 161 2/22/16 63294D  
 S: Caskey 3704 RR "New Edition" 597865  
 D: Golden Lane Farms 1511 R NNP 60896D
- 12- Vanessa Herrig, MN  
 Herrig 1114 3/15/16 64471D  
 S: Caskey 5535 RR 599981  
 D: Herrig 0991 RR NN 451094D

### PAIR OF YEARLING EWES

- 1- Kjeldgaard Farms, NE
  - 2- Rodney Anderson, WI
  - 3- Jenna Sullivan, CT
  - 4- Jeff Held, SD
  - 5- Bobendrier Boys, MN
- ### SENIOR EWE LAMBS
- 1- Strawberry Fields Hampshires, RI  
 Strawberry Fields 1701 10/20/16 71104D  
 S: Strawberry Fields 1532 601991  
 D: Strawberry Fields 1400 51144D
  - 2- Dylan Klug, IA  
 Klug HH 16-198T RR Benz 9/14/16 65559D  
 S: Bobendrier Boys 15-50 "Derby" 600453  
 D: Mercedes Ladies 13-03 43376D
  - 3- Bobendrier Hampshires, MN  
 Bobendrier 16-155 NNPRR 9/23/16 67450D  
 S: BH 13-20 NNPRR "Rare Feller" 595707  
 D: Bobendrier 13-35 42612D
  - 4- Jeff Held, SD  
 Held 16-1837 10/9/16 67134D  
 S: Held 14-1547 597311  
 D: Held 10-1055 24765D
  - 5- Jeff Held, SD  
 Held 16-1840 10/9/16 67136D  
 S: Held 14-1547 597311  
 D: Held 11-1221 36879D
  - 6- Faith Houghtaling, SD  
 Houghtaling 16-722 9/24/16 67073D  
 S: BM WM 506 600183  
 D: Houghtaling 15-601 QR 54677D
  - 7- Heishman Hampshires, VA  
 Heishman 16-72 RRNN 9/25/16 68617D  
 S: Larson L&L 14-86 QR NN 597712  
 D: Heishman 3ADH 14-02 RR 50077D

### SENIOR CHAMPION EWE

- Jenna Sullivan, CT  
 Sullivan 1615 "Rachael" 2/20/16 62852D  
 S: Strawberry Fields 1520 597067  
 D: Bobendrier 14-10 NNP RR 48713D

### RESERVE SENIOR CHAMPION EWE

- Kjeldgaard Farms, NE  
 Kjeldgaard 16-865 RR 3/15/16 65497D  
 S: Kjeldgaard 14-830RR "ControlFreak" 598628  
 D: Kjeldgaard 13-784 RR 42728D

**JANUARY EWE LAMBS**

1- Bobendrier Boys, MN			
Bobendrier Boys 17-05	1/2/17	67471D	
<i>S: Bobendrier Boys 15-16 RR 600107</i>			
<i>D: Schultz's 74 28263D</i>			
2- Cailey Cahoon, IL			
Cahoon 445	1/21/17	68629D	
<i>S: Plaza Hamps 1144 RRNN "Fire Water" 596325</i>			
<i>D: Cahoon 323 39488D</i>			
3- Jenna Sullivan, CT			
Larson L&L 17-702	1/6/17	70708D	
<i>S: Larson L&amp;L 16-613 597268</i>			
<i>D: Larson L&amp;L 63 43024D</i>			
4- Luke Benjamin, IL			
Benjamin 1715	1/14/17	70617D	
<i>S: Benjamin 1521 600168</i>			
<i>D: Riviera 627 (585) RR 16820D</i>			
5- Nelson Hampshires, CO			
Nelson 17-22 RR NNP	1/6/17	71157D	
<i>S: Bobendrier 13-60 NNP RR 595711</i>			
<i>D: Nelson 12089 RR 39708D</i>			
6- Jeff Held, SD			
Held 17-1897	1/8/17	67153D	
<i>S: Held 14-1547 NNP 597311</i>			
<i>D: Held 14-1588 NNP 48732D</i>			
7- Jeff Held, SD			
Held 17-1897	1/8/17	67154D	
<i>S: Held 14-1547 NNP 597311</i>			
<i>D: Held 14-1588 NNP 48732D</i>			
8- Jessica Alf, WI			
Cahoon 430	1/3/17	68621D	
<i>S: Cahoon 306 593123</i>			
<i>D: Cahoon 350 45155D</i>			
9- Bobendrier Hampshires, MN			
Bobendrier 17-05 NNP RR	1/2/17	67471D	
<i>S: Bobendrier Boys 15-16 RR 600107</i>			
<i>D: Bobendrier 12-98 NNP RR 37158D</i>			
10- Strawberry Fields Hampshires, RI			
Strawberry Fields 1707	1/26/17	71097D	
<i>S: Strawberry Fields 1522 599783</i>			
<i>D: Strawberry Fields 1201 39743D</i>			
11- William Taylor, KY			
Taylor Stock 71	1/2/17	68177D	
<i>S: Caskey 2819 RR 596937</i>			
<i>D: Taylor Stock 520 56149D</i>			
12- Danielle Houghtaling, SD			
Houghtaling 17-729 RRNNP	1/20/17	68828D	
<i>S: Houghtaling 15-575 599465</i>			
<i>D: Houghtaling 15-634 RR 59179D</i>			
13- Marshall Sheep Company, SD			
BM WM 709	1/7/17	67181D	
<i>S: Caskey 1296 RR 594551</i>			
<i>D: Larson L&amp;L 204 38137D</i>			
14- Beau Mumm, IL			
Held 17-1886	1/5/17	67149D	
<i>S: Held 16-1753 NNP RR 600769</i>			
<i>D: Held 14-1547 49886D</i>			

**FEBRUARY EWE LAMBS**

1- Tingleigh Spoonster, MO			
Spoonster 17-19 ET	2/1/17	67995D	
<i>S: Wheaton 5-058 NNP RR "Powerbilt" 579825</i>			
<i>D: Steffens 389 NNP QR 36285D</i>			
2- Jenna Sullivan, CT			
Sullivan 1712	2/17/17	70069D	
<i>S: Sullivan 1602 601606</i>			
<i>D: Strawberry Fields 1319 42910D</i>			
3- Pullin's Hamps, IA			
Pullin 1772	2/19/17	67945D	
<i>S: Held 15-1656 NNP-RR 599087</i>			
<i>D: Pullin 1409 51300D</i>			

4- Strawberry Fields Hampshires, RI			
Strawberry Fields 1710	2/2/17	71099D	
<i>S: Strawberry Fields 1522 599783</i>			
<i>D: Strawberry Fields 1414 51141D</i>			
5- Phyllis Davison, KS			
Gillmore-Davison 17-24	2/27/17	67955D	
<i>S: Willwerth Purple 25 601970</i>			
<i>D: Gillmore-Davison 17-24 36556D</i>			
6- Bobendrier Boys, MN			
Bobendrier Boys	2/16/17	71310D	
<i>S: Bobendrier 15-60 NNPRR "Rare Rebel" 599125</i>			
<i>D: Bobendrier Boys 10-05 QR 27571D</i>			
7- Plaza Hamps, MO			
Plaza Hamps 1321	2/20/17	69276D	
<i>S: Lambert 15-06 600040</i>			
<i>D: J and E Hamps 17 26008D</i>			
8- Pine Lawn Farm - Caskey Family, MN			
Caskey 7558 RR	2/8/17	70910D	
<i>S: Caskey 5508 RR 600215</i>			
<i>D: Frame 3627 47231D</i>			
9- Dylan Klug, IA			
Klug HH 17-206T	2/5/17	67522D	
<i>S: Bobendrier Boys 15-50 "Derby" 600453</i>			
<i>D: Klug HH 15-172T NNP 54680D</i>			
10- Jessica Alf, WI			
Alf 127-17 NNRR	2/12/17	68027D	
<i>S: Caskey 4578RR 598494</i>			
<i>D: Alf 11-11 31926D</i>			
11- Marshall Sheep Company, SD			
BM WM 761	2/1/17	67182D	
<i>S: Larson L&amp;L 14-92 RR NN 597715</i>			
<i>D: BM WM 163 58930D</i>			
12- Larry Hand, MO			
Rikow 7033	2/2/17	68652D	
<i>S: Rikow 6031 601201</i>			
<i>D: Peterson 5760 RR 40394D</i>			
13- Danielle Houghtaling, SD			
Houghtaling 17-766 RRNNP	2/4/17	68834D	
<i>S: Houghtaling 15-575 599465</i>			
<i>D: Houghtaling 15-608 QR 54680D</i>			
14- Taylor Stock Farm, KY			
Taylor Stock 770	2/27/17	68186D	
<i>S: Taylor Stock 534 599362</i>			
<i>D: Taylor Stock 516 56147D</i>			
15- Faith Houghtaling, SD			
Houghtaling 17-760	2/4/17	68831D	
<i>S: DOA 14-040 598235</i>			
<i>D: Houghtaling 14-512 RR 50231D</i>			
16- Arthur Nelson, SD			
Double A Ranch 135	2/1/17	68256D	
<i>S: Double A Ranch 121 600654</i>			
<i>D: Double A Ranch D-106 54026D</i>			
17- Lizzi Zirkle, VA			
Gochenour 0254	2/12/17	66959D	
<i>S: Heishman 3ADH 14-22 RR 597956</i>			
<i>D: Gochenour 0147 36340D</i>			
18- Lizzi Zirkle, VA			
Gochenour 0252	2/7/17	66958D	
<i>S: Heishman 3ADH 14-22 RR 597956</i>			
<i>D: Gochenour 0148 36341D</i>			

**MARCH EWE LAMBS**

1- Strawberry Fields Hampshires, RI			
Strawberry Fields 1713	3/2/17	7110D	
<i>S: Larson L&amp;L 15-511 RRNN 599827</i>			
<i>D: Strawberry Fields 1528 57627D</i>			
2- Tingleigh Spoonster, MO			
Spoonster 17-30	3/2/17	67323D	
<i>S: Held 15-1741 NNP-RR 600766</i>			
<i>D: Steffens 389 NNP QR 36285D</i>			

3- Pine Lawn Farm - Caskey Family, MN			
Caskey 7611 RR	3/1/17	70913D	
<i>S: Caskey 5508 RR 600215</i>			
<i>D: Caskey 5619 RR 60229D</i>			
4- Jenna Sullivan, CT			
Larson L&L 17-726	3/6/17	70716D	
<i>S: Strawberry Fields 1532 601991</i>			
<i>D: Larson L&amp;L 512 RRNN 57751D</i>			
5- Brian Gerth, WI			
Dream Hill 17-03	3/2/17	70509D	
<i>S: Mark Greenway B-1 600642</i>			
<i>D: Mark Greenway 20 45564D</i>			
6- Dylan Klug, WI			
Klug HH 17-213T QR	3/2/17	67528D	
<i>S: Bobendrier Boys 15-50 "Derby" 600453</i>			
<i>D: Klug HH 14-97T NNP 54083D</i>			
7- Luke Benjamin, IL			
Benjamin 1738	3/5/17	70619D	
<i>S: Benjamin 1521 600168</i>			
<i>D: Benjamin 1522 58530D</i>			
8- Pine Lawn Farm - Caskey Family, MN			
Caskey 7619 RR	3/5/17	70914D	
<i>S: Caskey 5527 RR 600216</i>			
<i>D: Frame 1035 RR 35981D</i>			
9- Jessica Alf, WI			
Alf 132-17	3/2/17	68303D	
<i>S: Caskey 4578 RR 598494</i>			
<i>D: Alf 43-14 48470D</i>			
10- Ashton Daniels, MO			
Plaza Hamps 1368	3/20/17	69273D	
<i>S: Lambert 15-06 600400</i>			
<i>D: Plaza Hamps 1122 RRNN 32445D</i>			
11- Rikow Hamps, WI			
Rikow 7036	3/2/17	68654D	
<i>S: Rikow 6031 601201</i>			
<i>D: Knapp 816 41833D</i>			
12- Ethan Kennedy, NY			
Royal 705	3/2/17	68850D	
<i>S: Rabbit Creek 1504 "Full Throttle" 599537</i>			
<i>D: Herrig 1081 RRNN 61403D</i>			
13- Kelsey Swonger, KS			
Newland 0435	3/28/17	70613D	
<i>S: Turdy 15-10 RR 600263</i>			
<i>D: Andrew 1137 32020D</i>			
14- Heishman Hampshires, VA			
Heishman 17-20 RRNN	3/10/17	70519D	
<i>S: Herrig 0962 RRNN 597319</i>			
<i>D: Blumenshein 14-20 50544D</i>			

**PAIR OF EWE LAMBS**

1- Tingleigh Spoonster, MO			
2- Strawberry Fields Hampshires, RI			
3- Jenna Sullivan, CT			
4- Bobendrier Boys, MN			
5- Dylan Klug, IA			
6- Jessica Alf, WI			
<b>JUNIOR CHAMPION EWE</b>			
Tingleigh Spoonster, MO			
Spoonster 17-19 ET	2/1/17	67995D	
<i>S: Wheaton 5-058 NNP RR "Powerbilt" 579825</i>			
<i>D: Steffens 389 NNP QR 36285D</i>			

<b>RESERVE JUNIOR CHAMPION EWE</b>			
Strawberry Fields Hampshires, RI			
Strawberry Fields 1713	3/2/17	7110D	
<i>S: Larson L&amp;L 15-511 RRNN 599827</i>			
<i>D: Strawberry Fields 1528 57627D</i>			



**CHAMPION EWE**

Jenna Sullivan, CT  
 Sullivan 1615 "Rachael" 2/20/16 62852D  
 S: Strawberry Fields 1520 597067  
 D: Bobendrier 14-10 NNP RR 48713D



**RESERVE CHAMPION EWE**

Kjeldgaard Farms, NE  
 Kjeldgaard 16-865 RR 3/15/16 65497D  
 S: Kjeldgaard 14-830 RR "ControlFreak" 598628  
 D: Kjeldgarrd 13-784 RR 42728D

**PREMIER EXHIBITOR**

Strawberry Fields Hampshires, RI

**-SLICK-SHORN DIVISION-**

**YEARLING RAMS**

- 1- David and Jim Van Cleave and Family, IL  
 VanCleave R-1610 "Freedom" 3/24/16 599116  
 S: Miller O-550 588176  
 D: Cabaniss 296-08W 53560D
- 2- Tim & Sarah Fleener, PA  
 Fleener 1661 3/10/16 600684  
 S: Fleener 1417 597347  
 D: Fleener 1514 55796D
- 3- Suzanna Storms, IL  
 Storms 621 2/21/16 600759  
 S: Johnson 4014 598037  
 D: Storms 546AI 56047D
- 4- Hobbs Show Lambs LLC, KS  
 Hobbs 5134 4/18/16 601145  
 S: Hobbs 5134 599160  
 D: Impact 1342 53008D
- 5- Rachel Flanders, IN  
 Flanders VIP 6230ET 3/3/16 600860  
 S: Dee Brothers LCC 596227  
 D: Flanders VIP 3652 43267D
- 6- Michael Torrone III/Swingin T Ranch, OK  
 Creason 7708-0104 2/28/15 601178  
 S: Leventini 4068 597338  
 D: Creason 7708-0064 57630D

**FALL RAM LAMBS**

- 1- Abigail Wilson, NC  
 Lazy 5 2950 10/1/16 602220  
 S: Miller O-611 "Picasso" 588182  
 D: Lazy 5 0949 40486D
- 2- Abigail Wilson, NC  
 Lazy 5 2952 10/1/16 602222  
 S: Miller O-611 "Picasso" 588182  
 D: Stizlein Farms W1629 39770D
- 3- Abigail Wilson, NC  
 Lazy 5 2954 10/1/16 602224  
 S: Miller O-611 "Picasso" 588182  
 D: Stizlein Farms W1629 39770D

**JANUARY RAM LAMBS**

- 1- Tim & Sarah Fleener, PA  
 Fleener 1703 "Grey Goose" 1/4/17 602390  
 S: Allen Show Lambs IA 2210 G299ET 601449  
 D: Fleener 1514 55796D
- 2- Campbell, Corbin & Clark Coyle, KY  
 Poe 7151 1/16/17 602664  
 S: Wheaton 4-112ET RRNN 598740  
 D: KPoe 9006 23343D
- 3- Alivia Porter, IL  
 Kleinert 5016 1/12/17 603707  
 S: Kleinert 4860 600602  
 D: Kleinert 4335 27510D
- 4- Rachel Flanders, IN  
 Flanders VIP 7632 RRNN 1/28/17 603724  
 S: Flanders VIP 5220 RRNN 600871  
 D: Shroyer 350 Pink 63778D

**FEBRUARY RAM LAMBS**

- 1- Morgan Hauger, IN  
 Hauger 0280 2/16/17 603127  
 S: Poe Blue 25 601572  
 D: Shroyer 1109 YE 43442D
- 2- Land Run Hamps, OK  
 Land Run 486 2/23/17 602551  
 S: Wheaton 6-105 RR "Going Rogue" 602158  
 D: Wheaton 1-013 34213D
- 3- Alivia Porter, IL  
 Storms 661AI 2/19/17 603483  
 S: Ellerbrock BK 1725 598050  
 D: Storms 546AI 56047D
- 4- Kyle & Jen Fleener, PA  
 FCL 1718 2/2/17 603422  
 S: Allen Show Lambs IA 2210 G299ET 601449  
 D: FCL 1315 46303D
- 5- WEG & I-80 Flocks/Virginia Gergen, NE  
 WEG F-735 2/15/17 603478  
 S: Swearingen SS 14-3 602026  
 D: WEG S-620 NNPQR 94544C
- 6- NOC Sheep Center, OK  
 NOCCM-638-7052 2/10/17 603478  
 S: NOCGM 3136-6088 "Game Over" 601908  
 D: Northern Oklahoma HI-717-4150 27962D

**MARCH RAM LAMBS**

- 1- Land Run Hamps, OK  
 Land Run 1710 3/6/17 602549  
 S: Slack 5288 599349  
 D: Land Run 1110 31791D
- 2- Alivia Porter, IL  
 Storms 670 AI 3/7/17 603056  
 S: Williams 5656 599700  
 D: Storms 568 56053D
- 3- Tim & Sarah Fleener  
 Fleener 1780 3/30/17 Pending  
 S: Allen Show Lambs IA 2210 G299ET 601449  
 D: Miller P-4624 41744D

- 4- Morgan Hauger, IN  
 Hauger 0286 3/5/17 603125  
 S: Poe Blue 25 601572  
 D: Poe 5064-15AI 56205D
- 5- Rachel Flanders, IN  
 Flanders VIP 7595 3/2/17 603725  
 S: Flanders VIP 6149 600859  
 D: Flanders VIP 6145 ET RRNN 61799D

**PAIR OF RAM LAMBS**

- 1- Land Run Hamps, OK
- 2- Tim & Sarah Fleener, PA
- 3- Alivia Porter, IL
- 4- Morgan Hauger, IN
- 5- Abigail Wilson, NC



**CHAMPION RAM**

David and Jim Van Cleave and Family, IL  
 VanCleave R-1610 "Freedom" 3/24/16 599116  
 S: Miller O-550 588176  
 D: Cabaniss 296-08W 53560D



**RESERVE CHAMPION RAM**

Morgan Hauger, IN  
 Hauger 0280 2/16/17 603127  
 S: Poe Blue 25 601572  
 D: Shroyer 1109 YE 43442D

**YEARLING EWES - EARLY**

- 1- Jordyn Leininger, IN  
 Slack 6252 2/7/16 63159D  
 S: Slack 4118 "Bottoms Up" 599620  
 D: Slack E4155 50147D
- 2- Ty Thorson, WI  
 Rupnow 1111 2/11/16 61547D  
 S: Ott 3822 596582  
 D: Rupnow 1045 49345D



3- Ty Thorson, WI Metro 1604 <i>S: Nelszen 1599</i> <i>D: Metro 909</i>	1/15/16	56087D 59092S 44382D
4- Rachel Flanders, IN Flamnders VIP 5400 <i>S: Flanders VIP 3556</i> <i>D: Shellhouse 203</i>	9/5/15	65421D 590957 25918D
5- WEG & I-80 Flocks/Virginia Gergen, NE WEG R-1514 <i>S: Swearingen SS 14-3</i> <i>D: Swearingen SS 1415</i>	9/3/15	71197D 602026 52632D
6- David and Jim Van Cleave and Family, IL VanCleave G-1699 <i>S: Van Cleave 1480 AI ET RRNN</i> <i>D: Van Cleave G-1482 AI ET RRNN</i>	1/10/16	65181D 598678 52430D
7- Campbell, Corbin & Clark Coyle, KY Wheaton 6-098 <i>S: Wheaton S-018 ET RR "Barely Legal"</i> <i>D: Wheaton 2-062 ET</i>	1/26/16	66340D 600530 53245D
8- Alivia Porter, IL Kleinert 4891 <i>S: Kleinert 4516</i> <i>D: Kleinert 4453</i>	1/8/16	66517D 595518 47088D
9- Ty Thorson, WI Metro 1608 <i>S: Ott 3822</i> <i>D: Metro 316</i>	1/25/16	61548D 596582 24343D
10- WEG & I-80 Flocks/Virginia Gergen, NE WEG R-1518 <i>S: Swearingen SS 14-3</i> <i>D: WEG I-80 W-210</i>	9/7/15	71198D 602026 38612D
11- Campbell, Corbin & Clark Coyle, KY Terradise 6108 <i>S: Miller O-953 ET</i> <i>D: Terradise 1428 AI</i>	1/11/16	62059D 593678 48923D
12- Corbin Coyle, KY Poe 5319-15 <i>S: Poe 9118-09</i> <i>D: Poe 2128-12</i>	1/15/15	56212D 588705 56211D
<b>YEARLING EWES - LATE</b>		
1- Land Run Hamps, OK Land Run 445 <i>S: Slack 5288</i> <i>D: Land Run 375 RRNN</i>	4/1/16	62990D 599349 48888D
2- Land Run Hamps, OK NOC RM-2026-6130 <i>S: Miller O-456</i> <i>D: Northern Oklahoma PB 272-2026</i>	4/1/16	64741D 598788 40519D
3- Miranda Hunter, DE Poe 6342-16 <i>S: Poe 3394-13 4D3</i> <i>D: Poe 9216-09</i>	2/17/16	62976D 599351 28399D
4- Kyle & Jen Fleener, PA FCL 1613 <i>S: Barton 2090</i> <i>D: FCL 1315</i>	2/18/16	62426D 596138 46303D
5- Abigail Wilson, NC Lazy 5 2940 <i>S: Miller O-611 "Picasso"</i> <i>D: Stizlein Farms W1629</i>	4/1/16	63802D 588182 39770D
6- Rachel Flanders, IN Flanders VIP 6288 <i>S: Team Johnson P 1785</i> <i>D: Flanders VIP 4095</i>	2/19/16	61788D 593765 49111D
7- NOC Sheep Center, OK NOC RM-3149-6167 <i>S: Miller O-456</i> <i>D: Northern Oklahoma SS-121-3149</i>	4/11/16	64749D 598788 45862D
8- Kyle & Jen Fleener, PA FCL 1620 <i>S: Barton 2090</i> <i>D: FCL 1312</i>	3/5/16	62430D 596138 51163D
9- Abigail Wilson, NC Lazy 5 2944 <i>S: Miller O-611 "Picasso"</i> <i>D: Stizlein Farms W16237</i>	2/18/16	64411D 588182 39770D
10- NOC Sheep Center, OK RM-3042-6079 <i>S: Miller O-456</i> <i>D: Northern Oklahoma MG-1123-3042</i>	3/19/16	64757D 598788 45839D
11- Abigail Wilson, NC Lazy 5 2939 <i>S: Miller O-611 "Picasso"</i> <i>D: Lazy 5 2501 AI</i>	4/1/16	63801D 588182 45258D
12- Campbell, Corbin & Clark Coyle, KY Terradise 6133 <i>S: Allred/Elliott 5024G</i> <i>D: Flanders VIP 4095</i>	3/3/16	62032D 593765 49111D
<b>PAIR OF YEARLING EWES</b>		
1- Land Run Hamps, OK		
2- Ty Thorson, WI		
3- Rachel Flanders, IN		
4- WEG & I-80 Flocks/Virginia Gergen, NE		
5- NOC Sheep Center, OK		
6- Abigail Wilson, NC		
<b>SENIOR EWE LAMBS</b>		
1- Morgan Hauger, IN Poe 7126 <i>S: Wheaton 4-112 ET "The Full Monty"</i> <i>D: Poe 1268-11</i>	12/10/16	68333D 598740 34548D
2- Abigail Wilson, NC Lazy 5 2955 <i>S: Lazy 5 2910 ET</i> <i>D: Lazy 5 2920</i>	10/3/16	66890D 600101 59097D
3- Rachel Flanders, IN Flanders VIP 6526 <i>S: Dee Brothers LLC 3212</i> <i>D: Flanders VIP 4064</i>	9/1/16	69550D 596228 49119D
4- Land Run Hamps, OK Land Run 1615 <i>S: Land Run 387 RRNN</i> <i>D: Land Run 1302</i>	9/1/16	66009D 599198 43281D
5- Campbell, Corbin & Clark Coyle, KY Poe A7076-17 <i>S: Poe 7050-07</i> <i>D: Poe 2128-12</i>	12/8/16	68324D 588708 56211D
6- Korbin Haminger, IN Poe 7309 AI <i>S: Wheaton 4-112 ET "The Full Monty"</i> <i>D: Poe 1268-11</i>	12/25/16	71336D 598740 34548D
<b>SENIOR CHAMPION EWE</b>		
Land Run Hamps, OK Land Run 445 <i>S: Slack 5288</i> <i>D: Land Run 375 RRNN</i>	4/1/16	62990D 599349 48888D
<b>RESERVE SENIOR CHAMPION EWE</b>		
Morgan Hauger, IN Poe 7126 <i>S: Wheaton 4-112 ET "The Full Monty"</i> <i>D: Poe 1268-11</i>	12/10/16	68333D 598740 34548D
<b>JANUARY EWE LAMBS</b>		
1- Rachel Flanders, IN Flanders VIP 7496 <i>S: Flanders VIP 5220 RRNN</i> <i>D: Flanders VIP 6221</i>	1/13/17	69127D 600871 61801D
2- Sidney McAllister, OH Shroyer 1848 Yellow <i>S: Shroyer 148 555 "Ringo"</i> <i>D: Shroyer 501 PR</i>	1/15/17	72022D 596543 22864D
3- Rachel Flanders, IN Flanders VIP 7455 <i>S: Flanders VIP 4030 RRNN</i> <i>D: Flanders VIP 5088 AI</i>	1/7/17	69093D 597637 49104D
4- Ty Thorson, WI Metro 1714 <i>S: Ellerbrock 3489 ET</i> <i>D: Metro 417</i>	1/24/17	67235D 601870 49198D
5- Miranda Hunter, DE Poe A7102-17 AI <i>S: Poe 7050-07</i> <i>D: Poe 3598-14</i>	1/9/17	68315D 588708 71796D
6- Justin Powell, OH Fleener 1729 <i>S: Barton 2090</i> <i>D: Fleener 1442</i>	1/20/17	67494D 596138 51852D
7- Jordyn Leininger, IN Slack 7104 <i>S: Slack 4118 "Bottoms Up"</i> <i>D: Slack E 4156</i>	1/10/17	68881D 599620 50145D
8- Abigail Wilson, NC Lazy 5 2971 <i>S: Lazy 5 2914ET</i> <i>D: Lazy 5 0949</i>	1/3/17	69661D 600095 40486D
9- Tim & Sarah Fleener, PA Fleener 1710 <i>S: Fleener 1661</i> <i>D: Fleener 1408</i>	1/11/17	67490D 600684 51847D
10- Campbell, Corbin & Clark Coyle, KY Poe A7220-17ET <i>S: Rule RSC F3994 ET "Reign On"</i> <i>D: Poe 7360-07</i>	1/20/17	68326D 599775 16612D
11- Morgan Hauger, IN Poe 7240 <i>S: Rule RSC F3994 ET "Reign On"</i> <i>D: Poe 7360-07</i>	1/24/17	68336D 599775 16612D
12- Kayla Ritter, OH Poe 7090-17 <i>S: Wheaton 4-112ETRRNN "The Full Monty"</i> <i>D: Poe 4437-14</i>	1/9/17	68332D 598654 51777D
13- Abigail Wilson, NC Lazy 5 2973 <i>S: Lazy 5 2914 ET</i> <i>D: Lazy 5 2514 AI</i>	1/20/17	69490D 600095 50979D
14- Tim & Sarah Fleener, PA Fleener 1714 <i>S: Allen Show Lambs IA 2210 G299ET</i> <i>D: Fleener 1220</i>	1/14/17	67491D 601449 36715D
15- Morgan Hauger, IN Poe 7205 <i>S: Rule RSC F3994 ET "Reign On"</i> <i>D: Poe 1047-11</i>	1/20/17	68369D 599775 34544D
16- Clark Coyle, KY Poe A7028-17 <i>S: Rule RSC F3994 ET "Reign On"</i> <i>D: Poe 1038-11</i>	1/7/17	68321D 599775 50756D
17- Korbin Heminger, IN Poe 7211 AI <i>S: Wheaton 4-112ETRRNN "The Full Monty"</i> <i>D: Poe 3566-14</i>	1/5/17	71337D 598654 51794D
18- Land Run Hamps, OK Land Run 470 <i>S: Slack 5288</i> <i>D: Land Run 405 QRNN</i>	1/30/17	67925D 599349 57421D

19- NOC Sheep Center, OK  
 NOC RM-3095-7006 1/10/17 70740D  
 S: Miller O-456 598788  
 D: Norther Oklahoma PC-400-3095 45847D

20- Ty Thorson, WI  
 Rupnow 1202 1/7/17 67248D  
 S: Ellerbrock 3489 ET 601870  
 D: Rupnow 970 41089D

21- Campbell Coyle, KY  
 Poe A7160-17 1/17/17 68322D  
 S: Wheaton 4-112ETRRNN "The Full Monty" 598654  
 D: Poe 1031-11 50724D

22- Sidney McAllister, OH  
 Shroyer 1833 Yellow 1/15/17 72023D  
 S: Shroyer 148 555 "Ringo" 596543  
 D: Shroyer 501 PR 22864D

23- Skilar Burch, TN  
 Friesen 1725 ET 1/2/17 67735D  
 S: Wheaton 50147ETRR "Wild Child" 600531  
 D: Miller P-3960ET 17893D

## FEBRUARY EWE LAMBS

1- Jordyn Leininger, IN  
 Slack 7160 2/1/17 68883D  
 S: Slack 3337 599348  
 D: Slack 3486 47263D

2- Abigail Wilson, NC  
 Lazy 5 2983 2/24/17 69648D  
 S: Lazy 5 2914 ET 600095  
 D: Stitzlein Farms 12545 33840D

3- Tim & Sarah Fleener, PA  
 Fleener 1748 2/12/17 67500D  
 S: Barton 2090 596138  
 D: Fleener 1441 51851D

4- Ty Thorson, WI  
 Metro 1722 2/9/17 67238D  
 S: Rupnow 1115 600795  
 D: Metro 407 49196D

5- Kyle & Jen Fleener, PA  
 FCL 1719 2/2/17 70555D  
 S: Allen Show Lambs IA 2210 G299 ET 601449  
 D: FCL 1315 47263D

6- Callie Taylor, PA  
 Jadewood 2271 2/20/17 71445D  
 S: NSLS 15279 ET 602602  
 D: Flanders VIP 4977 49291D

7- Ty Thorson, WI  
 Metro 1737 2/18/17 67244D  
 S: Rupnow 1115 600795  
 D: Metro 201 37122D

8- Abigail Wilson, NC  
 Lazy 5 2978 2/23/17 69664D  
 S: Lazy 5 2909ET 600100  
 D: Stitzlein Farms R112 46657D

9- Rachel Flanders, IN  
 Flanders VIP 7388 2/3/17 69086D  
 S: Dee Brothers LLC 3212 596228  
 D: Shroyer 4010GR 49227D

10- Morgan Hauger, IN  
 Poe 7070 2/20/17 71339D  
 S: Wheaton 4-112ET "The Full Monty" 598740  
 D: Poe 3395-13 51778D

11- NOC Sheep Center, OK  
 NOC RM-1086-7034 2/3/17 70749D  
 S: Miller O-456 598788  
 D: Northern Oklahoma CN-708-1086 33927D

12- Justin Powell, OH  
 Erwin 1714 2/21/17 68560D  
 S: Slack 5146 603421  
 D: Erwin 1508 56912D

13- Abigail Wilson, NC  
 Lazy 5 2981 2/24/17 69667D  
 S: Lazy 5 2504 AI 596670  
 D: Lazy 5 2720 52470D

14- Korbin Heminger, IN  
 Poe 7334 AI 2/4/17 71340D  
 S: Wheaton 4-112ETRRNN "The Full Monty" 598654  
 D: Poe 4578-14 51795D

15- Korbin Heminger, IN  
 Poe A7275-17 AI 2/15/17 68312D  
 S: Wheaton 4-138ET RRNN "HEF" 598738  
 D: Poe 4504-14 50707D

16- Sidney McAllister, OH  
 Korb 1751 2/22/17 69825D  
 S: Neal 11-22ET "Fatboy" 598740  
 D: Miller P-4610 41735D

17- Skilar Burch, TN  
 Friesen 1760 2/17/17 67791D  
 S: Slack H 5228 601055  
 D: Slack 4269 50243D

18- Sidney McAllister, OH  
 Korb 1761 2/20/17 70587D  
 S: Korb 1621 AI 603421  
 D: Goodwin 14234 50312D

19- WEG & I-80 Flocks/Virginia Gergen, NE  
 WEG G-717 2/10/16 71199D  
 S: Swearingen SS 14-3 602026  
 D: Swearingen SS 2914 21113D

20- NOC Sheep Center, OK  
 NOC CM-8199-7029 2/3/17 70746D  
 S: NOC GM-3136-6088 "Game Over" 601908  
 D: N. Oklahoma T-ONE W113-8199 45867D

## MARCH EWE LAMBS

1- Sidney McAllister, OH  
 Shroyer 1859 Yellow 3/15/17 72025D  
 S: Shroyer 148 555 "Ringo" 596543  
 D: Shroyer 906 YE 39643D

2- Tim & Sarah Fleener, PA  
 Fleener 1779 3/27/17 67504D  
 S: Allen Show Lambs IA 2210 G299 ET 601449  
 D: Fleener 1218 36713D

3- Abigail Wilson, NC  
 Lazy 5 3104 5/1/17 71240D  
 S: Lazy 5 2910ET 33056  
 D: Lazy 5 2920 59097D

4- Jordyn Leininger, IN  
 Slack 7570 3/4/17 71748D  
 S: Slack 4118 "Bottoms Up" 599620  
 D: Slack 5188 68708D

5- Morgan Hauger, IN  
 Poe 7269 3/25/17 71343D  
 S: Wheaton 4-112ETRRNN "The Full Monty" 598654  
 D: Poe 4514-14 51783D

6- Miranda Hunter, DE  
 Poe A7481-17 3/4/17 68316D  
 S: Wheaton 4-112ETRRNN "The Full Monty" 598654  
 D: Poe 3156-13 51775D

7- NOC Sheep Center, OK  
 NOC-QC-5062-7070 3/2/17 70755D  
 S: Northern Oklahoma QC 2087-4087 RR 598512  
 D: NOC GM 230-5062 58893D

8- Morgan Hauger, IN  
 Poe 7242 3/1/17 71342D  
 S: Wheaton 5-018ET RR "Barely Legal" 602026  
 D: Poe 1560-12 37932D

9- Rachel Flanders, IN  
 Flanders VIP 7637 3/8/17 69120D  
 S: Flanders VIP 5220 RRNN 600871  
 D: Flanders VIP 5084 ET 54395D

10- Kyle & Jen Fleener, PA  
 FCL 1733 3/8/17 68542D  
 S: Allen Show Lambs IA 2210 G299 ET 601449  
 D: Mccandish 1301 RRNNI 48361D

11- Korbin Heminger, IN  
 Poe 7255AI 3/10/17 71341D  
 S: Wheaton 4-138ET RRNN "HEF" 598738  
 D: Poe 1532-11 37391D

12- WEG & I-80 Flocks/Virginia Gergen, NE  
 WEG R-715 3/1/17 71200D  
 S: Swearingen SS 14-3 602026  
 D: Willwerth AQ71 34286D

13- Sidney McAllister, OH  
 Carr 1705 3/3/17 68770D  
 S: BWF 105 599536  
 D: Carr 1507 55883D

14- NOC Sheep Center, OK  
 NOC QC-5062-7071 3/2/17 70756D  
 S: Northern Oklahoma QC 2087-4087 RR 598512  
 D: NOC GM 230-5062 58893D

15- Jacen Willinski, WI  
 DDJ-950 3/24/17 68457D  
 S: DDJ-886 598976  
 D: DDJ-782 48153D

16- Abigail Wilson, NC  
 Lazy 5 2998 3/28/17 69555D  
 S: Miller O-611 "Picasso" 588182  
 D: Stitzlein Farms W1629 39770D

17- Korbin Heminger, IN  
 Poe 7195 AI 3/30/17 71344D  
 S: Wheaton 5-018ET RR "Barely Legal" 602026  
 D: Poe 4617-14 ET 68309D

## PAIR OF EWE LAMBS

1- Skilar Burch, TN  
**JUNIOR CHAMPION EWE**  
 Jordyn Leininger, IN  
 Slack 7160 2/1/17 68883D  
 S: Slack 3337 599348  
 D: Slack 3486 47263D

## RESERVE JUNIOR CHAMPION EWE

Rachel Flanders, IN  
 Flanders VIP 7496 1/13/17 69127D  
 S: Flanders VIP 5220 RRNN 600871  
 D: Flanders VIP 6221 61801D



## CHAMPION EWE

Jordyn Leininger, IN  
 Slack 7160 2/1/17 68883D  
 S: Slack 3337 599348  
 D: Slack 3486 47263D



**RESERVE CHAMPION EWE**

Rachel Flanders, IN  
Flanders VIP 7496 1/13/17 69127D  
S: Flanders VIP 5220 RRNN 60087I  
D: Flanders VIP 6221 61801D

**PREMIER EXHIBITOR**

Abigail Wilson, NC



**BEST HEADED EWE**

Heishman Hampshires, VA  
Heishaman 17-20 RRNN 3/10/17 70519D  
S: Herrig 0962 RRNN 597319  
D: Blumenshein 14-20 50544D



**BEST HEADED RAM**

Strawberry Fields Hampshires, RI  
Strawberry Fields 1711 2/2/17 603597  
S: Strawberry Fields 1522 599783  
D: Strawberry Fields 1414 51141D



**GRAND CHAMPION EWE  
CHAMPION FITTED EWE**

Jenna Sullivan, CT  
Sullivan 1615 "Rachael" 2/20/16 62852D  
S: Strawberry Fields 1520 597067  
D: Bobendrier 14-10 NNP RR 48713D



**GRAND CHAMPION RAM  
CHAMPION FITTED RAM**

Tinleigh Spoonster, MO  
Insight Baa Baa Acres 236 1/7/17 602360  
S: Held 15-1647 NNP RR 599084  
D: Baa Baa Acres 119 26193D



**MIXED PAIR - BRED AND OWNED**  
1- Jenna Sullivan, CT



**YOUNG FLOCK**  
1- Strawberry Fields Hampshires, RRI



**RESERVE GRAND  
CHAMPION EWE  
CHAMPION SLICK-SHORN EWE**

Jordyn Leininger, IN  
Slack 7160 2/1/17 68883D  
S: Slack 3337 599348  
D: Slack 3486 47263D



**RESERVE GRAND  
CHAMPION RAM  
CHAMPION SLICK-SHORN RAM**

David and Jim Van Cleave and Family, IL  
VanCleave R-1610 "Freedom" 3/24/16 599116  
S: Miller O-550 588176  
D: Cabaniss 296-08W 53560D



**FLOCK**  
1- Strawberry Fields Hampshires, RI  
2- Jenna Sullivan, CT  
3- Bobendrier Boys, MN

# Featuring Tim & Sarah Fleener

## Introduce yourself & your family

My name is Tim Fleener. My wife, Sarah, and I live in Robesonia, Pennsylvania. We have 2 sons Kyle and Kurt. Kyle, his wife Jen, and son Hudson live near Gettysburg. Kurt and his son, Noah, live in Robesonia. Sarah's parents, Clyde and Dorothy Brubaker, also reside in Robesonia.

## Give us a brief description of your Hampshire Flock

We have approximately 40 Hampshire brood ewes with an emphasis on breed type, structural soundness and productivity. Our concentration is on wether type Hampshires for many reasons.

## Why did you choose to include registered Hampshires in your sheep operation?

Sarah and I met at NAILE where she was showing her Hampshires in the junior show. Her parents, Clyde and Dorothy Brubaker, started their Hampshire flock in 1959. I also had a small flock of Hampshires when we met and the rest is history.

## What advice do you have for people starting out in the sheep business?

Pick the type / kind of Hampshire you want to raise and stick with it. Don't compromise your standards when buying your stud buck. Be patient.

## What are one or two items that you have found to be critical for the success of your sheep operation?

- 1) A good wife
- 2) Proper nutrition
- 3) Keep breed type
- 4) Did I mention... a good wife?

## Who are some people that you credit for your success with Hampshires?

My in-laws - Clyde and Dorothy Brubaker  
Other lifetime friends and Hampshire breeders including Dan & Linda Schlichter

## What is your favorite sports team?

I really don't have a favorite team but inspirational leaders who play or coach. These mentors help develop and inspire other team members and players.

- 1) Coach Mike Kryzewski - Duke University basketball coach
- 2) Peyton Manning - former Quarterback

## What is your favorite food?

Anything sweet.

## What is the top item on your bucket list?

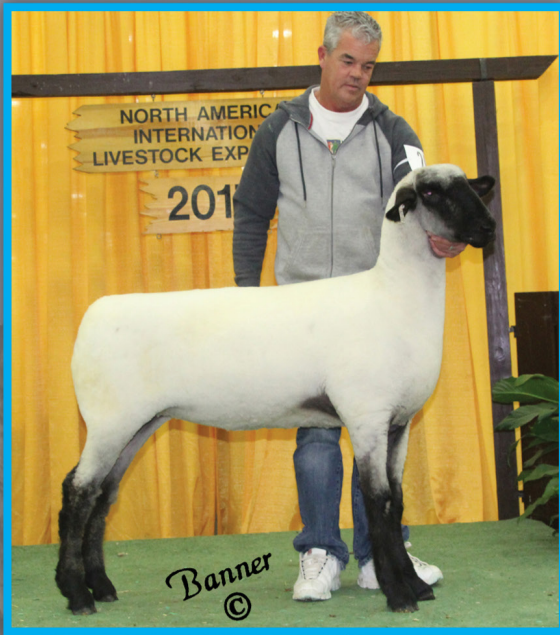
I don't have a bucket list. Every new experience is a blessing.

## What is the favorite place you have visited?

I really don't have a favorite place but Sarah and I do enjoy traveling. We love to visit other sheep breeders and learn about their flocks and life outside raising sheep. Some of our travel occurs while judging various shows as we try and plan our stops along the way. I guess you'd have to say that our favorite place is the annual trip to NAILE where we met.



We will be going to Sedalia in June!



**NELSON**  
*Hampshires*

Rodney & Kathy Nelson

13329 WCR 74 Eaton, CO 80615

R: 970-481-9837 | K: 970-481-0861 | Nelsheep1@what-wire.com

Thanks to Tor, Steve,  
Mindy and crew.

# KLEINERT HAMPSHIRE

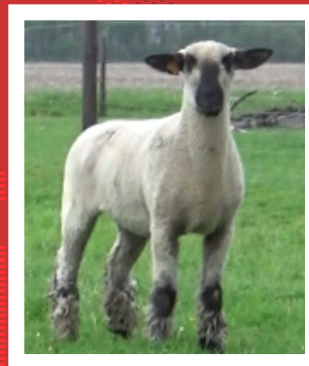
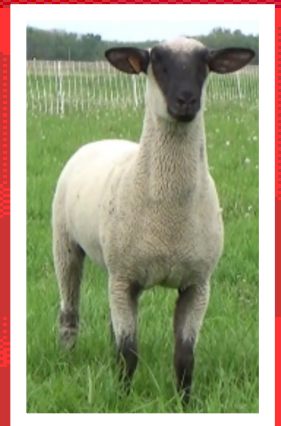
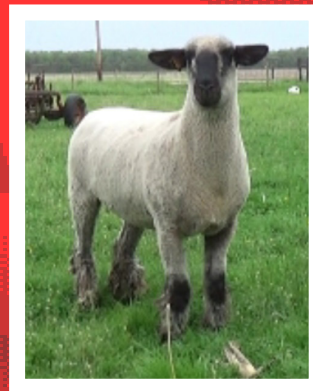
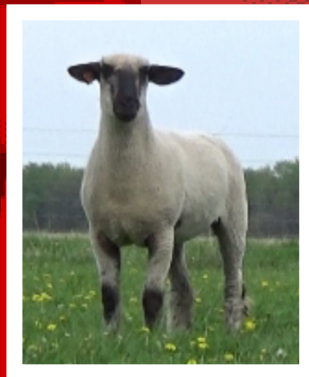
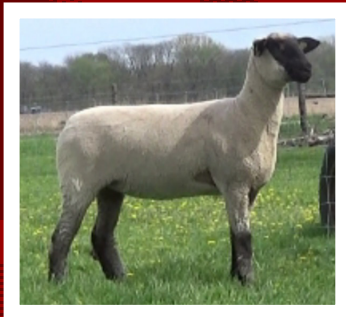
PRODUCTION SALE  
& OPEN SALE  
MAY 5TH, 2018

*"Quality Breeding Lasts Forever"*

SPRING SALE  
& OPEN HOUSE  
APRIL 7TH, 2018



**SOLD IN THE 2017 PRODUCTION AND SPRING SALE!**



MIKE KLEINERT | KLEINERT HAMPSHIRE  
2873 N 1600 EAST RD. | CLIFTON, IL 60297

H: 815.694.2727 | C: 815.383.0962 | KLEINERTHAMPSHIRE@YAHOO.COM | WWW.KLEINERTHAMPSHIRE.COM

# American Hampshire Sheep Association Online Sale Entry Form Hosted by wlivestock.com

## Sale Rules:

- These sales are an online event sponsored by the AHSA. The sales will be hosted by wlivestock.com and will be held on May 1st & June 5th.
- This sale is for both rams and ewes, yearlings and lambs.
- A \$10 per head entry fee for ewes and a \$50 per head entry fee for rams must be included when making your entries. Additionally, 10% of the final selling price will be charged on all animals receiving a bid.
- You must be a 2018 paid member of the American Hampshire Sheep Association to enter animals in these online sale.
- The sale is open to registered Hampshire yearling ewes and rams and registered Hampshire ram and ewe lambs.
- April 20th is the deadline for the May sale and May 25th is the deadline for the June sale.
- An application for registration with appropriate fees or registration certificate must be provided with your entries.
- High quality pictures that show at least a side view and rear view are recommended and these must be provided by entry deadline. Ideally these would be emailed to asregistry@gmail.com.

Consignor \_\_\_\_\_ Phone Number \_\_\_\_\_

Consignor's website \_\_\_\_\_ AHSA Futurity Nominated? \_\_\_\_\_

Flock Tag Number \_\_\_\_\_

Sire \_\_\_\_\_ Dam \_\_\_\_\_

Date of Birth \_\_\_\_\_ DNA \_\_\_\_\_

Location of Sheep \_\_\_\_\_

Starting Price \_\_\_\_\_ Reserve price (if different than starting price) \_\_\_\_\_

Delivery Options \_\_\_\_\_

Comments \_\_\_\_\_

Please send this form along with entry fee and registration application or certificate to the American Hampshire Sheep Association, PO Box 231, Wamego, KS 66547. For more information contact Jeff Ebert at 785-456-8500.

---

## HAMPSHIRE HAPPENINGS

We continue to develop an extensive email list of Hampshire members that receive weekly emails from the AHSA office. These emails are intended to keep the membership updated on items of interest. We do solicit newsworthy articles and information from our Hampshire membership to include in these weekly emails. We may also include the sale and show dates if you are not receiving these emails and would like to please send an email to asregistry@gmail.com.

## REGISTRATION BY MEMBER

Jim Miller-TX-317  
Joe L Cabaniss-OK-166  
Impact Hamps-WI-151  
MacLennan Club lambs-CO-121  
Tom Slack-IN-115  
Johnson Family Show Stock-WI-93  
Ott Club Lambs-OK-85  
Ellerbrock Club Lambs-IL-84  
Pine Lawn Farm-MN-83  
Leland H Wheaton-MI-79  
Travis, Tyler, Alicia, Nelssen-KS-79  
Todd Taylor-WI-76  
Flanders-IN-75  
North Dakota State University-ND-72  
AWTR Club Lambs-SD-71  
Stanley E Poe & Sons-IN-70  
South Dakota State University-SD-67  
Bobendrier Hampshires-MN-61  
NOC Sheep Center-OK-59  
Kleinert Hampshires-IL-58  
Mcneil Hampshires-UT-57  
Lazy 5 Ranch-NC-50  
Derick Miller-TX-49  
Dustin Miller-TX-48

Rule Sheep-IA-47  
Helds Hampshires-SD-46  
Deckerts Hampshires-ND-46  
Sunrise Sheep Company-CA-43  
Bobendrier Boys-MN-42  
Iowa State University-IA-41  
Epperly Hampshires-ND-39  
Sara, Jacee & Justin Johnson-WI-39  
Allison Mcgolden-OK-38  
Farao Club Lambs-CA-38  
Farrow Hampshires-TX-35  
John Allred/Clay Elliott-UT-35  
Englert Hampshires-MT-34  
Hewlett Club Lambs-KS-34  
Travis Bell-ND-34  
Niemeier Hampshires-IL-33  
Tim & Sarah Fleener-PA-33  
Pfliger Farm-ND-32  
Crego Livestock-CO-32  
Herrig Family Hampshires-MN-31  
Mennen Club Lambs-IN-30  
Olsen Family Sheep-UT-30  
Jadewood Valley Hamps-PA-30  
Crazy H Club Lambs-MT-30

## TRANSFER BY MEMBERS

Joe Cabaniss-OK-160  
Jim Miller-TX-143  
Ott Club Lambs-OK-76  
Impact Hamps-WI-75  
Leland Wheaton-MI-66  
Stanley E Poe & Sons-IN-62  
Abby Nightngale-TX-41  
Hands Hampshires-MO-38  
Pine Lawn farms-MN-38  
NOC Sheep Center-OK-36  
Lazy 5 Ranch-NC-36  
Spoonster Hamps-MO-34  
Joel Flanders-IN-33  
Paul Hampshire Sheep Farm-IL-30  
Tom Slack-IN-29  
South Dakota State Unisversity-SD-29  
Epperly Hampshires-ND-28  
University of Wisconsin-WI-28  
Golden Lane Farms-MN-27  
Hancock Hampshires-KY-26  
Nichols Sheep Farm-IL-26  
Wright Rocky Acres-MO-25  
Bobendrier Hampshires-MN-25  
Jadewood Valley Hamps-PA-24  
Walker & Camdyn Tingle-KY-23  
Richard Krackow-WI-22  
Taylor Stock Farm-KY-21  
Kleinert Hampshires-IL-20

## REGISTRATION BY STATE

Oklahoma-695	Minnesota-529	Kentucky-151	Nebraska-109	Montana-99	Maine-17
Texas-674	Pennsylvania-285	Michigan-96	Virginia-55	West Virginia-28	Mississippi-12
Wisconsin-651	North Dakota-284	Wyoming-96	New York-54	Massachusetts-25	Arkansas-10
Illinois-637	Kansas-271	North Carolina-79	Idaho-41	New Jersey-23	Florida-6
Indiana-583	Ohio-245	Oregon-77	New Hampshire-35	Maryland-22	Louisiana-6
South Dakota-543	Missouri-238	Tennessee-60	Delaware-28	Rhode Island-18	Alabama-4
California-376	Colorado-230	Washington-60	Georgia-28	Connecticut-17	
Iowa-285	Utah-202				



## EASTERN REGIONAL HAMPSHIRE SALE

The Eastern Regional Hampshire Sale will be held in conjunction with the Big Ohio Sales on May 10-12, 2018 at the Preble County Fair Grounds in Eaton, Ohio. Banner Sale Management will manage the sale again this year and will be the point of contact for entry information and sale catalogs. Both fitted and wether type Hampshire's will be offered in this sale. Last year's sale was very strong with a top-quality consignment and a good group of active bidders! We hope to see our Hampshire folks in attendance!

## NATIONAL HAMPSHIRE SALE

The national Hampshire sale will again be held in conjunction with The Midwest Stud Ram Sale. The sale will have a schedule similar to past years, and will again be managed by The Heartland Group. Details for the sale are being finalized and will be announced soon, for updated information visit [www.midwestsale.com](http://www.midwestsale.com)

## HOWELL CLUB LAMBS



### 2018 Lambs Sired by:

Franklin (Fuzz Ball) AI Sire  
Rain Maker  
Brister Rainman X Rainman's Mom's  
Twin Sister  
RRNN

Howell Club Lambs

8582 Township Line RD | Celina, OH 45822

PH. 419-953-0238 | [Larryhowell@Bright.net](mailto:Larryhowell@Bright.net)

[www.Howellclublambs.com](http://www.Howellclublambs.com)



# South Dakota State University

Brookings, SD

*"Performance driven Hampshires with style!"*



Our top selling ram at the 2017 NSIP Sale at Spencer IA. Our focus is to produce performance based Hampshire's with EBV data and excel in structural soundness and breed characteristics.

Powerful, moderate framed Hampshires developed at the SDSU Sheep Unit featuring several Wheaton Hampshire stud ram genetics will be available at the following locations in 2018:

- 7th Annual SDSU Hampshire On-line Ewe and Ram Sale - early May
- Center of the Nation NSIP Sheep Sale - Spencer IA
- Private treaty at the SDSU Sheep Unit - Contact Dr. Held

**THANK YOU TO ALL OF THE BUYERS AT  
OUR 2017 SALES AND AT THE UNIT!!!**

For More information:  
Jeff Held, Supervisor cell: 605-690-7033

NSIP EBV's available for all lambs  
Be sure to follow us on  
Facebook for flock updates!

# Futurity Results for 2017

## NAME

CAILY CAHOON, IL  
DYLAN KLUG, WI  
CHRISTIAN TIFFT, IA  
BEAU MUMM, IL  
CAILEY CAHOON, IL  
CHRISTIAN TIFFT, IA  
MIRANDA HUNTER, DE  
LIBBY ENDICOTT, MO  
BRIANNA REAMES, TN  
BEAU MUMM, IL

MIRANDA HUNTER, DE  
CLARK COYLE, KY  
MIRANDA HUNTER, DE  
HANNAH SCHULTZ, WI  
CAMPBELL COYLE, KY  
CORBIN COYLE, KY  
SIDNEY MCALLISTER, OH  
MORGAN HAUGER, IN  
TY THORSON, WI  
MORGAN HAUGER, IN

## FITTED DIVISION

### ANIMAL ID

CAHOON 445  
KLUG HH 17-206T  
TIFFT 367  
HELD 17-1886  
CAHOON 431  
CAHOOD 440  
CARR 1703  
LAMBERT 17-315  
PLAZA HAMPS 1320  
HELD 17-1890

## SLICK SHORN DIVISION

POE 7481  
POE 7028  
POE 7102  
METRO 1732  
POE 7160  
POE 7003  
KORB 1751  
POE 7239  
METRO 1714  
POE 7126

## BREEDER

CAILY CAHOON, IL  
DYLAN KLUG, WI  
CHRISTIAN TIFFT, IA  
HELD'S HAMPSHIRE, SD  
CAILY CAHOON, IL  
CAILY CAHOON, IL  
MITCH CARR, OH  
LAMBERT HAMPSHIRE, MO  
PLAZA HAMPS, MO  
HELD'S HAMPSHIRE, SD

POE HAMPSHIRE, IN  
POE HAMPSHIRE, IN  
POE HAMPSHIRE, IN  
METRO HAMPS, WI  
POE HAMPSHIRE, IN  
POE HAMPSHIRE, IN  
KORB FAMILY FARM, OH  
POE HAMPSHIRE, IN  
TY THORSON, WI  
POE HAMPSHIRE, IN

# **CHAPIN HAMPS**

**Bill & Carole, Derek, Laura & Clive  
Coal City, IL 60416  
(815) 954-5129 chapinhamps@gmail.com**

## **Sound, Honest, Consistent Hampshire Sheep**

**Size, Thickness, Bone & Beauty**

**“Easy Keepers” that will work in  
any flock – especially YOURS!**

**What a year for Fall Ram lambs  
in the Chapin Barn!**

**We plan to offer lambs and yearlings  
at the Spring sale in Bloomington, IL  
and the Annual sale in Eaton, OH**

**Of course, we always have  
“off-the-farm” sales.**

**Come the sales and take one home**

**- or -**

**come to my home and  
take one to yours!**



## **AHSA ONLINE SALE**

The American Hampshire Sheep Association will sponsor two online sales. These sales will be hosted by WLIVESTOCK.COM and will be held on May 1st and June 5th, 2018. Entry forms with rules may be found on the Hampshire website ([www.hampshire.org](http://www.hampshire.org)), as well as in this issue of the Heartbeat. The entry deadline will be no later than ten days before the date of the sale. These sales will offer yearling rams & ewes as well as ram and ewe lambs, for more information please contact the American Hampshire Sheep Association at 785-456-8500.

# New Senior Members

FROM SEPTEMBER 23, 2017  
TO JANUARY 31, 2018

## ILLINOIS

CLEAR VIEW FARMS, JOE VIVIAN

## INDIANA

SPENCER CARSON

## KANSAS

DREIER-LAROSH CLUB LAMBS

## MICHIGAN

CALLIE HIGH

## MINNESOTA

DK LIVESTOCK COMPANY

KAYLEE KATHREINT

DEREK PRATT

## MONTANA

DAVID GRABER

## NEBRASKA

AD RANCH

## NEW JERSEY

GEORGE STILLWELL

## NEW YORK

MAXWELL PETERSON

## OKLAHOMA

SHACOLE THOMPSON

## OREGON

JULIE ENGLUND

## TENNESSEE

TED TURNER

## TEXAS

ROBERT GARCIA

TYLER MALTSBERGER

KEVIN MEEK

## WISCONSIN

BRYCE SHERWIN

## Roselawn Legacy Hampshires

The oldest continuously registered flock in America

100 plus ewes expecting March  
lambs out of these great studs

"Yellow Rose, Chauncey (rear), Toro, Atlas and Storm"

Ewes to lamb in  
March

Yearling rams

Hampshires  
with  
muscle and  
mass

Two yearling studs for sale

50 yearling ewes for sale to choose from

**Burton & Pattie Pfliger**

3600 80th Street SE

Bismarck, ND 58504

701-220-2756

bppfarm@hotmail.com

# Houghtaling Hampshires

We had a great time in Louisville!

Houghtaling 17-729RR, born  
1/20/17, sired by "Klaus"  
Houghtaling 15-575RR

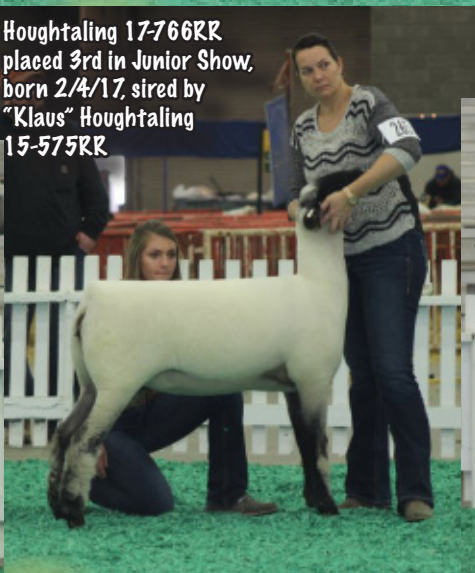


Our February ewes were both born on 2/4/17.  
17-765RR is sired by Caskey1 296RR and 17-766RR  
is sired by "Klaus" Houghtaling 15-575RR



Thanks to Dylan  
Nohner &  
Company, Barret  
& Kristen  
Marshall and  
Wayne & Shelly  
O'Brien for their  
help this past  
year!

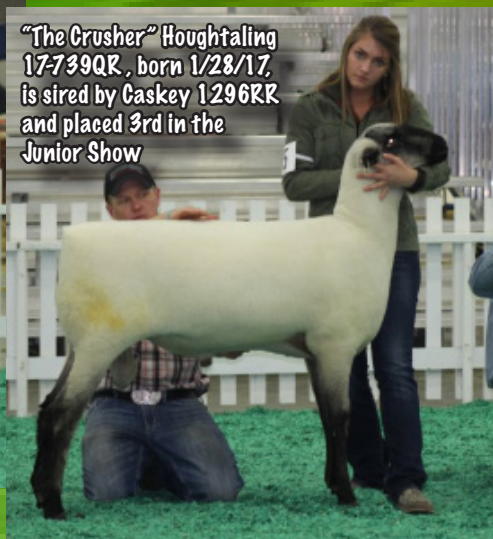
Houghtaling 17-766RR  
placed 3rd in Junior Show,  
born 2/4/17, sired by  
"Klaus" Houghtaling  
15-575RR



1Houghtaling 16-722QR was the first  
place Fall ewe in the Junior Show and  
was 1st place Fall ewe at Keystone,  
born 9/24/16 she is sired by "Fred",  
Marshall 586RR



"The Crusher" Houghtaling  
17-739QR, born 1/28/17,  
is sired by Caskey 1296RR  
and placed 3rd in the  
Junior Show



Jan, Kylene, Kelsey, Faith & Daniella

18522 407 Ave - Doland, SD 57436 - 605.635.6222 - janh@nvc.net

# Highland Hampshires



**\*\*Full Brother to 'Benz' for Sale\*\***  
**Klug HH 16-105 DOB: 9-15-17**



## contemplation

*noun* con·tem·pla·tion \ ˈkän-təm-ˈplā-shən , -ˌtəm-\

: an act of considering with attention

: the act of regarding steadily

: INTENTION, EX-



**2nd Place National Hampshire Futurity Ewe**  
**4th Generation Futurity Participant**

- Klug 'Que' - 4th place 2015
- Mercedes Ladies 'M' - 8th place 2012
- Dohrmann 'Dubuque' - 8th place 2000



**3rd Place 2017 Pot O' Gold Southdown Futurity**

**Gary T. Klug**

939 Hazel Rd. Harlan, IA 51537

(712)202-4461

klughihamp@tm.net



Lynn K. Lee—Flock Emissary

**Dylan R. Klug**

1033 1st Ave. Grafton, WI

dklug2001@gmail.com

# **AHSA FINANCIAL STATEMENT**

## **JANUARY 1, 2017 - DECEMBER 31, 2017**

### **INCOME:**

<b>HAMPSHIRE INCOME:</b>	<b>145,048</b>
<b>OTHER BREED INCOME:</b>	<b>90,495</b>
<b>HAMPSHIRE SALES INCOME:</b>	<b>8,841</b>
<b>INTEREST INCOME:</b>	<b>406</b>
	-----
<b>TOTAL INCOME:</b>	<b>244,790</b>

### **EXPENSE**

<b>OFFICE:</b>	<b>33,928</b>
<b>RENT:</b>	<b>7,680</b>
<b>PAYROLL:</b>	<b>80,322</b>
<b>TRAVEL:</b>	<b>19,676</b>
<b>PROMOTION:</b>	<b>60,334</b>
	-----
<b>TOTAL EXPENSES:</b>	<b>216,550</b>
<b>NET INCOME:</b>	<b>28,240</b>

### **CURRENT ASSETS AS OF DECEMBER 31, 2017**

<b>CHECKING:</b>	<b>112,450.42</b>
<b>CD-1789:</b>	<b>6,172.60</b>
<b>CD-1701:</b>	<b>7,056.35</b>
<b>CD-4227:</b>	<b>10,104.98</b>
	-----
<b>TOTAL ASSETS:</b>	<b>135,784.35</b>

# American Hampshire Sheep Association 128th Annual Meeting November 13, 2017-NAILE ExpoCenter

President, Tom Bobendrier, called the meeting to order at 6:25P.M. Tom introduced the directors that were present including: Scott VanSickle, Lisa Hanson, Phyllis Davison, Debbie Deal, Brent Larson, Katelyn Parsons, and Wayne Belden.

The AHSA past presidents were also introduced, Mike Caskey, Jeff Held, Warren Finder, David Lytle and Richard Krackow were the past presidents in attendance.

Wayne Belden moved and Debbie Deal seconded to approve the 127th Annual meeting minutes as printed. Motion passed. David Lytle moved to approve the financial report as published, Richard VanSickle seconded. Motion passed.

Tom Bobendrier gave the president report mentioning: junior activities, photo contest, promotion of Hampshires and the Hampshires Happenings. Jeff Ebert gave an executive secretary report about the office staff, financial report, and new associations at the registry. Jim Miller was announced as the breeder of the year for 2016.

The futurity results were announced as follows:

## FITTED DIVISION

### NAME

CAILY CAHOON, IL  
DYLAN KLUG, WI  
CHRISTIAN TIFFT, IA  
BEAU MUMM, IL  
CAILEY CAHOON, IL  
CHRISTIAN TIFFT, IA  
MIRANDA HUNTER, DE  
LIBBY ENDICOTT, MO  
BRIANNA REAMES, TN  
BEAU MUMM, IL

### ANIMAL ID

CAHOON 445  
KLUG HH 17-206T  
TIFFT 367  
HELD 17-1886  
CAHOON 431  
CAHOOD 440  
CARR 1703  
LAMBERT 17-315  
PLAZA HAMPS 1320  
HELD 17-1890

### BREEDER

CAILY CAHOON, IL  
DYLAN KLUG, WI  
CHRISTIAN TIFFT, IA  
HELD'S HAMPSHIRE, SD  
CAILY CAHOON, IL  
CAILY CAHOON, IL  
MITCH CARR, OH  
LAMBERT HAMPSHIRE, MO  
PLAZA HAMPS, MO  
HELD'S HAMPSHIRE, SD

## SLICK SHORN DIVISION

MIRANDA HUNTER, DE  
CLARK COYLE, KY  
MIRANDA HUNTER, DE  
HANNAH SCHULTZ, WI  
CAMPBELL COYLE, KY  
CORBIN COYLE, KY  
SIDNEY MCALLISTER, OH  
MORGAN HAUGER, IN  
TY THORSON, WI  
MORGAN HAUGER, IN

POE 7481  
POE 7028  
POE 7102  
METRO 1732  
POE 7160  
POE 7003  
KORB 1751  
POE 7239  
METRO 1714  
POE 7126

POE HAMPSHIRE, IN  
POE HAMPSHIRE, IN  
POE HAMPSHIRE, IN  
METRO HAMPS, WI  
POE HAMPSHIRE, IN  
POE HAMPSHIRE, IN  
KORB FAMILY FARM, OH  
POE HAMPSHIRE, IN  
TY THORSON, WI  
POE HAMPSHIRE, IN

The 2017 scholarship recipients were announced: Courtney King, Megan Coan, Abilene Gaston, Jenna Sullivan, Kaylee Brunner, and Lindsay Shell were selected to receive \$500 scholarships from the AHSA.

Poe Hampshires was honored with a 70 year Hampshire Heritage award.

Director election results were announced with Jason Simpson elected for District 2, Debbie Deal elected for District 6, and Jason Mumm as an at large director.

The back page ad of the Heartbeat was sold to Shear We Go Farm for \$1,600.

Debbie Deal moved to adjourn, Kyle Thayer seconded. Meeting adjourned.

Submitted by,  
Jeff Ebert



CONTACT US TODAY TO BOOK YOUR NEXT!  
SALEBOOKINGS@WLIVESTOCK.COM  
317-983-6572 Ext. 1003

**WILLOUGHBY**  
 **SALES**

# NUGGET

ALL AMERICAN SHOW & SALE  
MAY 31-JUNE 2 | RENO, NV

JUDGE WETHER SIRES AND DAMS: *Mark Hoge*  
JUDGE BREEDING SHEEP: *Rich Jacobsen*

**ENTRIES DUE MAY 1ST**

**THURSDAY, MAY 31, 2018**  
SHOW...9:00 AM

**FRIDAY, JUNE 1, 2018**  
SHOW...10:00 AM

**FRIDAY, JUNE 1, 2018**  
CS&HSBA SHOWMANSHIP  
COMPETITION...3:00 PM

**FRIDAY JUNE 1, 2018**  
SUPREME DRIVE ...4:00 PM

**SATURDAY JUNE 2, 2018**  
NUGGET ALL AMERICAN  
SALE...10:00 AM  
\*\*CELEBRITY BALL ROOM\*\*

FOR MORE INFORMATION VISIT  
[WWW.WLIVESTOCK.COM](http://WWW.WLIVESTOCK.COM)

**MORE LIVE  
SHOWS & SALES:**

MARCH 30-31 :: INDIANAPOLIS, IN  
ENTRY DEADLINE: MARCH 1ST

**PREMIER 10 Midwest Elite**  
*SHOW & SALE*  
**Premier Goat**  
*SHOW & SALE*

APRIL 27-28 :: CHICKASHA, OK  
ENTRY DEADLINE: APRIL 1ST

OKLAHOMA  
*Corporation*  
SALE **OKLAHOMA**  
BLACK & WHITE SHOW & SALE

**NEW** OKLAHOMA  
CORPORATION  
GOAT SHOW & SALE

MAY 4-5 :: DANVILLE, IN  
ENTRY DEADLINE: APRIL 1ST

REGIONAL  
**SOUTHDOWN**  
*Show & Sale*

THE **Midwest Elite**  
SHROPSHIRE  
*show and sale*

**Midwest Elite**  
SLICKSHORN  
*show and sale*

# #HavingARecordYear



## 2017 National Champion Ram

### "INSIGHT" BAA BAA ACRES 236

Sire: Held 15-1647  
MGS: Cahoon 134

2017 All-American Jr. Show  
Champion Ram  
2017 NAILE Jr. Hampshire Show  
Champion Ram



### "LIGHT IT UP" SPOONSTER HAMPS 17-19 ET RR

Sire: PowerBuilt • Dam: Bonnie (2013 Natl. Champion Ewe)  
2017 NAILE Junior Champion Fitted Ewe, Jr. and Open Show  
1st Place Fitted Feb. Ewe Lamb, Jr. and Open Show  
1st Place Pair of Ewe Lambs, Open Show (Paired with 17-30)  
1st Place Pair of Hampshires, Jr. Show (Paired with Insight)



### WATCH FOR OUR ENTRY IN THE 2018 HEART OF A CHAMPION ONLINE SALE!

A sincere Thank You to Rod and Terry Anderson, Brad Payne and Jonah Lasater for helping to make 2017 a record year!

- Bobby, Jessica, Tinleigh,  
Charleigh, Trey, Paisleigh and Tate

### SPOONSTER HAMPS 17-30

Sire: Held 17-41 Churchbells • Dam: Steffens 389  
2017 NAILE 2nd Place March Ewe Lamb, Jr. and Open Show



Spoonster Hamps / The Spoonster Family / Eolia, MO / PH: 636.359.5487  
[WWW.SPOONSTERHAMPSHIRE.COM](http://WWW.SPOONSTERHAMPSHIRE.COM)

# OUR GEARS ARE ALWAYS TURNING!



## BAA BAA ACRES 262 "ABRACADABRA"

1ST PLACE MARCH RAM LAMB / 2017 NAILE  
Sire: BBA 226 RRoss • MGS: Char-Land 12-07 Tonto

Thank you to Double Bar D Hampshires of Ohio for your purchase of Abracadabra!

We are not afraid to say, along with Insight, Abracadabra is one of the best stud ram prospects ever produced at BBA.



## BAA BAA ACRES 238

4TH JANUARY RAM LAMB / 2017 NAILE  
Sire: Held 15-1647 • MGS: BBA Strategy

Thank you to Timber Lake Hampshires of MN, for your purchase of BBA 238 in the spring of 2017.

We enjoyed seeing our customers exhibit our genetics on the green chips!

**THANK YOU  
PURPLE INCORPORATED  
FOR MAKING THIS YEAR HAPPEN!**



## BAA BAA ACRES 229 "SWEET BABY RAE"

3RD LATE YEARLING EWE / 2017 NAILE  
Sire: Held 15-1647 • MGS: Plaza Bailout



## BAA BAA ACRES 221 "JUNE"

2ND INT. YEARLING EWE / 2017 NAILE  
Sire: BBA 205 • MGS: Char-Land 12-07 Tonto

Baa Baa Acres and friends are proud to announce the "HEART OF A CHAMPION" Elite Ewe Lamb Sale, Vol. 2 on April 26, 2018. Don't miss this ONLINE sale hosted by WLVIVESTOCK.COM.



**BAA BAA**  
*acres*

ROD AND TERRY ANDERSON • JUNEAU, WI • PH : 920.386.2540  
SKIP AND KELLI ANDERSON • FARGO, ND • PH: 701.205.9764

# State Hampshire Associations

## OHIO HAMPSHIRE SHEEP ASSOCIATION OFFICERS

**President:** Dan Shell  
1901 Doak Road  
Midland, Ohio 45148  
Phone: 937 302-8367  
Email: Shellshampshires@hotmail.com

**Secretary/Treasurer:** Marla Shell  
1901 Doak Road  
Midland, Ohio 45148  
Phone: 614 496-8575  
Email: mdshell319@hotmail.com

**Vice-President:** Frank Sexten  
3420 State Route 380  
Xenia, Ohio 45385-9735  
Phone: 937 371-1392  
Email: fsexten@gmail.com

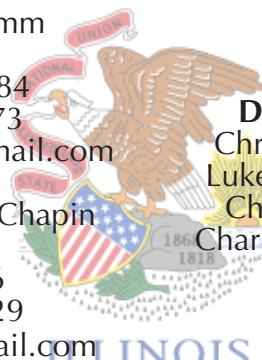
**Board of Directors:**  
Denise Deal  
Frank Sexten

This information was provided by state Hampshire associations. We encourage all of our state Hampshire associations to submit information on their activities for each issue of the Hampshire Heartbeat.

## ILLINOIS HAMPSHIRE SHEEP ASSOCIATION OFFICERS

**President:** Megan Mumm  
49 CR 1300 N  
White Heath, IL 61884  
Phone: 217-377-2073  
Email: meganmumm@hotmail.com

**Secretary/Treasurer:** Bill Chapin  
5680 E Reed Rd  
Coal City, IL 60416  
Phone: 815-954-5129  
Email: chapinhamps@gmail.com



**Directors:**  
Chris Cahoon  
Luke Benjamin  
Chris Meyer  
Charlotte Toohill

## New England Hampshire Sheep Association Officers

**President:** Kyle Thayer  
**Vice President:** Darlene Leary  
**Treasurer:** Tina Fisk Colt  
**Secretary:** Sue Searle

## MINNESOTA HAMPSHIRE SHEEP ASSOCIATION OFFICERS

**President:** Rod Scheller  
3646 County Rd 37  
Monticello, MN 56362  
Email: rodscheller@gmail.com

**Vice-President:** Bruce Bakken  
29557 State Hwy 13  
Hartland, MN 56042  
Email: bjbakken54@gmail.com

**Secretary/Treasurer:** Art Frame  
16465 Paul Ave.  
Worthington, MN 56187  
Email: aframe@nobleswildblue.com

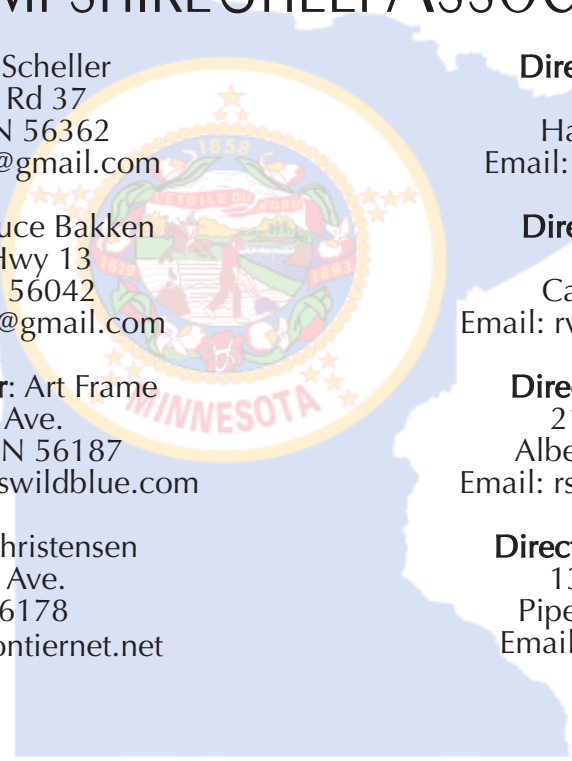
**Director:** Mark Christensen  
1561 250th Ave.  
Tyler, MN 56178  
Email: mcchris@frontiernet.net

**Director:** Gary T. Klug  
Box 383  
Harlan, IA 515372  
Email: klughihamp@tm.net

**Director:** Reid Merrill  
2163 250 St  
Canby, MN 56220  
Email: rvmerrill50@gmail.com

**Director:** Todd Schmidt  
21407 775th Ave  
Albert Lea, MN 56007  
Email: rschmidt76@gmail.com

**Director:** Tom Bobendrier  
1351 US Hwy 75  
Pipestone, MN 56164  
Email: shebob@svtv.com



## SOUTH DAKOTA HAMPSHIRE SHEEP ASSOCIATION OFFICERS

**President:** Brent Larson  
20205 477th Ave  
White, SD 57576  
Phone: 605-633-1561  
Email: larson76@gmail.com

**Vice President:** David Juntunen  
43950 187th Ave  
Vienna, SD 57271  
Phone: 605-628-2949  
Email: jute@itctel.com

**Secretary:** Kristin Marshall  
45491 204th ST  
Arlington, SD 57212  
Phone: 605-770-0132  
Email: marshallke83@outlook.com

## INDIANA HAMPSHIRE SHEEP ASSOCIATION OFFICERS

**President:** Dan Myers  
833 E CR 350 S  
Logansport, Indiana 46947  
Phone: 574-355-6840  
Email: indianahamps@gmail.com

**Secretary/Treasurer:** Kris Myers  
833 E CR 350 S  
Logansport, Indiana 46947  
Phone: 574-355-6840  
Email: indianahamps@gmail.com

## PENNSYLVANIA HAMPSHIRE SHEEP ASSOCIATION OFFICERS

**President/Secretary:** Mindy Holtry  
717-776-4192

The main focus of the PHSa is to support junior Hampshire exhibitors at the Keystone International.

---

# HAMPSHIRE FUTURITY

The Hampshire Futurity Program is undergoing some changes and improvements. Please look for the revised rules on the Hampshire website ([www.hampshire.org](http://www.hampshire.org)) in early March 2018. The American Hampshire Board of Directors continues to look at the Futurity Program, seeking ways to make changes and improvements. We would like to encourage our youth members to consider buying Futurity nominated ewe lambs at the various public and private sales. Ewe lambs may also be purchased from private breeders as long as they submit a nomination form and pay the 25.00\$/head nomination fee.

For any questions on how the Futurity program works please contact your director or the American Hampshire Sheep Association office. \$4,000.00 was paid to Junior Hampshire Members in 2017!

## FINDER

Hampshires,  
Katahdins &  
Maremma Livestock  
Guardian Dogs

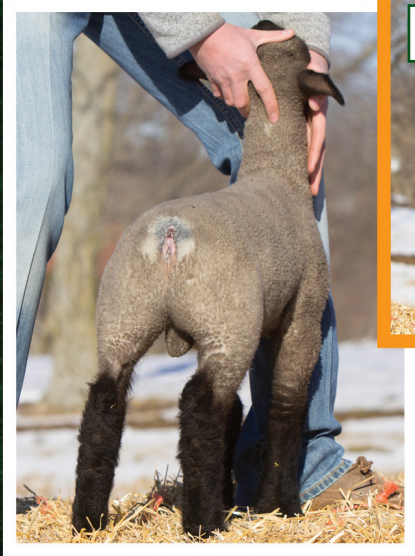


## WARREN & PAM FINDER

Warren for sheep: (620) 532-1327 14715 W. Maple Grove Rd.  
Pam for dogs: (620) 491-1087 Kingman, KS 67068  
[finderhampshires@gmail.com](mailto:finderhampshires@gmail.com) [facebook.com/FinderHampshires](https://www.facebook.com/FinderHampshires)

Online Sales March 12 & May 6th  
@ Willoughby Sales  
Show Lambs & Breeding Stock Available  
Private Treaty This Spring

# THE FEDS



**FEDERAL X  
NEW AGE**



**FEDERAL X  
FULL MONTY**



**FEDERAL X  
NEW AGE**



**FEDERAL X  
4D LARGE**



**FEDERAL X  
4D LARGE**



# ARE HERE !!

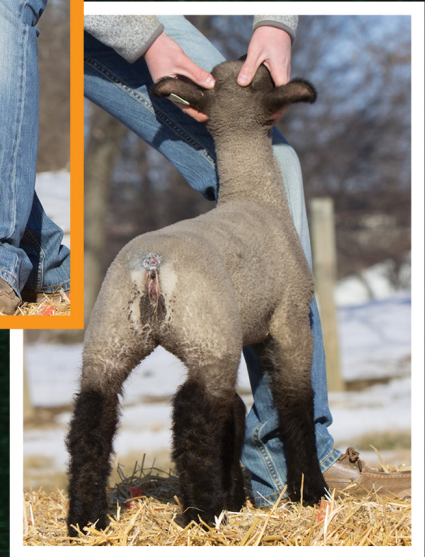
**FEDERAL X  
MILLER 63**



**FEDERAL X  
A-COPY**



**FEDERAL X  
MILLER 63**



**FEDERAL X  
CENTERFOLD**



**Double F Club Lambs** Endre, Betsy, Stefan & Allison Fink  
1590 Boonesboro RD Winchester KY 40391  
**Stefan** 859-771-8441 | **Endre** 859-559-7765  
[doubleflamb@gmail.com](mailto:doubleflamb@gmail.com) | [www.doublefclublambs.com](http://www.doublefclublambs.com)



# HERRIG HAMPSHIRE

*Genetics that not only work for us they work for others*



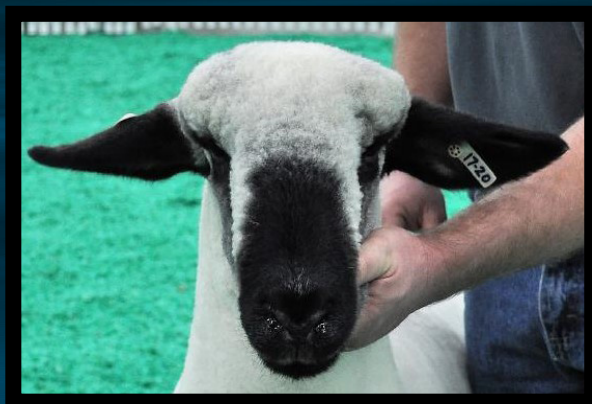
Congrats to Jenna Sullivan on her National Champion Ewe sired by Strawberry Field 1520 "White Smoke"



Congrats to Ethan Kennedy on his Reserve Jr Champion ewe at Naile Jr Show Dammed by Herrig 1081



Congrats to Shell Hampshires on their Reserve Champion Ram at Naile Jr show Dammed by Herrig 0904



Congrats to Adam Heishman on his Best Headed ewe at the National Show sired by Herrig 0962

## SALES - NEW THIS YEAR

Herrig March Madness Sale: **Sale Sheep will be for sale Private treaty off the Farm for the Month of March First Come first Serve.**

Herrig 4th Annual Online Sale: **April 24th [www.wliverstock.com](http://www.wliverstock.com)**

Ohio Showcase sale: **Eaton OH in May**

National Sale Sedalia **MO in June**

## SIRES USED

Herrig 867 Turbo

Caskey 5535

Strawberry Fields 1520 "White Smoke"

Spoonster 17-10

DAVID AND JAKE HERRIG

DAVE: 507-220-1360 | JAKE: 507-227-4228

677 STATE HIGHWAY 267 | SLAYTON, MN 56172

JAKEHERRIG@YAHOO.COM | WWW.HERRIGSHEEP.COM



# Wether Show Results 2017

## HAMPSHIRE WEIGHTS 100-128

CACHE WRYE, ESTANCIA, NM  
KYRA ELLIOTT, CALUMET, OK  
MASON HARRIS, PERRY, OK  
ASHTON GASKINS, CENTERVILLE, TX  
NEVAEH POWERS, FAYETTE, OH  
MACKENZIE CASTRO, NAPOLEONVILLE, LA  
ABBEY CURRIE, CLEVELAND, TX  
KOLE JUSTIN, RICHWOOD, OH  
SARAH YOUNG, LEESBURG, OH  
HOUSTON SCOTT, WAURIKA, OK

## HAMPSHIRE WEIGHTS 129-139

JILLIAN KELLER, PIQUA, KS  
GABBY RAUTE, CARMEL, IN  
KAILEN URBAN, GOTEBO, OK  
HADIE TESTERMAN, HOLLIS, OK  
BRANTLEE COX, GLENCOE, OK  
ABBY LAW, STRATFORD TX  
IAN JOHNSON, MARYSVILLE, OH  
CARMEN PICKETT, BOSSIER CITY, LA

## HAMPSHIRE WEIGHTS 140-145

ALEX RAUTE, CARMEL, IN  
SARA JOHNSON, DELAVAN, WI  
KENDAL ROSEN, URBANA, IN  
AUBRI WRYE, ESTANCIA, NM  
LOGAN JACKSON, OLDEN, TX  
WYATT NIXON, DELAVAN, WI  
KATELYN COWDREY, RUSSELLVILLE, OH  
COLE COOPER, ELMWOOD, NE  
CALEY MAYO, WHITACKERS, NC  
CALEY MAYO, WHITACKERS, NC

## HAMPSHIRE WEIGHTS 146-150

NEAL EHLE, FAIRBURY, NE  
LOGAN JACKSON, OLDEN, TX  
ZACHARY HOWELL, COLUMBUS, IA  
BAILEE AMSTUTZ, RICHWOOD, OH  
KASSANDRA PALZKILL, MINERAL POINT, WI  
JERRY WAYNE BATES III, LEAKEY, TX  
ELLIE SENNETT, WAYNETOWN, IN  
ZACH McCANN, EXPORT, PA  
LEXI HARRISON, LOUISVILLE, IL  
CARLY CASTELLO, TRACY, CA

## HAMPSHIRE WEIGHTS 151-157

COLIN GUMP, KIRKVILLE, IA  
PAYTON HARRIS, PERRY, OK  
COLLIN TENNANT, NORTH, IN  
ALEX RAUTE, CARMEL, IN  
EMILY SMITH, ELK CITY, OK  
DANIEL GOODWIN, PONCA, OK  
STETSON WISS, LAMAR, MO  
MADELYN SCOTT, LAWTON, OK  
CHANGE MALONE, MORNING SUN, LA  
SAWYER MORRICAL, CLARION, IA

## HAMPSHIRE WEIGHTS 158-164

LAUREN OTT, NORWALK, OH  
LANE SLATON, NOBLESVILLE, IN  
ALEX RAUTE, CARMEL, IN  
TOREE FRAZE, COMANCHE, TX  
SARAH BAYNE, BAKERSFIELD, CA  
ADRIANA WENDLAND, LONSDALE, MN  
LOGAN JACKSON, OLDEN, TX  
HAYDEN, DEMNIAK, CARMICHAELS, PA  
HAILEY STOTTLEMYRE, LUTHER, OK  
SIERRA WASHMON, FARGO, OK

## HAMPSHIRE WEIGHTS 165-188

HADIE TESTERMAN, HOLLIS, OK  
DAVID VETTER, BENNETT, OK  
BAILEE AMSTUTZ, RICHWOOD, OH  
SOPHIE ROSEN, URBANA, IN  
HALLE HINDMAN, ALBIA, IA  
MORGAN EVANS, RICHWOOD, OH  
REAGAN THURMAN, BRYAN, TX  
COLLIN TENNANT, NORTH, IN  
BROOKE BOWEN, LYNN, IN  
SYDNEY CHERNEY, WONEWOC, WI

**CHAMPION HAMPSHIRE**  
ALEX RAUTE, CARMEL, IN

**RESERVE CHAMPION HAMPSHIRE**  
NEAL EHLE, FAIRBURY, NE



# 2017 AHSA Scholarship Winners



Lindsay Shell – Midland, Ohio

Parents: Dan and Marla Shell

Freshman at Capitol University

Has raised and shown Hampshires for 7 years.

Ohio and Regional sheep production proficiency award winner.

Exhibited Hampshires at Ohio, Indiana, and Kentucky state fairs, NAILE, and All American Junior Show.

Member of National Honor Society

Courtney King – Chico, California

Parents: Arnold and Dina King

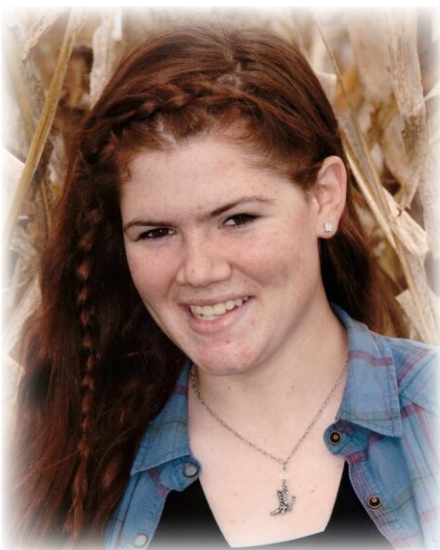
Freshman at California State University-Chico

Raised and shown Hampshires for 13 years

Hampshire flock consist of 50 ewes in partnership with her sister.

Has participated in local and state shows

Was named Trojan of the month in February 2017, at her High School.



Abilene Gaston – Vandalia, Missouri

Parents: Adam and Julie Gaston

Senior at University of Missouri – Columbia

Has raised and shown Hampshires her entire life

American FFA degree recipient

Exhibited Hampshires at Missouri state fair,

NAILE, and All American Junior Show

Sheep Chairman for Mizzou Block and Bridle Club.

# 2017 AHSA Scholarship Winners



Megan Coan – Platte Center, Nebraska  
Parents: Kevin and Robin Coan  
Sophomore at University of Nebraska – Lincoln  
Has raised and shown Hampshires for 13 years  
American FFA degree recipient  
Exhibited Hampshires locally and at Nebraska State Fair  
Academic honor roll with high distinction

Kaylee Brunker – Stillwater, Oklahoma  
Parents: Brandon and Regina Brunker  
Sophomore at Oklahoma State University  
Won the National Sheep Production Entrepreneur Proficiency Award.  
Hampshire flock consist of 22 ewes  
Raised and shown Hampshires for 10 years  
Has participated in local, state, and national shows



Jenna Sullivan – Moodus, Connecticut  
Parents: Roger and Lara Sullivan  
Freshman at DeSales University  
Raised and shown Hampshires for 10 years  
Hampshire flock consist of 20 ewes  
Exhibited Hampshires at the Big E, NAILE, and All American Junior Show.  
President of the Youth Helping Youth Club in High School.

# EBERT SHEEP FARM

Thank you to all of our buyers in 2017!



'King Tut'  
We bred 45 ewes to him this Fall and are looking forward to another great set of lambs out of him in 2018!

Jeff, Kerri, Christine & Monica Ebert

10015 Flush Road - St. George, KS 66535

(785) 458-9174 - ebertsheepfarm@gmail.com - www.ebertsheepfarm.com

## OVEN COOKED LAMB KEBABS

1 pound (480 g) lamb leg steaks, boneless, fat trimmed, cut into small pieces | 2 tablespoon vegetable oil | freshly squeezed juice from 1 lemon  
2 tablespoons fresh mint leaves, chopped | 1 tablespoon ground coriander | 2 garlic cloves, peeled and crushed | 1 red onion, peeled and cut into wedges  
3 tablespoons olive oil | French bread, sliced (8 slices) | salt and freshly ground black pepper to taste | fresh mint leaves to garnish

**STEP ONE:** In a mixing bowl combine together lamb, vegetable oil, lemon juice, chopped mint, coriander, half of crushed garlic and seasoning. Mix well. Cover and refrigerate for 30 minutes.

**STEP TWO:** Tread the marinated meat alternated with the onion wedges on to 4 metal skewers. Brush with remaining marinade. Place the low grill rack in the turbo oven. Put a shallow round baking tray on the rack.

**STEP THREE:** Preheat turbo oven to 392°F (200°C) Arrange the kebabs on the high grill rack and cook for 10-15 minutes, turning once after 3-5 minutes. Transfer oven cooked lamb kebabs to the round baking tray on the low grill rack.



## SPECIAL THANKS TO THE FOLLOWING INDIVIDUAL AND BUSINESSES:

- Heiniger for donating the two sets of shears to the AJHSA.

- Thanks to the following people who donated items to the AJHSA silent auction and those who purchased the items:

### Donors:

- Chris Van Auken
- Wrights Rocky Acres
- Debbie & Denise Deal
- Lisa Hanson
- Deb Pullin - Van Auken
- Phyllis Davison

### Buyers:

- Tom Foster
- Cynthia Huckins
- Donna McGaughey
- Mary Held
- Beverly boersma
- Keith Kroenlein
- Kalen Poe

- Thanks to Ron & Mary Esther Pullin for donating three vintage cloth Hampshire calendars. These were purchased by: Metro Hamps, Poe Hamps, Lynn K. Lee

- Thanks to Shear We Go Farm, The Sullivans, for purchasing the back-page ad of the Hampshire Heartbeat for 2018

- Thanks also to Scott Van Sickle for serving as auctioneer for the Stars of Louisville Sale, and the AJHSA Auction during the annual meeting.

# JUNIOR BOARD MEMBERS



**PRESIDENT --- DANIELLE HOUGHTALING — DOLAND, SD**  
**PARENTS: JAN & KYLENE HOUGHTALING**  
**PRESIDENT OF DOLAND FFA**  
**ACTIVE IN VOLLEYBALL AND TRACK AT HER HIGH SCHOOL**  
**EXHIBITS HAMPSHIRE AT LOCAL, STATE, AND NATIONAL SHOWS**

**VICE PRESIDENT --- JENNA SULLIVAN -MOODUS, CT**  
**PARENTS: ROGER AND LARA SULLIVAN**  
**PRESIDENT OF YOUTH HELPING YOUTH CLUB**  
**EXHIBITS HAMPSHIRE AT LOCAL, STATE, AND NATIONAL SHOWS**  
**MEMBER OF FFA AND FBLA WHILE IN HIGH SCHOOL**



**SECRETARY-TREASURER --- AMANDA KING — PETALUMA, CA**  
**PARENTS: ARNOLD & DINA KING**  
**VICE PRESIDENT OF PETALUMA FFA CHAPTER**  
**EXHIBITS HAMPSHIRE AT LOCAL AND STATE SHOWS, ON THE WEST COAST**  
**VICE PRESIDENT OF LIBERTY 4H CLUB**



## BOARD MEMBERS

**CAMPBELL COYLE — DANVILLE, KY**  
**PARENTS: DOUG & BETH COYLE**  
**A COMPETITIVE SWIMMER**  
**EXHIBITS HAMPSHIRE AT LOCAL, STATE, AND NATIONAL SHOWS**  
**SERVED AS VICE PRESIDENT OF HIS JUNIOR HIGH SCHOOL FFA CHAPTER**



**MORGAN HAUGER — CONNERSVILLE, IN**  
**PARENTS: JASON & LISA HAUGER**  
**PRESIDENT OF HER 4H CLUB**  
**MEMBER OF THE MID WEST JUNIOR PREVIEW SHOW BOARD OF DIRECTORS**  
**EXHIBITS HAMPSHIRE AT LOCAL, STATE, AND NATIONAL SHOWS**



**FAITH HOUGHTLING — DOLAND, SD**  
**PARENTS: JAN & KYLENE HOUGHTALING**  
**PRESIDENT OF DONALD HIGH SCHOOL STUDENT COUNCIL WHILE IN HIGH SCHOOL**  
**DISTRICT 1 FFA SECRETARY IN SOUTH DAKOTA**  
**EXHIBITS HAMPSHIRE IN LOCAL, STATE, AND NATIONAL SHOWS**



**ZACHARY LYMAN — DRACUT, MA**  
**PARENTS: JACK & ROBIN LYMAN**  
**PRESIDENT OF HIS 4H CLUB**  
**EXHIBITS HAMPSHIRE AT LOCAL & STATE SHOWS IN THE NORTH EAST.**  
**- STARTED HIS HAMPSHIRE FLOCK ON HIS GRANDFATHERS FARM.**



**KYLAN RISACHER — WRIGHT, MN**  
**PARENTS: STEVE & KELLY RISACHER**  
**PRESIDENT OF PEER HELPERS IN HIGH SCHOOL**  
**CAPTAIN OF BASKETBALL & SOFTBALL TEAMS WHILE IN HIGH SCHOOL**  
**GREW UP ON A BEEF FARM, BECAME INTERESTED IN SHEEP AFTER HELPING**  
**A NEIGHBOR WITH HERS.**



## AJHSA Junior Member Monday Application

Name \_\_\_\_\_ Age \_\_\_\_\_

City \_\_\_\_\_ State \_\_\_\_\_

Please answer the following questions to the best of your ability.

1. Please describe your current Hampshire operation.
2. When and how did you become interested in the Hampshire breed?
3. What are your future plans in the Hampshire Sheep industry?
4. What has been the most rewarding experience and/or greatest accomplishment you have had with raising sheep?

**Please submit your completed application to: [danielleh12301@gmail.com](mailto:danielleh12301@gmail.com)**

If you have any questions or concerns, please e-mail Jeff Ebert at [asregistry@gmail.com](mailto:asregistry@gmail.com) or Danielle Houghtaling at the e-mail above. Make sure to like us on Facebook!

---

## MIDWEST JUNIOR PREVIEW SHOW

The Midwest Junior Preview Show will be held on Saturday, June 2nd, 2018 at the Missouri State Fairgrounds in Sedalia, Missouri. This all breed sheep show has grown to one of the top junior shows in the United States. If you have not attended in the past, make plans to attend in 2018! For more information look them up online at [www.midwestjuniorpreviewshow.com](http://www.midwestjuniorpreviewshow.com) or call Kate Lambert at 660-541-0468.

# American Hampshire Sheep Association

## Application for Summer Internship

The below application is for individuals who are interested in applying to work as a summer intern for the American Hampshire Sheep Association. The approximate start date would be May 15<sup>th</sup> and approximate ending date would be August 1st. This is a paid internship and some travel might be required. Ideally, the successful applicant will work for 10-12 weeks and help with seasonal registry work and other duties of the AHSA office. Applications will be accepted until March 15, 2018. Phone interviews will be conducted prior to April 1<sup>st</sup> and the job offer will be made soon thereafter. The job location is at the AHSA office in Wamego, Kansas. Application and current resume can be emailed to [asregistry@gmail.com](mailto:asregistry@gmail.com) or mailed to AHSA, PO Box 231, Wamego, KS 66547. If you have questions call Jeff Ebert at 785-456-8500.

Name: \_\_\_\_\_ Phone: \_\_\_\_\_

Address: \_\_\_\_\_

Email Address: \_\_\_\_\_ Year in School: \_\_\_\_\_

Give a brief background on your agriculture experiences, including with sheep and then specifically with Hampshires?

Why do you want to work as a summer intern for the American Hampshire Sheep Association?

What experiences do you hope to gain by serving the AHSA as a summer intern?

Do you have any extra talents that would assist the AHSA office (For example, livestock photography or design and layout of brochures?)

Would you be available to travel to shows and sales if needed by the AHSA secretary?

Do you have any potential summer conflicts during June or July, 2018?

What could be your earliest start date and latest end date if you were offered this position?

Please use additional pages as necessary.

---

## ALL AMERICAN JUNIOR SHOW

The 25th annual All American Junior Show will be held at the Indiana State Fairgrounds, in Indianapolis, Indiana on July 5-8, 2018. The AAJS will return to Indiana (which was the site for the first few shows) in 2018! Plans are well underway for the 2018 AAJS, please refer to the website ([www.allamericanjuniorshow.com](http://www.allamericanjuniorshow.com)) for updates & entry blanks. Entrees are due no later than May 25th, 2018. Last year's show in Wisconsin had around 2,000 head of sheep shown! Make plans now to attend one of the greatest junior sheep shows!



# VAN CLEAVE HAMPS



## 2017 NATIONAL HAMPSHIRE SHOW

First place shorn yearling ram, Champion Shorn Ram  
and Reserve Champion Overall Ram

VAN CLEAVE HAMPS | SENECA, ILLINOIS  
JIM 815-357-8196 | DAVID 815-482-7484

# North American International Livestock Exposition Junior Hampshire Show Results

Louisville, KY - November 11, 2017

Junior Show Judge: Travis Hoffman, ND

## -FITTED DIVISION-

### SENIOR RAM LAMBS

1- Jesse Zirkle, VA  
Gochenour 0216 2/6/16 600847

### JANUARY RAM LAMBS

1- Tinleigh Spoonster, MO  
Insight Baa Baa Acres 236 1/28/17 602360  
2- Bobendrier Boys, MN  
Bobendrier Boys 17-18 1/14/17 603508  
3- Danielle Houghtaling, SD  
Houghtaling 17-739 QRNNP 1/28/17 603683  
4- Beckett Spilde, WI  
Rikow 7207 1/3/17 602767

### FEBRUARY AND LATER RAM LAMBS

1- Marinda Shell, OH  
Shell 1719 2/7/17 602247  
2- Jenna Sullivan, CT  
Sullivan 1707 2/5/17 603245  
3- Ashton Daniels, MO  
Plaza Hamps 1542 2/19/17 602997  
4- Vanessa Herrig, MN  
Herrig 1159 3/1/17 602901  
5- William Taylor, KY  
Taylor Stock 767 2/23/17 602631  
6- Cailey Cahoon, IL  
Cahoon 492 3/2/17 602758  
7- Cailey Cahoon, IL  
Cahoon 443 2/2/17 602757  
8- Mikara Anderson, PA  
Jadewood 17041 2/8/17 602567



### RESERVE CHAMPION RAM

Marinda Shell, OH  
Shell 1719 2/7/17 602247

### YEARLING EWES

1- Jenna Sullivan, CT  
Sullivan 1615 2/20/16 62852D  
2- Mikara Anderson, PA  
Peterson 9123-16086 RR 2/1/16 68145D  
3- Bobendrier Boys, MN  
Bobendrier Boys 16-26 1/6/16 61880D  
4- Jenna Sullivan, CT  
Sullivan 1616 3/9/16 62853D  
5- William Taylor, KY  
Taylor Stock Farm 63 1/6/16 62626D  
6- Bobendrier Boys, MN  
Bobendrier 16-06 1/2/16 61605D  
7- Vanessa Herrig, MN  
Herrig 1114 3/15/16 64471D  
8- Bobendrier Boys, MN  
Bobendrier Boys 16-17 1/4/16 61879D  
9- Beau Mumm, IL  
Mumm 1648 2/22/16 61654D  
10- William Taylor, KY  
Taylor Stock 612 2/19/16 62628D  
11- Beckett Spilde, WI  
Spilde 2338 2/17/16 63075D  
12- Marinda Shell, OH  
Bobendrier Boys 16-65 3/18/16 61895D  
13- Beau Mumm, OH  
Mumm 1666 3/7/16 61659D  
14- Logan Corzatt, IL  
Corzatt 1628 2/14/16 70692D  
15- Marinda Shell, OH  
Hickman 1254 1/4/16 61075D  
16- Beckett Spilde, WI  
Rikow 6029 1/2/16 62845D

### SENIOR EWE LAMBS

1- Faith Houghtaling, SD  
Houghtaling 16-722 9/24/16 67073D  
2- Dylan Klug, IA  
Klug HH 16-198 RR Benz 9/14/16 65559D

3- Lindsay Shell, OH  
Heishman 16-87 10/15/16 68522D

### SENIOR CHAMPION EWE

Jenna Sullivan, CT  
Sullivan 1615 2/20/16 62852D

### RESERVE SENIOR CHAMPION EWE

Mikara Anderson, PA  
Peterson 9123-16086 RR 2/1/16 68145D

### JANUARY EWE LAMBS

1- Bobendrier Boys, MN  
Bobendrier Boys 17-05 1/2/17 68114D  
2- Beau Mumm, IL  
Held 17-1886 1/5/17 67149D  
3- Cailey Cahoon, IL  
Cahoon 431 1/3/17 68622D  
4- Cailey Cahoon, IL  
Cahoon 445 1/21/17 68629D  
5- Jenna Sullivan, CT  
Larson L&L 17-702 1/6/17 70708D  
6- William Taylor, KY  
Taylor Stock 71 1/2/17 68177D  
7- Mikara Anderson, PA  
Jadewood 17012 1/15/17 67970D  
8- Danielle Houghtaling, SD  
Houghtaling 17-729 RRNNP 1/20/17 68828D

### FEBRUARY EWE LAMBS

1- Tinleigh Spoonster, MO  
Spoonster 17-19 ET 2/1/17 67995D  
2- Dylan Klug, IA  
Klug HH 17-206T 2/5/17 67522D  
3- Danielle Houghtaling, SD  
Houghtaling 17-766 2/4/17 68834D  
4- Jenna Sullivan, CT  
Sullivan 1712 2/17/17 70069D  
5- Bobendrier Boys, MN  
Bobendrier Boys 17-43 2/5/17 68135D  
6- Faith Houghtaling, SD  
Houghtaling 17-765 2/4/17 68833D  
7- Bobendrier Boys, MN  
Bobendrier Boys 17-48 2/16/17 71310D  
8- Jenna Sullivan, CT  
Sullivan 1705 2/3/17 70070D  
9- Marinda Shell, OH  
Caskey 7500 2/2/17 67425D  
10- Logan Corzatt, IL  
Corzatt 1728 2/18/17 69542D  
11- Jesse Zirkle, VA  
Gochenour 0254 2/14/17 66959D  
12- Lizzi Zirkle, VA  
Gochenour 0252 2/7/17 66958D

### MARCH EWE LAMBS

1- Ethan Kennedy, NY  
Royal 705 3/2/17 68850D  
2- Tinleigh Spoonster, MO  
Spoonster 17-30 3/2/17 67323D



### CHAMPION RAM

Tinleigh Spoonster, MO  
Insight Baa Baa Acres 236 1/28/17 602360

3- Jenna Sullivan, CT Larson L&L 17-726	3/9/17	70716D
4- Dylan Klug, WI Klug HH 17-213T QR	3/2/17	67528D
5- Miranda Hunter, DE Carr 1703	3/3/17	68767D
6- Kelsey Swonger, KS Newland 0435	3/28/17	70613D
7- Ashton Daniels, MO Plaza Hamps 1368	3/20/17	69273D

**JUNIOR CHAMPION EWE**

Tinleigh Spoonster, MO Spoonster 17-19 ET	2/1/17	67995D
--	--------	--------

**RESERVE JUNIOR CHAMPION EWE**

Ethan Kennedy, NY Royal 705	3/2/17	68850D
--------------------------------	--------	--------



**CHAMPION EWE**

Jenna Sullivan, CT Sullivan 1615	2/20/16	62852D
-------------------------------------	---------	--------



**RESERVE CHAMPION EWE**

Mikara Anderson, PA Peterson 9123-16086 RR	2/1/16	68145D
---	--------	--------

**-SLICK-SHORN DIVISION-**

**SENIOR RAM LAMBS**

1- Abigail Wilson, NC Lazy 5 2954	10/1/16	602224
2- Abigail Wilson, NC Lazy 5 2950	10/1/16	602220
3- Abigail Wilson, NC Lazy 5 2952	10/1/16	602222

**JANUARY RAM LAMBS**

1- Campbell Coyle, KY Poe A7151-17	1/16/17	602664
2- Hayden Taylor, WI Taylor 1709	1/13/17	602472
3- Alivia Porter, IL Kleinert 5016	1/12/17	603707

4- Rachel Flanders, IN Flanders VIP 7632	1/28/17	603724
5- Abby Clonts, MO Wright0581ET "CowboyKool-Aid"	1/12/17	603168

**FEBRUARY AND LATER RAM LAMBS**

1- Morgan Hauger, IN Hauger 0280	2/16/17	603127
2- Alivia Porter, IL Storms 670 AI	3/7/17	603056
3- Rachel Flanders, IN Flanders VIP 7595	3/2/17	603725
4- Alivia Porter, IL Storms 661 AI	2/19/17	603483
5- Alison Kelly, IN Impact 17140ET	3/5/17	603688
6- Levi Brooks, TN Walnut Ridge 007	2/17/17	602555
7- Lane Brooks, TN Walnut Ridge 003	2/3/17	602556



**CHAMPION RAM**

Campbell Coyle, KY Poe A7151-17	1/16/17	602664
------------------------------------	---------	--------



**RESERVE CHAMPION RAM**

Morgan Hauger, IN Hauger 0280	2/16/17	603127
----------------------------------	---------	--------

**EARLY YEARLING EWES**

1- Jordyn Leininger, IN Slack 6230	1/6/16	63157D
2- Rachel Flanders, IN Flanders VIP 5400	9/5/15	65421D
3- Logan Corzatt, IL Corzatt 1606 SS	1/1/16	63268D
4- Ty Thorson, WI Metro 1604	1/15/16	61548D
5- Hickman, IN Flanders VIP 6233	1/4/16	63828D
6- Alivia Porter, IL Kleinert 4891	1/8/16	66517D
7- Matthew Connolly, NC Wheaton A6-063 RR ET	1/18/16	64608D

8- Campbell, Corbin & Clark Coyle, KY Wheaton 6-098	1/26/16	66340D
9- Campbell, Corbin & Clark Coyle, KY Terradise 6108	1/11/16	62059D
10- Ty Thorson, WI Metro 1608	1/25/16	61551D
11- Knudson, IN Viking 6473	1/1/16	71907D
12- Gracie Block, IN Hancock 6048	1/8/16	62552D
13- TJ Yazell, KY PPF 625	1/24/16	64810D
14- Hayden Taylor, WI Taylor 15-533	9/30/15	62758D
15- Parsley, IN Flanders VIP 6897	1/6/16	61778D
16- Knudson, IN Viking 6500	1/4/16	71906D
17- Matthew Connolly, NC Shroyer 1715	1/15/16	63772D

**LATE YEARLING EWES**

1- Wyatt Nixon, WI JFSS 6136	3/6/16	64595D
2- Miranda Hunter, DE Poe 6342-16	2/17/16	62976D
3- Ty Thorson, WI Rupnow 1111	2/11/16	61547D
4- Abigail Wilson, NC Lazy 5 2939	4/1/16	63801D
5- Jordyn Leininger, IN Slack 6252	2/7/16	63159D
6- Hannah Schultz, WI Metro 1619	2/6/16	61562D
7- Abigail Wilson, NC Lazy 5 2944	2/18/16	64411D
8- Rachel Flanders, IN Flanders VIP 6288	2/19/16	61788D
9- Abigail Wilson, NC Lazy 5 2940	4/1/16	63802D
10- Justin Mason, OH Lazy 5 2948	4/25/16	66893D
11- Campbell, Corbin & Clark Coyle, KY Terradise 6133	3/3/16	62062D
12- Kennedy Algire, OH Gordoneer 1621	2/15/16	65976D
13- Alexis Looten, MO Slack 6643	3/12/16	68740D
14- Hayden Meeks, TN Meeks 123	3/2/16	64343D
15- Caroline Jenkins, GA M&M 0440	2/1/16	64582D
16- Dylan Johnson, TN Goddard 232	1/29/16	61936D
17- Mathew Bell, TN Meeks 121	3/10/16	64341D

**SENIOR EWE LAMBS**

1- Abigail Wilson, NC Lazy 5 2955	10/3/16	66890D
2- Kennedy, IN Friesen 1713	12/24/16	71659D
3- Morgan Hauger, IN Poe 7126	12/10/16	68333D
4- Matthew Connolly, NC Wheaton 7-023 ET	12/10/16	71173D
5- Rachel Flanders, IN Flanders VIP 6526	9/1/16	69550D

6- Kaitlyn Hicks, IN Hicks A7103	12/30/16	69926D	11- Clark Coyle, KY Poe A7028-17	1/7/17	68321D	7- Silverthorn, IN Cabaniss 17-226G	2/6/17	67112D
7- Korbin Heminger, IN Poe 7309 AI	12/25/16	71336D	12- Justin Mason, OH Lazy 5 2972	1/4/17	69662D	8- Abby Clonts, MO Wright WH 0003	2/9/17	71081D
6- Campbell, Corbin & Clark Coyle, KY Poe A7076-17	12/10/16	68324D	13- Silverthorn, IN Hired Hand 7026	1/12/17	69422D	9- Burkhalter, OK Wright 0527/81BK	2/6/17	68495D
7- Alison Farmer, MD Poe A7087-17 AI	12/8/16	69916D	14- Jackson, MI 1788	1/15/17	69761D	10- Morgan Hauger, IN Poe 7034	2/5/17	71338D
<b>SENIOR CHAMPION EWE</b>			15- Hayden Taylor, WI U of W 17-047	1/14/17	67657D	11- Jayda Mundell, IN Hired Hand 7008	2/4/17	69421D
Wyatt Nixon, WI JFSS 6136	3/6/16	64595D	16- Hayden Taylor, WI Taylor 17-11	1/13/17	67746D	12- Korbin Heminger, IN Poe 7334 AI	2/4/17	71340D
<b>RESERVE SENIOR CHAMPION EWE</b>			17- Allison Farmer, MD Beatty PA 1918 7270	1/14/17	68375D	13- Karrie Van Winkle, KS Ott 78040	2/2/17	71451D
Jordyn Leininger, IN Slack 6230	1/6/16	63157D	18- Emily Fry, IN Hired Hand 7019	1/12/17	69423D	14- Blake Dailey, KY PPF 736	2/1/17	70876D
<b>EARLY JANUARY EWE LAMBS</b>			<b>LATE JANUARY EWE LAMBS</b>			15- Shane Flanagan, TX Hired Hand 7103	2/4/17	69425D
1- Abigail Wilson, NC Lazy 5 2971	1/3/17	69661D	1- Ty Thorson, WI Metro 1714	1/24/17	67235D	16- Rhianna Cyr, IL Kleinert 5055	2/4/17	71779D
2- Kelby Roberts, IN SSL 1729 IN80032-1729ET	1/6/17	69435D	2- Morgan Hauger, IN Poe 7240	1/24/17	68336D	<b>INTERMEDIATE FEBRUARY EWE LAMBS</b>		
3- Rowings, IN SSL 1714 ET	1/6/17	69632D	3- Campbell, Corbin & Clark Coyle, KY Poe A7220-17ET	1/20/17	68326D	1- TJ Yazell, KY PPF 708	2/13/17	70671D
4- Hunter Knudson, IN Viking 7101	1/3/17	71904D	4- Garrett Friesen, IN Nelssen 17009	1/20/17	67590D	2- Morgan Hauger, IN Poe 7070	2/20/17	71339D
5- Hunter Knudson, IN Viking 7102	1/3/17	71905D	5- Abigail Wilson, NC Lazy 5 2973	1/20/17	69490D	3- Wyatt Nixon, WI JFSS 7163	2/20/17	71359D
6- Hayden Deno, IN Deno Farms 7007	1/3/17	70043D	6- Haley Webb, GA NSLS 17146	1/29/17	70678D	4- Callie Taylor, PA Jadewood 2270	2/20/17	71445D
7- Conner Unger, IL Hanson Farms 0364	1/4/17	70317D	7- Hickman, IN Flanders VIP 7990	1/18/17	69097D	5- Anderson, IN Carson 1718	2/20/17	72002D
8- Corbin Coyle, KY Poe A7003-17	1/5/17	68320D	8- Morgan Hauger, IN Poe 7205	1/20/17	68369D	6- Wesley Berget, WI Lilli	2/16/17	Pending
9- Riley McGhee, IN Smith 1353	1/2/17	67693D	9- Richardson, GA JFSS 7052	1/17/17	68397D	7- Schultz, WI Metro 1732	2/13/17	67255D
10- Blake Dailey, KY PPF723	1/1/17	70875D	10- Sam Bacon, PA Fleener 1740	1/28/17	67498D	8- Allison Farmer, MD FCL 1723	2/17/17	68554D
11- Megan Kelly, IN Kelly 20597	1/1/17	69442D	11- Justin Mason, OH Lazy 5 2974	1/20/17	69663D	9- Skilar Burch, TN Friesen 1760	2/17/17	67791D
12- Justin Mason, OH Lazy 5 2972	1/4/17	69662D	12- Campbell, Corbin & Clark Coyle, KY Poe A7160-17	1/17/17	68322D	10- Ty Thorson, WI Metro 1737	2/18/17	67244D
13- Emily Nave, TN Friesen 1715	1/3/17	71660D	13- Ivey Cook, GA M&M 0452	1/29/17	71311D	11- Markley, IN Markley 0036	2/18/17	69611D
14- Korbin Heminger, IN Poe 7211 AI	1/5/17	71337D	14- Shelby Edwards, IN Poe A7274-17 ET	1/20/17	68335D	12- Korbin Heminger, IN Poe A7275-17 AI	2/15/17	68312D
15- Skilar Burch, TN Friesen 1725 ET	1/2/17	67735D	15- Abby Clonts, MO Wright 0522-YL 166 AI	1/22/17	69826D	13- Sam Bacon, PA Bacon 17-25	2/19/17	69683D
<b>INTERMEDIATE JANUARY EWE LAMBS</b>			16- Caroline Jenkins, GA Stamey 38304	1/22/17	70832D	14- Sidney McAllister, OH Korb 1761	2/20/17	70587D
1- Jasmine Rudicel, IN Rudicel 7028	1/15/17	67075D	17- Abby Clonts, MO Wright 0519-YL 168 AI	1/20/17	69827D	15- Abby Cardwell, OK JFSS 7088 ET	2/20/17	68412D
2- Rachel Flanders, IN Flanders VIP 7455	1/7/17	69093D	18- Gracie Block, IN Hubbard 1715	1/23/17	71455D	16- Williamson, AL Mickey	2/6/16	71314D
3- Miranda Hunter, DE Poe A7102-17 AI	1/9/17	68315D	<b>EARLY FEBRUARY EWE LAMBS</b>			17- Campbell, Corbin & Clark Coyle, KY Terradise 7032	2/20/17	68204D
4- Rachel Flanders, IN Flanders VIP 7496	1/13/17	69127D	1- Rachel Olver, PA FCL 1720	2/5/17	68552D	<b>LATE FEBRUARY EWE LAMBS</b>		
5- Ty Thorson, WI Rupnow 1202	1/7/17	67248D	2- Jordyn Leininger, IN Slack Z 7160	2/1/17	68883D	1- Abigail Wilson, NC Lazy 5 2983	2/24/17	69648D
6- Sidney McAllister, OH Shroyer 1833 Yellow	1/15/17	72023D	3- Wyatt Nixon, WI JFSS 7131	2/1/17	68425D	2- Haley Webb, GA Flanders VIP 7594	2/23/17	69132D
7- Jordyn Leininger, IN Slack Z 7104	1/10/17	68881D	4- Diane Hobbs, IN Dee Brothers LLC 7119	2/6/17	70416D	3- Abigail Wilson, NC Lazy 5 2978	2/23/17	69664D
8- Matthew Connolly, NC Stitzlein Farms 2383	1/14/17	70939D	5- Ty Thorson, WI Metro 1722	2/9/17	67238D	4- Rachel Clark, PA FCL RC 1725	2/21/17	70556D
9- Sidney McAllister, OH Shroyer 1848 Yellow	1/15/17	72022D	6- Rachel Flanders, IN Flanders VIP 7368	2/3/17	69086D	5- Abigail Wilson, NC Lazy 5 2981	2/24/17	69667D
10- Alison Kelly, IN Slack 7350	1/7/17	68513D						

6- Logan Corzatt, IL Corzatt 1741 SS	2/28/17	69545D
7- Sidney McAllister, OH Korb 1751	2/22/17	69825D
8- Hayden Taylor, WI Taylor 17-27	2/24/17	67748D
9- Kennedy Algire, OH Carr 1704	3/3/17	68773D
10- Kolton Gilbreath, IN Friesen 1752	2/21/17	Pending
11- Justin Mason, OH Lazy 5 2979	2/23/17	69665D
12- Justin Mason, OH Lazy 5 2981	2/24/17	69667D
13- Justin Mason, OH Lazy 5 2982	2/24/17	69647D

**EARLY MARCH EWE LAMBS**

1- Landon Bewley, IN Slack 7424 IN 25-7921	3/3/17	68698D
2- Miranda Hunter, DE Poe A7481-17	3/4/17	68136D
3- Rachel Flanders, IN Flanders VIP 7637	3/8/17	69120D
4- Diane Hobbs, IN Dee Brothers LLC 7206	3/4/17	70417D
5- Jordyn Leininger, IN Slack 7570	3/4/17	71748D
6- Hayley Webb, GA NSLS 17163	3/1/17	70680D
7- TJ Yazell, KY PPF 716	3/1/17	70872D
8- Morgan Hauger, IN Poe 7242	3/1/17	71342D
9- Shayle Maddox, OK Cabaniss 17-222G	3/3/17	70300D
10- Ireland Shuck, IN Wheaton A 7134 ET	3/4/17	71669D
11- Courtney Lehe, IN 1720	3/10/17	71172D
12- Blake Dailey, KY PPF 710	3/1/17	70874D
13- Korbin Heminger, IN Poe 7255 AI	3/10/17	71341D
14- Sidney McAllister, OH Carr 1705	3/3/17	65402D
15- Campbell, Corbin & Clark Coyle, KY Terradise 7045	3/6/17	68191D
16- Austin Wright, IN Paxton 21	3/7/17	71672D
17- Brodie Payne, MO Plaza Hamps 1336	3/2/17	69285D
18- Kylie Cyr, IL Kleinert 5080	3/9/17	71782D

**LATE MARCH EWE LAMBS**

1- Brady Meudt, WI 7191	3/20/17	71362D
2- Abigail Wilson, NC Lazy 5 3104	3/1/17	71240D
3- Seth Michel, IN Michel 1740	3/21/17	68966D
4- Grace Dent, IN Carson 1711	3/19/17	72003D
5- Abby Cardwell, OK NOC RM-3110-7171	4/10/17	70777D
6- Abby Cardwell, OK NOC CM-4146-7146	4/4/17	70768D

7- Abigail Wilson, NC Lazy 5 2998	3/28/17	69655D
8- Morgan Hauger, IN Poe 7269	3/25/17	71343D
9- Matthew Connolly, NC C&M 411	3/11/17	70941D
10- Matthew Connolly, NC C&M 413	3/11/17	70940D
11- Marshall Hull, TN Hull 7040	3/29/17	71675D
12- Sidney McAllister, OH Shroyer 1859 yellow	3/15/17	72025D
13- Korbin Heminger, IN Poe 7195 AI	3/30/17	71344D
14- Williamson, AL Malea	3/18/17	71313D
15- Justin Mason, OH Lazy 5 2999 ET	3/28/17	69656D
16- Jacen Wilinski, WI DDJ-950	3/24/17	68457D
17- Burkhalter, OK Wright 551 BK 85	3/11/17	71018D
18- Burkhalter, OK Wright 555 BK-99	3/11/17	71019D

**JUNIOR CHAMPION EWE**

Rachel Olver, PA  
FCL 1720 2/5/17 68552D

**RESERVE JUNIOR CHAMPION EWE**

Landon Bewley, IN  
Slack 7424 IN 25-7921 3/3/17 68698D



**CHAMPION EWE**

Wyatt Nixon, WI  
JFSS 6136 3/6/16 64595D



**RESERVE CHAMPION EWE**

Jordyn Leininger, IN  
Slack 6230 1/6/16 63157D



**GRAND CHAMPION EWE  
CHAMPION SLICK-SHORN EWE**

Wyatt Nixon, WI  
JFSS 6136 3/6/16 64595D



**RES. GRAND CHAMPION EWE  
CHAMPION FITTED EWE**

Jenna Sullivan, CT  
Sullivan 1615 2/20/16 62852D



**GRAND CHAMPION RAM  
CHAMPION FITTED RAM**

Tinleigh Spoonster, MO  
Insight Baa Baa Acres 236 1/28/17 602360



**RES. GRAND CHAMPION RAM  
RESERVE CHAMPION FITTED RAM**

Marinda Shell, OH  
Shell 1719 2/7/17 602247

**BREEDER YOUNG FLOCK**

1- Bobendrier Boys, MN

**PAIR OF HAMPSHIRE**

1- Tinleigh Spoonster, MO

# *FROM AJHSA PRESIDENT*

Some people say “the future is now”, which may be true when it comes to the American Junior Hampshire Sheep Association.

The AJHSA board members met for the first time via conference call on October 29th to discuss ideas for the upcoming year and Louisville. While in Louisville, AJHSA board members met on November 10th and finalized plans for the remaining week. Officers were elected and include: Danielle Houghtaling-SD (President), Jenna Sullivan-CT (Vice President), Morgan Hauger-IN (Secretary/Treasurer), Zach Lyman-MA, Kaylan Risacher-MN, Faith Houghtaling-SD, Amanda King-CA, and Campbell Coyle-KY. The ambassadors are led by Jeff Ebert and Katelyn Parsons. The Stars of Louisville sale, followed by a junior Hampshire member social gathering, was held the evening of November 11th. The junior board members were able to sell raffle tickets during the sale for a Heiniger clipper that was donated by Heiniger. After the sale, all junior Hampshire members were invited to have pizza, make promotional posters for the Hampshire breed, and engage in a scavenger hunt. A senior Hampshire board meeting was held on November 12th and was attended by Danielle Houghtaling, Faith Houghtaling, and Amanda King to represent the junior board members.

The junior Hampshire show in Louisville on Saturday, November 11th, was well attended and was a quality set throughout. Several junior members were also able to stay for the open-class Hampshire show on Monday, the 13th. As the weekend wound down, we were all very pleased with the outcome of NAILE.

The AJHSA board members are currently planning for summer shows and activities that can be executed regionally or nationally. We hope to increase membership involvement and possibly even membership itself for juniors within the Hampshire breed. The best is yet to come for this association!

**Respectfully Yours,  
Danielle Houghtaling  
AJHSA President**

# AMERICAN HAMPSHIRE SHEEP ASSOCIATION

## APPLICATION FOR SPONSORING JUNIOR HAMPSHIRE SHOWS

### RULES:

1. The American Hampshire Sheep Association is focused on supporting junior youth programs.
2. The funds donated by the AHSA are meant to reward junior Hampshire youth from across the USA.
3. Only junior shows will be considered for support.
4. The dollars donated are to be given to the exhibitors of the Champion Hampshire Ewe and Reserve Champion Hampshire Ewe. \$100 will be paid directly to the exhibitors of these ewes from the AHSA, once the youth provide the AHSA with a useable photo of their winning ewe.
5. The AHSA will provide awards to selected shows on an annual basis.
6. Shows receiving donations can only receive donations in two consecutive years.
7. Application deadline is March 31, 2018. Shows will receive notification by May 15, 2018.

Name of Show: \_\_\_\_\_

Location of Show: \_\_\_\_\_

Date of Application: \_\_\_\_\_ Date of Show: \_\_\_\_\_

Contact Person: Name \_\_\_\_\_

Phone Number \_\_\_\_\_

Email Address \_\_\_\_\_

Hampshire classes available at your show in 2017?

Number of Hampshires shown in 2017? \_\_\_\_\_ 2016? \_\_\_\_\_

Classes provided for Hampshires in 2017?

Classes provided for Hampshires in 2016?

Return completed form to the AHSA, PO Box 231, Wamego, KS 66547

# KJELDGAARD FARMS

*"Our passion-sheep with style and size."*

THANKS TO ALL THE BUYERS AT THE FARM THIS YEAR, IT'S BEEN ANOTHER REWARDING YEAR



1ST PLACE CLASS 1 YEARLING EWES  
AT LOUISVILLE.

RESERVE CHAMPION FITTED EWE AT THE  
NATIONAL HAMPSHIRE SHOW - LOUISVILLE  
THIS PAIR OF YEARLING EWES WAS 1ST  
PLACE PAIR AT LOUISVILLE, JUST LIKE THEY  
HAD BEEN EVERYWHERE SHOWN IN 2017.



WE WILL HAVE A COUPLE COMING YEARLINGS BY HIM AND WILL  
HAVE A GOOD SELECTION ON LAMBS THIS YEAR BY HIM. HE IS  
ONE OF THE MOST DYNAMIC BIG RAMS WE HAVE SEEN IN A LONG  
TIME, WHAT EVEN MAKES HIM MORE UNIQUE IS HE HAS 3 OF THE  
BEST HAMP RAM'S IN HIS PEDIGREE THAT I HAVE RAISED. LIMIT  
UP, POWER POINT AND HIGH DEFINITION. COME TAKE A LOOK FOR  
YOURSELF NEXT SPRING.



Al and Mary Kjeldgaard | 440 Co. Rd. IJ | Tekamah, NE 68061

almary@microlnk.com | 402.870.0397



# HAMPSHIRE JUNIOR SHOW DURING THE NATIONAL HAMPSHIRE SHOW AT SEDALIA

The AHSA is sponsoring a show for AJHSA members at Sedalia on Tuesday evening, June 26th. There will be classes for yearling ewes and ewe lambs. Fitted and slick shorn classes will be offered as well as three age groups of showmanship classes.

Sale discounts to be used on Hampshire's as well as cash prices will be offered, including \$1000 for the Champion ewe and \$500 for the Reserve ewe.

- 
- Must be a AJHSA member to show
    - No entry fee for your first entry
  - \$15 entry fee for all animals after the first entry
    - No entry fee for showmanship

# INDEX TO HEARTBEAT ADVERTISERS

<b>B</b>		<b>D</b>		<b>H</b>	
BAA BAA ACRES	35	DOUBLE F CLUB	38-39	HELD HAMPSHIRE	11
BOBENDRIER BOYS	INSIDE	LAMBS		HERRIC HAMPSHIRE	40
BOBENDRIER HAMPSHIRE	FRONT			HIGHLAND HAMPSHIRE   KLUG	30
	COVER	<b>F</b>		HOUGHTALING HAMPSHIRE	29
<b>C</b>		FINDER	37	HOWELL CLUB LAMBS	25
CHAPIN HAMPS	27				

<b>K</b>		<b>N</b>		<b>R</b>	
KJELDGAARD HAMPSHIRE	54	NELSON HAMPSHIRE	21	RIKOW HAMPS	INSIDE
KLEINERT HAMPSHIRE	22			ROSELAWN LEGACY	BACK
		<b>P</b>		HAMPSHIRE	COVER
		PINE LAWN FARMS	36		
				<b>S</b>	
				SIMPSON'S	12
				SHEAR WE GO FARM	BACK
				SULLIVANS	COVER
				SOUTH DAKOTA STATE	
				UNIVERSITY	25
				SPOONSTER HAMPSHIRE	34
				<b>V</b>	
				VAN CLEAVE HAMPS	47
				<b>W</b>	
				WILLOUGHBY SALES	33

## ATTENTION HAMPSHIRE BREEDERS!

Make plans now to attend these top upcoming sales!

Entry forms for all our sales may be found on our website.  
**ALL SALES FEATURE BOTH BREEDING HAMPS & WETHER SIRES & DAMS!**

### ADVERTISE NOW!

**The Banner**

Join the nearly 3,000 PAID subscribers nationwide who keep up with the most CURRENT news offering in the industry!

### MARYLAND SHEEP & WOOL FESTIVAL ALL-BREEDS SALE

HOWARD COUNTY FAIRGROUNDS  
WEST FRIENDSHIP, MD

Entry Deadline March 10!

**SHOW: Friday, May 4 • 7:00 PM**  
**SALE: Saturday, May 5 • 6:00 PM**

*Selling All Registered Breeds Of Sheep!*  
 Yearling Ewes - Fall Ewe Lambs - Spring Ewe Lambs - Rams

### ILLINI ALL-BREEDS SPRING SALE

Friday & Saturday  
**APRIL 6-7**

IL STATE FAIRGROUNDS • SPRINGFIELD, IL

### THE BIG OHIO SALE WEEKEND!

EST. 800 HEAD TO SELL!

**EASTERN REGIONAL HAMPSHIRE SALE**

Entry Deadline March 10!

Thursday, Friday & Saturday  
**MAY 10-12 EATON, OH**

Preble County Fairgrounds

### GREAT LAKES SHOW & SALE

Entry Deadline March 15!

WAYNE COUNTY FAIRGROUNDS • WOOSTER, OHIO

SHOW: 9:00 A.M. FRIDAY  
**MAY 25**

SHEEP SALE: 10:00 A.M. SATURDAY  
**MAY 26**

For information or free sale catalog, see us on the web or contact us at:



**P.O. Box 500**  
**Cuba, IL 61427**  
**309/785-5058**  
**Fax: 309/785-5050**

Website: [www.bannersheepmagazine.com](http://www.bannersheepmagazine.com) • Email: [sales.banner@sybertech.net](mailto:sales.banner@sybertech.net)



*Here's a heads up...  
for what's coming in 2018!*



**A SNAPSHOT OF OUR YEARLING EWES...THE BEST SET WE'VE EVER RAISED!  
LOOK FOR A SELECT GROUP SELLING ON APRIL 29!**



**RIKOW 7027**  
5th January Ram Lamb  
2017 NAILE  
He's growing into a big,  
powerful stud!



**"DIAMOND"**  
4th Late Yearling Ewe  
2017 NAILE  
This HomeBoy granddaughter is  
bred for March lambs. Stay tuned!

*Join Us on April 29th!  
One Day Only!*

**FOR THE 4TH ANNUAL  
RIKOW HAMPS  
ONLINE SALE**

Our offering will include an elite set of  
yearling ewes, fall ewe lambs, spring-born  
ewe lambs and stud ram prospects all  
available on [wlivestock.com](http://wlivestock.com).

Give us a call to learn more!

**RICHARD KRACKOW**

ARCADIA, WI • [RKDREALT@TRIWEST.NET](mailto:RKDREALT@TRIWEST.NET) • PH: 608.343.2899

**WWW.RIKOWHAMP.COM**

**HAMPSHIRE HEARTBEAT**

**PO Box 21, 305 Lincoln**

**Wamego, Kansas 66547**

*Change Service Requested*

# SHEAR WE GO FARM

2017 - WHAT A YEAR! WHEN PREPARATION MET OPPORTUNITY!

**GRAND CHAMPION HAMPSHIRE EWE  
SULLIVAN 1615 - "RACHAEL"**



**NATIONAL HAMPSHIRE SHOW NAILE  
GRAND CHAMPION HAMPSHIRE EWE**

- 2017 NORTHEAST YOUTH SHEEP SHOW - 2017 EASTERN STATES EXPOSITION  
- 2017 NAILE JUNIOR SHOW FITTED HAMPSHIRE - 2017 NAILE OPEN SHOW OVERALL HAMPSHIRE

**THANK YOU TO ALL OUR FRIENDS,  
SUPPORTERS AND BUYERS IN 2017-**

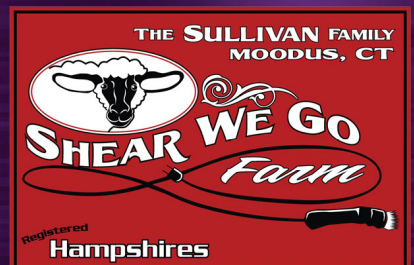
CAN'T WAIT TO SEE WHAT  
OPPORTUNITIES ARE AHEAD!

**SPECIAL THANKS TO THE BEST  
SHOW CREW IN THE WORLD!**

**BRAD AND BRENT LARSON, ABIGAIL, ASHLEY  
AND TIRZAH RASYS AND RACHAEL GATELY**

**NATIONAL  
HAMPSHIRE  
SHOW NAILE**

**RESERVE JUNIOR  
CHAMPION  
FITTED RAM  
SULLIVAN 1707 -  
"ESCAPE"**



**CONGRATS TO OUR FELLOW  
NEW ENGLANDERS!**

**STRAWBERRY FIELDS  
HAMPSHIRE -**

**JOHN AND SUE SEARLE,  
KYLE, CARA AND LOGAN THAYER**

2017 NAILE PREMIER EXHIBITOR  
2017 FIRST FLOCK  
2017 BEST HEADED RAM

**SHEAR WE GO FARM - The Sullivans | Roger, Lara, Jenna, Griffin and Grant | 74 Great Hillwood Road, Moodus, CT | 860.662.6070  
| rogersredbarn@yahoo.com | www.facebook.com/shearwegofarm**