



HAMPSHIRE

Fall 2020

Heartbeat

GENETICS

...FROM THE HOME OF THE RARE ONES...



RARE DEBUT

SIRED BY "RARE LEGEND"

1st Place Yearling Ram, Champion Ram
2020 "Save the Summer" Show, Spencer, IA

We are excited about the fall lambs being born that are sired by him. Watch for him and our other entries at the 2020 NAILE. We will have three bred yearlings and four exposed ewe lambs in the North Star Sale.



RARE REPUTATION

2018 NAILE NATIONAL CHAMPION RAM

Selling a number of yearling ewes bred to this exciting young stud this fall!

Our North Star Sale consignment will include three yearling ewes and four January born ewe lambs, many of them top show prospects! Transportation to Louisville will be available.

BOBENDRIER HAMPSHIRE · 1607 90th Ave. Pipestone, MN 56164 · jcbobendrier@gmail.com · 507.825.4072

BOBENDRIER BOYS · 1351 Hwy 75 Pipestone, MN 56164 · shebob8@gmail.com · 507.215.0334

2020 NORTH STAR SALE

OCTOBER 31, 2020
PIPESTONE, MINNESOTA



CONTENTS

- 4** **CALENDAR OF EVENTS**
A list of upcoming Hampshire events.
- 5** **PRESIDENT'S MESSAGE**
Updates from Katelyn Parsons.
- 6-7** **ARTICLE BY CLAY ELLIOTT, PH.D.**
How Sheep Producers Can Support Breeding Success Through High-Quality Nutrition.
- 9** **NEW SENIOR MEMBERS**
The newest members from June to September.
- 10** **HAMPSHIRE SUPPORTERS**
List of Hampshire Supporters who donated this year.
- 12-13** **GATSON FAMILY FEATURE**
A feature on Gatson Family/Gatson Hampshires.
- 15** **CALL 131ST ANNUAL MEETING**
Notes for the 131st Annual Meeting.
- 16** **RESULTS OF SOUTH DAKOTA JR. HAMPSHIRE SHOW**
Photos and notes from the South Dakota Jr. Hampshire Show.
- 20-21** **ARTICLE BY DR. MAGGIE HIGHLAND**
The Absence Of Overt Disease In The Pre-Lambing Ewe Does Not Equate To Good Health In The Fetus
- 22** **ARTICLE ON HAMPSHIRE DOWNS.**
Information on the Hampshire Downs in the United Kingdom.
- 24-25** **HEEG FAMILY FEATURE**
A feature on The Heeg Family/Crazy H Club Lambs.
- 26-29** **YOUTH CONNECTION**
Information on shearing and where to go from 2020.
- 30** **SIDNEY McALLISTER JUNIOR FEATURE**
A feature on Signey McAllister.
- 34** **THE JUNIOR CORNER**
Photos, reminders, and information from The Junior Board.
- 37-38** **AHSA PHOTO CONTEST WINNERS**
The 2020 winners of the photo contest.
- 42-43** **STATE HAMPSHIRE ASSOCIATIONS**
Contact information for state associations.
- 44-46** **DIRECTOR ELECTIONS**
Information for the upcoming board elections.
- 47-48** **HAMPSHIRE HISTORY**
A look back to 1983.
- 49** **ARTICLE FROM DR. ALISON CRANE**
Breeding and Early Gestation Nutrition In Ewes.
- 50-51** **SUMMER 2020 SHOW RESULTS**
Results from the North East Youth Sheep Show & Youth Sheep Expo.
- 51** **INTERNSHIP EXPERIENCE**
Annie shares her internship experience at AHSA.

Calendar of Events

** CHECK EVENT WEBSITES
IN CASE OF CANCELLATION OF EVENT
DUE TO COVID-19. **

OCTOBER

- 25: **Deadline for Hampshire Heritage Award**
- 26: **Entry deadline for AHSA Online Bred Ewe Sale**
- 31: **North Star Bred Ewe Sale Pipestone, MN**

NOVEMBER

- 4 **8:00am AHSA Online Bred Ewe Sale hosted by**
integritylivestocksales.com
- 13 **8:00am NAILE Market Lamb Showmanship Louisville, KY**
9:00am NAILE Breeding Sheep Showmanship Louisville, KY
5:00 pm NAILE Leadline Show Louisville, KY
- 14 **8:00am NAILE Junior Wether Show – Purebreds**
Louisville, KY
8:00am National Junior Hampshire Show Louisville, KY
- 17 **8:00am National Hampshire Show Louisville, KY**
- 22 **131st Annual American Hampshire Sheep**
Association Annual Meeting

JANUARY

- 15 **Deadline for Winter Hampshire Heartbeat**

Official Publication of the American Hampshire Sheep Association

420A Lincoln
P.O. Box 231

Wamego, Kansas 66547

Ph: 785-456-8500 Fax: 785-456-8599

asregistry@gmail.com • www.hampshires.org

EXECUTIVE SECRETARY: Jeff Ebert

STAFF: AMBER THOMPSON, JANETTE FUND, & ANNIE SCHOETMER

HEARTBEAT EDITOR: MORGAN HUELSMAN

AHSA Board of Directors

- President: Katelyn Parsons Vice President: Jason Mumm
- DISTRICT 1 - Dina King
(707) 322-3469 - dinamking@hotmail.com
1st term expires in 2021
- DISTRICT 2 - Jason Simpson, CO
(970) 371-0276 - jsimponcl@aol.com
2nd term expires 2020
- DISTRICT 3- Bart Cardwell, OK
(508) 628-6463 - bartcardwell@noc.edu
1st term expires 2022
- DISTRICT 4 - Philip Thomas, SD
(605) 759-0574 - thomashamps605@gmail.com
1st term expires 2022
- DISTRICT 5 - Ted Van Horn
(620) 285-9486 - ted.vanhorn@ks.usda.gov
1st term expires in 2021
- DISTRICT 6 - Debbie Deal, OH
(330) 607-1347 - ddeal1957@aol.com
3rd term expires 2020
- DISTRICT 7 - Scott Van Sickle
(270) 792-7173 - vansickleantiquityridgefarm@gmail.com
3rd term expires in 2021
- DISTRICT 8 - Katelyn Parsons
(413) 387-2726 - katelyn@mfbf.net
2nd term expires 2022
- AT-LARGE - Tom Bobendrier, MN
(507) 215-0334 - shebob@svtv.com
3rd term expires in 2021
- AT-LARGE - Derick Miller, TX
(806) 239-3670 - millerpecanfarms@gmail.com
3rd term expires 2022
- AT-LARGE- Jason Mumm, IL
(217) 377-2073 - meganmumm@hotmail.com
1st term expires 2020

Office Fee Schedule

- A. MEMBERSHIPS
- 1. New Senior Membership _____ \$25
 - 2. Annual Senior Dues _____ \$25
 - 3. New Junior Membership _____ \$15
 - 4. Junior Dues _____ \$15
- B. REGISTRATIONS
- Postmarked Sept 1 - April 30
 - 1. Animals under 12 months _____ \$4
 - 2. Animals over 12 months _____ \$8
 - Postmarked May 1 - August 31
 - 1. Animals under 12 months _____ \$6
 - 2. Animals over 12 months _____ \$12
- C. TRANSFERS
- 1. Under 90 Days (from date of sale) _____ \$10
 - 2. Over 90 Days (from date of sale) _____ \$20
- D. DUPLICATE CERTIFICATE _____ \$5
- E. RUSH FEE (PER TRANSACTION) _____ \$5

IF YOU WOULD LIKE TO HAVE YOUR SHOW
OR SALE LISTED IN OUR CALENDAR OF
EVENTS AND ON THE HAMPSHIRE WEBSITE,
PLEASE EMAIL US THE INFORMATION. FOR
SALES TO BE LISTED YOU MUST BE SELLING
REGISTERED HAMPSHIRE.

Greetings from your President

Dear Hampshire Breeders,

With such a rocky start to sale and show season, I realize many of us (myself included) did not or have not submitted the paperwork to register your Hampshires. However, I want to encourage you to get those papers in as soon as possible. With some shows starting to happen again, it is time to submit your information, so you get those lambs registered. After all, it's always better to be ahead for 2021 show and sale seasons than behind! If you need copies of the forms, please visit hampshires.org.

Speaking of show season 2020, while NAILE is happening, I should mention that AHSA is planning to host its annual membership meeting virtually. Please check your email for the link to attend on Nov. 22! During that meeting, director election results will be announced.

Directors positions up for election this year are District 2 (Jason Simpson has served two terms and is eligible for re-election). District 6 (Debbie Deal has served three terms and is ineligible for re-election). At-Large (Jason Mumm has served one term and is eligible for re-election). All those interested in running should have contacted Jeff so their bios could be included in this edition of the Heartbeat.

This year, our AJHSA board was relatively quiet due to COVID-19 and limited shows. However, hopefully in 2021, we will be able to see this group be more active and promoting the Hampshire breed at their local fairs and other activities.

As always if you have any questions or suggestions, please be sure to let your AHSA representative know.

Stay safe,

Katelyn Parsons
AHSA President

ADVERTISING IN THE HEARTBEAT

****Printed three times a year****

WINTER ♦ SPRING ♦ FALL

You can choose to run an individual ad in a single issue of your choice, or choose a three-issue contract. Contract ads will be placed in three consecutive issues of the Hampshire Heartbeat. Contracts begin with the next available issue and run through the next two consecutive issues. Either an individual ad or a contract can be purchased at any time throughout the year. Prices for both types are listed below or advertisers who provide ads ready for publication will receive a 15% discount on the listed prices. You may find more information at www.hampshires.org.

DEADLINES

Winter Issue: January 15th

Spring Issue: May 1st

Fall Issue: September 15th

Ad size or Placement	Single Issue Price	Three Issue Contract Price
Inside Covers	\$450.....	\$900
2-Page Spread.....	\$550.....	\$1100
Full Page	\$350.....	\$700
3/4 Page	\$300.....	\$600
2/3 Page	\$275.....	\$550
1/2 Page	\$250.....	\$500
1/3 Page	\$210.....	\$420
1/4 Page	\$165.....	\$330
1/6 Page	\$125.....	\$250
1/8 Page	\$100.....	\$200

How Sheep Producers Can Support Breeding Success Through High-Quality Nutrition

By: Clay Elliott, Ph.D., sheep nutritionist with Purina Animal Nutrition

The quintessential signs of fall – leaves changing colors, temperatures dropping, holiday décor on store shelves.... grass that once was soft and green turns brown, dry and dormant.

The transition from green to brown pasture is a key indicator that forage quality is on the decline. Providing your flock with supplement before forages turn and throughout the fall and winter ensures ewes receive the nutrition they need to support breeding and reproduction. Reliance on grass as the sole nutrition source can take a toll on everything from ewe body condition to breeding and reproduction. Adding supplement to the diet, even in the short-term, can positively impact the flock's productivity and your profitability.



Maximize fall forages and support ewe fertility this fall with these four nutrition tips:

1. Make mineral the foundation

The foundation of any ewe nutrition program is a high-quality mineral. It ensures ewes have all the nutrients they need to support a healthy pregnancy, parturition and more. Even the highest quality forages can fall short in providing ewes with necessary mineral nutrition, specifically calcium, magnesium, cobalt, vitamins A and E and selenium. It's important to remember pasture quality can change on a dime and forages that contained ample mineral levels last week might not today. Consider offering a mineral year-round so ewes have adequate mineral reserves when they need it most – like after breeding, during gestation and at parturition.



2. Act quickly when forage conditions change

Quality forage will contain somewhere between 18 to 21% protein. When that grass starts to go dormant, protein can drop to around 5%.

Ewes would have to consume more forage to make up for the steep drop in protein value, which isn't feasible or cost-effective in most real-world scenarios. Feeding a mineral and protein supplement can help provide additional nutrients sheep need to support fertility, especially when forage quality and quantity decline. My rule of thumb is to start supplementing protein 30 to 45 days before grass starts to visually decline.

3. Make the most of your forages

A key to profitability for nearly any sheep operation is using their home-grown or purchased forages as efficiently as possible. Maximizing forages are especially important as many producers face persistent drought in the Western states. That's where strategic supplementation comes in. Selecting a supplement with intake modifying properties can help ewes get more out of the forages they consume. Purina® Accuration® Hi-fat Tub was designed so sheep only consume what they need and nothing more. As forage quality declines, supplement consumption will rise. Conversely, if forage quality is good, ewes won't consume as much.

4. Monitor supplement consumption

Once you set out supplement, check in and ensure ewes are hitting target consumption on a weekly basis. Don't forget supplementation is an ongoing process. It's important to keep an eye on consumption to make sure ewes receive the full benefits of supplementation. Keep consumption on track with these best practices:

- Set out one supplement tub per 20-25 head.
- Monitor consumption, it should be approximately a half pound to one pound per ewe per day.
- If consumption is too low, move tubs to frequently trafficked spots like loafing areas, next to the water source, near shelter and underneath sheds.
- If consumption is too high, spread tubs out and move them further away from heavy traffic areas.

Investing in a high-quality ewe nutrition program before forages start to decline is an investment in your flock's overall productivity. Contact your local nutritionist to get started today.

Learn more about feeding mineral at purinamills.com/sheep-feed.



HEADED INTO 2021

Full Steam Ahead

EXCITING
PROSPECTS



AI SIRE

2020 has been nothing short of a challenge to say the least, however we have used the time at home to concentrate on improving our genetics and working with the promising young stock that are in the barn. We are beyond excited to see everyone in-person and to visit about our progressive program at TAM Hampshires.



NATURAL SIRE

TAM
HAMPSHIRE
FEDERALSBURG, MD

Steve, Laurie and Tyler Majchrzak
Steve's Cell/Text: 410.463.5476

New Senior Members

JUNE 1, 2020 – SEPTEMBER 30, 2020

CALIFORNIA

CASEY CLUB LAMBS (PAT & DENISE CASEY)

IDAHO

ROBYN OR BOB ROSS

ILLINOIS

HEIDI MUNSTERMAN

KNOB HILL LIVESTOCK (KIRBY JO & MILO BACON)

ARIANNA ROSS

INDIANA

MATT BUCKLAND

COIL CLUB LAMBS (TY COIL)

BLAKE NICKLE

NORMAN, LOGAN & JORDAN TUHOLSKI & DREW & SHANNON

HANDLEY

ELLA & GABE NEUENSCHWANDER

TAYLOR & TINLEY WALKER

WOOLDRIDGE FARMS CLUB LAMBS (TODD WOOLDRIDGE)

KANSAS

DANIELLE & SETH WINEINGER

MINNESOTA

ANDERSON SHEEP CO

FLATLAND HAMPSHIRE SHEEP & BOER GOATS

JENNIFER & KARLY HAMILTON

MISSOURI

CLINT, CALLIE & CLARA BAILEY

THERESA CROWLEY

BROOKLYN & GEORGE DILLARD

OHIO

DOUG & TINA MCALLISTER

OREGON

ROLLING THUNDER CLUB LAMBS

PENNSYLVANIA

STEVE SPAYD

DEBORAH SULLIVAN

TEXAS

LES & JULIE HARRIS

MIKE JEFFCOAT



SOUTH DAKOTA STATE UNIVERSITY

"Performance driven Hampshires with style!"

***VISITORS WELCOME
ANYTIME!***

**We are looking forward to
another great set of lambs
out of our stud rams!**



**Wheaton 6-189
Barely Legal X Wheaton 8-075**

**Thank you to all of the
buyers from our 2020 sales
and off the farm!**

**Look for us at the 2021
Watertown Winter Farm
Show & Sale.**

**FOR MORE INFORMATION:
Karolynn Marsan - UNIT MANAGER - CELL 208-661-4587**

**NSIP EBV'S AVAILABLE FOR ALL LAMBS.
BE SURE TO FOLLOW US ON FACEBOOK FOR
FLOCK UPDATES AND PHOTOS**

**HAMPSHIRE SUPPORTERS WHO DONATED TO THE
ALL-AMERICAN JUNIOR SHOW:**

MUMM HAMPSHIRE
BIRCH HILL HAMPSHIRE - M D ANDREW
BOBENDRIER HAMPSHIRE
ELECTRA FARM - EARL J HELLER
HELD'S HAMPSHIRE
HICKMAN'S HAMPSHIRE - JIM & JOY HICKMAN
NOC SHEEP CENTER - BART CARDWELL
SUMMEY FAMILY FARM
TED VAN HORN
JUDY MOORE

**HAMPSHIRE SUPPORTERS WHO DONATED MONEY TO THE
AMERICAN JUNIOR HAMPSHIRE SHEEP ASSOCIATION:**

JIM MILLER
MUMM HAMPSHIRE
BURNS-HALE LIVESTOCK - LOYAL & DEBORAH BURNS
EBERT SHEEP FARM -JEFF EBERT
HELD'S HAMPSHIRE
STONY ROAD FARM - SUSAN B MILLER
BOBENDRIER HAMPSHIRE
HICKMAN'S HAMPSHIRE - JIM & JOY HICKMAN

**HAMPSHIRE SUPPORTERS WHO DONATED TO THE AMERICAN JUNIOR
HAMPSHIRE SHEEP ASSOCIATION SCHOLARSHIP FUND:**

JIM MILLER
MCCANDLISH HAMPSHIRE - GARY MCCANDLISH
MUMM HAMPSHIRE
HELD'S HAMPSHIRE
HICKMAN'S HAMPSHIRE - JIM & JOY HICKMAN
KARBERVILLE FARMS & RANCH
BOBENDRIER HAMPSHIRE
DALLAS W HENRY



WWW.VIPCLUBLAMBS.COM

2nd place early yearling ewe class



Champion hampshire ewe overall 2020 youth expo shown by Kylie Schakel

2nd place fall ewe lamb



2nd place Jan hamp buck lamb



2nd place early jan ewe lamb class

Jerry Flanders, DVM

16260 Atlantic Rd. Noblesville, IN 46060 ♦ 317.508.4738 ♦ vip@vipanimalcare.com

Featuring Gatson Family



INTRODUCE YOURSELF & YOUR FAMILY

Gatson Hampshires consists of Adam and his wife Julie who raise corn, soybeans, wheat, Gelbvieh cattle and sheep on their farm in Vandalia, Missouri which has been in the family since 1880. Their oldest daughter Cheyenne lives in Raytown, Missouri with her husband, Brendan and their 1 year old twins, Otto and Adalind. Brendan is an Aldi manager and Cheyenne is a full time mom. Middle daughter Kasey teaches high school business and coaches girls basketball at Southern Boone High School in Ashland, Missouri. Youngest daughter Abilene came home after graduating from Mizzou with an Animal Science degree to farm alongside her parents.

GIVE US A BRIEF DESCRIPTION OF YOUR HAMPSHIRE FLOCK

We keep about 20 brood ewes. We have always tried to have sound, fast growing sheep that look like Hampshires. Fitting and showing frame type Hampshires has allowed our kids to learn work ethic and to strive for excellence as well as make many friends throughout the sheep business all over the country.

WHY DID YOU CHOOSE TO INCLUDE REGISTERED HAMPSHIRE IN YOUR SHEEP OPERATION?

When my siblings and I (Adam) started in sheep for 4-H in 1976 my dad liked the Hampshires he had in high school the best so we started in Hampshires. Calm dispositions and fast growth rate made for a great project.

WHAT ADVICE DO YOU HAVE FOR PEOPLE STARTING OUT IN THE SHEEP BUSINESS?

Raise ones you like. Work with people you trust and enjoy being around. Get the kids involved.

WHAT ARE ONE OR TWO ITEMS THAT YOU HAVE FOUND TO BE CRITICAL FOR THE SUCCESS OF YOUR SHEEP OPERATION?

Raise sound sheep that have some rib and internal dimension to grow. Get lambs here as close to January 1 as possible to hit higher spring lamb markets and beat the Missouri heat and humidity. Feed and fit well.

WHO ARE SOME PEOPLE THAT YOU CREDIT FOR YOUR SUCCESS WITH HAMPSHIRE?

The Lord has blessed us with a tremendously close and caring Missouri breeding sheep show family that we've always been able to enjoy competing in the show ring with while forming deep and lasting friendships through the generations. Specifically, my (Adam's) parents for starting the Gatson kids in Hampshires and Julie's family (the Baugh & Dunn crew) for being there to help trim and show.

WHAT IS YOUR FAVORITE SPORTS TEAM?

Whoever Kasey is coaching and the St. Louis Cardinals

WHAT IS YOUR FAVORITE FOOD?

Steak, pizza, and corn on the cob.

WHAT IS THE TOP ITEM ON YOUR BUCKET LIST?

Watch Kasey coach in the Final Four.

WHAT IS THE FAVORITE PLACE YOU HAVE VISITED?

Missouri State Fair (better than Christmas)



MARSHALL

Sheep Company



Golden Lane 1930

**Reserve Champion
Hampshire Ewe**

2020 SOUTH DAKOTA STATE FAIR

Thank you to Golden Lane Farms
for making this ewe available in the
2020 AHSA online sale. We can't
wait to see what she does in the
lambing barn!



"Kasey"

BM WM 022

Yellowstone BMWM 8-95 x L&L 204

2nd January Ewe • Save the Summer Show

2nd January Ewe • 2020 SDSF

Congratulations, Houghtaing Family!

1st Place February Ewe • 2020 SDSF

Sired by BM WM 506 "Fred"

Arlington, South Dakota • Barret, Kristin, Wyatt & Emery

PHONE 605-695-2528 EMAIL barretmarshall@hotmail.com

Call to the 131st Annual Meeting of the American Hampshire Sheep Association

The 131st Annual Meeting of the American Hampshire Sheep Association is hereby called to meet Sunday, November 22, 2020 – 6:00pm – by zoom and conference. Watch your email for the exact weblink.

The Purpose of the Annual Meeting will be to elect Directors from Districts 2, and 6 as well as one At-Large Director and to transact any other business which may come before the Association. Election of Officers (President, Vice President, and Executive Committee) shall be made by the Board of Directors, following the Annual Meeting. These newly elected officers and the Executive Committee shall serve for one year, or until the next Annual Meeting.

A Ballot will be mailed to you for your convenience, should you be unable to attend in person, as set forth in Article XVI of the constitution. Exercise your rights and take advantage of the ballot to fulfill your responsibility as a member of the AHSA. Please follow the instructions on the ballot so your vote will be valid. Ballots must be postmarked by November 13th.

Directors Whose Terms Expire:

District 2: Jason Simpson, CO (served 2 terms, eligible for re-election)

District 6: Debbie Deal, OH (served 3 terms, ineligible for re-election)

At-Large: Jason Mumm, IL (served 1 term, eligible for re-election)

Only Senior/Active Members residing in the districts up for election may vote for a Director in their District.

All Senior/Active Members may vote for the At-Large Director. An active member is defined as a member of the AHSA who has paid dues in the last 24 months.

Minutes of the Annual Meeting will be mailed upon request only.

Annual Meeting will be held on Sunday, November 22, 2020 at 6:00pm – via zoom and conference call. Watch your email for the weblink for the meeting.

North American International Livestock Exposition Schedule of Hampshire Events:

Junior Market Lamb Showmanship – Friday, November 13th 8:00 AM

Junior Breeding Sheep Showmanship – Friday, November 13th 9:00 AM

Lead Line Contest – Friday, November 13th 5:00 PM

National Junior Hampshire Wether Show – Saturday, November 14th 8:00 AM

National Junior Hampshire Show – Saturday, November 14th 8:00 AM

National Hampshire Show – Tuesday, November 17th – 8:00 AM

Respectfully,

Jeff Ebert, Executive Secretary

At this year's South Dakota Jr. Hampshire Show we had 17 participants aging from 7-20 showing 48 head of registered sheep in 10 different classes. We had great participation in our showmanship classes and 13 teams enter our Partner Showmanship Class. This is a class where we have an adult and a youth participate together in a showmanship class for the youth to practice showing in the ring when sometimes adults take the lead.

We appreciate our many sponsors and would like to extend our thank you to Ketchum Sheep Equipment for the Grand Champion and Reserve Champion prizes, Wayne Fuller for the homemade halters for each participant, and to Jan Houghtaling for the blankets and hoods for the Showmanship winners.

Respectfully Submitted,

Kelsey (Houghtaling) Schnetzer
South Dakota Jr Show Coordinator



ABOUT OUR MAGAZINE DESIGNER

Morgan Huelsman has been designing and putting together each issue of the Hampshire Heartbeat for the last several years since she was in college at Kansas State University. She studied Broadcast Journalism with an emphasis in Digital Media. Her career brought her to Nashville, Tennessee where she now works as the Digital Director for The Bobby Bones Show. Listeners of the show know her as "Morgan 2." She works on the show mainly overseeing the show's social media and website content with some on-air segments.



Morgan is originally from Wichita, Kansas and grew up loving country music. Her job has brought her into the company of country stars like Dolly Parton, Reba McEntire, Brooks & Dunn, Carrie Underwood, Thomas Rhett, and several others. She's been working with the show for four years and plans to stay in Nashville, Tennessee. She hopes one day to meet all of the individuals she's gotten to work with and talk to during her time designing the Hampshire Heartbeat.

NELSON *Hampshires*

These two were in the AHSA Online Sale, which was a huge success!
We had the top selling ewe and ram. Thank you to all the folks who supported our entries!
Best of luck to the Niemeier Family and the Benker Family on their purchases &
thank you to all of our private sales.



These two are the yearling ewe and January ram (Alf), they were hopeful entries for Louisville, but we decided to breed due to uncertainty of show.
Should have a strong set of sheep for next years shows and sales!



Rodney & Kathy Nelson
13329 WCR 74 Eaton, CO 80615

R: 970-481-9837 | K: 970-481-0861 | Nelsheep1@what-wire.com

Highland Hampshires

We're Putting 2020 in the Rearview Mirror,
and Looking Forward to the Future of These
Exciting Prospects!



Klug HH 20-222

- * 1st Jan—Save the Summer Jr. Show
Junior Champion
- * 1st Jan—Save the Summer Open Show
- 1st Jan - South Dakota State Fair



:Limestone 19-31

"Lolita"



Klug HH 20-226

- * 1st Feb - Save the Summer Jr. Show
- * 4th Feb - Save the Summer Open Show
- * 2nd Feb - South Dakota State Fair
Open and Junior Show

Gary T. Klug
939 Hazel Rd.
Harlan, IA 51537
(712)202-4461
klughhamp@tm.net



Lynn K. Lee—Flock Emissary

Ryan Bingen—Aesthetics Engineer

Dylan R. Klug
1033 1st Ave. Grafton, WI
dklug2001@gmail.com

KLEINERT HAMPSHIRE

"Quality Breeding Lasts Forever"

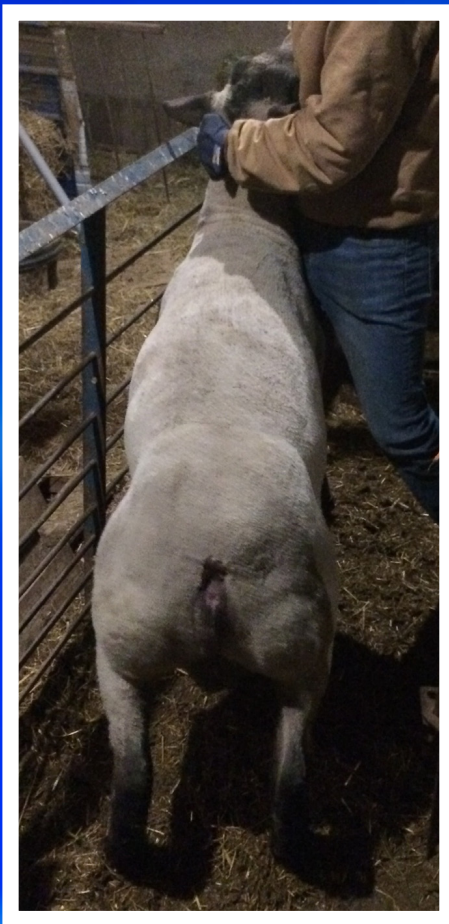
KLEINERT 5236

(KLEINERT 5113 X KLEINERT 4549)



KLEINERT 5113

(MILLER 0-470 X KLEINERT 4805)



KLEINERT 5340

TALKING TRASH X KLEINERT 5196

(MILLER 470) X KLEINERT 4593)



Lead Sires For 2021

MIKE KLEINERT | KLEINERT HAMPSHIRE

2873 N 1600 EAST RD. | CLIFTON, IL 60297

CALL OR TEXT: 815.383.0962 | KLEINERTHAMPSHIRE@YAHOO.COM | WWW.KLEINERTHAMPS.COM

The Absence Of Overt Disease In The Pre-Lambing Ewe Does Not Equate To Good Health In The Fetus

Dr. Maggie Highland

Maggie is a DVM and board-certified anatomic pathologist and has a Ph.D. in Infectious Diseases and Immunology. Maggie earned her DVM at UW-Madison, WI in 2006 and received 2 years of anatomic pathology training at UC-Davis. This was followed by a 2-year training fellowship in zoo and wildlife pathology at UW-Madison in conjunction with the Milwaukee County Zoo. In 2016, Maggie completed her PhD at Washington State University as a PhD Student Trainee with the USDA-ARS-Animal Disease Research Unit in Pullman, WA. She then served as a Veterinary Medical Officer at the Animal Disease Research Unit for just over 3 years as a small ruminant infectious disease researcher. In August of 2019, Maggie moved to Manhattan, KS to start her current position as an Assistant Professor at Kansas State University-Department of Diagnostic Medicine/ Pathobiology and Anatomic Pathologist at the Kansas State Veterinary Diagnostic Laboratory (KSVDL).

Her contact information and additional career/research information can be found at: <https://www.vet.k-state.edu/academics/dmp/faculty-staff/faculty/highland/index.html>



Since beginning my career as an anatomic pathologist and diagnostician at KSVDL in late summer 2019, I have been surprised, and frustrated, by the number of abortions and neonatal deaths I've seen in agricultural animals that have no identified birth defects, no identified infectious cause, and no histopathologic (microscopic) findings to explain the death. These cases are often late term abortions, or neonatal deaths that occur within minutes to several days following birth, referred to as "failure to thrive" cases. Cases in which the neonate dies very shortly after birth are often misinterpreted to be late term abortions. Gross evaluation of the lungs can sometimes reveal evidence that the lungs are at least partially inflated/aerated in these neonatal death cases, however sometimes histopathologic evaluation of the lung tissue is required to see that the small air spaces within the lungs (alveoli) are open, or aerated, to at least some degree, indicating a live birth.

In conversation with Dr. Steve Ensley, a clinical veterinary toxicologist and Section Head of the KSVDL Toxicology Laboratory, he expressed concern about micronutrient deficiencies, particularly vitamin A, vitamin E, and trace minerals in these otherwise unexplained abortions and failure to thrive cases. Since all fetal vitamins and minerals must come from the dam, this indicates a micronutrient deficiency in the dam.

Seems a difficult concept to grasp, that apparently healthy, non-repeat breeders can have micronutrient deficiencies that impact fetal development and survivability of their offspring. However, it seems that all too often in these cases, Dr. Ensley's concern is justified as quantitative analysis of fetal liver tissue reveals a vitamin deficiency and/or mineral deficiency. Before getting to the point of analyzing the micronutrient content in liver from an aborted fetus or dead neonate, preventative steps can be taken. Micronutrient levels in blood from the dam and/or feed can be quantitatively analyzed and appropriate supplementation, as needed, can be implemented. This micronutrient surveillance should be performed pre-breeding or at the latest in early in gestation.

To diagnose the cause of abortion or early neonatal death, with a goal of preventing further losses, field samples can be collected and sent to a diagnostic laboratory for testing. When possible, sending the whole carcass, along with the placenta, for gross evaluation and sample collection is recommended and perhaps feasible considering the relatively small size of a near term, term, or neonatal lamb. To improve diagnostic outcome, collected samples or the whole carcass with placenta should be sent chilled (not frozen) and arrive to the diagnostic laboratory as soon as possible for evaluation and testing. Along with the tissue/carcass/placenta, providing a thorough herd history (flock size, recent additions to the flock, previous or other recent losses, recent herd health issues, housing/environment, feed, supplementation, etc.) is useful information for the veterinary pathologist/diagnostician that receives the case. Histopathology, culture, and molecular diagnostics are valuable first steps in identifying infectious causes of abortion/death. KSVDL currently offers a Small Ruminant Abortion Tissue PCR panel that tests for the following infectious disease agents: *Coxiella burnetii*, *Toxoplasma gondii*, *Chlamydia abortus*, Cache Valley virus, and border disease virus. In addition to standard aerobic culture, the Ruminant Abortion Bacteria Culture Panel is designed to include of *Campylobacter*. In cases with no indication or detection of an infectious cause, micronutrient analysis is considered a valid next step.

KSVDL encourages the producer/owner to involve their local veterinary practitioner in topics that impact health and wellbeing of the flock or individual animal, whether the topic is infectious diseases or general husbandry, including nutrition.

A complete list of samples that are requested for the best diagnostic workup (should samples rather than full carcass be sent), and shipping instructions, can be found online at: <http://www.ksvdl.org/docs/resources/Abortion-Ovine-Caprine.pdf>

Information on appropriate samples to submit for micronutrient screening in flocks (feed and/or blood) can be found on the KSVDL website (ksvdl.org) by clicking on Tests & Fees and searching "mineral" or "vitamin". This site also provides a list of specific minerals that are analyzed.

Clients (owners/veterinarians) are also always welcome to contact KSVDL by phone (785-532-5650) or email (clientcare@vet.k-state.edu) with any questions.

Hampshire Downs in the United Kingdom



In 1889, when the Hampshire Down Flockbook was founded in the UK it was all about early lambs and wool production. 131 years later so much has changed in the world and the industry. Consumer demand for products have changed as well as the introduction of continental systems and breeding have had a big impact on the Hampshire breed and all the native breeds.

When the UK joined Europe in the early 1970s the EUROP grading system was introduced with the aim of standardising lamb grading across the continent, but this system did not suit any of the native breeds. The emphasis is very much on big back ends and shape which lends itself to breeds like Charollais or Texel however the Hampshire meat yield has always been good but not necessarily reflected on the scale. Lack of education to the UK population about quality food and cooking and a drive by supermarkets for quantity

over quality has also had a negative effect on native lamb sales. Wool has also taken a major hit with synthetic fibres cheaper to make and more saleable.

However, we believe the tide is now turning. These continental sheep are less hardy - they do not have the wool to help them survive and thrive in all manner of environments, take more grain feeding and are significantly slower at finishing. Many parts of the UK are moorland or hill ground and need a very specific type of sheep to graze them and an easy lambing Hampshire can cross well with these breeds. Studies here in the UK have proved that Hampshire lambs finish faster than most other breeds and can be fit for slaughter at 12 – 16 weeks off mothers' milk. Hampshires can lamb early and whilst the big prices are not quite what they were for Easter lambs, the idea of lambs moving off the farm quicker is proving to be a good selling point for the breed with commercial farmers. Genetic progress has meant that we can stand in with the continentals in terms of good grades with studies proving the loin yield and meat yield are on a par with these breeds. Performance recording has helped to improve our breeds productivity, getting leaner and longer carcasses without losing the characteristics of the breed. With our subsidies for food production being phased out through the next few years and payments being made for environmental projects, sheep producers will be looking at low input systems to make more profit and the Hampshire breed can play a major part in this.

Another key factor that is helping sell the Hampshire Down is the taste of the meat with the intramuscular fat it has. Many farmers have diversified into selling their products direct to customers through farm shops and the taste of Hampshire lambs are making the breed a favourite with discerning customers. The Covid-19 pandemic has made our countryside residents more aware of shopping local along with the environmental concerns, these customers are looking at food miles too and what could be better than buying meat from the farm that it has been raised on?

Wool seems to be a very 'out of fashion' product at the moment which is strange considering the UK population is very concerned by environmental and welfare issues. Wool is probably the most green and sustainable product out there and hopefully our wool board will get that message across that a wool carpet or clothing is harder wearing than synthetic fibre and green to produce.

The Hampshire Down as a pedigree breed is having a massive resurgence in the last few years with 368 Members of the Association with about 11,500 ewes in the flock book. The majority of our breeders however have less than 12 ewes with many people having a few acres of ground for a small holder lifestyle and the bigger flocks are in the minority. Education has become a key part of our Association's activities with many breeders not coming from a farming background. The breed is no stranger to success in the show ring which is a great advert and our numbers at shows are testament to the popularity of our pedigree breed. Our Association is very forward thinking and continually looking at ways to innovate and improve the popularity of the breed.



The American Lamb Board Hosts Virtual Dining Experience

This month, the American Lamb Board (ALB) is hosting virtual American Lamb dinner parties for Seattle and Austin influencers. The Seattle event will be hosted by chef Holly Smith of Café Juanita and Travis and Reed Anderson of Anderson Ranches in Brownsville, OR. Chef Michael Fojtasek of Olamaie in Austin, Texas will be hosting the Austin event with Alan McAnelly of Capra Lamb in Goldthwaite, TX.

The virtual dinner parties are in lieu of face to face events and are designed to share the American Lamb story with food influencers – our story from shepherd to chef. This virtual dinner parties will bring together notable food bloggers, media and food critics in an immersive and informative event to celebrate American Lamb and its rich connections in the Pacific Northwest and Austin, Texas markets.

In advance of the virtual dinner party, guests received a link to the new ALB video and a gift bag with the printed American Lamb story narrative, cooking tips and nutrition information, American wool dryer balls and sheep's milk caramel sauce – highlighting the many aspects and contributions of the sheep industry.

The participating influencers will be treated to a custom multi-course American Lamb dinner kit prepared by the local chef including hors d'oeuvres to enjoy during the virtual gathering. The chefs will talk to guests about their dishes including the lamb cuts, cooking method and wine pairings and the shepherds will talk about their operations and local lamb.

These events promise to generate interesting conversations about American Lamb and delicious food!

CHAPIN HAMPS

Bill & Carole, Derek, Laura,
Clive & Quincy
Coal City, IL 60416
(815) 954-5129 chapinhamps@gmail.com

Cut out for NAILE 2020 ?

Who Knows ?
Hope to see you there



Three of these 2020
January and February Rams
All Available for Purchase



6 of the 8 2019 Fall and 2020 Winter
Ewe Lambs
Most Available for Purchase



This is a
Special
Fall 2019
Ewe

Sure
Hope you
see her at
NAILE

Sound, Honest, Complete & Consistent
Hampshire Sheep

Size, Thickness, Bone & Beauty

“Easy Keepers” that will work in any flock –
ESPECIALLY YOURS!

Featuring Heeg Family



INTRODUCE YOURSELF & YOUR FAMILY

We are Heeg's Crazy H Club Lambs from the beautiful "Big Skies" of Shepherd Montana. Our small family business consists of myself Jason Heeg, my wife Denise and our growing children Dash (12) and Myka (7).

GIVE US A BRIEF DESCRIPTION OF YOUR HAMPSHIRE FLOCK

We run a three breed operation focusing on wether type and slick shear/range type breeding stock. Currently we run around 60 head of registered Hampshire ewes along with registered Shropshires (Dash) and registered Dorsets (Myka) and a few Crossbred wether dams. We produce market lambs for the youth show industry with a special focus on producing high quality seedstock for other producers.

WHY DID YOU CHOOSE TO INCLUDE REGISTERED HAMPSHIRE IN YOUR SHEEP OPERATION?

We were fortunate that when we got back into the sheep industry the Hampshire breed was just starting to take off as the dominant breed in the show lamb scene. As we started gathering our flock, we tried to use registered stock to build our base, as it better suited our goals for sales and the showing.

WHAT ADVICE DO YOU HAVE FOR PEOPLE STARTING OUT IN THE SHEEP BUSINESS?

Find what you like! Not all sheep need to be the same, find the type that you are happy raising and feeding. That is one of the bonuses of the Hampshire breed, with three distinct "types" that are given equal weight in the showing, anyone should be able to find one that best suits their goals. Try to put a picture in your head of what your ideal animal looks like and use that as your measuring guide. Don't worry if that isn't the trendy one, good sheep always have a place and a buyer.

WHAT ARE ONE OR TWO ITEMS THAT YOU HAVE FOUND TO BE CRITICAL FOR THE SUCCESS OF YOUR SHEEP OPERATION?

Two major items that have kept our operation going and thriving over the years has been the support and effort of the whole family unit. If I wasn't able to rely on my wife and family to support me physically and emotionally when times get tough, we would have had to quit in November of 2018 if not before. If you don't have the support of your family and/or employees it will be a difficult to be successful at any level. The effort you put in will directly relate to the success you obtain. Be stubborn and remember that it's not work if you enjoy it.

WHO ARE SOME PEOPLE THAT YOU CREDIT FOR YOUR SUCCESS WITH HAMPSHIRE?

The people that influenced my success within the Hampshire breed is very eclectic and have been gathered from through out the sheep industry over time. From people like my dad (Skip Heeg) and all those I grew up learning from like; Dave Harmann, Rod Crome, Buster Wilson, Kevin Kuykendall, Don Grant, Neil Taylor and a whole slew of others that taught me how to make fundamentally good sheep and develop the type I like. And those that have influenced my Hampshires genetically like Jim Miller, Riley Cabaniss, Leland Wheaton, and Mike Kleinert who have supplied us with the pieces that make our sheep what they are.

WHAT IS YOUR FAVORITE SPORTS TEAM?

The University of Wyoming, good years and bad they are always entertaining. Go Pokes!!!

WHAT IS YOUR FAVORITE FOOD?

Lamb Roast or Ribeye Steak, definitely red meat.

WHAT IS THE TOP ITEM ON YOUR BUCKET LIST?

Get healthy again so I can spend more time with my family, including my sheep family.

WHAT IS THE FAVORITE PLACE YOU HAVE VISITED?

All American Junior Sheep Show, with my family and friends.



YOUTH CONNECTION

When asked to write articles for the Hampshire Youth Connection, I tried to recall what motivated me at a young age. The memory of representatives from a large dairy semen supply company came to our farm and evaluated each cow individually and suggested a list of bulls to breed them to. They called it mapping the herd, and they scored each cow on multiple traits. Like feet and legs, udder design and dairy character. It was from that point, I wanted to learn more. All through 4H, FFA and College judging livestock was my main focus. I knew the future dream of my own herd was sure to depend on it.

We are always learning and the best example of what an animal should look like is provided by nature. Its survival of the fittest, the weak or crippled are first to go. By studying wild deer, big horn sheep and others you start to get a pattern of functionality. Sheep are a ruminant, which means their stomach has four compartments and designed to eat grass and other forages. In most areas of the country that requires walking a fair distance to obtain their daily intake. They need to be sound and functional in skeletal makeup to accomplish this.

Study sheep on the move walking about the pen. I look for one that's fluid in motion. I believe a ewe or ram should be able to move about staying level in its top line. A sheep's neck should be long and attach on the top of the shoulder. Their feet need good base width but not to the point that it walks outside of its own structure. From a side view, the angle of shoulder and pastern will be similar. This angle provides cushion and flex to the animal's skeleton. A strait shouldered one will be post legged and stiff in movement. Where as too much angle will leave the du claw touching the ground and a leg structure with difficulty moving. By watching sheep walk and file by you will start to see the differences.

When studying the rear view, look for individuals that are A or V shaped getting wider to the hip. I prefer sheep to be in short fleece to evaluate. Wool never grows uniformly in length over the whole animal making it harder to see true shape. The muscle expression and fat cover will be more evident while slick sheared. I still recommend using your hands to feel the width and depth of loin and to measure the length of hind saddle. The size of leg can be seen easily, but the fullness can be handled to be more accurate when comparing differences between individuals.

Look for balanced sheep that have natural base width. Balance is determined by divided the animal in half with an imaginary line from top of shoulder to flank. The halves should be equal in body mass to be a balanced sheep. Choose those round and opened up in their chest floor. They need depth of rear flank to provide adequate capacity for consumption and or carrying twins in ewes. A nice wide pin set with a drop from hooks to pins can help prevent lambing problems by providing a bigger pelvic opening.

I have provided some diagrams that point out many parts of the sheep. The examples give directions on what you need to look for. Practice judging by going to contests with your 4-H or FFA teacher. In the end it's your opinion that matters most.

SELECTION IN YOUR FLOCK

One of the most important elements of any successful livestock program is the selection of seed stock. Knowing the difference between sound or lame, fat or muscle, and wool or bone is critical. Let's start with getting you the basics you need to correctly judge the differences in an individual animal.

Often I have heard a Judge refer to an animal as the best and needs to start this class. Words like best, great, cool, and fancy do little to help the listener know what they truly mean. I feel that too many evaluators and judges are more worried about sounding good than truly explaining the animal. I know that maybe taken as being negative, but not intended, I want to encourage you to study the animals make up on your own mind. Draw your own conclusions and study the differences between each animal.

While learning how to judge the soundness of a sheep, I advise starting at the ground and work up. For instance what is the sheep foot size, are their toes of equal size, do they point forward or turn out, how much depth of heel is on their hoof? What is the angle of the ankle? Is the front leg strait and knee centered? From the side is the knee forward, centered, or bent backward? Is the hock strait or sickled? When viewed from the rear is the hock bent inward, strait, or out and wobbles?

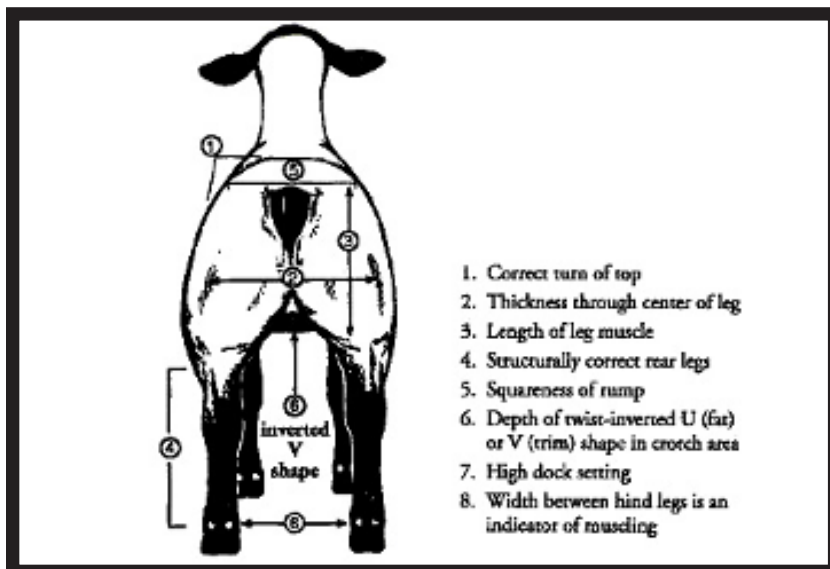
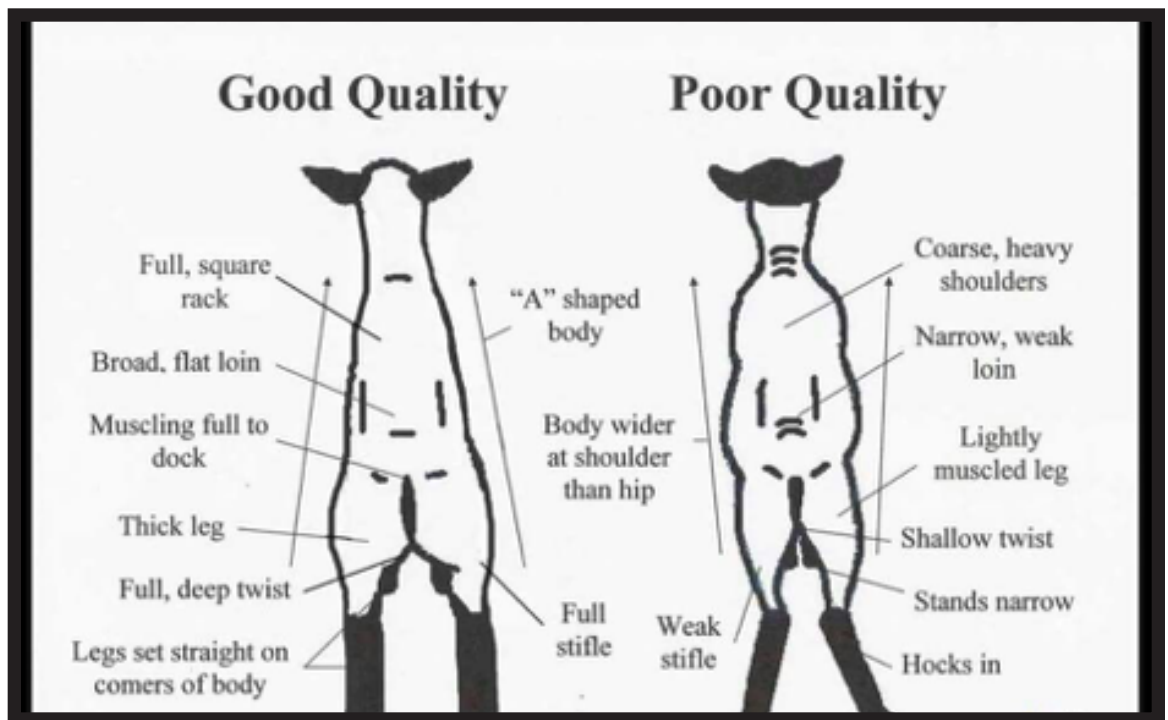
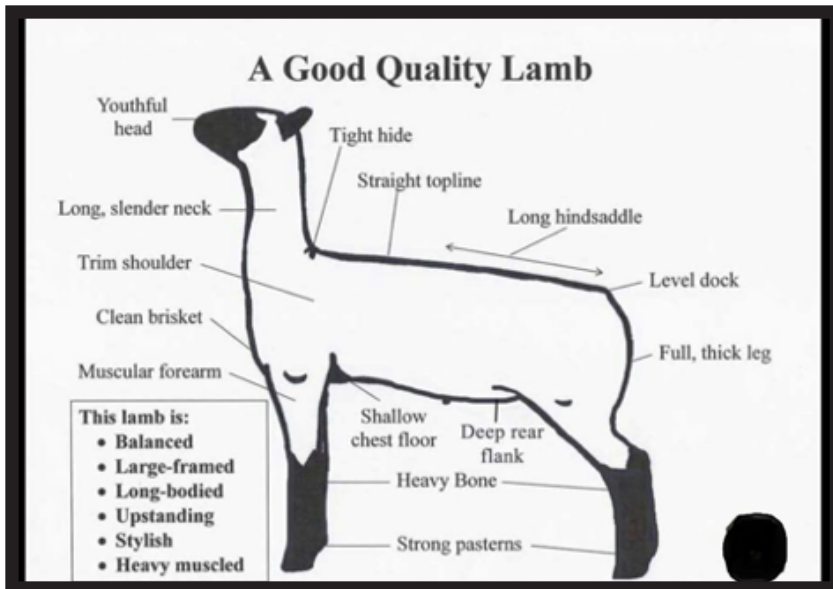
As you can tell from the last paragraph, we have just got up to the hock and there is so much to look at and study. Also keep in mind there is no perfect animal and not one particular design is the best for everyone. So the fact, there is almost as many opinions as there are animals to fit them is true. I have included some illustrations that are meant to help you better understand muscle, structure, and fat cover.

Sheep are a lot easier to determine strengths and flaws when they are slick shorn. Unless you are trying to evaluate the quality of their wool. It also helps to use your hands to feel and measure the sheep. Learning to handle a sheep takes practice, and is done to estimate width of rack, loin and hip. You can also handle the depth of loin and fullness of leg muscle. Touching them over their ribs and spine can help determine the amount of fat cover with some practice. To measure the length of hind saddle use your index finger and thumb to span the distance between the last rib and hip loin junction.

As you study the differences between individuals you can select those with the attributes you prefer. In selection certain traits are more highly heritable, like muscle and bone size. While other traits seem to take several generations to improve or change like wool pelt or reproductive efficiency. This maybe a good time to warn you about single trait selection. Even though you can make fast changes it usually comes at a cost of giving up on improvements in another trait. Good luck as you learn and study the selection process.

Have a blessed day.

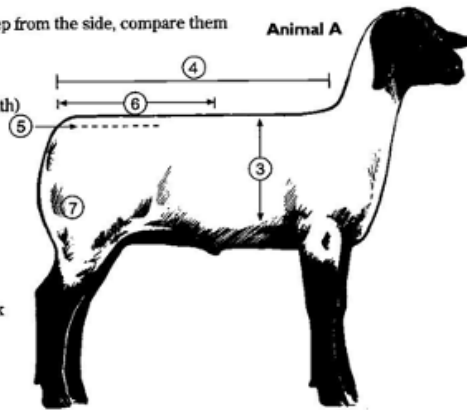
Ed Hewlett



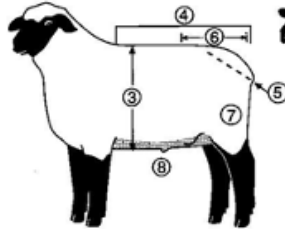
Side View

When you view the class of sheep from the side, compare them for:

1. Balance
2. Size and scale (Height, Length and Width)
3. Depth of body
4. Length of body
5. Levelness of rump
6. Length of hindsaddle
7. Depth and fullness of leg
8. Trimness of middle (market lamb)
9. Correctness of feet, legs and pasterns
10. Length of head and neck
11. Trimness of breast



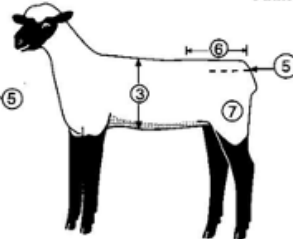
Animal B



Animal B is shorter bodied and too fat.

- Excessive depth of body - 3
- Shorter bodied - 4
- Steep rumped - 5
- Shorter hindsaddle - 6
- Is light muscled & fat through leg - 7
- Wasty middled - 8

Animal C



Animal C is tall, long bodied and trim but lacks balance, thickness and muscle.

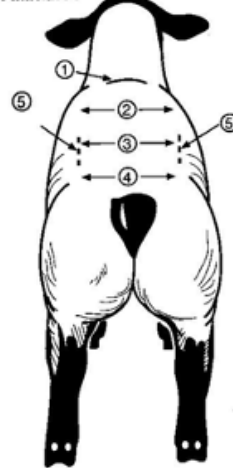
- Shallow bodied - 3
- Shorter rumped - 5
- Shorter hindsaddle - 6
- Flat, narrow, shallow leg that is light muscled - 7

Top View

When you view lambs (up close) from the top view, compare them for:

1. Soundness of shoulder
2. Rib cage capacity
3. Width of loin
4. Thickness across rump
5. Leanness over loin edge
6. Shape of top - Look for the "coke bottle" shape. A slim clean neck that blends into muscular shoulders. A heavy muscled lean lamb should be wider on the ends than in the middle.

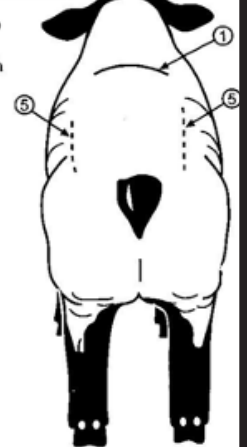
Animal A



Animal A is a trim, heavy muscled animal

- smooth shouldered - 1
- more spring of rib - 2
- wider loin - 3
- wider rump - 4
- lean over loin edge - 5

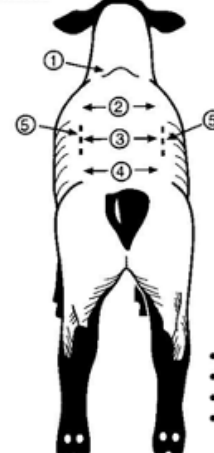
Animal B



Animal B is a very fat lamb that is light muscled.

- Heavy and coarse through shoulders - 1
- Shape of top is "square" because animal is very fat over loin edge - 5

Animal C



Animal C is narrow made and light muscled.

- Narrow in rib - 2
- Narrow over loin - 3
- Narrow rumped - 4
- Is narrow in top shape because is light muscled

Featuring Sidney McAllister

Introduce yourself & your family.

My name is Sidney McAllister from West Manchester, Ohio. My parents are Doug and Tina McAllister. I graduated from Arcanum Butler High School in 2019, and I am now a sophomore majoring in Animal Biosciences at The Ohio State University ATI.

Number of Hampshire in your flock.

I currently have 23 Hampshires in my flock.

Favorite show you have attended and why?

My favorite show I have attended is the Ohio State Fair because it's in our home state so all of our show friends and family are there, and it's great to just spend an entire week showing together.

What do you like about Hampshires?

My favorite thing about the Hampshire breed is that they are a very versatile and hardy breed and they have lots of personality.

What is your fondest sheep memory?

My fondest sheep memory is probably when my first registered Hampshire lamb was born. I was so excited because that sheep was the start of my personal flock and lambing season is my favorite time of year.

Future plans and goals.

My future plans are to graduate from The Ohio State University with a doctorate's degree in Animal Biosciences, so that I can become a travelling livestock geneticist.

Advice you would like to share with junior Hampshire members.

My advice for junior Hampshire members is to learn as much about the breed as you can and to have as much fun and make as many friends as possible.

Favorite Food? Italian.

Favorite Activity Away From Sheep? Kayaking.

What would be your ultimate vacation? My ultimate vacation would be going to Scotland to watch the sheep dog herding trials.

What is a fun fact about yourself? When I'm not showing I spend my summer traveling the US and teaching with Champions Choice Camps..



Held's Hampshires

AURORA, SD 57002
JEFF | MARY | AUSTIN | AARON
CELL (JEFF): 605.690.7033

HELDHAMPSHIRE.COM | HELDHAMPS@GMAIL.COM



HELD 19-4001 NNP RR

Fall Ewe Lamb
Undeclared Fall Ewe - Spencer IA
and SD State Fair shows
Member of 1st pr of ewe lambs
and Champion Flock at Spencer
Sired by Niemeier 818



HELD 20-4060 NNP RR

Our top January ewe lamb that
placed 2nd at Spencer, IA.
Sired by Niemeier 818.

HELD 19-4018 NNP RR

Fall Ram Lamb
Judy Moore MI selected this
powerful ram off the farm this
summer. Sired by Held 18-2016,
a son of Held 17-1912 who was
Champion Ram at IA state fair
in 2017 then later served in the
Pullin Hampshire flock at stud
(known as "Razz.")



HELD 19-4038 NNP RR

Fall Ram Lamb
Another top end fall ram lamb
by Niemeier 818 sold to Hand
Hampshires MO this summer.
Thanks to the Hand family for
selecting this stud and adding
a pair of outstanding fall ewe
lambs too!

HELD 19-4042 NNP RR QUAD

Fall Ram Lamb
Undeclared Fall Ram - Spencer
IA and SD State Fair shows
Sired by Niemeier 818



NIEMEIER 818

Our elite senior stud ram!

Our 2020 fall lamb crop should arrive by early October with more than 20 stud ewes bred to Niemeier 818 or his top son Held 19-4035.

Thank you to the breeders that added Held's Hampshire genetics to their flock this year!
All of us hope that a full slate of sheep activities will return in 2021!!!!

CONSISTENT GENETICS CONSISTENT RESULTS

55 YEARS OF BREEDING HAMPSHIRE THAT ARE:

**BIG FRAMED ★ FAST GROWING ★ MASSIVE MADE
STRUCTURALLY CORRECT ★ SOUND MOVING
EASY KEEPING ★ LONGEVITY ★ EASY LAMBING
EYE APPEALING STYLE ★ BREED CHARACTER**

2021 LAMB CROP WILL BE Sired BY



FEARLESS
CASKEY 8569



ENCORE
CASKEY 7568



CONTENDER
CASKEY 7636



BIG
RIKOW 9060



RICH
RIKOW 9062



HEADS UP
CASKEY A026

**45TH ANNUAL NORTH STAR BRED EWE SALE, OCT 31, 2020 - PIPESTONE, MN
CHECK OUR WEBSITE FOR CONSIGNMENT INFORMATION**

**MIKE, CARRIE, JASON & KYLE CASKEY
1222 171ST ST. HOLLAND, MN 56139**

PH: 507.347.3229 | CELL: 507.215.0266

MCCASKEY@WOODSTOCKTEL.NET | WWW.CASKEYPINELAWNFARMS.COM



HAMPSHIRE HERITAGE HONORS RECOGNITION APPLICATION

The American Hampshire Sheep Association is honoring long-time Hampshire breeders.
In many cases this will involve multiple generations within a family.
Please complete the form below and return to the AHSA office by October 25th.

- Heritage Honors Rules and Info:
1. Must be families continuously raising Hampshires.
 2. Must apply by October 25th of each year.
 3. Awards will be given at the AHSA virtual annual meeting on November 22nd.
 4. Applicants must provide proof of when the Hampshire flock was established.
 5. Applicants must be current Senior or Junior members of the AHSA.

Name: _____ Farm Name: _____

Address: _____ City: _____ State: _____ Zip: _____

Phone: _____ Email: _____

What is the Name on your AHSA Membership: _____
(if different from your own name, i.e. farm name, joint owners, etc)

How long have you been continuously raising Hampshires: *(mark box that applies to your highest number of years)*

- | | | | | |
|-----------------------------------|-----------------------------------|-----------------------------------|---|-----------------------------------|
| <input type="checkbox"/> 5 years | <input type="checkbox"/> 10 years | <input type="checkbox"/> 20 years | <input type="checkbox"/> 30 years | <input type="checkbox"/> 40 years |
| <input type="checkbox"/> 50 years | <input type="checkbox"/> 60 years | <input type="checkbox"/> 70 years | <input type="checkbox"/> 80 years or more | |

Please include a write-up with the following information included:

When/Where did you first start with sheep? and how did you acquire them?

Who was responsible for encouraging you to start breeding Hampshires?

How many previous generations in your family have raised Hampshires?

If any, please list names, dates started and location of flock.

How many current generations are involved with Hampshires?

If any, please list names, dates started and type of involvement.

Have you or your family received any significant Local, State, Regional or National awards or recognitions within the sheep industry?

Have any animals from your flock earned Champion honors at the Local, State, Regional or National levels?

How have you supported the AHSA and the sheep industry?

What is your involvement with the sheep industry today? and what is the current state of your Flock?

Please send along no more than 20 items: photos, old registration papers, or other documents authenticating the existence of a Hampshire flock owned by your family?

Please provide captions for each photo/item.

Make sure to return your application to the AHSA Office by October 25th!

AWARDS WILL BE GIVEN AT THE AHSA VIRTUAL ANNUAL MEETING ON NOVEMBER 22ND...

SO MAKE PLANS TO ATTEND THE VIRTUAL MEETING. THE AWARDS WILL BE MAILED TO YOU AFTERWARD.

THE JUNIOR CORNER

The uncertainties that have come with the year 2020 have been devastating. At the start of the year, I began to worry about the possibility of not having my final year in 4-H, along with every other graduating 4-H member. I had to continue reminding myself that I still had a few years left to attend junior shows and that it was all going to be okay.

Junior Board

President -
Morgan Hauger, IN

Vice President -
Campbell Coyle, KY

Secretary/Treasurer -
Danielle Houghtaling, SD

Board Members:

Jenna Sullivan, CT

Amanda King, CA

Faith Houghtaling, SD

Grace Powell, TN

Taylor O'Brien, KS

Haleigh O'Brien, KS

This past week, my family and I were driving up for the final day of the Indiana State Fair. We were talking about the graduating members entering the ring for the final time this weekend as 4-Hers. We began discussing who the next generation was moving up to fill those spots. After going through and naming a few of the younger upcoming members, I began to think about how our industry will forever stay strong and going.

Every curveball thrown our way this year has not stopped us from continuing doing what we love. All ages in this industry have joined forces to allow our youth to exhibit their projects. I can not be more proud to be a part of such a wonderful industry that will work together for a common goal!

As a leader, I strive to make it my goal to leave a legacy that can be continued on to someone else to go make a difference. I believe that is what we have done this year. Every young member in the sheep industry has been to witness what it means to have a passion like we do for our livestock.

These little ones run around at shows having fun with family and friends and have a blast, but what some don't see is that they observe every move the older exhibitors make. For me, this is a huge part of showing sheep and being a leader. I know that there's always someone watching my every move wanting to be just like me. And I take pride in that. I am fortunate enough to have some very special little ones who look up to me and what I do.

With the possibility of not having a final 4-H show season, I knew that no matter what, I had to be a positive example for the next generation watching.

**Don't forget to follow
the American Junior
Hampshire Sheep
Association Facebook
Page!**

IMPORTANT REMINDERS

- Junior Dues: \$15.00 Senior Dues: \$25.00
- Junior Member until they exceed their 21st Birthday on January 1st
- New Junior Board Members will be elected at Louisville
- We want to recognize you!! Make sure to complete a Member Monday form so that we can recognize you on Facebook.

On that final drive to my state fair, I was able to realize that no matter how I left the ring, I knew that there were some awesome showmen coming up that would fill my place and continue to make the sheep industry one of the best places to be!

Sincerely,
Morgan Hauger
AJHSA Junior Board President



THEY ROCKED IT!

ISABELLA



Isabella won Yearling Ewe Class C at the Midwest Save the Summer Show, and she and Olivia teamed up to capture first pair of Yearling Ewes. She is a great granddaughter to our Herring ewe and is out of "Apollo," the very popular ram in our 2018 and 2019 show flocks.

OLIVIA



Olivia was Overall Champion Hampshire Ewe at the Midwest Save the Summer Show and won Yearling Ewe Class B. She is out of the Herring ewe that was Champion Hampshire Ewe at the 2011 National Hampshire Sale. Boy, did she hit it big with her last lamb! Olivia's sire is Held 15-1656 that also left an incredible legacy in our flock.

2020 MIDWEST SAVE THE SUMMER SHOW

Overall Champion Ewe - Champion Fitted Ewe
1st Place Fitted Yearling Ewe: Classes B & C
1st Place Pair Of Fitted Yearling Ewes
2nd place Slick Yearling Ewe - Reserve Champion Slick Ewe
2nd Place Fitted February Ewe Lamb

MOANA



These February ewe lambs rose to the top of a great set of ewe lambs this spring! Moana was 2nd in February Ewe Lamb Class A at the Midwest Save the Summer Show, and Mulan was 6th in Class B. Both lambs are sired by "Apollo." Watch for them in our 2021 show flock!

MULAN



We will have a very exciting group of yearling rams, ram lambs and a select group of females sired by Dakota Pride in 2021!



“DAKOTA PRIDE”

Peterson 9485

1st Yearling Ram

National Fitted Grand Champion Ram at 2019 NAILE

P **DOUG & LINDI PETERSON**
803-23rd Street N.E. Lemmon, SD 57638
701-376-3115 | peterson@sdplains.com
PETERSON SHEEP CO.

AJHS A Photo Contest Winners 2020

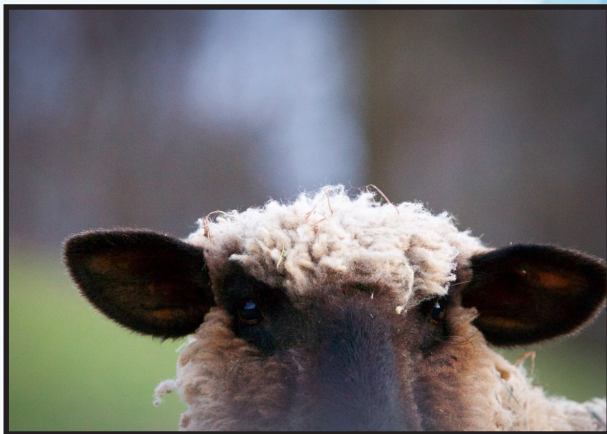


1st
Pat Gibbs, MT

Sheep Scenes **(sheep in their natural environment)**



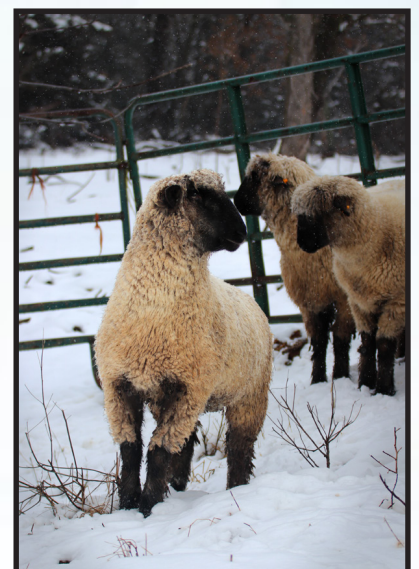
3rd
Meghan Zimmerschied, MO



2nd
Sally Bacon, PA



4th
Taylor Conley



5th
Meghan Zimmerschied, MO



1st
Pat Gibbs, MT

Sheep with People
(not show ring pictures)



2nd
Les Harris, TX



3rd
Jennifer Barlow, FL

5th
Miles Krieger, IN



4th
Jennifer Barlow, FL



*Congratulations to all
our winners!*

KJELDGAARD FARMS

“Our passion, sheep with style and size.”

We Don't Accept The Ordinary

**MAID OF HONOR
2017 RES NATIONAL
CHAMPION FITTED EWE**



So We Breed Exceptional Individuals

*Thanks to everyone
that has stopped by
the farm. It's been an
incredible year!*



**ANGIE'S PRIDE
2018 NATIONAL
CHAMPION FITTED EWE**

To Produce Extraordinary Results

Al and Mary Kjeldgaard | 4400 Co. Rd. IJ | Tekamah, NE 68061
almary@speednet.com | 402.870.0397

Johnson Family SHOW STOCK



Jeff & Laura, Billy & Christina, Wyatt Nixon,
Brooklyn & Nash Johnson
W8694 Kilkenny Rd Delavan, WI 53115
Billy 608-289-5686; Christina 260-609-7369;
Jeff 262-949-0073
johnsonfamilyshowstock@gmail.com

**Congrats Wyatt and Roxanne on an epic 2020!
"Roxanne" JFSS 9076 ET | Gustavo x JFSS 5050 Donor
Watch for 5050'S "Green Line" flush to drop in January!**



**Supreme Grand Ewe
2020 Georgia National**



**Supreme Grand Ewe
2020 Centralia FFA Show, MO**



**Champion Hampshire Ewe
2020 Freedom Fest, MO**



**Supreme Grand Ewe
2020 Indiana State Fair**



**Supreme Grand Ewe
2020 Indiana Stock Show**



**Supreme Grand Ewe
2020 Aksarben Stock Show**



**Supreme Grand Ewe
2020 Fountain Co Jr Nationals, IN**



**Supreme Grand Ewe
2020 WLBA Summer Spectacular**



**Supreme Grand Ewe
2020 WI Sheep & Wool Fest**

Flushes due in October, December, January, and March



**Reserve Grand Ram
Champion Hampshire
2020 Breakout Show & Sale, OK**



**Reserve Grand Market Lamb
2020 IL Jr Livestock Classic**



**Grand Champion Market Lamb
2020 Youth Livestock Expo**



**Reserve Jr Champion Hampshire Ewe
2020 Indiana State Fair**



**3rd Overall Hampshire Ewe
2020 Indiana Stock Show**



**6th Overall
2020 WI State Fair**

2020 Sires:

El Presidente	Drago	Next Level	Cross Faded
Gorilla	The Donald	Sweet Relief	El Padrino
Unicorn	Hooligan	Sundown	Gustavo
Green Line	First String	Big Sexy	Dexter

ONE BITE, EVERYBODY KNOWS THE RULES

Authausen
CLUB LAMBS
BRAD ANTHAUER 847.821.0301

Johnson Family
SHOW STOCK
BILLY JOHNSON 808.209.5886

EL PRESIDENTE
BULLSEYE X DROP THE MIC X SHRAPNEL

RRNNFF Fresh & frozen semen available

STUD RAM

State Hampshire Associations

OHIO HAMPSHIRE SHEEP ASSOCIATION OFFICERS

President: Frank Sexten
3420 State Route 380
Xenia, Ohio 45385-9735
Phone: 937-371-1392
Email: fsexten@gmail.com

Secretary/Treasurer: Marla Shell
1901 Doak Road
Midland, Ohio 45148
Phone: 614-496-8575
Email: mdshell319@hotmail.com

Vice-President: Denise Deal
9818 Navarre Rd SW
Navarre, Ohio 44662
Phone: 330-879-5327
Email: ddeal1974@aol.com

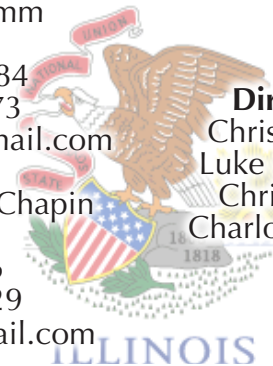
Board of Directors:
Denise Deal
Jim Brandt

This information was provided by state Hampshire associations. We encourage all of our state Hampshire associations to submit information on their activities for each issue of the Hampshire Heartbeat.

ILLINOIS HAMPSHIRE SHEEP ASSOCIATION OFFICERS

President: Megan Mumm
49 CR 1300 N
White Heath, IL 61884
Phone: 217-377-2073
Email: meganmumm@hotmail.com

Secretary/Treasurer: Bill Chapin
5680 E Reed Rd
Coal City, IL 60416
Phone: 815-954-5129
Email: chapinhamps@gmail.com



Directors:
Chris Cahoon
Luke Benjamin
Chris Meyer
Charlotte Toohill

NEW ENGLAND HAMPSHIRE SHEEP ASSOCIATION OFFICERS

President: Kyle Thayer
Vice President: Darlene Leary
Treasurer: Tina Fisk Colt
Secretary: Sue Searle

MINNESOTA HAMPSHIRE SHEEP ASSOCIATION OFFICERS

President: Rod Scheller
3646 County Rd 37
Monticello, MN 56362
Email: rodscheller@gmail.com

Vice-President: Bruce Bakken
29557 State Hwy 13
Hartland, MN 56042
Email: bjbakken54@gmail.com

Secretary/Treasurer: Art Frame
16465 Paul Ave.
Worthington, MN 56187
Email: aframe@nobleswildblue.com

Director: Mark Christensen
1561 250th Ave.
Tyler, MN 56178
Email: mcchris@frontiernet.net

Director: Gary T. Klug
Box 383
Harlan, IA 515372
Email: klughihamp@tm.net

Director: Reid Merrill
2163 250 St
Canby, MN 56220
Email: rvmerrill50@gmail.com

Director: Todd Schmidt
21407 775th Ave
Albert Lea, MN 56007
Email: rschmidt76@gmail.com

Director: Tom Bobendrier
1351 US Hwy 75
Pipestone, MN 56164
Email: shebob@svtv.com

SOUTH DAKOTA HAMPSHIRE SHEEP ASSOCIATION OFFICERS

President: Ty Fuller

17713 435th Ave.

Clark, SD 57225

605-520-4403

fuller2in@hotmail.com

Vice President: Jeff Slack

29141 SD Hwy 19

Viborg, SD 57070

605-360-4904

Secretary: Kristin Marshall

45491 204th ST

Arlington, SD 57212

Phone: 605-770-0132

Email: marshallke83@outlook.com

INDIANA HAMPSHIRE SHEEP ASSOCIATION OFFICERS

★ **President:** Dan Myers ★

833 E CR 350 S

Logansport, Indiana 46947

★ Phone: 574-355-6840 ★

Email: indianahamps@gmail.com

★ **Secretary/Treasurer:** Kris Myers ★

833 E CR 350 S

Logansport, Indiana 46947

★ Phone: 574-355-6840 ★

Email: indianahamps@gmail.com

PENNSYLVANIA HAMPSHIRE SHEEP ASSOCIATION OFFICERS

President/Secretary: Mindy Holtry

717-776-4192

The main focus of the PHSA is to support junior Hampshire exhibitors at the Keystone International.

MISSOURI HAMPSHIRE SHEEP ASSOCIATION OFFICERS

President: Leland Browing

54 SE Co. Rd. 16335

Appleton City, MO 64724

checkridge@embargmail.com

660-924-1090

Vice President: Larry Hand

12918 Maness Road

Desoto, MO 63020

lwband5@att.net

314-303-1141

Secretary: Julie Gatson

31310 Bluejay Rd.

Vandalla, MO 63382

gatsonfarms@gmail.com

573-594-3247

Treasurer: Kay Hayter

459 E. 550th Rd 65770

raykay70-72@hotmail.com

417-830-0263

AHSA Registration Amnesty

The American Hampshire Sheep Association is offering an amnesty period from now through December 31, 2020 for registrations. All Hampshire registrations will be done at the \$4 rate during this time period regardless of the animal's age. Please make plans to catch up those registrations that you have been putting off this fall and save yourself some money.

AHSA Board of Director Elections

The Board of Directors is comprised of directors from eight districts and three at-large directors. Directors are elected for a three-year term and may serve three terms before being retired for at least one term. There may be no more than two directors from any district and only one per state.

Directors are asked to attend two board meetings per year and participate in some conference calls. Directors do not receive a salary; however, expenses are reimbursed to directors for one meeting of their choice, per year. The following director positions are up for election in 2020.

District 1- WA, OR, CA, NV, HI, AK

District 3- AZ, NM, TX, OK

District 5- NE, IA, KS, MO

District 7- KY, WV, VA, AR, TN, NC, SC, LA, MS, AL, GA, FL

District 8- PA, NY, VT, NH, ME, MA, CT, RI, NJ, DE, MD

District 2- MT, ID, WY, UT, CO

District 4- ND, SD, MN, WI

District 6- IL, IN, OH, MI

The following individuals have chosen to run for the AHSA Board of Directors. All senior members who have paid their annual dues in the last 24 months should have received a ballot. Envelopes with your ballot must be postmarked by November 2nd to be valid for the director's election.

Candidates are Listed Alphabetically

District 2 - Leanne Hoagland

Hello from the Badlands of Eastern Montana! My name is Leanne Hoagland, and I am seeking the AHSA Board seat for District 2. My husband, Brett, and I, along with our son Connley, live in Glendive, Montana. We are the fourth and fifth generation of the Hoagland family to raise sheep in the great state of Montana. Connley is a 4-H and FFA member, showing slick and frame Hampshires in North Dakota and Montana. Last year, we were blessed to also attend NAILE in Louisville in 2019. We began raising registered Hampshire sheep in 2015 and now have a ewe base of 80; 60 of which are registered Hampshires and 20 are commercial black face ewes. We have consigned rams to the Montana Ram Sale for the past four years and are active in our regional Wool Growers. We offer a lamb donation each year through an essay contest to a 4-H or FFA member. We also breed, sell and train Shire draft horses as well as offer services in clinics, online courses, equine assisted therapy and overnight boarding.

I would bring to the board 18 years of teaching Ag Education. I spent 13 of those years teaching at the Junior College level in Ag, Welding and Equine Sciences. I then worked as a licensed addictions counselor for two years after the college cut positions and programs. When the high school opened an Ag position and started a brand-new Ag/FFA program in 2018, I took the opportunity to teach Ag again and build a program in our community.

Having served two terms on the Shire Horse Board as newsletter editor and social media person for a total of eight years, I learned a lot about registries and the workings of a board in that capacity. I feel that a board should work to promote and develop the breed they serve. As an unbiased approach to programming, education, marketing and promotion of the great Hampshire breed, I am a firm believer in developing and promoting our youth. The sheep industry is in the same plight as the draft horse industry; our members and breeders are aging and we are in need of youth and young producers to help maintain and grow the strength of our breed and genetics so the hard work and legacy of those who came before are not lost.

For these reasons, I feel I would be an asset to your board and advocate for our breed and industry. Thank you for your consideration. Feel free to contact me for questions, concerns or just to talk sheep.

Respectfully,
Leanne Hoagland

District 2 - Jesse Robbins

Hello, my name is Jesse Robbins and I'm seeking your vote to serve as the Director for District 2. I live in Santaquin, Utah with my wife, Katie, and our four children: Noah, Lucy, Hudson and Lincoln. My brother, Dave, and I own and manage Robbins Brothers Hampshires.

My involvement with Hampshire sheep began in 1996, when my grandfather purchased two ewes from the Wade flock for my brother and I as an FFA project. We enjoyed raising those original ewes so much that we are still growing and improving our flock 25 years later. Since then, our flock has grown to about 50 ewes. We raise both frame and wether-type Hamps and serve the purebred, commercial and club lamb markets. We also exhibit our sheep at the Utah State Fair every year, as well as other local fairs and stock shows. We have also sold rams in the Utah Ram Sale for many years.

From my experience as a first-generation Hampshire producer, I feel very strongly that getting youth involved in raising Hampshire sheep will continue to help our breed succeed. When we were starting our flock, my brother and I received a lot of help from Alvin McNeil. He has continued to serve as a mentor and friend for many years. My brother and I have had the opportunity to help several young people start their own flocks of Hamps and have enjoyed watching their success with the breed. I have also enjoyed helping my brother and sister-in-law with their 4-H Club and seeing the excitement the kids have for showing sheep for the first time, including two of my own children.

I love the versatility of the Hampshire breed and all it has to offer the sheep industry. Our Association does a great job of promoting the breed and I feel that more could be done in our district. I will do all I can to advance the breed and help our industry be successful. I enjoy the friendship of many Hampshire breeders in Utah and the surrounding states and I look forward to meeting more Hampshire breeders in District 2 and around the country. Thank you for your vote and support in representing District 2!

Sincerely,
Jesse Robbins

District 6 - Doug McAllister

Hello Hampshire Enthusiasts,

My name is Doug McAllister and I am asking for your support as I seek to become a member of the AHSA Board of Directors.

My wife and I own and operate Alpha and Omega Genetics, a small farm in Western Ohio, where we've been incredibly blessed to raise two beautiful daughters who love showing and raising sheep. Over their show careers they have raised and exhibited market lambs, fitted and slick-shorn Hampshire's, fitted and slick-shorn Dorsets, Dorset Advantage and slick-shorn Suffolk's. With time, this has developed our current 70-head flock (45 being Hampshire) and growing, just don't tell my wife.

I work for the State of Ohio as a Meat Inspector and have previous work experience with livestock ranching in Arizona. Our family has spent our collective lifetime involved in 4-H, FFA and numerous breed associations, as advisors, committee chairs and invested members. I currently serve as:

- Member of the Ohio Sheep Improvement Association, LEAD Council Executive Committee
- OSIA Chairman of the Breeding Sheep Show Committee
- Member of The Ohio Youth Livestock Sheep Committee
- Member of the Arcanum MVCTC FFA Advisory Board
- Advisor Swine Kooler 4-H Club

I believe in supporting youth development through and interest in the sheep industry. My goal is to work hard to improve systems, while having some fun and ensuring the common good is incorporated. My mission is to shine God's light in all I do. I hope those impacted recognize tangible improvements and see my tenures generating positive outcomes for the organization and its members.

Thank you for your support!
Doug McAllister

At- Large - Jason Mumm

Hello, my name is Jason Mumm and I am seeking your vote for re-election as your At-Large Director.

My family and I live in White Heath, IL where we own and operate the Mumm Hampshire flock. My wife, Megan, and our three children, Beau (17), Luke (12) and Emmalou (5) all help to maintain our flock of 50 ewes. We remain active by showing at the local, state and national level as well as several sales during the year. As well as being involved in AHSA, Megan and I are also serving our local 4-H Livestock Committee and the Sheep Superintendents of the Champaign County Fair. We also volunteer to help with various activities and contest with FFA.

I have enjoyed the opportunity to be on the board working with my fellow board members and the entire membership. I currently serve as the Vice President as well as on the Executive Committee and the Services Committee.

I believe that we must work together to move the AHSA forward. In order to accomplish this, we must continue our support of the junior activities and members. We also need to listen to our fellow members and address their needs as well.

If re-elected I will continue to support the junior members and their activities. I will listen to the members and bring their ideas and concerns to the board. I believe that it is important that the board and the membership work together to move the AHSA forward into the future.

I look forward to working with and for you in the future. Thank you for your consideration.
Jason Mumm

Sheep Show Schedule:	Louisville, KY	NORTH AMERICAN INTERNATIONAL LIVESTOCK EXPOSITION	
Wednesday, November 11 8:00 am - Begin Receiving Sheep		Saturday, November 14 8:00 am - Jr Wether Lamb Show - Purebreds 8:00 am - Jr Breeding Sheep Show (Hamps Ring 3)	Tuesday, November 17 8:00 am - Open Show (Hamp Ring 1)
Thursday, November 12 8:00 am - Market Wether Lamb Showmanship		Sunday, November 15 8:00 am - Jr Wether Lamb Show - Crossbred & Champion Drive 8:00 am - Jr Breeding Sheep Show & Jr Supreme Champion Selection	Thursday, November 19 Supreme Drive
Friday, November 13 8:00 am - Market Wether Lamb Showmanship 9:00 am - Jr Breeding Sheep Showmanship 5:00 pm - Lead Classes	Pen Size: South Wing A & B = 6x6 or 7x7		**New for 2020** -All animals MUST enter through Gate 1 -Gate 1 will be open 24/7 -Health inspections will be done at time of gate entry -All animals must have valid health papers with Official USDA Identification
*More information can be found in the Premium Book			

American Hampshires Sheep Association Store

variety of items, colors, & sizes!



Check Out Some Of The New Items! <https://ahsaapparel.itemorder.com/sale>

HAMPSHIRE HISTORY

A Look Back To 1983

In this issue we look back to 1983. Mike Caskey, Minnesota was the AHSA President and Clifford Throckmorton, TX was the Vice President. Jim Cretcher was the Executive Secretary and the office was in Ashland, Missouri. Other Board Members were Chauncey Hubbard Jr., Oregon, Rodney Nelson, Colorado, Earl Christensen, Nebraska, Darryl Kleinert, Illinois, Ben Powell, Tennessee, Tom Huber, Georgia, Clyde Brubaker, Pennsylvania, Dan Schlichter, Ohio and Richard Reynolds, Washington.

In 1983 a Hampshire Evaluation and Type Conference was held. The Board of Directors reviewed the proceedings and recommended that Hampshire breeders strongly consider six points in their breeding program. They are listed below.

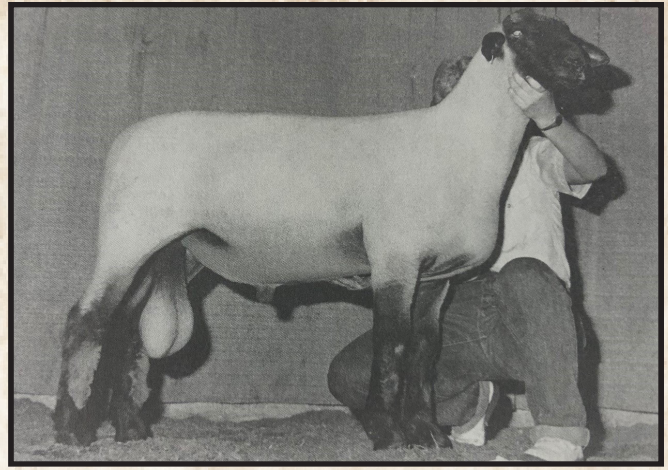
In 1983, 20,261 Hampshires were registered. Breeders from Illinois registered the most with 2,500 head followed by California, Oklahoma, Ohio and Minnesota. Membership fee was \$25.00 for seniors and \$10.00 for juniors. Cost of registration for an animal under a year of age was \$3.00 and \$6.00 if over a year of age.

1. Breed the kind, type and style of Hampshire which provides you with the greatest profit in your particular area and under your management system. But, remember all types of Hampshires should have Hampshire breed characteristics.
2. Take advantage of the genetic information and tools available to make improvements in performance, productivity, efficiency and predictability. The future success of the Hampshire breed lies with the use of accurate records!
3. Select for positive fertility traits and reproductive efficiency in both rams and ewes. Ewes which reach sexual maturity early, will breed out of season and produce multiple births; they will be more economical to raise.

In selecting rams, emphasize well developed testicles. Research has proven that rams with a larger scrotal circumference tend to sire daughters which have a higher life time lambing percentage.

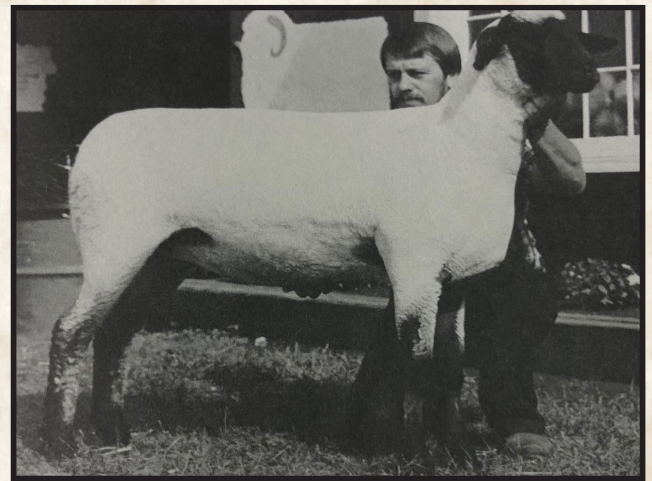
4. Put more emphasis on wool. Select against black fiber and breed for a clean, bright fleece.
5. Encourage Hampshire sheep projects for our young people, as these not only build character and mold families together but also create future Hampshire sheep breeders. Hampshire breeding and club lamb projects create a learning situation which helps occupy idle time and teaches responsibility. Young people are the future of our Hampshire breed.
6. Be honest with yourself in your breeding program and pedigrees. Be honest in your dealings with prospective buyers. Integrity within a breed can move the whole breed forward!

The 1983 National Hampshire Show was held at the Eastern States Exposition in Springfield, Massachusetts. Champion Ram was bred and shown by Schlichter Hampshires, Ohio. Reserve Champion Ram was bred and shown by Peter and Charles Bobendrier, Minnesota. Champion Ewe was bred and shown by Pine Lawn Farm, Mike Caskey and Family, Minnesota. The Reserve Champion Ewe was bred and shown by Van Vleck Farm, Connecticut. The top five exhibitors flocks were Pine Lawn Farm, Minnesota, Van Vleck Farm, Connecticut, Rebecca Hope, Maryland, Birch Hill Hampshires, Maryland, Andrew Family, Maine and Harold Bedinger and Family, Illinois.

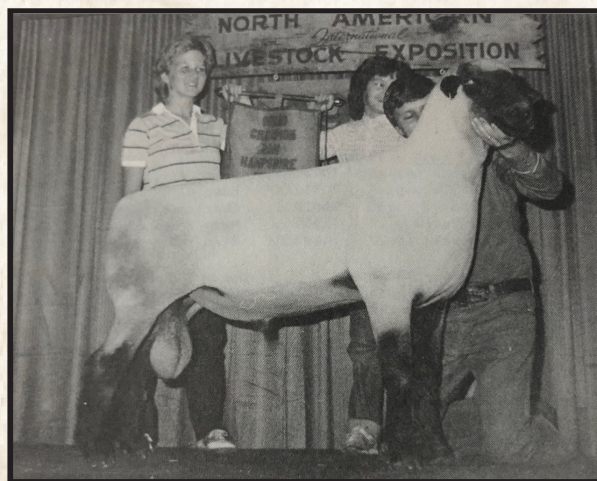


National Champion Ram
1st Placed Intermediate Ram Lamb
Bred & Shown by: Schlichter Hampshires, OH

Champions at the International Hampshire Show in Louisville, KY at the North American International Livestock Show were as follows: Champion Ram was bred and shown by Harold Bedinger and Family, Illinois. Reserve Champion Ram was bred and shown by Heggemeier Sheep Farm, Illinois. Champion and Reserve Champion Ewe were both bred and shown by Heggemeier Sheep Farm, Illinois. The top five flocks were Heggemeier Sheep Farm, Illinois, Gary Niemeier, Illinois, Harold Bedinger and Family, Illinois, Pine Lawn Farm, Mike Caskey and Family, Minnesota and Albert Wilson Jr, Virginia.



National Champion Ewe
1st Placed Late Yearling Ewe
Bred & Shown by: Pine Lawn Farm,
Mike Caskey & Family, MN



International Champion Ram
1st Placed Yearling
Bred & Shown by: Harold Bedinger & Family, IL



International Champion Ewe
1st Placed Yearling
Bred & Shown by: Heggemeier Sheep Farm, IL

Breeding and Early Gestation Nutrition in Ewes

Dr. Alison Crane

Ewe management during pre-breeding, breeding, and early gestation greatly impacts the results we see at lambing time about 150 days later. Proper management includes health, nutrition, and overall body condition, with each one of these affecting the another. If we follow a few simple guidelines, not only can we have greater breeding percentages, but higher lambing rates (lambs born/ewe), and generally healthier ewes and lambs.






To start, one of the easiest things we can do is nutritionally flush the ewe flock by providing 150-200% of their daily nutritional requirements (NRC, 2007) and as a general rule, increase their body condition score from a 2.25/2.5 to a 3 (see figure one) within the first two weeks of breeding. This process starts just prior to ram turnout and will peak two weeks into the breeding season, which is the point we would like to reach a body condition score of 3. This process can lead to higher pregnancy rates and higher lambing rates. Typically, ewes can be flushed on a fresh green pasture or by grain supplementation (generally 1 pound of grain per head per day). This process can also be done with the ram being used, prior to breeding, with the goal being to reach a 3.5 body condition score prior to turnout.

Secondly, maintaining the ewe flock at a body condition score of 3 until mid-gestation (about day 70) is also a great way to maintain pregnancies, reduce feed waste, and increase profitability. This is a stage of production, which in many cases, any given operation overfeeds a ewe. One of the most devastating things we can do to affect longevity of the ewe and her lambs is lead her into late pregnancy being over conditioned (exceeding a body condition score of 3.75-4). Being at a high body condition heading into late pregnancy can lead to pregnancy toxemia and hypocalcemia causing loss of life, but also income.

The recommendation for body condition scoring your flock is not to take scores on the entire flock. Instead, condition score either 10 head or 10% of your flock, whichever number is highest to get an idea of the average body condition of your flock.

In early gestation (through the first 15 weeks of pregnancy), most ewes can maintain a condition score 3 with green pasture and some supplementation (grain or pellet); however, it is important to also provide adequate mineral supplementation at this time since pasture tends to be going dormant. Most pelleted supplements will include some vitamins and minerals, but it is important to note that you are meeting her requirements. Having adequate energy, protein, minerals, and vitamins cannot only affect her breeding ability, but also her ability to maintain health and resist parasites in her immunosuppressed state. In many operations, grazing might not be an option. If not, feeding a brome/mixed hay with some grain supplementation or alfalfa usually suffices.

In conclusion, we can save money, ewes, and lambs, while also increasing their productivity and longevity through proper nutrition in early pregnancy. Why not save money and increase the success of our flock? It does take a little more time to body condition score your flock, however, I believe it is worth it!

	<p>Backbone The bones form a sharp narrow ridge. Each vertebra can be easily felt as a bone under the skin. There is only a very small eye muscle. The sheep is quite thin (virtually unsaleable)</p>	<p>Short Ribs The ends of the short ribs are very obvious. It is easy to feel the squarish shape of the ends. Using fingers spread 1cm apart, it feels like the fingernail under the skin with practically no covering</p>
	<p>Backbone The bones form a narrow ridge but the points are rounded with muscle. It is easy to press between each bone. There is a reasonable eye muscle. Store condition- ideal for wethers and lean meat.</p>	<p>Short Ribs The ends of the short ribs are rounded but it is easy to pass between them. Using fingers spread 0.5cm apart, the ends feel rounded like finger ends. They are covered with flesh but it is easy to press under and between them.</p>
	<p>Backbone The vertebrae are only slightly elevated above a full eye muscle. It is possible to feel each rounded bone but not to press between them. (Forward store condition ideal for most lamb markets now. No excess fat).</p>	<p>Short Ribs The ends of short ribs are well rounded and filled in with muscle. Using 4 fingers pressed tightly together, it is possible to feel the rounded ends but not between them. They are well covered and filled in with muscle.</p>
	<p>Backbone It is possible to feel most vertebrae with pressure. The back bone is a smooth slightly raised ridge above full eye muscles and the skin floats over it</p>	<p>Short Ribs It is only possible to feel or sense one or two short ribs and only possible to press under them with difficulty. It feels like the side of the palm, where maybe one end can just be sensed.</p>
	<p>Backbone The spine may only be felt (if at all) by pressing down firmly between the fat covered eye muscles. A bustle of fat may appear over the tail (wasteful and uneconomic).</p>	<p>Short Ribs It is virtually impossible to feel under the ends as the triangle formed by the long ribs and hip bone is filled with meat and fat. The short rib ends cannot be felt</p>

Summer 2020 Show Results

NORTH EAST YOUTH SHEEP SHOW



CHAMPION EWE
JENNA SULLIVAN



CHAMPION RAM
JENNA SULLIVAN



RESERVE CHAMPION EWE
RACHEL OLVER



RESERVE CHAMPION RAM
RACHEL OLVER

SAVE THE SUMMER JUNIOR SHOW - SPENCER, IA



CHAMPION EWE
DYLAN KLUG



CHAMPION RAM
BOBENDRIER BOYS



RESERVE CHAMPION EWE
BOBENDRIER BOYS

RESERVE
CHAMPION
RAM
CHRISTIAN
TIFFT



YOUTH SHEEP EXPO



CHAMPION EWE
KYLIE SCHAKEL



CHAMPION RAM
JOEY SLACK



RESERVE CHAMPION EWE
LINSEY EDDY



CHAMPION WETHER
WYATT NIXON



RESERVE CHAMPION RAM
WT TAYLOR

Annie's Internship Experience



Thankful, as defined by Oxford Languages, means "expressing gratitude and relief." (OL). The word itself is often over-used and under-appreciated; however, when asked to reflect on my summer as the American Hampshire Sheep Association (AHSA) Intern, thankful is the first thing that comes to mind.

First and foremost, I am thankful to be involved in the agricultural industry. Having grown up in rural Indiana, on my fourth-generation family farm, I have been wrapped up in the agricultural community from the beginning. At an early age I learned life is about the people you meet, the connections you make and the relationships you build; and there are no better people than those involved in agriculture.

Unfortunately, due to the current circumstances of the world I, as the AHSA intern, was unable to travel to shows and sale events this summer. While, I was certainly looking forward to attending those events and meeting new people, I have cherished the many breeders and showman I have come to know over the phone. It seems we are all in the spirit for a little extra human interaction, and I am thankful for those who made my summer so enjoyable.

Secondly, I am thankful Jeff was willing to take a leap of faith in such uncertain times. Like many, being a college student in the spring of 2020 brought sleepless nights and worrisome thoughts; unsure of what the coming months would entail.

Nevertheless, the AHSA remained committed to offering their internship position, of which I am thankful for all that I learned throughout the summer. Not only did I discover the ins and outs of the registry process, I learned how to effectively communicate with customers over the phone, while continuously sharpening my time management and organization skills. In addition to working for the AHSA, I had the opportunity to complete registry work for several other breeds, including Cheviots, Rambouillets, Royal Whites and Tunis. I am sure the many life skills I learned throughout the summer will continue to be prove vital within the workforce.

Finally, I am thankful to have the ability to pursue my passion within the sheep industry! I have had the opportunity to work for several established breeders, and have immersed myself in many different operations; however, I have thoroughly enjoyed my summer learning about the sheep industry from a different perspective. I would strongly encourage other young agriculturalists to apply for the AHSA summer internship program!

KJELDGAARD/WILLWERTH HAMPS

Big Thank you To All The Buyers and Bidders on our Online Sale!

Your reception of our sheep was overwhelming!

WOW a \$1333 Average

Good luck with your purchases!

**Plan To Be With Us
Next April
For our 2nd Sale**

**Ron
515.570.2173**

**YOUR PLACE FOR
BIG GENETICS
FOR
BIG RESULTS**

**AI
402.870.0397**

Alliance Looks to Train Animal Ag Allies

The Animal Ag Alliance is looking for farmers, ranchers and veterinarians who want to be outspoken advocates for agriculture – both online and in their communities – to participate in Animal Ag Allies.

The program is looking for emerging voices in the dialogue around modern animal agriculture to provide development opportunities and connect them with one another as well as industry experts. The program provides opportunities for networking, training and continuous development of issue expertise and communication skills. The Animal Ag Allies will be on the front lines of responding to emerging issues and sharing positive content about animal agriculture.

The ideal participant has already demonstrated their commitment to engaging on relevant issues and is ready to take their efforts to the next level and possesses the following qualities:

- Established public social media presence on at least one, ideally more, of the following platforms: Facebook, Twitter, Instagram, YouTube, Pinterest.
- At least 1,000 existing followers on one or more of the above platforms.
- Previous communications training experience through programs such as Masters of Beef Advocacy, Operation Mainstreet, and other state or national industry programs.
- Prior experience with public speaking and working with media.

These are suggested guidelines, not set-in-stone requirements. The deadline to apply for the next class is Nov. 6.

American Hampshire Sheep Association

Online Sale Entry Form

Hosted by integritylivestocksales.com

Sale Rules:

- This sale is an online event sponsored by the AHSA. The sale will be hosted by integritylivestocksales.com and will be held on November 4th.
- This sale is open to bred registered Hampshire ewes up to five years of age or exposed registered Hampshire ewe lambs.
- No entry fee will be charged. 8% of the final selling price will be charged on all animals sold.
- You must be a 2020 paid member of the American Hampshire Sheep Association to enter animals in this online sale.
- **October 26th is the deadline for submitting entries.**
- An application for registration with appropriate fees or registration certificate must be provided with your entries.
- High quality pictures that show at least a side view and rear view are recommended and these must be provided by entry deadline. Ideally these would be emailed to asregistry@gmail.com.

Consignor _____ Phone Number _____

Consignor's website _____

Flock Tag Number _____

Sire _____

Dam _____

Date of Birth _____ DNA _____

Location of Sheep _____

Reserve price (if different than the \$300 starting price for all ewes) _____

Delivery Options _____

Comments _____

Please send this form along with entry fee and registration application or certificate to the American Hampshire Sheep Association, PO Box 231, Wamego, KS 66547. Or by email to asregistry@gmail.com. For more information contact Jeff Ebert at 785-456-8500.

INDEX TO HEARTBEAT ADVERTISERS

B				
BOBENDRIER BOYS	INSIDE			
BOBENDRIER HAMPSHIRE	FRONT			
	COVER			
C				
CHAPIN HAMPS		23		
H				
HELD'S HAMPSHIRE		31		
HIGHLAND HAMPSHIRE		18		
HOWELL CLUB LAMBS		52		
J				
JOHNSON FAMILY SHOW				
STOCK		40-41		
K				
KJELDGAARD HAMPSHIRE		39		
KJELDGAARD/WILLWERTH		52		
HAMPS				
KLEINERT HAMPSHIRE		19		
M				
MARSHALL SHEEP COMPANY		14		
N				
NELSON HAMPSHIRE		17		
P				
PETERSON SHEEP CO.		36		
PINE LAWN FARMS		32		
PULLIN'S HAMPSHIRE		35		
R				
RIKOW HAMPS	INSIDE			
	BACK			
	COVER			
S				
SD STATE UNIVERSITY		9		
T				
TAM HAMPSHIRE		8		
V				
VIP CLUB LAMBS		11		



DIRECTIONS

In a small bowl mix 3 tablespoons of the olive oil, garlic, black pepper, salt, Aleppo, and oregano. Rub this mixture over the lamb chops, and leave covered in a medium bowl or plate for 1 hour in the refrigerator.

When ready to cook, preheat the oven at 400F.

Heat a cast iron or oven-proof skillet over high heat. Add the oil and swirl the pan to coat well. When the pan is hot, add the lamb chops, sear on each side for about 2 minutes, till they start to turn light brown. Transfer the skillet to the oven and cook till the lamb chops reach an internal temperature of 145F. Remove the chops from the pan and place them in a serving dish and cover with foil.

While the lamb rests, prepare the tomatoes. Place the tomatoes in a medium bowl. Add the mint. Add the olive oil and vinegar, season with salt and toss to coat well.

When ready to serve, sprinkle the sumac over the lamb chops and serve with the tomatoes.

INGREDIENTS

For the lamb:

- 1/4 cup extra-virgin olive oil
- 4 garlic cloves, peeled and grated
- 2 teaspoons ground black pepper
- 2 teaspoons kosher salt
- 1 1/2 teaspoon red pepper flakes
- 1 teaspoon dried oregano
- 6 American lamb loin chops (about 2 lbs total weight), bone-in about 1 inch thick
- 1 teaspoon ground sumac

For the tomatoes:

- 1 pound medium tomatoes
- 3 tablespoons chopped mint
- 2 tablespoons extra-virgin olive oil
- 1 tablespoon apple cider vinegar
- Kosher salt

HOWELL CLUB LAMBS



SIRES FOR 2021 LAMBS:

- DISCOVER (PAYBACK X POCKET MONSTER) KERSHNER
- POCKET CHANGE (PAYOFF X POCKET MONSTER) KERSHNER
- PREPAY (PAYBACK X PEACE PIPE) BURCH
- DOUBLE R (ROAD RAGE X RAINMAN) HOWELL

Howell Club Lambs

8582 Township Line RD | Celina, OH 45822

PH. 419-953-0238 | Larryhowell@Bright.net

www.Howellclublambs.com

THE DECK IS STACKED

Our September lambs. Same genetics as last year.



Beautiful Stud lamb out of Blondy & Peterson ewe



Outstanding ewe lamb out of Blondy & a HomeBoy daughter



Straight smooth stud lamb out of Blondy & a Rapid Fire daughter



Richard Krackow

Arcadia, WI | rkdrealt@trivest.net | PH: 608-343-2899

Investing in great genetics is a sure bet!

Introducing...
THE GAMBLER



NIEMEIER 9222 "THE GAMBLER"
Sired by: Niemeier 723 "Big Guy" (2018 NAILE Res. Champion Ram)

Thank you to those that invested in
Spoonster Hamps Genetics this spring:



Connelly Hoagland - Montana
Spoonster 20-07 / Sire: Gentlemen's Agreement



The Ploetz Family - New York
Spoonster 20-12 / Sire: Gentlemen's Agreement



Jeffrey McConn - Pennsylvania
Spoonster 20-13 / Sire: Gentlemen's Agreement



Be sure to follow us on Facebook at
Spoonster Hamps to stay up to date on our breeding program and show results.

Spoonster Hamps / The Spoonster Family / Eolia, MO / PH: 636.359.5487