

HAMPSHIRE

Heartbeat

Winter 2020



Thank You

TO ALL OF THE
FOLLOWING BUYERS

AND TO EVERYONE WHO
BID ON OUR SHEEP IN 2019

WE ARE HUMBLLED BY YOUR CONFIDENCE IN OUR BREEDING PROGRAMS.

Bobendrier Hampshires



CHAMPION MIXED PAIR

2019 NAILE OPEN SHOW

Bobendrier 19-07 RR

Sired by: Bobendrier 17-47, 'Rare Rebel' son

Bobendrier 19-16 RR

Sired by: Bobendrier 17-38, 'Stealth' son

Bobendrier Boys



RESERVE CHAMPION FITTED RAM

2019 NAILE JUNIOR SHOW

3rd Place March Ram, 2019 NAILE Open Show

Bobendrier Boys 19-60 RR

Sired by: 'Rare Legend'

2019 Buyers:

Grant Basting, IL
Berens Family Hamps, SD
Brady Carter, MN
Creekside Farm, MN
Tom Foster, MN
Foundry Acres, MA
Duane Grimme, OH
MHW Farm, IA
Mumm Hampshires, IL
Dave Pinckney, NY

Grace Powell, TN
Ram'n Acres, MN
Ray Kay Acres, MO
Averi Smith, IA
Bobby Spoonster, MO
Stephen Farm, OH
Sterkel Hampshires, CO
Bill Sturtz, IA
Wannarka Hamps, MN
Wind Runner Farm, OH

Don Drewry, MN
Spoonster Hamps, MO
Duane Grimme, OH
Ryan Krog, MN
Evan & Nash Arthur, IN
Randy Berens Family, SD
Josh Heppner Family, MN
Mike Firestine, PA
Jeffrey McConn, PA
Gillmore-Davison Hamps, NE
Haley Christensen, MN

Louisville Highlights:

Bobendrier Hampshires: 3rd Fall Ram, 4th January Ram, 5th Yearling Ewe, 2nd Fall Ewe,
2nd January Ewe, 1st Pair Ewe Lambs, 3rd Flock, Champion Mixed Pair

Bobendrier Boys: 5th February Ram, 3rd and 5th March Rams, 4th Pair Ram Lambs

Sincerely,

Bobendrier Boys

1351 Hwy 75
Pipestone, MN 56164
shebob8@gmail.com
507.215.0334



Bobendrier Hampshires

1607 90th Ave
Pipestone, MN 56164
jcbobendrier@gmail.com
507.825.4072

CONTENTS

- 4 **CALENDAR OF EVENTS**
A list of upcoming Hampshire events.
- 5 **PRESIDENT'S MESSAGE**
Updates from Katelyn Parsons.
- 7 **FEATURING LARRY CREGO**
A feature on Larry Crego and family.
- 9 **FEATURING GILLMORE-DAVISON**
A feature on Gillmore-Davison & family.
- 11 **AHSA 2019 FUTURITY RESULTS**
The final futurity standings.
- 12 **JUNIOR SHOW**
Information at the AAJS.
- 13 **HAMPSHIRE HISTORY**
A look back at Hampshires in 1991.
- 14-21 **NATIONAL HAMPSHIRE SHOW RESULTS**
Results from the NAILE.
- 23 **SHEEP SCENES**
Photos from NAILE.
- 25 **ALB ELECTS NEW LEADERSHIP**
The American Lamb Board has new chairs.
- 26-31 **JUNIOR HAMPSHIRE SHOW RESULTS**
Juniors Results from NAILE.
- 33 **AHSA PHOTO CONTEST**
Looking for photos that showcase sheep.
- 34-35 **YOUTH CONNECTION**
Breaking the cycle of unrealistic expectations.
- 38 **APPLICATION FOR INTERNSHIP**
For anyone wanting to apply for summer internship.
- 39 **NEW AHSA MEMBERS**
The newest members of AHSA.
- 39 **NATIONAL HAMPSHIRE SHOW**
Information for the National Hampshire Sale.
- 42 **AHSA FUTURITY NOMINATIONS**
The breeder nominations for AHSA
- 43 **JUNIOR FEATURE**
A feature on Jordyn Leininger
- 45 **2019 ASHA SCHOLARSHIP WINNERS**
Winners: Mikara and Danille
- 46 **AHSA STORE**
Clothing items for sale.
- 47 **ONLINE SALE ENTRY FORM**
The form for the upcoming AHSA online sale.
- 49 **JUNIOR CORNER**
A note from AJHSA President Morgan Hauger
- 50-51 **STATE HAMPSHIRE ASSOCIATIONS**
Contact Information for all State Associations.
- 53 **AHSA OFFICE UPDATE**
The happenings in the AHSA office.
- 54 **LOCAL FUNDING PROGRAM**
For those looking for lam promotional funding.
- 56-59 **HAMPSHIRE HERITAGE AWARD**
The recipients of the Heritage Award.
- 63 **HAMPSHIRE JUNIOR SHOW**
Information for the Junior Hampshire Members.
- 65-67 **AHSA FUTURITY RULES**
Updated AHSA Futurity Rules for 2020.
- 69 **ASHA ONLINE SALE**
Information for the two online sales.
- 71 **MEMBER INFORMATION**
Registration by member, transfer by members, & registration by state.
- 72-73 **AHSA 130TH ANNUAL MEETING**
Notes from the annual meeting.

Calendar of Events

MARCH

- 1 Deadline for entries for the Prairie State Elite Show & Sale
www.integritylivestocksales.com
- 1 Deadline for entries for the Ohio Showcase Sale
www.selectls.net
- 15 Deadline for entries for the Great Lakes Sale
www.bannersheepmagazine.com

APRIL

- 3-4 Prairie State Sale, Springfield, IL – managed by Integrity Livestock Sales
- 4 Adams & Kleinert Online Sale hosted by www.wlivestock.com
- 6 Ebert Sheep Farm 50th Annual Sale hosted by www.integritylivestocksales.com
- 18 Illinois All Breeds Sale, Bloomington, IL hosted by www.bannersheepmagazine.com
- 19 Kjeldgaard & Willwerth Online Sale hosted by www.integritylivestocksales.com
- 20 Entry Deadline for the Midwest Stud Ram Sale
www.midwestsale.com
- 20 Entry Deadline for AHSA Online Sale
asregistry@gmail.com www.hampshires.org
- 21 Herrig Hamps & Southdowns Online Sale hosted by www.integritylivestocksales.com
- 23 Heart of a Champion Online Sale hosted by www.wlivestock.com
- 26 Rikow Hamps Online Sale hosted by www.integritylivestocksales.com
- 28 American Hampshire Sheep Association Online Sale hosted by www.integritylivestocksales.com
- 30 Pine Lawn Farm Online Sale hosted by www.wlivestock.com

MAY

- 2 Kleinert Hampshire Online Sale hosted by www.wlivestock.com
- 7-9 Ohio Showcase Sale, Greenville, OH managed by www.selectls.net
- 15 Deadline for Spring Hampshire Heartbeat
asregistry@gmail.com
- 23-25 Great Lakes Sale, Wooster, OH managed by www.bannersheepmagazine.com
- 25 Deadline for entries for the All-American Junior Show
www.allamericanjuniorshow.com
- 30 Midwest Junior Preview Show, Mendon, IL
www.midwestjuniorpreviewshow.com
- 30 Nugget All American Sale, Reno, Nevada managed by Willoughby Sales www.wlivestock.com

JUNE

- 1 Entry Deadline for AHSA Online Sale asregistry@gmail.com
- 8 Ebert Sheep Farm Online Sale hosted by www.integritylivestocksales.com
- 9 American Hampshire Sheep Association Online Sale hosted by www.integritylivestocksales.com
- 22-27 Midwest Stud Ram Sale, Sedalia, MO hosted by Heartland Livestock www.midwestsale.com
- 23 American Hampshire Sheep Association Junior Show, Sedalia, MO

JULY

- 2-5 All-American Junior Show, East Lansing, MI
www.allamericanjuniorshow.com
- 16-19 Northeast Youth Sheep Show, West Springfield, MA
www.nesheep.org

IF YOU WOULD LIKE TO HAVE YOUR SHOW OR SALE LISTED IN OUR CALENDAR OF EVENTS AND ON THE HAMPSHIRE WEBSITE, PLEASE EMAIL US THE INFORMATION. FOR SALES TO BE LISTED YOU MUST BE SELLING REGISTERED HAMPSHIRE SHEEP.

Official Publication of the American Hampshire Sheep Association

420A Lincoln
P.O. Box 231

Wamego, Kansas 66547

Ph: 785-456-8500 Fax: 785-456-8599

asregistry@gmail.com • www.hampshires.org

EXECUTIVE SECRETARY: **JEFF EBERT**

OFFICE MANAGER: **RENE ROBERTS**

STAFF: **AMBER THOMPSON, JANETTE FUND, JOELLE SYLVESTER, MORGAN HUELSMAN**

AHSA Board of Directors

- President: Katelyn Parsons Vice President: Jason Mumm
- DISTRICT 1 - Dina King
(707) 322-3469 - dinamking@hotmail.com
1st term expires in 2021
- DISTRICT 2 - Jason Simpson, CO
(970) 371-0276 - jsimponcl@aol.com
2nd term expires 2020
- DISTRICT 3- Bart Cardwell, OK
(508) 628-6463 - bartcardwell@noc.edu
1st term expires 2022
- DISTRICT 4 - Philip Thomas, SD
(605) 759-0574 - thomashamps605@gmail.com
1st term expires 2022
- DISTRICT 5 - Ted Van Horn
(620) 285-9486 - ted.vanhorn@ks.usda.gov
1st term expires in 2021
- DISTRICT 6 - Debbie Deal, OH -
(330) 607-1347 - ddeal1957@aol.com
3rd term expires 2020
- DISTRICT 7 - Scott Van Sickle
(270) 792-7173 - vansickleantiquityridgefarm@gmail.com
3rd term expires in 2021
- DISTRICT 8 - Katelyn Parsons
(413) 387-2726 - katelyn@mfbf.net
2nd term expires 2022
- AT-LARGE - Tom Bobendrier, MN
(507) 215-0334 - shebob@svtv.com
3rd term expires in 2021
- AT-LARGE - Derick Miller, TX
(806) 239-3670 - millerpecanfarms@gmail.com
3rd term expires 2022
- AT-LARGE- Jason Mumm, IL
(217) 377-2073 - meganmumm@hotmail.com
1st term expires 2020

Office Fee Schedule

- A. MEMBERSHIPS
- 1. New Senior Membership _____ \$25
 - 2. Annual Senior Dues _____ \$25
 - 3. New Junior Membership _____ \$15
 - 4. Junior Dues _____ \$15
- B. REGISTRATIONS
- Postmarked Sept 1 - April 30
- 1. Animals under 12 months _____ \$4
 - 2. Animals over 12 months _____ \$8
- Postmarked May 1 - August 31
- 1. Animals under 12 months _____ \$6
 - 2. Animals over 12 months _____ \$12
- C. TRANSFERS
- 1. Under 90 Days (from date of sale) _____ \$10
 - 2. Over 90 Days (from date of sale) _____ \$20
- D. DUPLICATE CERTIFICATE _____ \$5
- E. RUSH FEE (PER TRANSACTION) _____ \$5



Greetings from your President

Hampshire Breeders and Members,

While many of you are busy with lambing season in full swing, Jeff, his amazing staff and the board of directors are once again working to evaluate our current programs, implement any improvements that can be made, and create new programs that will benefit the membership. We've been doing this through a committee system in which our directors more than welcome feedback from their constituents. I know that during every full board of directors' call or meeting, someone says "I received multiple calls about X," which is great feedback and input for us as we continue to guide this organization.

The first new program the board has been working on putting together is a yearling ewe futurity. Our junior committee, which is chair by Tom Bobendrier, presented a proposal to fashion a yearling ewe futurity like the ewe lamb futurity program. 2020 will be the start of our first-ever yearling ewe futurity with options for both slicked and fitted yearlings to be shown. More details, including how to nominate a yearling ewe will be posted soon, so please stay tuned and get those yearlings futurity nominated! Our show and sale committee, which is chaired by Debbie Deal, made the recommendation to once again host two spring online sales and one in the fall, which any AHSA member in good standing can place an entry in. As you examine your lamb crop, please consider entering these sales!

One modification for the spring sales that I would like to mention will be the ability to enter semen, both fresh extended and frozen, for a \$10 entry fee. This is a pilot program this year and we hope to see the interest in semen sales help to grow these sales.

The show and sale committee also brought forth discussion the junior show that AHSA has sponsored at Sedalia. While the board has made the recommendation to move forward with the planned event on Tuesday, June 23, in Sedalia, we have concerns about the small size of this show. For us to justify the cost of this program moving forward, we need to see an increase in participation. So please, consider entering and competing in this show, juniors, if you would like to see it continue!

The final committee report was the public relations committee by chair Ted VanHorn. This committee was responsible for the ordering of magnets by AHSA and is pleased they will be included in mailings to members. Additionally, they are in the process of updating our displays to include pull-banners. Watch for them at our national shows!

Finally, I want to thank both Randy Pirtle and Brent Larson for their service to the board of directors and welcome Bart Cardwell and Phil Thomas to the board. We appreciate the years of service those two have put in and look forward to working with our two newest members of the board in the future!

P.S. We lost a supporter of the sheep industry in January with the passing of Kim Ketcham of Katcham Sheep Equipment in Edwardsville, IL. Our sincerest sympathies to his family.

Katelyn Parsons

ADVERTISING IN THE HEARTBEAT

****Printed three times a year****

WINTER ♦ SPRING ♦ FALL

You can choose to run an individual ad in a single issue of your choice, or choose a three-issue contract. Contract ads will be placed in three consecutive issues of the Hampshire Heartbeat. Contracts begin with the next available issue and run through the next two consecutive issues. Either an individual ad or a contract can be purchased at any time throughout the year. Prices for both types are listed below or advertises who provide ads ready for publication will receive a 15% discount on the listed prices. You may find more information at www.hampshires.org.

DEADLINES

Winter Issue: January 15th

Spring Issue: May 1st

Fall Issue: September 15th

Ad size or Placement	Single Issue Price	Three Issue Contract Price
Inside Covers	\$450.....	\$900
2-Page Spread.....	\$550.....	\$1100
Full Page	\$350.....	\$700
3/4 Page	\$300.....	\$600
2/3 Page	\$275.....	\$550
1/2 Page	\$250.....	\$500
1/3 Page	\$210.....	\$420
1/4 Page	\$165.....	\$330
1/6 Page	\$125.....	\$250
1/8 Page	\$100.....	\$200

**HAMPSHIRE
QUALITY
AT ITS FINEST!**

NIEMEIER 723 “Big Guy”



**We have some tremendous yearlings out of this
ram.**

**Special Thanks to the Bobby Spoonster
Family from Missouri for the purchase of 10 of
our Foundation Ewes.**

**Thanks to Nathan Leemon from
Illinois for the continued support of
our genetics!**

**NIEMEIER
HAMPSHIRE**

**4704 BLACKBURN ROAD
EDWARDSVILLE, IL 62025
618-541-0605
NIEMEIERFARMS@GMAIL.COM**

FEATURING LARRY CREGO & FAMILY



INTRODUCE YOURSELF & YOUR FAMILY

I am Larry Crego of Crego Livestock. Our operation is run by the whole family including my wife Diana, son Justin and his fiancé Madison, son Joaquin, his wife Sarah and their twin daughters Kami and Hadley. Diana holds it all together. She handles the books, majority of the lambing and bottle feeding the ones that need help. Joaquin is a full-time auctioneer and spends his free time at the farms. Justin works around the country as the director of a large oil and gas company. I am the hired hand; they do all the work. I am also a Livestock commission buyer. Joaquin and Justin market most of the sheep and take them to the shows and sales. It takes the whole village to keep it all together.

GIVE US A BRIEF DESCRIPTION OF YOUR HAMPSHIRE FLOCK

Our operation is at the base of the Rocky Mountains in Fort Collins, Colorado. We run 300 wether type Hampshire ewes, give or take a few. We have been fortunate enough to have had many Champions at the major shows and sales across the country. In 1981, Diana and I started Crego L/S with Hampshire and Suffolk frame sheep. Over the years we gradually changed over to all wether type. We were lucky enough to be the first to sell wether type sheep at the Oklahoma Black & White as well as the Midwest Stud Ram sale. (Silver Bullet is pictured, if you dig back far enough in pedigrees, almost all club lamb operations go back to him). We also have a small flock of Dorset and Southdown wether type.

WHY DID YOU CHOOSE TO INCLUDE REGISTERED HAMPSHIRE IN YOUR SHEEP OPERATION?

Hampshires were not the popular choice when we started. But we were able to see the future and the need to add muscle into flocks across the country. We jumped in feet first to be ahead of the curve. To this day, the Hampshire breed has allowed us to make the wide skeletal, big muscled kind of sheep that we love and are known for.

WHAT ADVICE DO YOU HAVE FOR PEOPLE STARTING OUT IN THE SHEEP BUSINESS?

Buy the best sheep you can afford. It's better to have a few great ones instead of a bunch of mediocre sheep. The numbers will come with time. Be prepared to put in a lot of time and work. Pay attention to the ever-changing trends and try to be ahead of the curve. Don't be afraid to try something new.

WHAT ARE ONE OR TWO ITEMS THAT YOU HAVE FOUND TO BE CRITICAL FOR THE SUCCESS OF YOUR SHEEP OPERATION?

Just like anything, don't go in thinking that it will be easy. Hard work and dedication are mandatory in this deal. Communicate with other breeders, learn from each other.

WHO ARE SOME PEOPLE THAT YOU CREDIT FOR YOUR SUCCESS WITH HAMPSHIRE?

Duron Howard, he judged the first wether type show at Midwest Stud Ram Sale and followed up by purchasing the first Champion Wether Sire from us there. (Silver Bullet pictured) Hurliman Bro's (Dwyane and Allan) and Dr. Cliff Stokes, for having Larry Mead leave the "little sheep" in the yearling class at Black and White, which allowed us to have the high seller. The Fitch family, Harold MacIrrath, Kenny and Slaton Strube, Joe Cook, Joe Harrell, Gail Christian, Haws Club Lambs and family. There are so many that I left out, we have been blessed by so many key people in the industry. It has been a fun ride and we hope it continues for years to come.

WHAT IS YOUR FAVORITE SPORTS TEAM?

No sports teams really. I do follow rodeo and was my sport of choice growing up. I have several good friends still involved in the PBR.

WHAT IS YOUR FAVORITE FOOD?

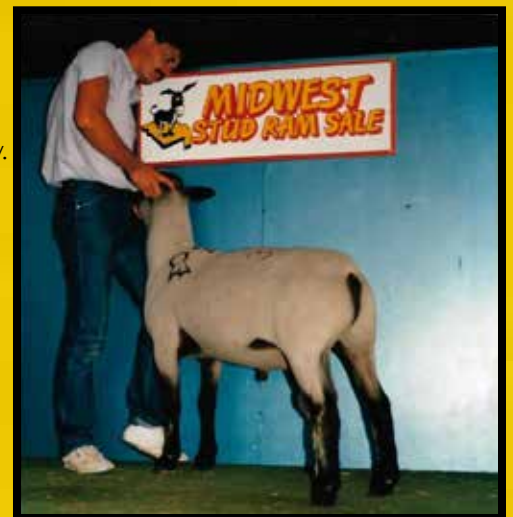
Lamb and Beef of course!!!

WHAT IS THE TOP ITEM ON YOUR BUCKET LIST?

Cape Buffalo hunt in Africa

WHAT IS YOUR FAVORITE PLACE YOU'VE VISITED?

I have been to so many, I would never be able to pick just one. So I guess the good ol' USA would have to be my favorite.



NELSON *Hampshires*

Our Sedalia entries will be out of these groups!

Fall ewe lambs



Yearling ewes



Yearling rams



Fall ram lambs

Rodney & Kathy Nelson
13329 WCR 74 Eaton, CO 80615

R: 970-481-9837 | K: 970-481-0861 | Nelsheep1@what-wire.com

FEATURING GILLMORE-DAVISON FAMILY



INTRODUCE YOURSELF & YOUR FAMILY

If you were the son or daughter of Frank and Viola Gillmore from Kansas, there was a good possibility you didn't just like raising and showing sheep, you loved it. It's believed that Frank began his showing career as a boy by exhibiting at numerous county fairs. He began exhibiting at the Kansas State Fair in 1930 and was recognized for 50 years of continuous showing in 1979. In attendance was Viola, sons Ralph, Richard and Tom, daughter Phyllis, spouses and seven grandsons. Over the years, all of the grandchildren raised sheep and showed against each other. Other breeds were added to the each family to cut down on rivalries. Richard will be remembered by sheep veterans for traveling the state and national fair circuit. Prior to his death in 1999, he was showing Gillmore-Davison Hampshires and Dorsets. A highlight for the family was when he and Tom teamed up to show the Reserve Grand Champion Ewe at 1997 NAILE. In time, Phyllis decided to sell the Dorsets and concentrate on the Hampshires. Near the same time, Tom decided to get a real job and went to work for Frito-Lay. Unfortunately, the combination of conflicting work schedules and 270 miles limited Tom's ability to fit the show flock. A stop gap measure was to exhibit at the Nebraska State Fair so he could spit shine the show flock. That issue was finally solved in August of 2016 when Phyllis moved to Beatrice, Nebraska, which is 45 miles from Lincoln.

GIVE US A BRIEF DESCRIPTION OF YOUR HAMPSHIRE FLOCK

While numbers have fluctuated, Gillmore-Davison has maintained 40-45 brood ewes and around ten ewe lambs. The goal has been to amass a group of ewes with similar genetics. That way, if a stud ram works on one ewe, he will likely work on several. Recently we have used Willwerth genetics to achieve desired results. Bobendrier and Kjeldgaard genetics have also been used.

WHY DID YOU CHOOSE TO INCLUDE REGISTERED HAMPSHRIES IN YOUR SHEEP OPERATION?

Dad gave me my first ewe lamb, Gillmore 8-58 "Babe." I can't imagine raising any other breed. I love how they look and their temperament.

WHAT ADVICE DO YOU HAVE FOR PEOPLE STARTING OUT IN THE SHEEP BUSINESS?

Do your homework. Read and ask lots of questions. Don't rely on just one source. Reputable breeders are more than willing to share their thoughts and give you pointers. Visit farms and fairs. Learn what equipment you will need. Learn what people feed and how much. Learn what vaccinations and wormers are necessary. Locate someone to call when your animal isn't acting right. Don't be afraid to call the breed secretary to locate breeders in your area.

WHAT ARE ONE OR TWO ITEMS THAT YOU HAVE FOUND TO BE CRITICAL FOR THE SUCCESS OF YOUR SHEEP OPERATION?

I believe in working hard and paying attention to detail. I also rely on relationships with other breeders to learn about the "latest" genetic and health issues and how to avoid pitfalls.

WHO ARE SOME PEOPLE THAT YOU CREDIT FOR YOUR SUCCESS WITH HAMPSHIRES?

Where do I start and where do I stop? My family, their friends and just about every breeder I come into contact with. There is so much to learn and the only way to do that is to ask questions.

WHAT IS YOUR FAVORITE SPORTS TEAM?

No special team. I just enjoy watching a good game with lots of good plays.

WHAT IS YOUR FAVORITE FOOD?

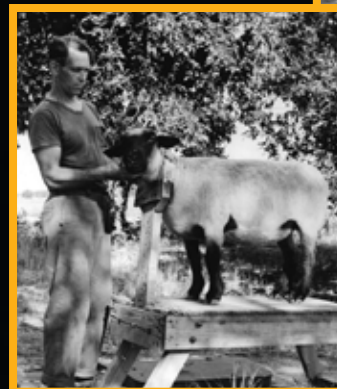
Filet and baked potato.

WHAT IS THE TOP ITEM ON YOUR BUCKET LIST?

Stay healthy so I can continue to raise and show sheep.

WHAT IS YOUR FAVORITE PLACE YOU'VE VISITED?

I love going to NAILE every year so I can see good sheep and visit with old friends and make new ones.



KJELDGAARD FARMS

"Our passion, sheep with style and size."

KJELDGAARD 18-953RR ABSOLUT

CHAMPION AT 2019 IA AND NE STATE FAIRS

WE WILL HAVE A GROUP OF FEB AND MARCH LAMBS BY HIM



**Congratulations to all the
Hamp Exhibitors for making
The National Show
a great one!**

KJELDGAARD 19-9RR

1ST PLACE MARCH EWE LAMB AT NATIONAL SHOW

SHE WILL BE HEADING OUR ONLINE SALE - SHE HAS THE SAME
MOTHER AS ADEL, OUR WINNING YEARLING EWE IN 2018.

**Please join us April 19th
for our Online Female Sale
Ron Willwerth & I will be
putting an outstanding set
in this sale.**

Sale by: Integrity Livestock Sales



Al and Mary Kjeldgaard | 4400 Co. Rd. IJ | Tekamah, NE 68061

almary@speednet.com | 402.870.0397

American Hampshire Sheep Association 2019 Final Futurity Standings

Fitted Purchased Division -

	<u>Name:</u>	<u>Animal ID:</u>	<u>Breeder:</u>
1st(tie)	Kendall Smith, MO	Spoonster 19-07	Tinleigh Spoonster, MO
1st(tie)	Ashton Daniels, MO	Borcher 9008	Borcher Sheep Co, WY
3rd	Averi Smith, IA	Alf 178-19	John & Brittany Alf, WI
4th	Averi Smith, IA	Hickman 1443 RR	Hickman Hampshires, WA
5th	Kendall Smith, MO	Spoonster 18-50	Tinleigh Spoonster, MO
6th	William Taylor, KY	Peterson 9722	Peterson Sheep Co, SD
7th	Connley Hoagland, MT	Spoonster 19-11	Tinleigh Spoonster, MO
8th(tie)	Jocelyn Brummet, TN	Alf 180-19	John & Brittany Alf, WI
8th(tie)	Grace Powell, TN	Bobendrier 18-178	Bobendrier Hampshires, MN
10th	Grace Powell, TN	Houghtaling 19-906	Houghtaling Hamps, SD



Kendall Smith - Fitted Purchased



Ashton Daniels - Fitted Purchased

Fitted Raised Division -

	<u>Name:</u>	<u>Animal ID:</u>	<u>Breeder:</u>
1st	Tinleigh Spoonster, MO	Spoonster 19-12	Tinleigh Spoonster, MO
2nd	Tinleigh Spoonster, MO	Spoonster 18-52	Tinleigh Spoonster, MO
3rd	William Taylor, KY	Taylor Stock Farm 916	Taylor Stock Farm, KY
4th	Connley Hoagland, MT	7 Mile 1901	7 Mile Hampshires, MT
5th	Dylan Klug, WI	Klug 19-170T NNP RR	Highland Hamps, IA



Tinleigh Spoonster - Fitted Raised

Slick-Shorn Purchased Division -

	<u>Name:</u>	<u>Animal ID:</u>	<u>Breeder:</u>
1st	Emily Stevens, OH	Westlake 0915	Danny Westlake, OH
2nd	Linsey Eddy, OH	Westlake 0925	Danny Westlake, OH
3rd	Chloe Stonesifer, PA	Fleener 1920	Fleener Hampshires, PA
4th	Corbin Coyle, KY	Poe 19283 AI	Poe Hampshires, IN
**5th	Morgan Hauger, IN	Poe 19113	Poe Hampshires, IN
6th	Rachel Olver, PA	FCL 1908	Fleener Club Lambs, PA
7th	Campbell Coyle, KY	Poe 19350 AI	Poe Hampshires, IN
8th	Linsey Eddy, OH	Westlake 0908	Danny Westlake, OH
9th	Emily Stevens, OH	Westlake 0910	Danny Westlake, OH
10th	Clark Coyle, KY	Poe 19028 AI	Poe Hampshires, IN
11th	Rachel Olver, PA	Fleener 1907	Fleener Hampshires, PA



Emily Stevens - Slick-Shorn Purchased

**Note Morgan Hauger, IN finished in 5th place, but she can only receive premiums for two placings, her raised division were a higher so those count as her two

Slick-Shorn Raised Division -

	<u>Name:</u>	<u>Animal ID:</u>	<u>Breeder:</u>
1st	Morgan Hauger, IN	Hauger 19010	Morgan & Maddie Hauger, IN
2nd	Morgan Hauger, IN	Hauger 19018	Morgan & Maddie Hauger, IN
3rd	Clark Coyle, KY	Terradise 9027	Campbell, Corbin & Clark Coyle, KY
4th	Brodie Payne, MO	Plaza Hamps 1474	Plaza Livestock, MO
5th	Ty Thorson, WI	Metro 1921	Ty Thorson, WI



Morgan Hauger - Slick-Shorn Raised

ALL AMERICAN JUNIOR SHOW

The 27th annual All American Junior Show will be held at the Michigan State University, in East Lansing, Michigan on July 2nd-5th 2020. Plans are well underway for the 2020 AAJS, please refer to the website (www.allamericanjuniorshow.com) for updates & entry blanks. Entries are due no later than May 25th, 2020. Last year's show in Kansas had around 2,000 head of sheep shown and we are expecting a much larger show in 2020 than last year!

CHAPIN HAMPS

Bill & Carole, Derek, Laura,
Clive & Quincy
Coal City, IL 60416
(815) 954-5129 chapinhamps@gmail.com



Champion Ewe –
Illini Bred Ewe Sale 2018

Sound, Honest, Consistent
Hampshire Sheep



Size, Thickness, Bone & Beauty

“Easy Keepers” that will work in
any flock – especially YOURS!



2nd Fall Ram at 2018 NAILE



February 2018 Ewe Lamb
Will be on the 2019 show circuit or may
show up at one of the Ohio or Illinois

Hampshire History

1991

In this issue we take a look back at 1991. This was the first year of computerized Hampshire Flockbooks. The President of the AHSA was Jim Riley from Missouri and the Vice President was Charles Kirlin from Indiana.

Other Directors were Dr. Mike Harms from Oregon, Alivin McNeil from Utah, Jim Newsome from Mississippi, Charles Bobendrier from Minnesota, Ray Core from Louisiana, Tim Fleener from Pennsylvania,

Pat Shannahan from Idaho and Buster Wilson from Virginia. The breeders who registered the most Hampshires in 1991 were Joe Cabaniss from Oklahoma, Jim Miller from Texas, Edgar Olson Family from Minnesota, Charles A Kirlin & Family from Indiana and Albert Wilson from Virginia.

The National Hampshire Show was held in Louisville in conjunction with the North American International Livestock Show. The judge was Ron Guenther. The Champion Ram was shown by Peter and Charles

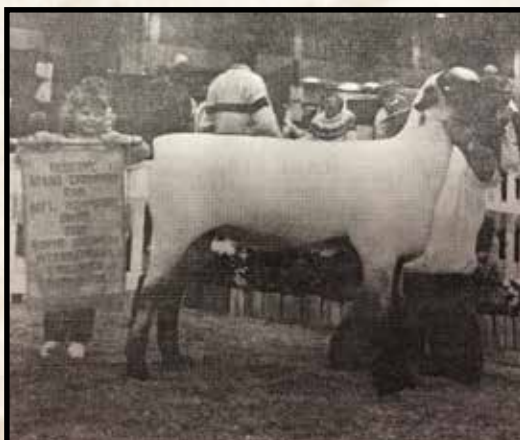
Bobendrier from Minnesota with Bobendrier 9146 "Rare Stranger", the first place Spring Ram Lamb. The Reserve Champion Ram was shown by Rancho Royale from California with Rancho Royale 118 that was the second place Ram Lamb. The Champion Ewe was shown by Magic Valley Land and Livestock from Idaho with Deakin 90-634 "Marquis". The Reserve Champion Ewe was Price 4457 shown by Hope's Hampshires from Maryland. The first place Flock was shown by Magic Valley Land and Livestock who also was the Premier Exhibitor. Others showing in the Flock class were Tesconi Farms, Tunnell Farms, Rikow Hampshires and Dale Steffens.



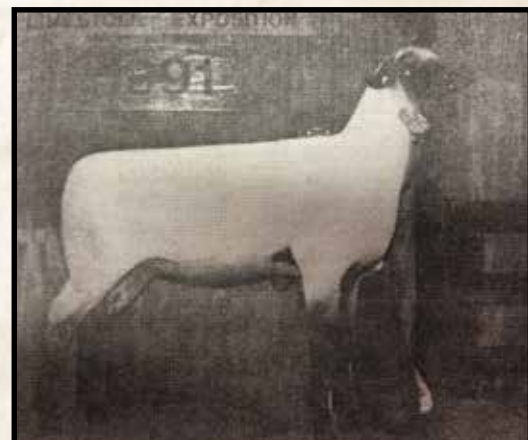
National Champion Ram
Bobendrier 9146 "Rare Strange"
Peter & Charles Bobendrier, MN



National Champion Ewe
Deakin 90-634 "Marquis"
Magic Valley Land and Livestock, ID



Reserve Champion Ram
Rancho Royale 118
Rancho Royal, CA



Reserve Champion Ewe
Price 4457
Hope's Hampshires, MD

North American International Livestock Exposition National Hampshire Show Results

Louisville, KY - November 18, 2019

Open Show Judges: Fitted- John Mrozinski, IN Slick-Shorn- Rocky Swearington, KS

-FITTED DIVISION-

YEARLING RAMS

1- Doug & Lindi Peterson, SD Peterson 9485 RR 1/19/18 604625 S: Peterson 9018-16009 RR 601357 D: Peterson 7332-1457 RR 60376D	2- Purple Incorporated, ND Plaza Hamps 1420 3/3/18 604501 S: Held 17-1893 RR-NNP 602279 D: Plaza Hamps 1150 RRNN 44310D	3- Kjeldgaard Farms, NE Kjeldgaard 18-953 RRET* Absolut* 2/4/18 604283 S: Willwerth Red 157 600420 D: Kjeldgaard 15-839 RR 59247D	4- Alf Hampshires, WI Alf 172-18 RRNN 3/2/18 604109 S: Alf 128-17 NNRR 602585 D: Alf 13-11 NN RR 31927D	5- Purple Incorporated, ND Plaza Hamps 1388 2/4/18 604491 S: Baa Baa Acres Anderson 219 RR 601507 D: Plaza Hamps 1215 50086D	6- Colin Deakin, IL C Deakin 18-2138 RRNN 11/15/17 604948 S: Bobendrier 13-83 NNP RR 597279 D: C Deakin 12-1745 QR AI 39805D
--	--	--	--	---	---

SENIOR RAM LAMBS

1- Doug & Lindi Peterson, SD Peterson 9726 RR 10/19/18 606754 S: BM WM 7-96 RR 604001 D: Peterson 7460-15548 60399D	2- Kathryn Person, IL Underwood 816 10/1/18 605702 S: Quam 4-129 RRNN AI 599567 D: Caskey 7748 RR 72256D	3- Bobendrier Hampshires, MN Bobendrier 18-179 NNP RR 9/8/18 606537 S: Bobendrier 17-38 NNP RR 602387 D: Bobendrier 13-166 NNP RR 48174D	4- Jenna Sullivan, CT Sullivan 1905 RRNN 10/2/15 605473 S: Sullivan 1802 603802 D: Rikow 5086 62832D
--	---	---	---

SENIOR CHAMPION RAM

Doug & Lindi Peterson, SD Peterson 9485 RR 1/19/18 604625 S: Peterson 9018-16009 RR 601357 D: Peterson 7332-1457 RR 60376D

RESERVE SENIOR CHAMPION RAM

Purple Incorporated, ND Plaza Hamp 1420 3/3/18 604501 S: Held 17-1893 RR-NNP 602279 D: Plaza Hamps 1150 RRNN 44310D
--

JANUARY RAM LAMBS

1- Purple Incorporated, ND Baa Baa Acres Anderson 299 1/15/19 605989 S: Baa Baa Acres Anderson 219 RR 601507 D: Baa Baa Acres Anderson 224 QR 63586D

2- Kriston Hill, NV Rabbit Creek 1902 1/21/19 606063 S: Rabbit Creek 1801 604362 D: Rabbit Creek 1506 NNP RR 56953D	3- Doug & Lindi Peterson, SD Peterson 9733 RR ET 1/9/19 606179 S: J and E Hamps 2-22 RR 'Homeboy' 59611 D: Peterson 9191-16013 RR 63238D	4- Bobendrier Hampshires, MN Bobendrier 19-07 NNP RR 1/5/19 605673 S: Bobendrier 17-47 NNP RR 603464 D: Bobendrier 16-51 NNP RR 61625D	5- Birschbach Hamps & Alf Hampshires, WI Plaza Hamps 1466 1/6/19 606128 S: Plaza Hamps 1342 602997 D: Plaza Hamps 1160 44315D	6- Pine Lawn Farms/Caskey Family Caskey 9380 RR 1/21/19 606504 S: Caskey 7636 RR 603534 D: Frame 3613 RR 47221D	7- Jeff Held, SD Held 19-2138 1/31/19 605623 S: Held 17-1951 NNP-RR 603914 D: Held 16-1798 NNP 61485D	8- Ethan Kennedy, NY Royal 906 1/10/19 605569 S: Willwerth Gray 13 RR 604311 D: Herrig 1081 RRNN 61403D	9- Ashton Daniels, MO Plaza Hamps 1467 AI 1/6/19 606125 S: Plaza Hamps 03-857 'Unleashed' 575188 D: Plaza Hamps 1256 57202D	10- Jenna Sullivan, CT Larson L & L 19-901 ET 1/13/19 606689 S: Larson L & L 17-752 ET 605175 D: Larson L & L 14-84 QR NN 49407D	11- Kathryn Person, IL K Person 19-02 1/19/19 605597 S: Quam 1141 RRNN ET 605043 D: K Person 12-02 69390D	12- Bill Chapin, Chapin Hamps, IL Chapin 206 RR NNP 1/20/19 605608 S: Chapin 152 RR NNP 600975 D: Chapin 633 NNP QR 67429D	13- Averi Smith, IA Schieffelbein 1907 RR 1/20/19 605668 S: Larson L&L 16-605 601631 D: Schieffelbein 1314 43508D	14- Larry Hand, MO Hand 903 RR NNP AI 1/16/19 606326 S: Hand 712 NNP QR 585147 D: Willwerth Red 146 RR 54203D	15- David Taylor, DLT Family Farms, NE DLT 1914 1/16/19 605683 S: Cahoon 443 602757 D: DLT 1524 NNQR 60036D	16- David Taylor, DLT Family Farms, NE DLT 1913 1/16/19 605682 S: Cahoon 443 602757 D: DLT 1524 NNQR 60036D
--	---	---	--	--	--	--	--	---	--	---	--	--	--	--

FEBRUARY RAM LAMBS

1- Doug & Lindi Peterson, SD Peterson 9842 RR 2/25/19 606755 S: Peterson 9335 RR 604637 D: Peterson 9272 RR 83806D	2- Purple Incorporated, ND Baa Baa Acres Anderson 308 2/5/19 605990 S: Held 17-1893 RR NNP 602279 D: Baa Baa Acres Anderson 260 70127D	3- Alf Hampshires, WI Alf 194-19 RRNN 2/2/19 605542 S: Caskey 4578 RR 598494 D: Bobendrier Boys 14-14 RR 49054D	4- Jenna Sullivan, CT Strawberry Fields 1901 2/3/19 606630 S: Niemeier 706 603004 D: Hickman 880 RR ET 36747D	5- Bobendrier Boys, MN Bobendrier Boys 19-44 RR 2/2/19 606464 S: Bobendrier 17-38 NNP RR 602387 D: Bobendrier Boys 15-33 58375D	6- Ethan Kennedy, NY Royal 909 2/7/19 606607 S: Willwerth Gray 13 RR 604311 D: Caskey 6463 RR 62805D	7- Bill Chapin, Chapin Hamps, IL Mumm 1927 RR 2/20/19 605782 S: Bobendrier Boys 15-16 RR 600107 D: Mumm 1566 QR 61635D	8- Danielle Houghtaling, SD Houghtaling 19-905 RRNNP 2/7/19 605578 S: Houghtaling 18-795 RRNNP 604480 D: Houghtaling 17-776 69007D
---	---	--	--	--	---	---	---

MARCH RAM LAMBS

1- Dalton Payne, MO Plaza Hamps 1509 3/15/19 606126 S: Baa Baa Acres Anderson 219 RR 601507 D: Plaza 1281 RR NN 63256D	2- Pine Lawn Farms/ Caskey Family, MN Caskey 9521 RR 3/1/19 606507 S: Caskey 7636 RR 603534 D: Caskey 6606 RR 66154D	3- Bobendrier Boys, MN Bobendrier Boys 19-60 3/9/19 606525 S: Bobendrier 16-174 NNP RR 'Rare Legend' 602380 D: Bobendrier Boys 17-11 QR 68117D	4- Doug & Lindi Peterson, SD Peterson 9911 RR 3/11/19 606182 S: Peterson 9282 RR 604622 D: Peterson 7516-15518 60401D	5- Bobendrier Boys, MN Bobendrier Boys 19-57 3/1/19 606526 S: Bobendrier 16-174 NNP RR 'Rare Legend' 602380 D: Bobendrier Boys 14-07 QR 49051D
---	---	---	--	---

PAIR OF RAM LAMBS

1- Purple Incorporated, ND	2- Doug & Lindi Peterson, SD	3- Pine Lawn Farms, MN	4- Bobendrier Boys, MN
----------------------------	------------------------------	------------------------	------------------------



- 5- Alf Hampshires, WI
 6- Bill Chapin - Chapin Hamps, IL
 7- David Taylor, NE

JUNIOR CHAMPION RAM

Purple Incorporated, ND
 Baa Baa Acres Anderson 299 1/15/19 605989
S: Baa Baa Acres Anderson 219 RR 601507
D: Baa Baa Acres Anderson 224 QR 63586D

RESERVE JUNIOR CHAMPION RAM

Kriston Hill, NV
 Rabbit Creek 1902 1/21/19 606063
S: Rabbit Creek 1801 604362
D: Rabbit Creek 1506 NNP RR 56953D



CHAMPION FITTED RAM

Doug & Lindi Peterson, SD
 Peterson 9485 RR 1/19/18 604625
S: Peterson 9018-16009 RR 601357
D: Peterson 7332-1457 RR 60376D



RES. CHAMPION FITTED RAM

Purple Incorporated, ND
 Baa Baa Acres Anderson 299 1/15/19 605989
S: Baa Baa Acres Anderson 219 RR 601507
D: Baa Baa Acres Anderson 224 QR 63586D

YEARLING EWES - CLASS A

- 1- Rikow Hamps, WI
 TIFFT 337 10/7/17 73109D
S: Quam 4-129 RRNN AI 599567
D: Caskey 5444 RR 57397D
- 2- Jenna Sullivan, CT
 Sullivan 1807 2/1/18 74392D
S: Sullivan 1701 603244
D: Quam 11362 RRNN ET 63302D
- 3- Pine Lawn Farms/Caskey Family, MN
 Caskey 8402 RR 1/22/18 76827D
S: Caskey 6448 RR 601838
D: Caskey 4455 RR 49789D

- 4- Gillmore-Davison Hampshires, NE
 Gillmore-Davison 18-07 2/2/18 74444D
S: Willwerth Purple 21 601685
D: Bobendrier 14-51 NNP QR 514767D
- 5- Bobendrier Hampshires, MN
 Bobendrier 18-04 NNP RR 1/2/18 74061D
S: Bobendrier 15-60 NNP RR 'Rare Rebel' 599125
D: Bobendrier 13-23 NNP RR 42591D
- 6- Purple Incorporated, ND
 Baa Baa Acres Anderson 268 2/2/18 76478D
S: Held 17-1893 RR-NNP 602279
D: S & C 64 44438D
- 7- Jenna Sullivan, CT
 Larson L & L 18-808 1/26/18 77113D
S: Strawberry Fields 1532 601991
D: Larson L & L 206 38530D

- 8- David & Barbara Lytle, PA
 Lytle 925 QR AI 1/26/18 76333D
S: Crome 0501 'Kentucky Proof' 581585
D: Peterson 9084-16017 RR 63241D
- 9- Bobendrier Hampshires, MN
 Bobendrier 18-16 NNP RR 1/3/18 74066D
S: Caskey 6422 RR 'Stealth' 601183
D: Bobendrier 15-161 NNP RR 61598D
- 10- Bobendrier Boys, MN
 Bobendrier Boys 18-40 RR 1/22/18 73404D
S: Bobendrier 16-67 NNP RR 'Rare Regard' 602117
D: Bobendrier Boys 14-28 RR 49060D
- 11- Dylan R.D. Klug, IA
 Klug HH 18-148T NNP QR 2/2/18 74134D
S: Klug HH 17-147P NNP RR 602403
D: Klug HH 16-194T QR 61331D
- 12- DLT Family Farm - David Taylor, NE
 Bobendrier Boys 18-11 RR 1/3/18 73399D
S: Caskey 6422 RR 'Stealth' 601183
D: Bobendrier Boys 16-46 RR 61891D
- 13- DLT Family Farms - David Taylor, NE
 Bobendrier Boys 18-09 RR 1/2/18 73398D
S: Caskey 6422 RR 'Stealth' 601183
D: Bobendrier Boys 15-03 RR 58369D

YEARLING EWES - CLASS B

- 1- Purple Incorporated, ND
 Baa Baa Acres Anderson 286 3/1/18 81137D
S: Baa Baa Acres Anderson 262 603264
D: Baa Baa Acres Anderson 221 RR 63583D
- 2- Rodney & Kathy Nelson, CO
 Nelson 18-24 RR 1/18/18 77138D
S: Alf 120-17NNRR 602584
D: Nelson 4064 RR 49751D
- 3- Pine Lawn Farms/Caskey Family, MN
 Caskey 8490 RR 2/9/18 76831D
S: Caskey 6448 RR 601838
D: Knox 12-23 40744D
- 4- Kjeldgaard Farms
 Kjeldgaard 18-951 RR 2/5/18 82035D
S: Willwerth Red 157 600420
D: Kjeldgaard 16-858 RR 'Adel' 64054D
- 5- Doug & Lindi Peterson, SD
 Peterson 9650 RR 3/2/18 83807D
S: Peterson 7175-3821 RR 596402
D: Peterson 7047 RR 60341D
- 6- Kjeldgaard Farms, NE
 Kjeldgaard 18-970 RR 3/11/18 74348D
S: Willwerth Red 157 600420
D: Kjeldgaard 16-865 RR 'Maid of Honor' 65497D
- 7- Ethan Kennedy, NY
 Royal 806 3/5/18 74986D
S: Rabbit Creek 1504 'Full Throttle' 599537
D: Bobendrier 14-44 NNP 52448D

- 8- Purple Incorporated, ND
 Baa Baa Acres Anderson 284 3/1/18 76479D
S: Held 17-1893 RR-NNP 602279
D: Baa Baa Acres Anderson 162 44467D
- 9- Rodney and Kathy Nelson, CO
 Nelson 18-50 QR 2/3/18 77147D
S: Peterson 9006-15553 600503
D: Nelson 15-42 QR 59115D

PAIR OF YEARLING EWES

- 1- Pine Lawn Farms, MN
 2- Purple Incorporated, ND
 3- David Taylor, NE

SENIOR EWE LAMBS

- 1- Alf Hampshires, WI
 Rikow 1139 9/9/18 80820D
S: Rikow 6063 'Fall Guy' 602210
D: Peterson 5760 RR 40394D
- 2- Bobendrier Hampshires, MN
 Sanford M904 9/12/18 80026D
S: Bobendrier 15-158 NNP RR 600808
D: Sanford M705 AI 67413D
- 3- Jenna Sullivan, CT
 Sullivan 1901 RRNN 10/10/18 79217D
S: Sullivan 1709 603248
D: Quam 5-235 RRNN ET 57052D
- 4- Jeff Held, SD
 Held 18-2068 NNP QR 10/10/18 79715D
S: Held 17-1923 QR NNP 603362
D: Held 15-1646 NNP RR 55144D
- 5- Marshall Sheep Co, SD
 BW WM 8-98 9/18/18 81902D
S: Larson L & L 17-732 603461
D: BM WM 645 RR 63253D
- 6- Bobendrier Hampshires, MN
 Bobendrier 18-182 NNP RR 9/8/18 79217D
S: Bobendrier 17-38 NNP RR 602387
D: Bobendrier 12-51 NNP RR 41426D
- 7- Kendall Smith, MO
 Spoonster 18-50 9/2/18 80244D
S: Baa Baa Acres Anderson 236 602360
D: Lambert 16-313 68217D
- 8- Kenzie Meyer, IL
 Sanford M903 RR 9/10/18 80025D
S: Bobendrier 15-158 NNP RR 600808
D: Sanford M 628 RR 61868D
- 9- Tingleigh Spoonster, MO
 Spoonster 18-52 9/5/18 80246D
S: Baa Baa Acres Anderson 236 602360
D: Spoonster 17-17 RR ET 67325D
- 10- Bill Chapin - Chapin Hamps, IL
 Chapin 668 RR NNP 10/9/18 79707D
S: Bobendrier 16-161 NNP RR 602637
D: Fleener 1301 42495D
- 11- Danielle Houghtaling, SD
 Houghtaling 18-867 RRNNP 9/18/18 79560D
S: Houghtaling 16-692 RR 601461
D: Houghtaling 16-674 RR 61535D

SENIOR CHAMPION EWE

Rikow Hamps, WI
 TIFFT 337 10/7/17 73109D
S: Quam 4-129 RRNN AI 599567
D: Caskey 5444 RR 57397D

RESERVE SENIOR CHAMPION EWE

Purple Incorporated, ND
 Baa Baa Acres Anderson 286 3/1/18 81137D
S: Baa Baa Acres Anderson 262 603264
D: Baa Baa Acres Anderson 221 RR 63583D

JANUARY EWE LAMBS

1- Brent Larson, SD			
Larson L & L 19-904	1/23/19	83527D	
S: Larson L & L 17-752 ET		605175	
D: Bobendrier 16-08 NNP RR		61606D	
2- Bobendrier Hampshires, MN			
Bobendrier 19-16 NNP RR	1/9/19	79991D	
S: Bobendrier 17-38 NNP RR		602387	
D: Bobendrier 14-47 NNP RR		52449D	
3- Purple Incorporated, ND			
Baa Baa Acres Anderson 297	1/4/19	81140D	
S: Baa Baa Acres Anderson 219 RR		601507	
D: Baa Baa Acres Anderson 256		70124D	
4- Mike Barnes, OH			
Barnes 9-01	1/28/19	81737D	
S: Willwerth Gray 29 QR		604357	
D: Caskey 2714 RR		40393D	
5- Alf Hampshires, WI			
Alf 184-19 RRNN	1/10/19	79497D	
S: Caskey 4578 RR		598494	
D: Alf 83-16 RR NN		62122D	
6- Jenna Sullivan, CT			
Sullivan 1907	1/11/19	79216D	
S: Sullivan 1802		603802	
D: Sullivan 1728		70074D	
7- Doug & Lindi Peterson, SD			
Peterson 9736 RR ET	1/10/19	83808D	
S: J and E Hamps 2-22 RR 'Home Boy' 596111			
D: Peterson 9191-16013 RR		63238D	
8- Jeff Held, SD			
Held 19-2126 NNP QR	1/26/19	79729D	
S: Held 17-1923 QR NNP		603362	
D: Held 14-1503 NNP RR		48157D	
9- Marshall Sheep Co, SD			
BM WM 906	1/5/19	80062D	
S: Larson L & L 16-613		80062	
D: BM WM 340		47162D	
10- Jenna Sullivan, CT			
Sullivan 1911	1/12/19	79221D	
S: Sullivan 1802		603802	
D: Strawberry Fields 1319		42910D	
11- Bobendrier Boys, MN			
Bobendrier Boys 19-22 RR	1/10/19	602380D	
S: Bobendrier 16-174NNPRR 'Rare Legend' 602380			
D: Klug HH 15-176 T NNP		54094D	
12- Kathryn Person, IL			
Cahoon 543	1/17/19	82445D	
S: Plaza Hamps 1144 RRNN 'Fire Water' 596867			
D: Cahoon 387		50748D	
13- Danielle Houghtaling, SD			
Houghtaling 18-879 QRNNP	1/10/19	81809D	
S: Houghtaling 16-663 QR		601459	
D: Houghtaling 15-659 RR		61540D	
14- Bill Chapin - Chapin Hamps, IL			
Chapin 674 RR NNP	1/25/19	79709D	
S: Bobendrier 16-161 NNP RR		602637	
D: Bobendrier 13-08 NNP RR		42596D	
15- Bobendrier Boys, MN			
Bobendrier Boys 19-18 RR	1/5/19	81025D	
S: Bobendrier 17-155 NNP 'Rare Legacy' 604146			
D: Bobendrier Boys 16-46 RR		61891D	
16- DLT Family Farms - David Taylor, MO			
DLT 1922	1/18/19	80055D	
S: Cahoon 443		602757	
D: DLT 1480		55529C	
17- DLT Family Farms - David Taylor, NE			
DLT 1917	1/16/19	80052D	
S: Cahoon 443		602757	
D: DLT 1280		55499D	

FEBRUARY EWE LAMBS

1- Jenna Sullivan, CT			
Sullivan 1917	2/4/19	79222D	
S: Sullivan 1802		603802	
D: Sullivan 1508		55656D	
2- Purple Incorporated, ND			
Baa Baa Acres Anderson 302	2/1/19	81143D	
S: Held 17-1893 RR NNP		602279	
D: Baa Baa Acres Anderson 210 RR		63580D	
3- Doug & Lindi Peterson, SD			
Peterson 9753 RR ET	2/3/19	83809D	
S: J and E Hamps 2-22 RR 'Home Boy' 596111			
D: Peterson 9191-16013 RR		63238D	
4- Ronald Pullin - Pullin's Hamps, IA			
Pullin 5-19	2/2/19	82322D	
S: Held 15-1656 NNP-RR		599087	
D: Herrig 0737 NN		27397D	
5- Kjeldgaard Farms, NE			
Kjeldgaard 19-994 RR ET	2/6/19	79303D	
S: Willwerth Gray 26 RR		604310	
D: Kjeldgaard 13-786 RR		42733D	
6- Alf Hampshires, WI			
Alf 198-19	2/3/19	79503D	
S: Alf 128-17 NNRR		602585	
D: Alf 21-13		43913D	
7- Kjeldgaard Farms, NE			
Kjeldgaard 19-3 RR ET	2/8/19	79308D	
S: Willwerth Gray 26 RR		604310	
D: Kjeldgaard 16-858 RR 'Adel'		64054D	
8- Jeff Held, SD			
Held 19-2160 NNP QR	2/17/19	79743D	
S: Held 15-1718 NNP		600762	
D: Held 16-1837 QR NNP		67134D	
9- Rikow Hamps, WI			
Rikow 9034	2/16/19	80828D	
S: Rikow 8054 'Dagwood'		603958	
D: Rikow 5031		57041D	
10- Ronald Pullin - Pullin's Hamps, IA			
Pullin 4-19	2/1/19	18380D	
S: Held 17-1912 RR NNP		602283	
D: Pullin 1616		61939D	
11- Ethan Kennedy, NY			
Royal 908	2/6/19	79552D	
S: Willwerth Gray 13 RR		604311	
D: Bobendrier 14-44 NNP		52448D	
12- Danielle Houghtaling, SD			
Houghtaling 19-923 RRNNP	2/19/19	81814D	
S: Houghtaling 17-739 QRNNP		603683	
D: Houghtaling 16-677 RR		61536D	

MARCH EWE LAMBS

1- Kjeldgaard Farms			
Kjeldgaard 19-9 RR	3/8/19	82031D	
S: Willwerth Gray 26 RR		604310	
D: Kjeldgaard 13-786 RR		42733D	
2- Pine Lawn Farms - Caskey Family, MN			
Caskey 9544 RR	3/4/19	82670D	
S: Held 15-1742 NNP QR		600767	
D: Caskey 6449 RR		66166D	
3- Jenna Sullivan, CT			
Sullivan 1933	3/2/19	82299D	
S: Strawberry Fields 1806		605247	
D: Sullivan 1801		72325D	
4- Jenna Sullivan, CT			
Strawberry Fields 1914	3/1/19	83121D	
S: Strawberry Fields 1626		600957	
D: Strawberry Fields 0914		33250D	

5- Purple Incorporated, ND			
Plaza Hamps 1505	3/7/19	83401D	
S: Plaza Hamps 1420		604501	
D: Plaza Hamps 1359		69272D	
6- Tineigh Spoonster, MO			
Spoonster 19-12	3/6/19	80251D	
S: Spoonster 18-01		604804	
D: Epley 7084		65761D	
7- Ethan Kennedy, NY			
Royal 911	3/2/19	82992D	
S: Willwerth Gray 13 RR		604311	
D: Held 17-1895 RR NNP		67152D	
8- Pine Lawn Farms/ Caskey Family, MN			
Caskey 9572 RR	3/10/19	82671D	
S: Held 15-1742 NNP QR		600767	
D: Caskey 7619 RR		70914D	
9- Kjeldgaard Farms, NE			
Kjeldgaard 19-15 QR	3/11/19	82034D	
S: Willwerth Gray 26 RR		604310	
D: Kjeldgaard 13-783 QR		42731D	
10- Tineigh Spoonster, MO			
Spoonster 19-45	3/17/19	83824D	
S: Spoonster 18-01		604804	
D: Spoonster 17-21 RR		67318D	
11- Kenzie Meyer, IL			
Meyer 1954	3/5/19	82373D	
S: Meyer 1414		598465	
D: Meyer 1218		39396D	
12- Bobendrier Hampshires, MN			
Bobendrier 19-76 NNP RR	3/2/19	80013D	
S: Bobendrier 18-19 NNP RR 'Rare Jd' 604150			
D: Bobendrier 17-158 NNP RR		74050D	
13- Dylan R. D. Klug, IA			
Klug HH 19-103T NNP RR	3/4/19	79820D	
S: Klug HH 17-134 NNP RR		602402	
D: Lytle 879 NNP RR		67739D	
14- Kathryn Person, IL			
K Person 19-11	3/22/19	79661D	
S: Quam 11411 RRNN ET		605043	
D: Rikow 4053		57037D	
15- Connley Hoagland, MT			
Spoonster 19-11	3/4/19	80250D	
S: Baa Baa Acres Anderson 236		602360	
D: Rikow 6056		66798D	
16- Danielle Houghtaling, SD			
Houghtaling 19-926 RRNNP	3/2/19	79562D	
S: Pullin 1619		600907	
D: Houghtaling 14-512 RR		50231D	

PAIR OF EWE LAMBS

1- Bobendrier Hampshires, MN			
2- Pine Lawn Farms, MN			
3- Jenna Sullivan, CT			
4- Purple Incorporated, ND			
5- Pullin's Hamps, IA			
6- Jeff Held, SD			
7- DLT Farms, NE			

JUNIOR CHAMPION EWE

Jenna Sullivan, CT			
Sullivan 1917	2/4/19	79222D	
S: Sullivan 1802		603802	
D: Sullivan 1508		55656D	

RESERVE JUNIOR CHAMPION EWE

Brent Larson, SD			
Larson L & L 19-904	1/23/19	83527D	
S: Larson L & L 17-752 ET		605175	
D: Bobendrier 16-08 NNP RR		61606D	





CHAMPION FITTED EWE

Rikow Hamps, WI
 TIFFT 337 10/7/17 73109D
 S: *Quam 4-129 RRNN AI* 599567
 D: *Caskey 5444 RR* 57397D



RES. CHAMPION FITTED EWE

Purple Incorporated, ND
 Baa Baa Acres Anderson 286 3/1/18 81137D
 S: *Baa Baa Acres Anderson 262* 603264
 D: *Baa Baa Acres Anderson 221 RR* 63583D

PREMIER EXHIBITOR

Purple Incorporated, ND

-SLICK-SHORN DIVISION-

YEARLING RAMS

- 1- Alivia, Braylon & Ainsley Poarter, IL
 Truck Yeah Storms 743 3/20/18 604530
 S: *Storms 661 AI* 603483
 D: *Storms 519* 49562D
- 2- Henry Hampton, NC
 Lazy 5 3114 ET 1/5/18 604756
 S: *Slack 7103* 602834
 D: *Lazy 5 2920* 59097D
- 3- Henry Hampton, NC
 Lazy 5 3112 9/3/17 604754
 S: *Williams 5656* 599700
 D: *Lazy 5 2757* 52467D

FALL RAM LAMBS

- 1- Kylie Schakel, IN
 Flanders VIP 8127 RRNN ALX 10/9/18 605520
 S: *Alexander 1744 ET* 603411
 D: *Flanders VIP 4064* 49119D

JANUARY RAM LAMBS

- 1- Mason, Dylan & Colton Miller, IN
 Slack 9141 1/18/19 606681
 S: *Slack 4275 'Trackside'* 599619
 D: *Slack 5580* 59004D

- 2- Izzy Wade, IN
 Wade 901 AI 1/4/19 606197
 S: *Impact 13067 ET* 597191
 D: *Feller 427* 49309D

FEBRUARY RAM LAMBS

- 1- Morgan & Madison Hauger, IN
 Hauger 19051 2/6/19 606211
 S: *Hauger 0245* 601627
 D: *Poe 5063 -15 AI* 56204D
- 2- Sara, Jacee & Justin Johnson, WI
 Johnson 2001 2/23/19 605953
 S: *J Johnson 15-R1* 603639
 D: *J Johnson 1120* 71251D
- 3- Van Cleave Hamps, IL
 Van Cleave G-1970 RRNNFF AI 2/1/19 606677
 S: *R Estes 6075* 603394
 D: *Van Cleave O-1624* 65174D
- 4- NOC Sheep Center, OK
 NOC CHT-6369-9009 2/2/19 606583
 S: *NOC PMB-4079-8172* 605146
 D: *NOC CM-6104-8057* 76968D
- 5- Land Run Hamps, OK
 Land Run 562 RRNN 2/16/19 605710
 S: *Land Run 486* 602551
 D: *NOC RM-273-6004* 64762D
- 6- Alivia Porter, IL
 Storms 812 2/17/19 605750
 S: *Storms 711 AI* 604102
 D: *Storms 590 AI* 61461D
- 7- Alivia, Braylon & Ainsley Porter, IL
 Storms 835 AI 'Pizazz' 2/24/19 605824
 S: *Williams 5656* 599700
 D: *Northern Oklahoma GM-2163-4086* 51757D
- 8- Henry Hampton, NC
 Lazy 5 3222 ET 2/15/19 606092
 S: *Lazy 5 2910 ET* 600101
 D: *Lazy 5 2757* 52467D
- 9- Celia Dodd, TN
 CTF 0096 2/1/19 606008
 S: *Scarlet Acres 1602* 601788
 D: *Meeks 124* 64342D

MARCH RAM LAMBS

- 1- Adriana Wendland, MN
 NSLS 19202 ET 3/14/19 606758
 S: *NSLS 15299 ET* 602604
 D: *Rule RSC 7444 ET* 69452D
- 2- Adriana Wendland, MN
 NSLS 19238 AI 3/15/19 606757
 S: *NSLS 19238 AI* 602604
 D: *Dee Brothers 3108 ET* 45225D
- 3- Henry Hampton, NC
 Lazy 5 3280 4/18/19 606734
 S: *Lazy 5 3112* 604754
 D: *Lazy 5 3104* 71240D
- 4- Henry Hampton, NC
 Lazy 5 3224 ET 3/1/19 606094
 S: *Lazy 5 2910 ET* 600101
 D: *Lazy 5 2920* 59097D
- 5- Henry Hampton, NC
 Lazy 5 3282 4/18/19 606735
 S: *Lazy 5 3112* 604754
 D: *Lazy 5 2978* 69664D
- 6- Sidney McAllister, OH
 AOG 7276 3/20/19 606054
 S: *BWF 100* 603062
 D: *CARR 1705* 68770D

PAIR OF RAM LAMBS

- 1- Adriana Wendland, MN
- 2- Henry Hampton, NC
- 3- Alivia, Braylon & Ainsley Porter, IL



CHAMPION SLICK SHORN RAM

Alivia, Braylon & Ainsley Porter, IL
 Truck Yeah Storms 743 3/20/18 604530
 S: *Storms 661 AI* 603483
 D: *Storms 519* 49562D



RES. CHAMPION SLICK-SHORN RAM

Adriana Wendland, MN
 NSLS 19202 ET 3/14/19 606758
 S: *NSLS 15299 ET* 602604
 D: *Rule RSC 7444 ET* 69452D

YEARLING EWES - CLASS A

- 1- Ty Thorson, WI
 Metro 1849 2/17/18 73720D
 S: *Miller O-836 ET* 603316
 D: *Metro 1604* 61548D
- 2- Morgan & Madison Hauger, IN
 Hauger 0402 2/10/18 75099D
 S: *Hauger 0245* 601627
 D: *Poe 5063-15 AI* 56204D
- 3- Ty Thorson, WI
 Metro 1824 1/3/18 73732D
 S: *Impact 14091* 598704
 D: *Metro 1527* 54490D
- 4- Adriana Wendland, MN
 NSLS 18011 AI 1/29/18 75666D
 S: *NSLS 14159 QR 'Liquid Courage'* 600271
 D: *NSLS 13291* 44609D
- 5- Jordyn Leininger, IN
 Slack 8162 Z 2/8/18 75907D
 S: *Slack H 5228* 601055
 D: *Slack 5662* 72721D
- 6- Kylie Schakel, IN
 Flanders VIP 8749 OCD AI 1/2/18 74864D
 S: *Rule RSC 5069 'OCD' ET* 602789
 D: *Flanders VIP 6289 AI* 61784D

7- Kylie Schakel, IN
 Flanders VIP 8862 LL 2/15/18 74881D
S: Flanders VIP 5066 AI 598965
D: Flanders VIP 6141 61794D

8- Alivia, Braylon & Ainsley Porter, IL
 Storms 716 2/15/18 73937D
S: Williams 5656 599700
D: Storms 526 49563D

9- Campbell, Corbin & Clark Coyle, KY
 Terradise 8003 1/3/19 605659D
S: Poe A7151-17 AI 602664
D: Terradise 1306 AI 42767D

10- Land Run Hamps, OK
 Land Run 1803 RRNN 1/31/18 74331D
S: Slack 6329 601245
D: Land Run 1501 RRNN 55614D

11- Brodie Payne, MO
 Plaza Hamps 1386 2/3/18 75039D
S: Ellerbrock 1920 600412
D: Plaza 1311 RRNN 63266D

12- Campbell, Corbin & Clark Coyle, KY
 Poe 8029-18 AI 12/9/17 74471D
S: Poe 9118-09 588705
D: Poe 3046-13 51785D

13- Celia Dodd, TN
 BFL 1810 2/2/18 73373D
S: Scarlet Acres 1602 601788
D: Meeks 118 58205D

14- Madalyn Crouch, IN
 Slack 8442 1/16/18 78746D
S: Slack H 5228 601055
D: Slack 3408 47291D

YEARLING EWES - CLASS B

1- Henry Hampton, NC
 Lazy 5 3183 3/20/18 77824D
S: Lazy 5 2910 ET 600101
D: Lazy 5 2517 AI 50976D

2- Kyndle Cain, TX
 Lanier W8017 3/1/18 77349D
S: Lanier B-4140 598634
D: Lanier Y6023 65122D

3- Adriana Wendland, MN
 NSLS 18211 AI 3/12/18 83811D
S: NSLS 15299 ET 602604
D: Harrell 5172 63180D

4- Kylie Schakel, IN
 Flanders VIP 8825 UP 3/13/18 74875D
S: Alexander 1744 ET 603411
D: Flanders VIP 5069 AI 54446D

5- Henry Hampton, NC
 Lazy 5 3168 ET 2/27/18 75797D
S: Slack 7103 602834
D: Lazy 5 2920 59097D

6- Campbell, Corbin & Clark, KY
 Terradise 8055 3/5/18 74624D
S: Poe A7151-17 AI 602664
D: Poe A7133-17 AI 68325D

7- Sara, Jacee & Justin Johnson, WI
 J Johnson 1601 2/20/18 76023D
S: J Johnson 15-R2 603640
D: J Johnson 943 71271D

8- Erin Israel, FL
 Fischer 0257 AI 5/25/18 82822D
S: Allred/Elliott 7113 603746
D: Ellerbrock 4054 63616D

9- Ty Thorson, WI
 Rupnow 1325 3/3/18 73724D
S: Miller O-836 ET 603316
D: Rupnow 1111 61547D

10- NOC Sheep Center, OK
 NOC CM-5062-8140 4/7/18 76976D
S: NOC GM-3136-6088 'Game Over' 601908
D: NOC GM-230-5062 58893D

11- Henry Hampton, NC
 Lazy 5 3152 ET 3/1/18 75784D
S: Slack 7103 602834
D: Lazy 5 2920 59097D

12- Land Run Hamps, OK
 Land Run 1808 RRNN 3/4/18 74336D
S: Land Run 486 602551
D: Land Run 1651 RRNN 66009D

13- Kylie Moubry, IL
 Kleinert 5190 3/2/18 77710D
S: Miller O-470 598790
D: Kleinert 4571 56171

PAIR OF YEARLING EWES

1- Adriana Wendland, MN
 2- Henry Hampton, NC
 3- Kylie Schakel, IN
 4- Ty Thorson, WI

SENIOR EWE LAMBS

1- Morgan Hauger, IN
 Poe 19113 AI 12/16/18 80514D
S: Impact 13067 ET 597191
D: Poe 7334 AI 71340D

2- Jerry Flanders, IN
 Flanders VIP 8129 10/17/18 79415D
S: Alexander 1744 ET 603411
D: Flanders VIP 6195 61793D

3- Clark Coyle, KY
 Poe 19028 AI 12/5/18 80495D
S: Impact 13067 ET 597191
D: Poe 5306-15 AI 78537D

4- Loyal Burns IV, OR
 Burns 1960 12/29/18 81049D
S: Tewalt 18205 604418
D: Burns 1755 67863D

5- Henry Hampton, NC
 Lazy 5 3202 ET 9/2/18 79115D
S: Lazy 5 2950 ET 602220
D: Lazy 5 2944 ET 64411D

6- Henry Hampton, NC
 Lazy 5 3203 ET 9/3/18 79116D
S: Lazy 5 2950 ET 03869
D: Lazy 5 2944 ET 64411D

SENIOR CHAMPION EWE

Henry Hampton, NC
 Lazy 5 3183 3/20/18 77824D
S: Lazy 5 2910 ET 60010
D: Lazy 5 2517 AI 50976D

RESERVE SENIOR CHAMPION EWE

Ty Thorson, WI
 Metro 1849 2/17/18 73720D
S: Miller O-836 ET 603316
D: Metro 1604 61548D

JANUARY EWE LAMBS - CLASS A

1- Madeline, Samuel & Josie Baynes, IN
 Mattingly 1995/1141 1/10/19 80893D
S: Poe 9516-10 592204
D: Mattingly 1763 62585D

2- Kylie Schakel, IN
 Flanders VIP 9140 1/2/19 79420D
S: Alexander 1744 ET 603411
D: Flanders VIP 6289 AI 61784D

3- Ty Thorson, WI
 Rupnow 1932 1/8/19 79942D
S: Miller O-836 ET 603316
D: Rupnow 1045 49345D

4- Tim & Sarah Fleener, PA
 Fleener 1905 AI 1/2/19 79770D
S: Dee Brothers DB 9210 588803
D: Fleener 1410 48273D

5- Ty Thorson, WI
 Metro 1921 1/1/19 79920D
S: Miller O-836 ET 603316
D: Metro 1527 54490D

6- Garrett Friesen, IN
 Friesen 1924 1/6/19 82717D
S: Fairley 2923 'Atlas' 604318
D: Wheaton 6-162 ET RR 66314D

7- Campbell Coyle, KY
 Terradise 9014 1/10/19 79895D
S: Poe A7151-17 AI 602664
D: Terradise 6111 62029D

8- Henry Hampton, NC
 Lazy 5 3228 ET 1/1/19 81449D
S: Lazy 5 2950 ET 602220
D: Lazy 5 2920 59097D

9- Mason, Dylan & Colton Miller
 Slack 9179 1/2/19 81798D
S: Slack 4118 'Bottoms Up' 599620
D: Slack 3279 47270D

10- Ty Thorson, WI
 Rupnow 1904 AI 1/1/19 79912D
S: Metro O-836 ET 603316
D: Rupnow 1105 34165D

11- Izzy Wade, IN
 Wade 902 AI 1/4/19 81704D
S: Impact 13067 ET 597191
D: Feller 427 49309D

12- Linsey Eddy, OH
 Westlake 0925 1/6/19 81852D
S: Westlake 825 604547
D: Westlake 0700 71828D

13- Kenyon Buckland, IN
 Flanders VIP 9166 1/8/19 79434D
S: Alexander 1744 ET 603411
D: Flanders VIP 4102 49114D

14- Chloe Stonesifer, PA
 Fleener 1920 1/3/19 79773D
S: Allen Show Lambs IA2210 G299 ET 601449
D: Fleener 1786 71767D

15- Madeline, Samuel & Josie Baynes, IN
 Mattingly 1997/1140 1/10/19 80892D
S: Poe 9516-10 592204
D: Mattingly 1763 62585D

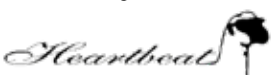
JANUARY EWE LAMBS - CLASS B

1- Olivia Waggoner, PA
 Dee Brothers LLC 9041 1/28/19 79490D
S: Dee Brothers LLC 4145 598808
D: Dee Brothers LLC 5310 60095D

2- Loyal Burns IV, OR
 Burns 1967 1/20/19 81051D
S: Tewalt 18205 604418
D: Burns 1650 62301D

3- Kylie Schakel, IN
 Flanders VIP 9158 1/17/19 79432D
S: Alexander 1744 ET 603411
D: Flanders VIP 6145 ET RRNN 61799D

4- Sara, Jacee & Justin Johnson, WI
 Johnson 2041 1/18/19 80947D
S: J Johnson 15-R1 603639
D: J Johnson 970 71270D



5- Henry Hampton, NC Lazy 5 3229 AI 1/16/19 81450D S: Lazy 5 2950 ET 602220 D: Lazy 5 2500 AI 45257D	8- Loyal Burns VI, OR Burns 1971 2/8/19 81052D S: Tewalt 18205 604418 D: Burns 1775 67865D	5- Jordyn Leininger, IN Slack 9288 AI 2/16/19 81422D S: Impact 17018 603269 D: Slack 6216 68706D
6- Morgan & Madison Hauger, IN Hauger 19010 1/30/19 81379D S: Poe 8037-18 604805 D: Poe A7240-17 68336D	9- Ty Thorson, WI Metro 1959 2/1/19 79951D S: Miller O-836 ET 603316 D: Metro 013 24667D	6- Callie Taylor, PA Jadewood 4246 2/21/19 83265D S: Shroyer 827 Orange ET 'Liquid Gold' 602302 D: Flanders VIP 4953 ET 49218D
7- Sidney McAllister, OH Hull 9004 AI 1/20/19 81953D S: Impact 16028 ET 602141 D: Hull 6057 62525D	10- Mason, Dylan & Colton Miller, IN Slack 9109 AI 2/3/19 81795D S: Impact 17018 603269 D: Slack H 5229 62364D	7- Aspen Jobe, PA Painter 0461 2/14/19 83551D S: Begalka 7271 602930 D: Wheaton 6-113 RR 66341D
8- Kyndle Cain, TX Lanier 9118 1/13/19 83241D S: Lanier W7077 606582 D: Lanier B582 59046D	11- Mekenna & Lisa Franklin, IN Franklin SS 021 2/11/19 83557D S: Ellerbrock 5232 ET 604982 D: Smith 1353 67693D	8- Ariana Spina, OH AOG 7242 2/16/19 81347D S: BWF 100 603062 D: Daniels 627 61317D
9- Clark Coyle, KY Terradise 9016 1/16/19 79897D S: Poe A-7151-17 AI 602664 D: Terradise 6133 62032D	12- NOC Sheep Center, OK NOC TO-5094-9078 ET 2/5/19 82763D S: NOC CM-1560-7182 'Puppy Monkey Baby' 600086 D: NOC GM-1086-5094 58901D	9- Mason, Dylan & Colton Miller, IN Slack 9304 2/13/19 81796D S: Slack 3337 'Ringside' 603316 D: Slack 7493 68884D
10- Madalyn Crouch, IN MadJack 201718 1/15/19 82786D S: JFSS 5040 AI 'Big Sexy' 599641 D: Harms R-72 63064D	13- Sallie Everhart, IN Poe 19297 AI 2/4/19 80500D S: Impact 13067 ET 597191 D: Poe 5366-15 AI 78543D	10- Madeline, Samuel & Josie Baynes, IN Mattingly 2029/1197 2/14/19 80894D S: Poe 9516-10 592204 D: Mattingly 1752 62589D
11- Samantha & Sallie Everhart, IN Unger 0019 AI 1/29/19 80111D S: MacClennan 916-14 'Fort Worth' 598771 D: Hanson Farms 0364 70317D	14- NOC Sheep Center, OK NOC TO-3076-9064 ET 2/2/19 82757D S: NOC CM-1560-7182 'Puppy Monkey Baby' 603480 D: Northern Oklahoma WF-74-3076 45844D	11- Campbell Coyle, KY Poe 19350 AI 2/22/19 80496D S: Impact 13067 ET 597191 D: Poe 7309 AI 71336D
12- Kurt & Miranda Fleener, PA Hunter 9-01 1/12/19 79830D S: Fleener 1830 604126 D: Poe 6342-16 71828D	15- Clark Coyle, KY Terradise 9027 2/2/19 79899D S: Poe A7151-17 AI 602664 D: Miller P-4962 ET 53423D	12- Alli Jobe, PA Painter 0422 2/14/19 83550D S: Begalka 7271 602930 D: Wheaton 6-113 RR 66341D
13- Dalton Payne, MO Plaza Hamps 1470 1/26/19 81862D S: Swearingen SS 17-02 AI 603608 D: Plaza Hamps 1315 69274D	16- Brodie Payne, MO Plaza Hamps 1474 2/7/19 81861D S: Swearingen SS 17-02 AI 603608 D: Plaza Hamps 1226 57189D	13- Corbin Coyle, KY Poe 19283 AI 2/16/19 80461D S: Poe 6065-16 AI 602665 D: Poe 6461-15 AI 78939D
14- Land Run Hamps, OK Land Run 550 RRNN ET 1/31/19 80285D S: Slack 4118 'Bottoms Up' 599620 D: Land Run 291 RRNN 43279D	17- Ty Thorson, WI Rupnow 1966 2/2/19 79930D S: Miller O-836 ET 603316 D: Rupnow 1111 61547D	14- Alivia, Braylon & Ainsley Porter, IL Storms 811 2/17/19 80278D S: Storms 711 AI 604102 D: Storms 590 AI 61461D
FEBRUARY EWE LAMBS - CLASS A		
1- Linsey Eddy, OH Westlake 0920 2/11/19 81855D S: Westlake 825 604547 D: Westlake 0735 71827D	18- Jordyn Leininger, IN Slack 9382 2/5/19 81426D S: Slack 4118 'Bottoms Up' 599620 D: Slack 5533 57244D	MARCH EWE LAMBS
2- Addison Winger, IN Rule 0644 2/2/19 83478D S: Rule 1874 ET 604741 D: Barnett 1429 53186D	19- NOC Sheep Center, OK NOC SY-5062-9034 AI 2/1/19 82751D S: Harrell 4231 'Shoot Yeah' 601319 D: NOC GM-230-5062 58893D	1- Fleener Club Lambs, PA FCL 1942 3/23/19 80793D S: Allen Show Lambs IA2210 G299 ET 601449 D: FCL 1601 62421D
3- Kylie Schakel, IN Flanders VIP 9145 2/2/19 79421D S: Flanders VIP 8795 RRNN Up 604438 D: Flanders VIP 5080 AI 54452D	20- Land Run Hamps, OK Land Run 551 RRNN ET 2/1/19 80286D S: Slack 4119 'Bottoms Up' 599620 D: Land Run 291 RRNN 43279D	2- Tim & Sarah Fleener, PA Fleener 1980 3/2/19 82356D S: Fleener 1830 604126 D: Fleener 1223 40022D
4- Adriana Wendland, MN NSLS 9010 AI 2/1/19 83070D S: NSLS 15299 ET 602604 D: Hardin 0180 76465D	FEBRUARY EWE LAMBS - CLASS B	
5- Sara, Jacee & Justin Johnson, WI Johnson 1962 2/8/19 80952D S: J Johnson 15-R1 603639 D: J Johnson 967 71273D	1- Morgan & Madison Hauger, IN Hauger 19018 2/17/19 81378D S: Hauger 0245 601627 D: Poe 3094-13 44397D	3- Linsey Eddy, OH Westlake 0908 3/2/19 81858D S: Westlake 825 604547 D: Westlake 0800 75161D
6- NOC Sheep Center, OK NOC TO-4079-9066 ET 2/2/19 82759D S: NOC CM-1560-7182 'Puppy Monkey Baby' 596582 D: Northern Oklahoma QC-319-4073 51752D	2- Jerry Flanders, IN Flanders VIP 9045 2/21/19 79455D S: Flanders VIP 8795 RRNN Up 604438 D: Flanders VIP 6284 AI 61787D	4- Morgan & Madison Hauger, IN Hauger 19111 3/4/19 81729D S: Hauger 0245 601627 D: Hauger 0288 69677D
7- Tim & Sarah Fleener, PA Fleener 1966 2/1/19 82353D S: Fleener 1830 604126 D: Fleener 1768 67502D	3- Fleener Club Lambs, PA FCL F918 ET 2/18/19 80802D S: Dee Brothers LLC 3245 598817 D: FCL 1504 'Phebe' 56089D	5- Garrett Friesen, IN Slack 9409 AI 3/4/19 83491D S: Impact 17018 603269 D: Slack 5593 63164D
	4- Sara, Jacee & Justin Johnson, WI Johnson 2016 2/20/19 80950D S: J Johnson 15-R1 603639 D: J Johnson 1617 71268D	6- Kylie Schakel, IN Flanders VIP 9069 3/1/19 79613D S: Alexander 1744 ET 603411 D: Flanders VIP 6132 61807D
		7- Loyal Burns IV, OR Burns 1987 3/19/19 81055D S: Tewalt 18205 604418 D: Kleinert 5030 71778D

- 8- Sara, Jacee & Justin Johnson, WI
Johnson 1616 3/27/19 80969D
S: J Johnson 15-R1 603639
D: J Johnson 1517 71265D
- 9- Sara, Jacee & Justin Johnson, WI
Johnson 2007 3/10/19 80951D
S: Johnson 2007 603639
D: J Johnson 940 71275D
- 10- Adriana Wendland, MN
NSLS 19207 ET 3/14/19 83812D
S: NSLS 15299 ET 602604
D: Rule RSC 7444 ET 69452D
- 11- Kurt & Miranda Fleener, PA
Dee Brothers LLC 9021 3/9/19 79492D
S: Dee Brothers LLC 4145 598808
D: Dee Brothers LLC 2154 44039D
- 12- NOC Sheep Center, OK
NOC WB-7146-9148 4/12/19 82778D
S: NOC CM-3076-8051 605233
D: NOC CM-4146-7146 70768D
- 13- Madeline, Samuel & Josie Baynes, IN
Mattingly 1967 3/8/19 83553D
S: Poe 9516-10 592204
D: Mattingly 1759 62587D
- 14- Madeline, Samuel & Josie Baynes, IN
Mattingly 1975/1118 3/7/19 80896D
S: Poe 9516-10 592204
D: Mattingly 1668 52473D
- 15- Jordyn Leininger, IN
Slack 9369 AI 3/2/19 81423D
S: Impact 17018 603269
D: Slack 7646 72789D
- 16- Henry Hampton, NC
Lazy 5 32445 3/7/19 81459D
S: Lazy 5 2504 AI 596670
D: Lazy 5 2988 69650D
- 17- Sidney McAllister, OH
AOG 7263 3/12/19 82477D
S: BWF 100 603062
D: Miller P-5010 ET 60748D
- 18- Alivia, Braylon & Ainsley Porter, IL
Storms 841 3/8/19 81215D
S: Storms 687 606020
D: Storms 519 49562D
- 19- Van Cleave Hamps, IL
Van Cleave G-1944 3/5/19 83418D
S: Van Cleave G-1899 QR 605287
D: Van Cleave O-1408 RRNN 52428D

PAIR OF EWE LAMBS

- 1- Fleener Club Lambs, PA
2- Linsey Eddy, OH
3- Kylie Schakel, IN
4- Morgan & Madison Hauger, IN
5- Garrett Friesen, IN
6- Jacee Johnson, WI
7- Loyal Burns IV, OR
8- Alivia Porter, IL

JUNIOR CHAMPION EWE

- Madeline, Samuel & Josie Baynes, IN
Mattingly 1995/1141 1/10/19 80893D
S: Poe 9516-10 592204
D: Mattingly 1763 62585D

RESERVE JUNIOR CHAMPION EWE

- Linsey Eddy, OH
Westlake 0920 2/11/19 81855D
S: Westlake 825 604547
D: Westlake 0735 71827D



CHAMPION SLICK-SHORN EWE

- Madeline, Samuel & Josie Baynes, IN
Mattingly 1995/1141 1/10/19 80893D
S: Poe 9516-10 592204
D: Mattingly 1763 62585D



RES. CHAMPION SLICK-SHORN EWE

- Henry Hampton, NC
Lazy 5 3183 3/20/19 77824D
S: Lazy 5 2910 ET 600101
D: Lazy 5 2517 AI 50976D

PREMIER SLICK-SHORN EXHIBITOR

Lazy 5 Ranch, NC



GRAND CHAMPION EWE

- J Rikow Hamps, WI
TIFFT 337 10/7/17 73109D
S: Quam 4-129 RRNN AI 599567
D: Caskey 5444 RR 57397D



RES. GRAND CHAMPION EWE

- Madeline, Samuel & Josie Baynes, IN
Mattingly 1995/1141 1/10/19 80893D
S: Poe 9516-10 592204
D: Mattingly 1763 62585D



BEST HEADED EWE

- Purple Circle Incorporated, ND
Baa Baa Acres Anderson 284 3/1/18 76479D
S: Held 17-1893 RR-NNP 602279
D: Baa Baa Acres Anderson 162 44467D



GRAND CHAMPION RAM

- Alivia, Braylon & Ainsley Porter, IL
Truck Yeah Storms 743 3/20/18 604530
S: Storms 661 AI 603483
D: Storms 519 49562D



RESERVE GRAND CHAMPION RAM

Doug & Lindi Peterson, SD
 Peterson 9485 RR 1/19/18 604625
 S: Peterson 9018-16009 RR 601357
 D: Peterson 7332-1457 RR 60376D



YOUNG FLOCK

1- Purple Incorporated, ND



MIXED PAIR - BRED AND OWNED

1- Bobendrier Hampshires, MN



BEST HEADED RAM

Kathryn Person, IL
 Underwood 816 10/1/18 605702
 S: Quam 4-129 RRNN AI 599567
 D: Caskey 7748 RR 72256D



FLOCK

- 1- Purple Incorporated, ND
- 2- Kylie Schakel, IN
- 3- Bobendrier Hampshires, MN
- 4- Henry Hampton, NC



FINDER
 Hampshires,
 Katahdins &
 Maremma Livestock
 Guardian Dogs



WARREN & PAM FINDER
 Warren for sheep: (620) 532-1327 14715 W. Maple Grove Rd.
 Pam for dogs: (620) 491-1087 Kingman, KS 67068
 finderhampshires@gmail.com facebook.com/FinderHampshires

2020 JUNE 22-27 MIDWEST SALE SCHEDULE

Tentative as of 11/15/19, Subject to Change before Final Publication in Catalog

MONDAY – JUNE 22nd

Sheep Barn

9am - Junior Shows Judge: TBD
LeRoy Boyd Katahdin Junior Show, Jim & Dorothy Handy Montadale Junior Show
National Corriedale Junior Show, National Texel Junior Show

TUESDAY – JUNE 23rd

Sheep Barn

8am - Katahdin Show Judge: Evan Snyder
Montadale Show Judge: Alex Wolf
(all shows will immediately follow in order listed)

NORTH RING

Textel Show Judge: Evan Snyder
White Dorper/Dorper Show Judge: Evan Snyder

SOUTH RING

Corriedale Show Judge: Mark Johnson
Polypay Show Judge: Alex Wolf
Natural Colored Show Judge: Alex Wolf
Rambouillet Show Judge: Alex Wolf
Columbia Show Judge: Alex Wolf

Swine Barn

10am to 5pm - Weigh Stations Open for all WS/WD lambs
6pm - Hampshire Junior Show Judge: TBD

WEDNESDAY – JUNE 24th

Swine Barn

NORTH RING

8am - Shropshire Show Judge: John Morzinski
(all shows will immediately follow in order listed)
Southdown Show Judge: John Morzinski
Judge for all Wether Sires & Dams: TBD
Dorset Wether Sire & Dam Show
Dorset Advantage Wether Sire & Dam Show
Speckle-Faced Wether Sire & Dam Show
Natural Colored Wether Sire & Dam Show

SOUTH RING

8am - Hampshire Show Judge: Brian Schermerhorn
(all shows will immediately follow in order listed)
Suffolk Show Judge: Mike Caskey
Tunis Show Judge: Brian Schermerhorn
Horned & Polled Dorset Show Judge: Mike Caskey

10am to 5pm - Weigh Stations Open for all WS/WD lambs

6pm - LARRY MEAD SUPREME CHAMPION EVENT

All-American Junior Show "Big Ticket" Benefit Auction

6:30pm - Sedalia Lamb Dinner, sponsored by PURINA

THURSDAY – JUNE 25th

Sheep Barn

8am - INTERNATIONAL Katahdin Sale
(all sales will immediately follow in order listed)
NATIONAL Montadale Sale
NATIONAL Texel Sale
NATIONAL Corriedale Sale
NATIONAL Natural Colored Sale
White Dorper/Dorper Sale
Polypay Sale
Rambouillet Sale
Columbia Sale

Swine Barn

8am - Club Lamb Show (all shows will immediately follow in order listed)
Judge for Club Lambs + all Wether Sires & Dams: TBD
Hampshire Wether Sire & Dam Show
Suffolk Wether Sire & Dam Show
Crossbred Wether Sire & Dam Show

6pm - SUPREME CHAMPION WETHER SIRE & DAM SHOW
directly followed by the PURINA Forum

FRIDAY – JUNE 26th

Swine Barn

8am - NATIONAL Hampshire Sale
(all sales will immediately follow in order listed)
NATIONAL Suffolk Sale
NATIONAL Southdown Sale
Tunis Sale
Horned & Polled Dorset Sale
Shropshire Sale
NATIONAL Dorset Wether Sire & Dam Sale
NATIONAL Dorset Advantage Wether Sire & Dam Sale
Speckle-Faced Wether Sire & Dam Sale
Natural Colored Sire & Dam Sale

SATURDAY – JUNE 27th

Swine Barn

8am - Club Lamb Sale
(all sales will immediately follow in order listed)
NATIONAL Hampshire Wether Sire & Dam Sale
NATIONAL Suffolk Wether Sire & Dam Sale
Crossbred Wether Sire & Dam Sale



Friends, Family & Sheep Galore

www.midwestsale.com

Follow us: Midwest Stud Ram Sale

* BIG NEWS *

Midwest Sale is changing dates in 2021

New dates will fall on the 2nd week following Memorial Day!

Adjust your reservations... and watch for updates to the entry and ad deadlines next year.

2021

May 31 -- Memorial Day

JUNE 14-19 – Midwest Sale

"2nd week following Memorial Day"

June 30-July 4 -- All-American Jr Show

2022

May 30 -- Memorial Day

JUNE 13-18 – Midwest Sale

June 29-July 3 -- All-American Jr Show

2023

May 29 -- Memorial Day

JUNE 12-17 – Midwest Sale

June 28-July 2 -- All-American Jr Show

See You in

SEDALIA

managed by

Heartland



NAILE Sheep Scenes

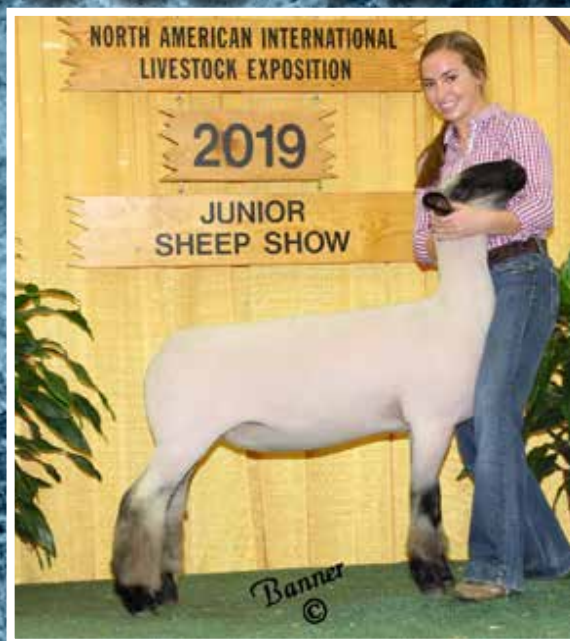


IT WAS A GOOD YEAR



WESTLAKE 810

CHAMPION EWE & RESERVE SUPREME EWE
AT OHIO STATE FAIR JR SHOW
UNDEFEATED LEAD CIRCUIT HAMPSHIRE EWE
LINSEY EDDY



WESTLAKE 920

RESERVE CHAMPION EWE AT
OHIO STATE FAIR JR & OPEN SHOW, &
KEYSTONE INTERNATIONAL
CLASS WINNER - NAILE JR SHOW
RESERVE JR CHAMPION - NAILE OPEN SHOW
LINSEY EDDY



WESTLAKE 925

RESERVE SLICK EWE AAJS
CHAMPION SLICK EWE KEYSTONE INTERNATIONAL
RESERVE NATIONAL CHAMPION FUTURITY EWE LAMB
LINSEY EDDY



WESTLAKE 915

NATIONAL CHAMPION FUTURITY EWE LAMB
EMILY STEVENS

THANK YOU LINSEY, EMILY, AND LAUREN
FOR YOUR SUPPORT IN THESE GENETICS.

CONGRATS LAUREN SWAN!
CHAMPION SR BREEDING SHOWMAN NAILE.



DAN WESTLAKE HAMPSHIRE
MARYSVILLE, OHIO
DAN WESTLAKE CLUB LAMBS
937.243.5111

ALB ELECTS NEW LEADERSHIP

The American Lamb Board elected Fiscal Year 2020 leadership at its Jan. 22 meeting, held ahead of the American Sheep Industry Association Annual Convention in Scottsdale, Ariz. The newly elected chair is Gwendolyn Kitzan of South Dakota and the vice chair is David Quam of Texas. Elected for a second term as secretary is Greg Deakin of Illinois and the treasurer is Rob Rule of Iowa.

This meeting marked the retirement of four directors, all of whom have served the maximum of six years: Jim Percival, Ohio; Dale Thorne, Michigan; Diane Peavey, Idaho; and Greg Ahart, California. Joining the board, all for their first term, are: Jeff Ebert, Kansas; Gary Visintainer, Colorado; Donald Hawk, Ohio; and Travis Anderson, Oregon.

The additional board members are: Elizabeth Dressler, Colorado; Tom Colyer, Massachusetts; Peter Camino, Wyoming; Sally Scholle, Pennsylvania; and Brad Anderson, Colorado.

Source: ALB

GARLIC BUTTER LAMB CHOPS



1. Remove loin chops from the fridge 20-30 minutes before cooking.
2. Place them on a paper towel-lined cutting board and pat them dry with paper towels. Season well with salt and pepper.
3. Heat a dry 12-inch cast iron skillet over a medium high heat. In the skillet, place the chops narrow fat side down. You probably will need to use tongs to keep them balanced and to press the chops down so that the fat renders and turns crisp and brown. Its about 5 minutes.
4. Once the fat has melted into the pan, lay the chops flat on one of their sides. Cook for another 3 minutes, until browned, then turn and cook on the other side.
5. Turn the heat to medium-low. Using a spoon, pour off more of the lamb fat and then add 2 tablespoons butter, garlic and thyme.
6. Stir well until the butter is foaming, and spoon the butter over the lamb for a minute or so. Place lamb chops in a serving dish and pour butter sauce on top.

5 lamb loin chops | Kosher salt and freshly ground black pepper | 2 tablespoons butter, melted | 3 cloves garlic, minced | 1 teaspoon fresh thyme, chopped

North American International Livestock Exposition Junior Hampshire Show Results

Louisville, KY - November 16, 2019
Junior Show Judge: Brad Angus, IL

-SLICK-SHORN DIVISION-

SENIOR RAM LAMBS

1- McCoy Show Lambs, OH Howman 1236	12/17/18	605823
2- Kylie Schakel, IN Flanders VIP 8127	10/9/18	605520

JANUARY RAM LAMBS

1- Mason, Dylan & Colton Miller, IN Slack 9141	1/18/19	604200
2- Izzy Wade, IN Wade 901	1/4/19	606197

3- Rachel Olver, PA Olver 1901	1/11/19	606071
-----------------------------------	---------	--------

4- Emily Akey, MO Mennen IN49 4240	1/18/19	605902
---------------------------------------	---------	--------

5- Allison Farmer, MD Farmer 0054	1/12/19	606201
--------------------------------------	---------	--------

6- Jack Crouch, IN Mad Jack 2017-19	1/15/19	606545
--	---------	--------

FEBRUARY RAM LAMBS

1- Adriana Wendland, MN NSLS 19202	3/14/19	606758
---------------------------------------	---------	--------

2- Sara, Jacee & Justin Johnson, WI Johnson 2001	2/23/19	605953
---	---------	--------

3- Morgan Hauger, IN Hauger 19051	2/6/19	606211
--------------------------------------	--------	--------

4- Adriana Wendland, MN NSLS 19238	3/15/19	606757
---------------------------------------	---------	--------

5- Sidney McAllister, OH AOG 7276	3/20/19	606054
--------------------------------------	---------	--------

6- Alivia Poter, IL Storms 812	2/17/19	605750
-----------------------------------	---------	--------

7- Kennedy Algire, OH Carr 1925	2/20/19	606269
------------------------------------	---------	--------

8- Alivia Poter, IL Storms 835	2/24/19	605824
-----------------------------------	---------	--------

7- Mason Johnson, OH Flanders VIP 9084	4/8/19	606568
---	--------	--------



RES. CHAMPION SLICK-SHORN RAM

Mason, Dylan & Colton Miller, IN Slack 9141	1/18/19	604200
--	---------	--------

YEARLING EWES - EARLY

1- Ty Thorson, WI Metro 1824	1/3/18	73732D
---------------------------------	--------	--------

2- Kylie Schakel, IN Flanders VIP 8862	2/15/18	74881D
---	---------	--------

3- Adriana Wendland, MN NSLS 18011 AI	1/29/18	75666D
--	---------	--------

4- Audtry Galindo, WI JFSS 8100	1/16/18	74672D
------------------------------------	---------	--------

5- Jordyn Leininger, IN Slack 8162 Z	2/8/18	75907D
---	--------	--------

6- Morgan Hauger, IN Hauger 0402	2/10/18	75099D
-------------------------------------	---------	--------

7- Alivia Porter, IL Storms 716	2/15/18	73937D
------------------------------------	---------	--------

8- Katie Anderson, IN Flanders VIP 7736 RF	10/4/17	74857D
---	---------	--------

9- Kylie Schakel, IN Flanders VIP 8749 OCD AI	1/2/18	74864D
--	--------	--------

10- Campbell, Cobrin & Clark Coyle, KY Poe 8029-18 AI	12/9/17	74471D
--	---------	--------

11- Rachel Olver, PA FCL RC 1802	1/16/18	73340D
-------------------------------------	---------	--------

12- Brodie Payne, MO Plaza Hamps 1386	2/3/18	75039D
--	--------	--------

13- Rachel Olver, PA Fleener 1849	2/2/18	74017D
--------------------------------------	--------	--------

14- Lydia Wilson, NC Stitzlein Farms 2216	1/26/18	76899D
--	---------	--------

15- Craig Schiff, OH Shroyer 2074 Yellow	2/15/18	83814D
---	---------	--------

16- Campbell, Corbin & Clark Coyle, KY Terradise 8003	12/28/17	74614D
--	----------	--------

17- Skilar Burch, TN Hoofstock D001	1/2/18	72942D
--	--------	--------

YEARLING EWES - LATE

1- Sara, Jacee & Justin Johnson, WI J Johnson 1601	2/20/18	76023D
---	---------	--------

2- Adriana Wendland, MN NSLS 18211	3/12/18	83811D
---------------------------------------	---------	--------

3- Ty Thorson, WI Metro 1849	2/17/18	73720D
---------------------------------	---------	--------

4- Kyndle Cain, TX Lanier W8017	3/1/18	77349D
------------------------------------	--------	--------

5- Campbell, Corbin & Clark, Coyle, KY Terradise 8055	3/5/18	74624D
--	--------	--------

6- Kylie Schakel, IN Flanders VIP 8825	3/13/18	74875D
---	---------	--------

7- Cynthia Connolly, NC Lazy 5 3168	2/27/18	75797D
--	---------	--------

8- Kennedy Align, OH Carr 1838	3/12/18	75919D
-----------------------------------	---------	--------

9- Izzy Wade, IN Wade 804	2/16/18	77792D
------------------------------	---------	--------

10- Ty Thorson, WI Rupnow 1325	3/18/18	73724D
-----------------------------------	---------	--------

11- Kayleigh Verhaeghe, IN Verhaeghe KCV 3067	2/18/18	75894D
--	---------	--------

12- Katie Anderson, IN Flanders VIP 8790 UP	3/1/18	74869D
--	--------	--------

13- Marnie Schwartzkopf, IN Carson 1814	2/23/18	75876D
--	---------	--------

14- McCoy Show Lambs, OH Farrow 8818	3/19/18	75443D
---	---------	--------

15- Erin Israel, FL Fischer 0257	5/25/18	82822D
-------------------------------------	---------	--------

SENIOR EWE LAMBS

1- Clark Coyle, KY Poe 19028 AI	12/5/18	80495D
------------------------------------	---------	--------

2- Kaden Parks, IN KBP 1939	12/31/18	82330D
--------------------------------	----------	--------

3- Morgan Hauger, IN Poe 19113 AI	12/16/18	80514D
--------------------------------------	----------	--------

4- Lance & Julia Gaerte, IN Shroyer 2258	12/26/18	82079D
---	----------	--------

5- Lauren Swan, MT Westlake 0937	12/26/18	81854D
-------------------------------------	----------	--------

6- Loyal Burns IV, OR Burns 1960	12/29/18	81049D
-------------------------------------	----------	--------

7- Mason Johnson, OH Rivenoak 1846	9/28/18	81082D
---------------------------------------	---------	--------

8- McCoy Show Lambs, OH McCoy 1376 AI	12/29/18	81685D
--	----------	--------

9- Tessa & Conner Ortman, IN CFL 1913	12/24/18	79177D
--	----------	--------

10- Hayden Taylor, WI Taylor 18F75	10/1/18	80515D
---------------------------------------	---------	--------

11- Emelia Roehm, OH Poe 8568-18	10/4/18	80503D
-------------------------------------	---------	--------

SENIOR CHAMPION EWE

Ty Thorson, WI Metro 1824	1/3/18	73732D
------------------------------	--------	--------

RESERVE SENIOR CHAMPION EWE Kylie Schakel, IN Flanders VIP 8862	2/15/18	74881D
--	---------	--------

EARLY JANUARY EWE LAMBS

1- Jackson Ritter, IN Wheaton 9-015	1/1/19	80702D
--	--------	--------



CHAMPION SLICK-SHORN RAM

Adriana Wendland, MN NSLS 19202	3/14/19	606758
------------------------------------	---------	--------

2- Kylie Schakel, IN Flanders VIP 9140	1/1/19	79420D
3- Linsey Eddy, OH Westlake 0925	1/6/19	81852D
4- Mason, Dylan & Colton Miller, IN Slack 9179	1/2/19	81798D
5- Garrett Friesen, IN Friesen 1924	1/6/19	82717D
6- Ty Thorson, WI Metro 1921	1/1/19	79920D
7- Kole Kruger, MI Michles 1923	1/1/19	80223D
8- Izzy Wade, IN Wade 902	1/4/19	81704D
9- Ty Thorson, WI Rupnow 1904	1/1/19	79912D
10- Abigail Wilson, NC Lazy 5 3225	1/1/19	81446D
11- Marnie Schwartzkopf, IN Slack 9213	1/3/19	82291D
12- Chloe Stonesifer, PA Fleener 1920	1/3/19	79773D
13- Keyla Rojas, KY Terradise 9008	1/5/19	81834D
14- Katie Anderson, IN Fleener 1907	1/2/19	79426D
15- Lucas Wilson, IN Brown 342	1/2/19	83645D
16- Camdyn & Walker Tingle, KY Terradise 9001	1/3/19	79908D
17- Jasmine & Bryce Rudicel, IN Rudicel 9010	1/2/19	79684D
18- Lucas Wilson, IN Brown 354	1/2/19	83646D
19- Kayleigh Verhaeghe, IN Verhaeghe KCV 3042	1/3/19	82002D
20- Kaden Steiner, IN Walker 1904 ET	1/1/19	80069D
21- John Tyler Arvin, IN Rowings P1926	1/5/19	82104D
22- Rachel Olver, PA Fleener 1907	1/2/19	79772D
23- Norman & Logan Tuholski, IN CFL 1918	1/7/19	79178D
24- Rachel Olver, PA FCL RC 1908	1/6/19	80803D
25- Eloise Roehm, OH Poe 19092 AI	1/6/19	80476D

INTERMEDIATE JANUARY EWE LAMBS

1- Madeline, Samuel & Josie Baynes, IN Mattingly 1995/1141	1/10/19	80893D
2- Julia Gaerte, IN Gaerte 1934	1/16/19	83526D
3- Kenyon Buckland, IN Flanders VIP 9166	1/8/19	79434D
4- Ty Thorson, WI Rupnow 1932	1/8/19	79942D
5- Landrey Krieger, IN JFSS 9016	1/15/19	80293D
6- Chaynee Tennant, IN CC Tennant 1803	1/16/19	82536D
7- Madeline, Samuel & Josie Baynes, IN Mattingly 1997/1140	1/10/19	80892D
8- Madalyn Crouch, IN MadJack 201718	1/15/19	82786D
9- Craig Schiff, OH Shroyer 630 Pink	1/15/19	83813D

10- McCoy Show Lambs Mc Coy 1384	1/10/19	816684D
11- Emily Stevens, OH Westlake 0915	1/15/19	81860D
12- Campbell Coyle, KY Terradise 9014	1/10/19	79895D
13- Camdyn & Walker Tingle, KY Hancock 9050	1/10/19	80864D
14- John, Tyler, Bryan & Craig Arvin, IN Cabaniss 19-823W	1/11/19	80527D
15- Kyndle Cain, TX Lanier 9118	1/13/19	83241D
16- Logan Grosz, WY Spy 2313	1/14/19	83113D
17- Corbin Coyle, KY Terradise 9016	1/16/19	79897D
18- Camdyn & Walker Tingle, KY Terradise 9013	1/10/19	79909D
19- Rance Lewellen, OK Wright 0750	1/15/19	81249D
20- Tessa & Conner Ortman, IN CFL 1919	1/8/19	79176D
21- Rachel Olver, PA FCL 1912	1/12/19	80785D
22- Hayden Taylor, WI Taylor 19-089	1/9/19	80517D
23- Allison Farmer, MD Farmer 0055	1/12/19	81709D

LATE JANUARY EWE LAMBS

1- Riley Mcghee, IN Einhouse 9046	1/24/19	83486D
2- Olivia Waggoner, PA Dee Brothers LLC 9041	1/28/19	79490D
3- Kylie Schakel, IN Flanders VIP 9158	1/17/19	79432D
4- Loyal Burns IV, OR Burns 1967	1/20/19	81051D
5- Morgan & Madison Hauger, IN Hauger 19010	1/30/19	81379D
6- Eli & Emma Mitchell, IN Mattingly 1996/1130	1/21/19	80901D
7- Chaynee Tennant, IN CC Tennant 1807	1/19/19	82537D
8- Sara, Jacee & Justin Johnson, WI Johnson 2041	1/18/19	80947D
9- Maeci Marshall, IN Slack 9240	1/20/19	83487D
10- Sidney McAllister, OH Hull 9004	1/20/19	81953D
11- Jasmine & Bryce Rudicel, IN Rudicel 9027	1/20/19	79685D
12- Katie Anderson, IN Flanders VIP 9152	1/20/19	79428D
13- Samantha Everhart, IN Unger 0019	1/29/19	80111D
14- Emma Long, GA WBL 19027	1/27/19	83498D
15- Caleb Smith, FL Crego L/S 9033	1/25/19	81562D
16- Dalton Payne, MO Plaza Hamps 1470	1/26/19	81862D
17- Renee Sivertson, IN JFSS 9022	1/25/19	81262D
18- Olivia, Kade & Isabella Jones, IN OJ 1901	1/21/19	81262D
19- Hunter Webb, TN Slentz 19060	1/26/19	79875D

20- Sarah Riemer, WI Ridgeview 1902	1/22/19	80431D
21- Alexis & Kit Gotshall, IN Mennen IN49 4759	1/25/19	80769D
22- Keyla Rojas, KY Terradise 9025	1/18/19	81835D

EARLY FEBRUARY EWE LAMBS

1- Kennedy Mitchell, IN Paxton 3	2/3/19	79514D
2- Kylie Schakel, IN Flanders VIP 9145	2/2/19	79421D
3- Jordyn Leininger, IN Slack 9382	2/5/19	81426D
4- Adriana Wendland, MN NLSL 9010	2/1/19	83070D
5- Mason, Dyland & Colton Miller, IN Slack 9109	2/3/19	81795D
6- Addison Winger, IN Rule 0644	2/2/19	83478D
7- Loyal Burns IV, OR Burns 1971	2/8/19	81052D
8- Clark Coyle, KY Terradise 9027	2/2/19	79899D
9- Skilar Burch, TN Friesen 1917	2/3/19	80267D
10- Sallie Everhart, IN Poe 19297	2/4/19	80500D
11- Chaynee Tennant, IN CC Tennant 1816	2/2/19	82538D
12- Ty Thorson, WI Metro 1959	2/1/19	79951D
13- Ty Thorson, WI Rupnow 1966	2/2/19	79930D
14- Thomas Schroedor, FL Harrel 9340	2/20/19	81712D
15- Garrett Kennedy, IN Friesen 1916	2/3/19	83530D
16- Olive Budrea, IN Spitznagle 9533	2/3/19	80079D
17- Aaron Jennings, IN Hired Hand 9035	2/9/19	81314D
18- Risher Webb, TN Slentz 19066	2/5/19	79876D
19- Rance Lewellen, OK Wright 0755	2/3/19	83073D
20- Madison McCartney, OK Charmasson 9007	2/1/19	81818D
21- Brodie Payne, MO Plaza Hamps 1474	2/7/19	81861D
22- Harlee & Brady Dunaway, IN Hauger 19072	2/1/19	81822D
23- Cooper Burkhalter, OK Wright 0757	2/6/19	83012D

INTERMEDIATE FEBRUARY EWE LAMBS

1- Linsey Eddy, OH Westlake 0920	2/11/19	81855D
2- Sara, Jacee & Justin Johnson, WI Johnson 1962	2/8/19	80952D
3- Morgan & Madison Hauger, IN Hauger 19018	2/17/19	81378D
4- Jordyn Leininger, IN Slack 9288	2/16/19	81422D
5- Mekenna & Lisa Franklin, IN Franklin SS 0021	2/11/19	83557D
6- Lauren Swan, MT Westlake 0944	2/13/19	83697D
7- Dylan Brader, IA		





CHAMPION SLICK-SHORN EWE

Jackson Ritter, IN

Wheaton 9015 1/1/19 80702D



CHAMPION FITTED RAM

Dalton Payne, MO

Plaza Hamps 1509 3/15/19 606126



RES. CHAMPION SLICK-SHORN EWE

Ty Thorson, WI

Metro 1824 1/3/18 73732D



RES. CHAMPION FITTED RAM

Sam Bobendrier, MN

Bobendrier Boys 19-60 3/9/19 606525

-FITTED DIVISION-

SENIOR RAM LAMBS

1- William Taylor, KY
Herrig 1236 10/12/18 605666

JANUARY RAM LAMBS

1- Ashton Daniels, MO
Plaza Hamps 1467 AI 1/06/19 606125

FEBRUARY RAM LAMBS

1- Dalton Payne, MO
Plaza Hamps 1509 3/15/19 606126

2- Sam Bobendrier, MN
Bobendrier Boys 19-60 3/9/19 606525

3- Jenna Sullivan, CT
Strawberry Fields 1901 2/3/19 606630

4- Sam Bobendrier, MN
Bobendrier Boys 19-44 2/2/19 606464

5- Sam Bobendrier, MN
Bobendrier Boys 19-57 3/1/19 606526

6- Danielle Houghtaling, SD
Houghtaling 19-905 2/7/19 605578

7- Kenzie Meyer, IL
Meyer 1933 2/15/19 606409

8- Tinleigh Spoonster, MO
Spoonster 19-23 3/10/19 605737

EARLY YEARLING EWES

1- Jenna Sullivan, CT
Sullivan 1807 2/1/18 74392D

2- Ashton Daniels, MO
Plaza Hamps 1434 3/13/18 75046D

3- Izzy Wade, IN
SCF 801 2/15/18 75745D

4- Jenna Sullivan, CT
Larson L & L 18-808 1/26/18 77113D

5- Beau Mumm, IL
Mumm 1802 1/12/18 73614D

6- Tinleigh Spoonster, MO
Car Land Farms 18-37 1/4/18 74587D

7- Sam Bobendrier, MN
Bobendrier Boys 18-40 1/22/18 68659D

8- William Taylor, KY
Taylor Stock 863 2/11/18 74368D

9- Dylan R. D. Klug, IA
Klug HH 18-148T 2/2/18 74134D

10- Jenna Lindow, WI
Lindow Farms WI2273-0594 2/24/18 75987D

11- Bristol Brown, TN
BB 0103 2/20/18 85141D

SENIOR EWE LAMBS

1- Jenna Sullivan, CT
Sullivan 1901 10/10/18 79217D

2- Kendall Smith, MO
Spoonster 18-50 9/2/18 80244D

3- Tinleigh Spoonster, MO
Spoonster 18-52 9/5/18 80246D

4- William Taylor, KY
Peterson 9722 10/17/18 80114D

5- Danielle Houghtaling, SD
Houghtaling 18-867 9/18/18 79560D

6- Grace Powell, TN
Bobendrier 18-178 9/7/18 79980D

7- Lainey Mendenhall, IN
Pearson 1822 10/29/18 80381D

8- Kenzie Meyer, IL
Sanford M903 9/10/18 80025D

SENIOR CHAMPION EWE

Jenna Sullivan, CT
Sullivan 1807 2/1/18 74392D

RESERVE SENIOR CHAMPION EWE

Ashton Daniels, MO
Plaza Hamps 1434 3/13/18 75046D

JANUARY EWE LAMBS

1- Jenna Sullivan, CT
Sullivan 1911 1/12/19 79221D

2- Ashton Daniels, MO
Borcher 9008 1/20/19 80241D

3- Jenna Sullivan, CT
Sullivan 1907 1/11/19 79216D

4- Sam Bobendrier, MN
Bobendrier Boys 19-22 1/10/19 81026D

5- Sam Bobendrier, MN
Bobendrier Boys 19-18 1/5/19 81025D

6- William Taylor, KY
Taylor Stock 916 1/5/19 80611D

7- Lainey, Ansley & Hadley Mendenhall, IN
Hickman 1435 1/3/19 79362D

8- Danielle Houghtaling, SD
Houghtaling 18-879 1/21/18 75011D

FEBRUARY EWE LAMBS

1- Jenna Sullivan, CT
Sullivan 1917 2/4/19 79222D

2- Beau Mumm, IL
Mumm 1904 2/3/19 80341D

3- Danielle Houghtaling, SD
Houghtaling 19-923 2/19/19 81814D

4- Ashton Daniels, MO
Plaza Hamps 1483 2/12/19 81554D

5- Lainey, Ansley & Hadley Mendenhall, IN
Pearson 1826 2/12/19 80393D

6- William Taylor, KY
Taylor Stock 947 2/16/19 80614D

7- Grace Powell, TN
Houghtaling 19-906 2/7/19 81812D

MARCH EWE LAMBS

1- Tinleigh Spoonster, MO
Spoonster 19-12 3/6/19 80251D

2- Jenna Sullivan, CT
Strawberry Fields 1914 3/1/19 83121D

3- Jenna Sullivan, CT
Sullivan 1933 3/2/19 82299D

4- Tinleigh Spoonster, MO
Maya 19-45 3/17/19 83824D

5- Connley Hoagland, MT
Spoonster 19-11 3/4/19 80250D

6- Kenzie Meyer, IL
Meyer 1954 3/5/19 82373D

7- Dylan R. D. Klug, IA
Klug HH 19-103T 3/4/19 79820D

8- Danielle Houghtaling, SD
Houghtaling 19-926 3/2/19 79562D

9- Bristol Brown, TN
Brown TN 012733 0209 3/15/19 81337D

JUNIOR CHAMPION EWE

Jenna Sullivan, CT
Sullivan 1917 2/4/19 79222D

RESERVE JUNIOR CHAMPION EWE

Tinleigh Spoonster, MO
Spoonster 19-12 3/6/19 80251D



CHAMPION FITTED EWE

Jenna Sullivan, CT
Sullivan 1917 2/4/19 79222D



RES. CHAMPION FITTED EWE

Jenna Sullivan, CT
Sullivan 1807 2/1/18 74392D



GRAND CHAMPION EWE

Jackson Ritter, IN
Wheaton 9-015 QR ET 1/1/19 80702D



RES. GRAND CHAMPION EWE

Jenna Sullivan, CT
Sullivan 1917 2/4/19 79222D



GRAND CHAMPION RAM

Adriana Wendland, MN
NSLS 19202 ET 3/14/19 606758



RES. GRAND CHAMPION RAM

Dalton Payne, MO
Plaza Hamp 1509 3/15/19 606126

-MARKET LAMB DIVISION- HAMPSHIRE

CLASS 5

- 1- Madison Fea - Lipan, TX
- 2- Kobi Scroggins - Moore, OK
- 3- Bryce Hamlin - Big Spring, TX
- 4- Tanner Schaeffer - Beach City, TX
- 5- Kaden Nelson - New Richland, MN
- 6- Sidney Gossard - Ada, OH
- 7- Blake Burns - Galt, CA
- 8- Hailey Albrecht - Oroville, GA
- 9- Leighton Lawhon - Bishop, TX
- 10- Rhyker Mauck - Gaston, IN

CLASS 6

- 1- Brayden Bowers - Belmont, WI
- 2- Addison Harlow - Prairie Grove, AR
- 3- Mackenzie Castro - Napoleonville, LA
- 4- Kalen Barwick - Deep Run, NC
- 5- William Hendrickson - Bidwell, OH
- 6- Alayna McCarthy - Hinton, IA
- 7- Tara Glasscock - Early, TX
- 8- Tanner Schaeffer - Beach City, TX
- 9- Tyler Getzlaff - Ocala, FL
- 10- Mac Heuer - Greensboro, GA

CLASS 7

- 1- Mason Smith - Elk City, OK
- 2- Sam Schmillen - Marcus, IA
- 3- Riley Scott - Lawton, OK

- 4- Brantlee Cox - Glencoe, OK
- 5- Audrey Galindo, Delavan, WI
- 6- Trey Harbour - Gatesville, TX
- 7- Addilyn Bryant - Ashland, OH
- 8- Aubrie Uppenkamp - Botkins, OH
- 9- Ely Smith - Kingman, IN
- 10- Jerson Kopka - Bird Island, MN

CLASS 8

- 1- Halle Hindman - Albia, IA
- 2- Sam Schmillen - Marcus, IA
- 3- Claudia Vanzant - Stillwater, OK
- 4- Grace Arthur - Ellendale, MN
- 5- Ashlyn O'Brien - Perrysburg, OH
- 6- Larissa Sweigard - Halifax, PA
- 7- Lilian Unger - Chebanse, IL
- 8- Treven Jones - Healy, KS
- 9- Garrett Friesen - Carthage, IN
- 10- Kaylee Kasperski - Allenton, MI

CLASS 9

- 1- Logan Jackson - Olden, TX
- 2- Hudson Franklin - Shallowater, TX
- 3- Evelyn Koehler - Lancaster, OH
- 4- Alexandra Raute - Carmel, IN
- 5- Morgan Evans - Richwood, OH
- 6- Edward Hanson - Clifton, IL
- 7- Alayna McCarthy - Hinton, IA
- 8- Owen Vankirk - Lyons, NE
- 9- Matt Younker - Batavia, OH
- 10- Ty Jones - Schottsville, KY

CLASS 10

- 1- Cache Wrye - Estancia, NM
- 2- Maddison Woods - Gustine, CA
- 3- Madison Rule - Hawarden, IA
- 4- Garrett Greiner - Keota, IA
- 5- Cole Ellerbrock - Atkinson, IL
- 6- Nash Droppert - Grimes, IA
- 7- Karlee Maag - Ottawa, OH
- 8- Jillian Keller - Piqua, KS
- 9- Hannah Blankenship - Tazewell, VA
- 10- Allison Dillon - Jonesboro, IN

CLASS 11

- 1- Kailen Urban - Gotebo, OK
- 2- Alex Raute - Carmel, IN
- 3- Cole Cooper - Elmwood, NE
- 4- Edward Hanson - Clifton, IL
- 5- Evan McClain - Albany, IN
- 6- Trace Titus - Alexis, IL
- 7- Khloe Nelson - New Richland, MN
- 8- Claire Ohlrichs - Merrill, IA
- 9- Reagan Doland - Cheyenne, WY
- 10- Kendra Kennedy - Neosho, MO

CLASS 12

- 1- Bailee Amstutz - Richwood, OH
- 2- Brantlee Cox - Glencoe, OK
- 3- Ethan Bontrager - Millersburg, IN
- 4- Zach Zuber - Marengo, IA
- 5- Trenna Cherney - Wonewoc, WI

- 6- Sarah Young - Leesburg, OH
- 7- Taylor Pfaff - Edinburg, PA
- 8- Haley Van Nurden - Sunburg, MN
- 9- Bryce Clayton - Winchester, IL
- 10- Kaden Nelson - New Richland, MN

CLASS 13

- 1- Allison Dillion - Jonesboro, IN
- 2- Adara Bell - Avilla, IN
- 3- Oliver Dies - Ames, IA
- 4- Rose Davies - Filer, ID
- 5- Kenzie Brown - Grapeland, TX
- 6- Kendall Sattler - Defiance, OH
- 7- Abigail Critchelov - Chandlerville, IL
- 8- Justin Rupnow - Nemaha, IA
- 9- Weston Stevens - Chillicothe, OH
- 10- Allison Van Nurden - Sunburg, MN



**4TH OVERALL MARKET LAMB
CHAMPION HAMPSHIRE**
Halle Hindman - Albia, IA



**5TH OVERALL MARKET LAMB
RES CHAMPION HAMPSHIRE**
Logan Jackson - Olden, TX

HOWELL CLUB LAMBS



Sires For 2020 Lambs:
**PARTY UP NORTH
ROAD RAGE
CREGO 7005 (ROOMBA)**

Howell Club Lambs

8582 Township Line RD | Celina, OH 45822

PH. 419-953-0238 | Larryhowell@Bright.net

www.Howellclublambs.com



ROASTED LEG OF LAMB

1 (5-6 pound) trimmed bone-in leg of lamb | 4 cloves garlic, minced | 1 tablespoon olive oil | 1 tablespoon chopped fresh rosemary | 1 tablespoon chopped fresh thyme leaves | 1 tablespoon Dijon mustard | 1 tablespoon kosher salt | 2 teaspoons ground black pepper

1. PREHEAT OVEN TO 350 DEGREES. LINE A ROASTING PAN WITH ALUMINUM FOIL.
2. PAT LAMB DRY WITH PAPER TOWELS. USING A SHARP KNIFE, SCORE THE TOP SIDE OF THE LAMB BY MAKING SHALLOW CUTS ALL OVER.
3. IN A SMALL BOWL, COMBINE GARLIC, OLIVE OIL, ROSEMARY, THYME, DIJON, SALT AND PEPPER
4. PLACE LAMB, FAT SIDE UP, ON A RACK IN THE PREPARED ROASTING PAN. SPREAD GARLIC MIXTURE EVENLY OVER THE LAMB, RUBBING IN THOROUGHLY INTO THE SCORED CUTS.
5. PLACE INTO OVEN AND ROAST UNTIL IT REACHES AN INTERNAL TEMPERATURE OF 135 DEGREES F FOR MEDIUM, ABOUT 1 HOUR 30 MINUTES TO 1 HOUR 45 MINUTES, OR UNTIL DESIRED DONENESS. LET REST 15 MINUTES BEFORE SLICING.

Held's Hampshires

AURORA, SD 57002
JEFF | MARY | AUSTIN | AARON
CELL (JEFF): 605.690.7033

HELDHAMPSHIRE.COM | HELDHAMPS@GMAIL.COM



Held19-2138 NNPRR

Triplet born and reared (1-31-19)
2019 Res Champion Ram SD State Fair

Dam was our Champion Ewe at IA in 2017, also 1st Class 2 at Louisville. Thank you to Kathryn Person, IL for selecting this big boned, straight made stud with terrific breed type for her flock following the National Show in November. Exposed him to an elite set of ewes for early Feb 2020 lambs! Check with us this spring for information on his offspring!



NIEMEIER 818

Our most recent stud acquisition!
He sired an outstanding set of October born fall lambs. Have a dozen fall stud prospects, also should have a good number in the spring crop. Check with us by late March for progress on 818 offspring.



CONGRATULATIONS TO BAA BAA ACRES

Premier Exhibitor 2019 National Hampshire Show. All animals in this winning flock carried Held's Hampshire pedigrees!



2019 NATIONAL HAMPSHIRE SALE

Res. Champion Ewe (Jan) Purchased by Suehs Hillside Farm Manawa, WI

Thanks to the breeders that supported our flock in 2019! Looking forward to 2020!

At the National Hampshire Sale (Sedalia) and the National Hampshire Show in Louisville our genetics were well represented in the winners circle. These nationally recognized flocks exhibited top quality animals with Held's Hampshire pedigree impact:

- Baa Baa Acres - WI
- Pullin Hampshires - IA
- Pine Lawn Hampshires - MN
- Rabbit Creek Hampshires - NV
- Plaza Hampshires - MO
- Spoonster Hampshires - MO
- Mumm Hampshires - IL
- Ethan Kennedy - NY

Our sale consignment plans for 2020!

Heart of Champion - April 23
AHSA On-line Sales - April 28
Midwest Stud Ram Sale - June 22-27
Private Sales at the Farm - Inquiries anytime!

AMERICAN HAMPSHIRE SHEEP ASSOCIATION

Photo Contest

The AHSA is seeking outstanding high-resolution photos that showcase Hampshire sheep in their natural settings or youth with their Hampshires. The photos may be used as Heartbeat covers or for promotional displays and advertisements.

The winners will be selected by an outside third party. These photos must be taken with a camera that allows for the reproduction of high-quality prints.

Categories:

Sheep Scenes (sheep in their natural environment)
Sheep with People (not show ring pictures)

The AHSA will provide the following cash awards to the top five photos selected in each category. All previously submitted photos may be resubmitted for this contest.

First \$100 Second \$75 Third \$50 Fourth \$40 Fifth \$30

Winners will be featured in the spring issues of the Hampshire Heartbeat.

Image Requirements:

- High-resolution file vertical format works best for cover photos
- Include: Your name, phone number, email address & photo description
- **Photo Deadline: April 15, 2020**

Send your photos to: asregistry@gmail.com

If you have questions do not hesitate to call Jeff (785) 456-8500

YOUTH

Happy New Year! Have you found yourself thinking that life isn't fair? Well, you are certainly not alone. If each of us, young and old, would be honest, we have all thought this at some point in our lives. These thoughts stem from expectations that didn't turn out the way we wanted. Part of the problem could be in the expectation itself.

Let me give you an example right from the start. Let's say that you expected to win your class at the first show of the year. You had this expectation, because you had purchased the best lamb from a prominent breeder in your area and it was the high seller. When you arrived at the jackpot and saw the competition, doubt started to creep in and then the judge put you next to the bottom of the class. You left the show thinking to yourself, "Why me? Why can't I get a break? I know I had the best lamb."

Does this sound familiar or relatable? Too often, we like to place the blame on others such as our parents, instructor, 4-H leader, the judge, etc. We place blame and make excuses. "They knew the judge. They always win. Oh why me? Life isn't fair!" How do you break this cycle of unrealistic expectations? It is my hope that this article will help put you in the right frame of mind, so that you may enjoy the level of success that you desire with your Hampshire sheep project.

Step 1: Let's get your attitude on track. My attitude you say, "It's fine as long as everyone else could just see what I want." Therein lies the issue. This is your project. It is up to you and no one else. You will always have a choice in your attitude that you have towards others, in and during the struggles of feeding, breaking, training, and showing your sheep. Yes, this is and should be a family project, but the responsibility of your family is that of support and teaching you, not doing the work for you. Learn to find joy in feeding and working with your lamb. You can also find joy in learning the correct nutrition to accomplish proper weight and muscle development. Set weekly goals of the amount of weight your lamb should grow to hit a desired date and finished weight. Set up a weekly chart for weight gain and weigh your lamb at the same time each week. Empty or full is not as important as being consistent. You will quickly learn by doing this that it becomes easy to predict what the lamb will weigh at a given show date. This is where a coach can help. Coaches can be an FFA advisor, 4-H leader, older 4-H/FFA members, a trusted breeder, or a fitter. Coaches can help you determine the proper show weight at the appointed date of the show for your lamb. As your lamb grows on track, you can take joy in knowing the lamb will look good on show day at the weight you have targeted.

Step 2: We all know that getting a lamb finished on time is only part of the equation. Your lamb has to show and look his best to get the judge's attention. This takes daily practice under well advised supervision. When you are setting your weekly goals for weight gain for your lamb, set one for you and how much practice you will dedicate to your lamb. You must be able to walk your lamb by hand around the ring. It will take many hours of you walking at home practicing until your animal can walk smoothly around by hand anywhere you want to go without trying to get away. You want the result to be a fluid free moving animal that demands attention. I find that an animal looks his best while pushing slightly into the showman's hand while walking. You do not want an animal that fights and pulls back from lack of work. The more you have worked with your lamb, the more relaxed you both will be which will make your lamb stand out. Your confidence will be evident as you parade about the ring.

CONNECTION

Step 3: For some, it seems they don't understand the show brace. Bracing is a time where the lamb pushes himself forward into the showman's legs. The showman, in return pushes toward the lamb to increase muscle expression as well as make the body rigid and firm while being handled and shown. It is a trained response by the showman signaling the lamb to push. Practice, practice, practice. Use a mirror to watch yourself or have someone film you to help you get the desired pose. It can take hours of practice to train the lamb and you to the desired look you want the judge to see.

Step 4: How to prepare for show day. Each step is important, but I have found that most people struggle with this. Show day prep starts long before the show itself. Most market lambs are shown slick sheared. It is with that in mind I offer the next suggestions. Number one is hydration is key. To keep a lamb properly hydrated electrolytes and a show drench is usually needed. There are several products available from show suppliers as well as home recipes. For ideas on which is best, check with your feed nutritionist or coach on what, when, and how. Depending on your lamb and the environment, hydration may need to begin days before you shear.

The washing and shearing process is stressful on the lamb's skin and precaution to keep it from wrinkling and drying out must be taken. Once they are sheared put a recommended lotion on them to protect the skin and keep them blanketed at all times. The tube socks work well but tear easily and in cool weather are not enough. Two blankets may be needed. My preference is the cotton fabric for all tubes and blankets. The objective is to present a well hydrated, firm feeling touch when the judge handles the lamb. If your sheep is too warm while showing he will feel soft. This is a huge negative to a judge and very important to get right.

If you will take the time to feed, train, and prepare properly on show day. You will get the results you have earned. The more you practice and shows you can attend, will help you gain the confidence needed. It is then and only then that you can expect to receive the higher placings. Good luck this show season!

Have a blessed day,
Ed Hewlett



This picture represents a well braced and correct feet and head placement of a market lamb.

Presenting Three 2019 NAILE Class Winners... and the National Fitted Grand Champion Ram!



Peterson 9842
**1st February
Ram Lamb**

Sired by Peterson 9335

Peterson 9726
**1st Senior
Ram Lamb**

Sired by BM WM 7-96

"DAKOTA PRIDE"
Peterson 9485
**1st Yearling Ram &
NATIONAL
FITTED GRAND
CHAMPION RAM**

Sired by "Pride"

**Thanks to the Spilde Fitting Crew & Cassidy Lobdell for a Great Job!
A Special Thanks to All Our Buyers, Bidders Throughout the Year!**

OUR HAMPS HAD A GREAT YEAR!



3rd January RamLamb
Flush Lamb from "Home Boy"



**5th
Yearling
Ewe**
"Miss
Cass"
Sired by
Peterson
7175



3rd February Ewe Lamb
Flush Lamb from "Home Boy"



Reserve 2019 Senior Champion Ram
Fall Ram Lamb - Big Ohio Sale

Sired by BM WM 7-96

*Excited to see another set of Flush lambs
out of "Home Boy" and "Miss Cass".*

*We have October-born lambs
on the ground from "Dakota Pride".*

**Visitors always welcome, barn open
May 1, 2020.**

**DOUG & LINDI
PETERSON**

803-23rd Street N.E.

Lemmon, SD 57638

701/376-3115

peterson@sdplains.com

**P
PETERSON SHEEP CO.**

AMERICAN HAMPSHIRE SHEEP ASSOCIATION APPLICATION FOR SUMMER INTERNSHIP

The below application is for individuals who are interested in applying to work as a summer intern for the American Hampshire Sheep Association. The approximate start date would be May 15th and approximate ending date would be August 1st. This is a paid internship and some travel might be required. Ideally, the successful applicant will work for 10-12 weeks and help with seasonal registry work and other duties of the AHSA office. Applications will be accepted until March 25, 2020. Phone interviews will be conducted around April 1st and the job offer will be made soon thereafter.

The job location is at the AHSA office in Wamego, Kansas.

Application and current resume can be emailed to asregistry@gmail.com or mailed to AHSA, PO Box 231, Wamego, KS 66547. If you have questions call Jeff Ebert at 785-456-8500.

Name: _____ Phone: _____
Address: _____
Email Address: _____ Year in School: _____

- Give a brief background on your agriculture experiences, including with sheep and then specifically with Hampshires.
- Why do you want to work as a summer intern for the American Hampshire Sheep Association?
- What experiences do you hope to gain by serving the AHSA as a summer intern?
- Do you have any extra talents that would assist the AHSA office (For example, livestock photography or design and layout of brochures?)
- Would you be available to travel to shows and sales if needed by the AHSA secretary?
- Do you have any potential summer conflicts during June or July, 2020?
- What could be your earliest start date and latest end date if you were offered this position?

Please use additional pages as necessary.



New Members

COLORADO

**ROCKY DRAW FARM -
TYLER & APRIL WILLBANKS**

GEORGIA

EMMA BO PEEP FARM - EMMA LONG

ILLINOIS

**SARAH EHRNTHALLER
TYLER HOMANN
JARED WHITCOMB**

INDIANA

**BELDEN BOYS - WILL, LUKE, &
CLAY BELDEN**

KEVIN BROWN & FAMILY

**MAKENNA & HAISLEY FRANKLIN
PAYTON & PIPER HUMPHREY**

IOWA

ZACHARY BOBB WEAVER

MINNESOTA

**KINSLEY SHOW STOCK -
ERIC KINSLEY**

QUINT & CATHERINE PRECHT

MISSOURI

TRENTON & PAYTON HARKER

NORTH DAKOTA

ROCKY & KELLY BROWN

OHIO

**BRITTANEY ALLEN
RODNEY MCDANIEL
KAITLYN STILLION**

OKLAHOMA

CIMARRON CLUB LAMBS

JEFF DAMPHOUSE

MATT FORD

ORGEON

4M LIVESTOCK - HAILEY & MADILYN

MCKENZIE

PENNSYLVANIA

MAP FARM - MIKE FIRESTINE

TENNESSEE

KALEB & HEATHER HESSON

TEXAS

MIA & JAMIE GUTIERREZ

KYLE RAMSEY

PRESTON & PARKER WEBB

NATIONAL HAMPSHIRE SALE

The National Hampshire Sale will again be held in conjunction with the Midwest Stud Ram Sale. The sale will again be managed by the Heartland Group. The Hampshire show will be Wednesday, June 24th at 8:00am with Brian Schermerhorn as the judge. The Hampshire Wether Sire & Dam show will be Thursday, June 25th at 8:00am and the judge has not been confirmed yet.

The National Hampshire Sale will be the first sale on Friday, June 26th at 8:00am and the National Hampshire Wether Sire & Dam sale will be Saturday, June 27th following the club lambs at 8:00am.

For further details on the sale please go to www.midwestsale.com.

CONSISTENT GENETICS CONSISTENT RESULTS



2019 FLOCK NATIONAL HAMPSHIRE SHOW

3RD PLACE CLASS 1 YRL EWE | 3RD PLACE CLASS 2 YRL EWE | 1ST PAIR YRL EWES
2ND MARCH RAM LAMB | MEMBER 3RD PAIR RAM LAMBS
2ND MARCH EWE LAMB | 8TH MARCH EWE LAMB | 2ND PAIR EWE LAMBS



CONGRATULATIONS TO RIKOW HAMPS & TOM UNDERWOOD

GRAND CHAMPION EWE
2019 NATIONAL HAMPSHIRE SHOW
DAM PURCHASED FROM US IN NORTH STAR SALE



CONGRATULATIONS MIKE BARNES

4TH JAN EWE LAMB
2019 NATIONAL HAMPSHIRE SHOW
DAM PURCHASED FROM US IN 2018 ONLINE SALE



CONGRATULATIONS ALF HAMPSHIRE

GRAND CHAMPION EWE
2019 NATIONAL HAMPSHIRE SALE
DAM PURCHASED FROM US IN 2017 ONLINE SALE

8TH ANNUAL SHARING THE GENETICS ONLINE SALE APRIL 30, 2020

MIKE, CARRIE, JASON & KYLE CASKEY
1222 171ST ST. HOLLAND, MN 56139

PH: 507.347.3229 | CELL: 507.215.0266

MGCASKEY@WOODSTOCKTEL.NET | WWW.CASKEYPINELAWNFARMS.COM



ASI Convention Theme Permeates Week in Scottsdale

Reverence for the Past, Innovation for the Future was more than just a theme for the 2020 American Sheep Industry Association Annual Convention. Sheep industry leaders from across the United States came together Jan. 22-25 at the Scottsdale (Ariz.) Plaza Resort to put those words into action.

Front and center was the ASI Board of Directors' financial support of a commercial wool testing lab at Texas A&M AgriLife Research and Extension Center in San Angelo, Texas. The American wool industry has been researching the need to continue wool testing in a facility in the United States for the last couple of years. In 2019, wool industry leaders met first in San Angelo to discuss options, and later traveled to New Zealand to tour that country's testing facility.

While the New Zealand facility will be open to American wool producers in 2020, the goal is to have the lab in San Angelo test the 2021 wool clip. Texas A&M leadership supports the idea and provided a six-figure financial package, as well as existing building and some personnel related to the research that is conducted there today. The National Sheep Industry Improvement Center and ASI's for-profit Sheep Venture Company are partnering on a commitment of \$150,000 in grant money toward laboratory setup and training costs, while ASI will contribute \$50,000 of wool funds.

"I think it's amazing that such a small organization was able to come together and commit \$200,000 to ensure we have access to wool testing in the United States," said ASI Executive Director Peter Orwick. "Most of the American wool clip could not compete in the domestic or international markets without objective measurement, and the ASI leadership is pleased to support the wool experts at the university to provide this service."

While details of the new lab put a nice bow on the final day of the convention, attendees were indoctrinated with the week's theme from the outset. Thursday's opening session provided a panel discussion with four industry innovators who built on the foundations established by their parents and grandparents and have worked to expand and grow those operations in ways their predecessors might never have imagined.

Producers Reed Anderson of Oregon, David Fisher of Texas, John Helle of Montana and Ryan Mahoney of California formed the panel. Each gave a presentation on where their operations began and worked from there to show how they've innovated from what were most often humble beginnings. Helle and his family earned the 2019 ASI Industry Innovation Award for developing the Duckworth clothing line that promotes a "sheep to shelf" dynamic that has proven popular with consumers. Anderson won the innovation award this year for building his own lamb processing facility to eliminate a bottleneck in his supply chain.

While Anderson and Helle looked to create new businesses to sustain their sheep industry involvement, Fisher and Mahoney are developing new programs and implementing new technology within their flocks to increase productivity and secure the bottom line. In many cases, that meant adding the use of technology, but Mahoney offers one key piece of advice.

"Get what works for you," he said.

ASI is following that advice, as well, in two key areas with the development of the American Wool Assurance Program and the Secure Sheep and Wool Supply Plan. Wool standard programs have been popping up across the globe in recent years – mostly at the request of manufacturers and retailers – to show that wool is harvested in a responsible manner. With that in mind, ASI is working with Colorado State University to develop a wool standard that works for both producers and the companies who purchase, manufacture and sell wool. While the program is still in the developmental stage, Dr. Jason Ahola from CSU was on hand to discuss preliminary findings with wool producers in several meetings during the week.

The Secure Sheep and Wool Supply Plan being developed by ASI in conjunction with Iowa State University is aimed at dealing with a possible disease outbreak within the sheep industry. Dr. Danelle Bickett-Weddle – who was on hand for the Production, Education and Research Council meeting last week – is working on disaster plans, as well as educational handouts, a website and more that will allow the sheep industry to come together to stop the spread of an infectious disease outbreak.

U.S. Department of Agriculture Under Secretary for Food Safety Dr. Mindy Brashears made her first speech of 2020 at the convention when she spoke to the ASI Board of Directors Informational Session on Friday afternoon and addressed two issues important to the sheep industry: fake protein and spring lamb. Brashears said USDA is working to address labeling of cell- and plant-based proteins, and that she expects a decision on the spring lamb petition in the next month or two.

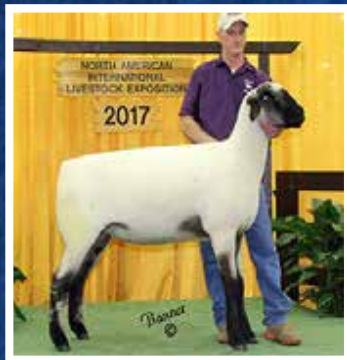
In other association business, each of ASI's eight regions met for individual caucuses, and three of those regions were tasked with electing new representatives to the ASI Executive Board. Region I elected Laurie Hubbard of Pennsylvania, Region III elected Anne Crider of Illinois and Region V elected Tammy Fisher of Texas. They were each elected to serve two-year terms on the board, and will be eligible for reelection to a second, two-year term.

Retiring Executive Board members Don Kniffen of New Jersey, John Dvorak of Minnesota and Bob Buchholz of Texas were all honored for their years of service to the industry during the Saturday board meeting.

The Make It With Wool National Finals and Awards Banquet closed out the week on Saturday night. The Senior Winner and MIWW Ambassador for 2020 was Charlotte Waldron of Ohio. The Junior Winner and MIWW Ambassador was Madeline Douglas of Indiana. Meighan Stevens of Ohio was the Adult Winner, while Yiling Lai of Drexel University was the 2020 Fashion/Apparel Design Winner.

KJELDGAARD/WILLWERTH HAMPSHIRE FEMALE ONLINE SALE

2017 NAT. RES. CHAMPION FITTED EWE



MAID OF HONOR

Same genetics that have produced these show stoppers sell.

AI
402.870.0397

APRIL 19TH
MANAGED BY

INTEGRITY LIVESTOCK SALE

WE CAN LINE UP DELIVERY
TO OHIO OR MIDWEST SALE

1ST PLACE MARCH EWE LAMB 2019 NAT. SHOW



She will be in the sale.

2018 NAT. CHAMPION FITTED EWE



ANGIE'S PRIDE

YOUR PLACE FOR
BIG GENETICS
FOR
BIG RESULTS

RON
515.570.2173

AHSA FUTURITY BREEDER NOMINATIONS

The American Hampshire Sheep Association is encouraging breeders to support the Hampshire Futurity with the opportunity to nominate their entire 2019 fall and 2020 spring lamb crops. There is a one-time fee of \$200 to nominate all ewe lambs that you register that were born from September 1, 2019 to April 30, 2020. This includes all ewe lambs sold privately, through online sales or through public auctions. This does not replace nominating individual ewe lambs sold privately or through auctions. There is a form on the Hampshire website to nominate your entire lamb crop or you can call Jeff at 785-456-8500 for more information.

JUNIOR FEATURE: JORDYN LEININGER



GIVE A BRIEF BACKGROUND ON YOU.

My name is Jordyn Leininger and I am a freshman at Whitko Jr.-Sr. High School in South Whitley, Indiana. I am involved in National Junior Honors Society, Peacekeepers, Student Council, and FFA. Outside of school, 4H and theater keep me busy! I love performing on the Wagon Wheel stage and have been in 10 junior productions and one professional production.

NUMBER OF HAMPSHIRE IN YOUR FLOCK?

Five.

FAVORITE SHOW YOU HAVE ATTENDED AND WHY?

NAILE is one of the shows we look forward to each year. There is something special about showing on those green shavings! Plus I get to spend time with amazing people (and I get a few days off school)!

WHAT DO YOU LIKE ABOUT HAMPSHIRE?

For the last two years my showmanship ewe was a hamp named Goldie. She has the sweetest disposition and we really connected. Hamps are not only great in the ring, but they are also good mothers.

FONDEST SHEEP MEMORY?

Winning Supreme Ewe in 2016 at the Indiana State Fair with Haley the Hampshire. Haley was a big girl with attitude, and I was an 11-year-old girl with attitude. That made every trip into the ring with Haley an adventure!

FUTURE PLANS AND GOALS?

Every time I go into the ring, my goal is to do my best and learn from the experience. Academically, I am aiming to graduate at the top of my class, go to college, and become a large animal veterinarian.

ADVICE YOU WOULD LIKE TO SHARE WITH JUNIOR HAMPSHIRE MEMBERS?

Never stop trying. Even if a year does not go as planned, even if you do not win that purple banner, even if your sheep do not turn out as hoped, don't quit. You never know when things may line up in your favor!

WHAT IS YOUR FAVORITE FOOD?

Dippin' Dots

FAVORITE ACTIVITY AWAY FROM SHEEP?

Theater and pageants

WHAT IS YOUR ULTIMATE VACATION?

Going to Harry Potter World or spending a week at Disney.

WHAT IS A FUN FACT ABOUT YOURSELF?

I participate in the Miss America organization. I currently hold my third title, Miss South Bend's Outstanding Teen, and will compete in June for Miss Indiana's Outstanding Teen.

MARSHALL *Sheep Company*



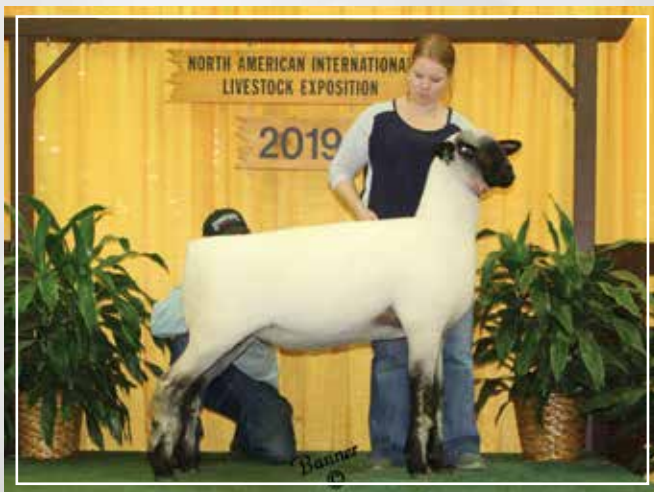
Champion Ewe
— SOLD AT **OHIO SALE**



UP & COMING RAM **"GOLD RUSH"**
1ST PLACE AT SD STATE FAIR



FALL EWE **"SWISH"**
1ST PLACE AT SD STATE FAIR
2ND PLACE AT MN STATE FAIR • 2ND PLACE AT KILE



JANUARY EWE **"STICKERS"**
2ND PLACE AT AAJA • 2ND PLACE AT MN STATE FAIR
3RD PLACE AT SD STATE FAIR • 3RD PLACE AT KILE

MARSHALL *Sheep Company*

ARLINGTON, S.D.
BARRET, KRISTIN, WYATT & EMERY

605-695-2528 • BARRETMARSHALL@HOTMAIL.COM

SPECIAL THANK YOU TO DYLAN NOHNER AND KATHERINE KUYKENDALL FOR ALL THEY DO FOR US!

2019 AHSA SCHOLARSHIP WINNERS



Mikara Anderson – Three Springs, Pennsylvania

Parents: Gerald and Holly Anderson

- Freshman at Penn State University
- Has raised and shown Hampshires for 4 years.
- Southern Huntingdon Class of 2019 Valedictorian
- Premiere Hampshire Exhibitor at PA Farm Show for 3 years, KILE for 2 years and in 2018 at the Big E.
- Hampshire Top Gun Award at the All-American in 2018.
- National FFA Sheep Production Proficiency Award Winner 2017
- Held officer positions in the Southern Huntingdon County FFA, National Honor Society, Southern Pride 4-H, FBLA, Library Club and the Track & Field Captain.
- Pennsylvania Fair Queen
- Volunteers at the County Fair Office, Fire Department, Fill A Glass with Hope, Humane Society, Food Pantry and Area Library.

Danielle Houghtaling – Doland, South Dakota

Parents: Jan and Kylene Houghtaling

- Freshman at South Dakota State University
- Raised and shown Hampshires for 10+ years
- Doland Class of 2019 Valedictorian
- State 4-H Judging Contest Top 5 Individuals
- National FFA Plant Systems Division 5th Place Individual
- FFA State Livestock Evaluation CDE 2nd High Individual
- Held officer positions in the Doland FFA, South Dakota District 1, Doland High School Student Body, Northern Lakes Region Representatives and the American Junior Hampshire Sheep Association
- Volunteers in FFA and the Doland Pride Committee
- Shows at the county, state and national level



**2020 AHSA SCHOLARSHIP DUE SEPTEMBER 1ST
APPLICATIONS CAN BE FOUND ON THE AHSA WEBSITE**

KING DIAMOND RANCH

★ *Happy New Year! We are looking forward to what this decade will bring.
Here is a throwback to a few of our Champions over the past 10 years!* ★



DAISY
Champion Ewe 2015
CA State Fair Junior Show



THOMAS
Champion Ram 2018
CA State Fair Junior & Open Show



DELANEY
Champion Ewe 2017 &
2018 CA State Fair Junior Show



KING ARTHUR "ARTIE"
Supreme Champion Ram
2016 CA State Fair Junior
Show and Cow Palace

Arnold, Dina, Courtney and Amanda King

Questions - Contact Dina Tesconi-King

dinamking@hotmail.com | 707.322.3469 | Visit our Facebook Page - King Diamond Ranch

AMERICAN HAMPSHIRE SHEEP ASSOCIATION STORE

VARIETY OF ITEMS,
COLORS, & SIZES!



CHECK OUT SOME OF THE NEW ITEMS!
[HTTPS://AHSAAPPAREL.ITEMORDER.COM/SALE](https://ahsaapparel.itemorder.com/sale)

American Hampshire Sheep Association

Online Sale Entry Form

Hosted by www.integritylivestocksales.com

Sale Rules:

- These sales are an online event sponsored by the AHSA. The sales will be hosted by www.integritylivestocksales.com and will be held on April 28th & June 9th.
- This sale is for both rams and ewes, yearlings and lambs. New this year semen sales.
- A \$10 per head entry fee for ewes, \$50 per head entry fee for rams and \$10 entry fee for semen, must be included when making your entries. Additionally, 8% of the final selling price will be charged on all animals and semen receiving a bid.
- You must be a 2020 paid member of the American Hampshire Sheep Association to enter animals or semen in these online sales.
- The sale is open to registered Hampshire yearling ewes and rams and registered Hampshire ram and ewe lambs and semen from registered Hampshire rams.
- April 20th is the deadline for the April sale and June 1st is the deadline for the June sale.
- An application for registration with appropriate fees or registration certificate must be provided with your entries.
- High quality pictures that show at least a side view and rear view of the animals are recommended and these must be provided by entry deadline. Videos are accepted as well. Ideally these would be emailed to asregistry@gmail.com.

Consignor _____ Phone Number _____

Consignor's website _____ AHSA Futurity Nominated? _____

Flock Tag Number _____

Sire _____ Dam _____

Date of Birth _____ DNA _____

Location of Sheep _____

Starting Price _____ Reserve price (if different than starting price) _____

Delivery Options _____

Comments _____

Please send this form along with entry fee and registration application or certificate to the American Hampshire Sheep Association, PO Box 231, Wamego, KS 66547. For more information contact Jeff Ebert at 785-456-8500.

Highland Hampshires



contemplation

noun con-tem-pla-tion \ ,kän-təm-'plā-shən , -tem-\

: an act of considering with attention

: the act of regarding steadily

: INTENTION, EXPECTATION



**Burns Stock
Farm 1516**

***2nd Place
Early Yearling
Ewe – NAILE
National
Southdown
Show**

Gary T. Klug
939 Hazel Rd. Harlan, IA 51537
(712)202-4461
klughihamp@tm.net



Lynn K. Lee—Flock Emissary
Ryan Bingen—Aesthetics Engineer

Dylan R. Klug
1033 1st Ave. Grafton, WI
dklug2001@gmail.com

KLUG HH 18-151

1st Place

Yearling Ewe

**2019 MN Bred Ewe
Sale**

**Thank you Anja
Johnson**

**Good Luck with
your purchase!!**

THE JUNIOR CORNER

A Note from the AJHSA President:

Hello!

Junior Board

President -
Morgan Hauger, IN

Vice President -
Campbell Coyle, KY

Secretary/Treasurer -
Danielle Houghtaling, SD

Board Members:

Jenna Sullivan, CT
Amanda King, CA
Faith Houghtaling, SD
Grace Powell, TN
Taylor O'Brien, KS
Haleigh O'Brien, KS

**Don't forget to follow the
American Junior
Hampshire Sheep
Association Facebook
Page!**

**Thank you to every-
one that made it to the
Jr Member Mixer at
NAILE!**



My name is Morgan Hauger. I am currently serving as the AJHSA President. I am excited about this upcoming year and the events of the Hampshire Association!

As a junior board, we are looking forward to many exciting new things for our junior Hamp members! Over the next few months, the junior board will be introducing themselves with a "Meet the Junior Board" post featuring each member on our Facebook page. We want to tell all Hampshire breed members a little about ourselves and our Hampshire flocks.

Last month at NAILE, we held our annual junior board meeting and the Member Mixer. The junior board held officer elections and discussed plans for the upcoming year. Our Member Mixer was a success with an ice breaker, corn hole tournament, pizza and drinks, and a skillathon! We had a great turn out and had loads of fun!

At the start of the new year, we will be introducing Hampshire members with a feature called "Member Monday." Member Monday will showcase some of our Hampshire breeders, both senior and junior members, with details on their flock, history of their story, and some just for fun bits!

The junior board and I are looking forward to a fantastic year with engaging opportunities and experiences for all junior members! Let's have a great year full of memories, laughs, and great Hampshire sheep!

Sincerely,
Morgan Hauger
AJHSA President

IMPORTANT REMINDERS

- Junior Dues: \$15.00 Senior Dues: \$25.00
- Don't forget your 2020 dues!
- Junior Member until they exceed their 21st Birthday on January 1st
- We want to recognize you!! Make sure to complete a Member Monday form so that we can recognize you on Facebook.
- AHSA Junior Scholarship - Deadline September 1st, 2020
- Midwest Junior Preview Show - May 30th, 2020 in Mendon, IL
- Midwest Stud Ram Sale - June 22-2, 2020 in Sedalia, MO
- AHSA Junior Show - June 23rd, 2020 in Sedalia, MO
- All-American Junior Sheep Show - July 2nd-5th, 2020 in Lansing, MI



State Hampshire Associations

OHIO HAMPSHIRE SHEEP ASSOCIATION OFFICERS

President: Dan Shell
1901 Doak Road
Midland, Ohio 45148
Phone: 937 302-8367
Email: Shellshampshires@hotmail.com

Secretary/Treasurer: Marla Shell
1901 Doak Road
Midland, Ohio 45148
Phone: 614 496-8575
Email: mdshell319@hotmail.com

Vice-President: Frank Sexten
3420 State Route 380
Xenia, Ohio 45385-9735
Phone: 937 371-1392
Email: fsexten@gmail.com

Board of Directors:
Denise Deal
Frank Sexten

This information was provided by state Hampshire associations. We encourage all of our state Hampshire associations to submit information on their activities for each issue of the Hampshire Heartbeat.

ILLINOIS HAMPSHIRE SHEEP ASSOCIATION OFFICERS

President: Megan Mumm
49 CR 1300 N
White Heath, IL 61884
Phone: 217-377-2073
Email: meganmumm@hotmail.com

Secretary/Treasurer: Bill Chapin
5680 E Reed Rd
Coal City, IL 60416
Phone: 815-954-5129
Email: chapinhamps@gmail.com

Directors:
Chris Cahoon
Luke Benjamin
Chris Meyer
Charlotte Toohill

New England Hampshire Sheep Association Officers

President: Kyle Thayer
Vice President: Darlene Leary
Treasurer: Tina Fisk Colt
Secretary: Sue Searle

MINNESOTA HAMPSHIRE SHEEP ASSOCIATION OFFICERS

President: Rod Scheller
3646 County Rd 37
Monticello, MN 56362
Email: rodscheller@gmail.com

Vice-President: Bruce Bakken
29557 State Hwy 13
Hartland, MN 56042
Email: bjbakken54@gmail.com

Secretary/Treasurer: Art Frame
16465 Paul Ave.
Worthington, MN 56187
Email: aframe@nobleswildblue.com

Director: Mark Christensen
1561 250th Ave.
Tyler, MN 56178
Email: mcchris@frontiernet.net

Director: Gary T. Klug
Box 383
Harlan, IA 515372
Email: klughihamp@tm.net

Director: Reid Merrill
2163 250 St
Canby, MN 56220
Email: rvmerrill50@gmail.com

Director: Todd Schmidt
21407 775th Ave
Albert Lea, MN 56007
Email: rschmidt76@gmail.com

Director: Tom Bobendrier
1351 US Hwy 75
Pipestone, MN 56164
Email: shebob@svtv.com

SOUTH DAKOTA HAMPSHIRE SHEEP ASSOCIATION OFFICERS

President: Brent Larson
20205 477th Ave
White, SD 57576
Phone: 605-633-1561
Email: larson76@gmail.com

Vice President: David Juntunen
43950 187th Ave
Vienna, SD 57271
Phone: 605-628-2949
Email: jute@itctel.com

Secretary: Kristin Marshall
45491 204th ST
Arlington, SD 57212
Phone: 605-770-0132
Email: marshallke83@outlook.com

INDIANA HAMPSHIRE SHEEP ASSOCIATION OFFICERS

★ **President:** Dan Myers ★
833 E CR 350 S
Logansport, Indiana 46947
★ Phone: 574-355-6840 ★
Email: indianahamps@gmail.com

★ **Secretary/Treasurer:** Kris Myers ★
833 E CR 350 S
Logansport, Indiana 46947
★ Phone: 574-355-6840 ★
Email: indianahamps@gmail.com

PENNSYLVANIA HAMPSHIRE SHEEP ASSOCIATION OFFICERS

President/Secretary: Mindy Holtry
717-776-4192

The main focus of the PHSA is to support junior Hampshire exhibitors at the Keystone International.

Call or visit our website for a free catalog!



www.ketchamssheepequipment.com



Designing & manufacturing superior quality equipment for over 42 years in Edwardsville, Illinois USA!

Check out our updated 2020 Show Schedule! Receive free delivery to any of the shows we are attending!

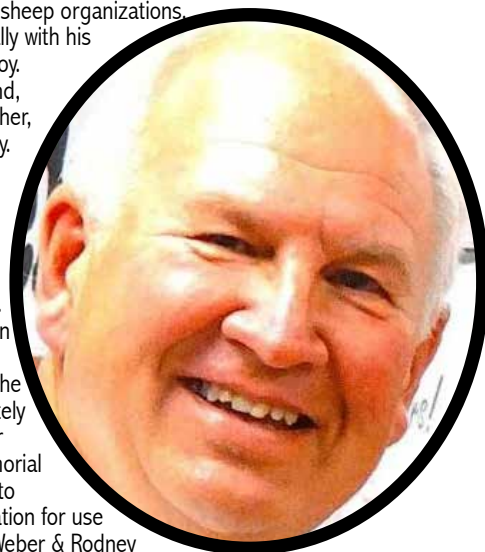
Tilt Tables
Chute Systems
Big Bale Feeders
Mineral Feeders
Walk Through Gates
Fence Line Feeders
Trimming Stands
Bucket Holders
Lambing Panels
Creep Feeders
Panels

KSEM, Inc.
6471 Miller Drive
Edwardsville, IL 62025
(618) 656-5388

Kim Kerry Ketcham, age 66, of Edwardsville, Illinois, passed away unexpectedly but peacefully, on Tuesday, Jan. 28, 2020 in Colorado. He was born on March 2, 1953 in Highland, Illinois, the son of the late Theodore and Delores (Schoenleber) Ketcham. Kim is survived by his wife, Joan Marie (Schwalb) Ketcham, whom he married April 26, 1975 in Edwardsville. Also surviving is his son, Kerry Kendall and wife, Jessie (Henkhaus) Ketcham; and their children, Kylie Kendyl and Koy Kerry Ketcham; one daughter, Katie Kay (Ketcham) and husband, Justin Chambers; two sisters; and several and nieces and nephews.

Kim was actively involved in 4-H and FFA throughout school. He graduated from Edwardsville High School in 1971 and then attended trade school. He has been a member of the Operating Engineers Local 520 for 49 years. At age 10, Kim started showing Suffolk sheep. He began traveling the country showing and fitting sheep for Bill Heggemeier. While traveling the country he saw a need for equipment to be used specifically for sheep, and this is how Ketcham's Sheep Equipment began in 1977. Showing sheep became a family tradition with his children and grandchildren. Kim was the foundation of the Ketcham family legacy. After 43 years in business, people that started out as customers became lifelong friends. Serving the sheep industry gave him great joy. He was a member of the Suffolk Sheep Association and a board member for several years. Kim was a big supporter of the numerous sheep organizations. He enjoyed hunting, especially with his son, Kerry and grandson, Koy. Kim was a wonderful husband, a loving father and grandfather, and a dear friend to so many. He will be missed by all.

Visitation will be from 3 p.m. to 8 p.m. on Friday, Feb. 7, at Eden Church, 903 North Second Street, Edwardsville. Visitation will resume at Eden Church on Saturday, Feb. 8, from 9:30 a.m. to 11 a.m. The funeral service will immediately follow at 11 a.m. with Pastor Paul Militzer officiating. Memorial contributions may be made to Madison County Fair Foundation for use by the Sheep Department. Weber & Rodney Funeral Home is in charge of the arrangements. Online condolences may be expressed at weberfuneralhome.com.



Hewlett

Club Lambs

NEW SEMEN STORE FOR 2020 AT HEWLETTFARMS.COM



Like and Follow us on Facebook at Hewlett Club Lambs
www.hewlettfarms.com

Curtis Hewlett
620 779 5533

Ed & Connie Hewlett
620 330 4140 & 4141

Independence KS 67301

AMERICAN LAMB BOARD: FAQs

Building awareness and expanding demand for American Lamb and strengthening its position in the marketplace are ongoing efforts, and the ALB board of directors is dedicated to the cause. The board will next meet January 22 during the American Sheep Industry's annual convention in Scottsdale, AZ. While the American Lamb industry has some familiarity with the American Lamb Board (ALB), questions still come up. Here are answers to frequently asked questions.

Q: What does the ALB do?

A: The American Lamb Board's 13 members determines the direction of programs conducted on behalf of US lamb producers who contribute through the American Lamb Checkoff. The work of the ALB is overseen by the U.S. Department of Agriculture and the board's programs are supported and implemented by the staff in Denver, CO.

Q: What programs does the ALB conduct?

A: ALB conducts promotion, research and information programs with the goal of creating greater demand and profitability for the entire industry. ALB does not promote imported lamb. It does not promote wool. ALB is not funded by dues and is forbidden by law to influence legislation. It exists to promote lamb to consumers and provide information to help producers raise lamb more efficiently and effectively.

Q: How is ALB funded?

A: The program is funded through mandatory assessments collected under the federally mandated Lamb Checkoff program. There is a live weight assessment of \$.007 per pound paid by the seller of sheep or lambs and a first handler assessment of \$.42 per head assessment paid by the entity who owns sheep or lambs at the time of slaughter. The assessments are remitted to the ALB. The Board's expenditures for administration are limited to 10% or less of projected revenues. All remaining revenues are expended on programs related to promotion, research and information for the American Lamb industry.

Q: Who is represented on the ALB?

A: The Board represents all sectors of the American Lamb industry including producers, feeders, seedstock producers and processors. The 13-member Board, appointed by the Secretary of Agriculture, serves without compensation. Members are nominated by qualified organizations, including the American Sheep Industry Association and National Lamb Feeders Association.

AHSA OFFICE UPDATE

The AHSA office staff has been busy with dues renewals for several associations over the past 45 days. As we head into February and March which are typically the slowest months of our year it is a good time to look over your registrations to see if you missed any or to get your fall lambs and those early spring lambs registered before the busy sale season.

The AHSA staff currently consists of Amber Thompson, Director of Member Services. Amber is mostly responsible for the increased presence on social media among many other duties. The Office Manager, Rene Roberts is catching on to what we do here in this office as it is not a typical office setting with all the different breeds we serve. Janette Fund and Joelle Sylvester are responsible for most of the registry work for the 35

associations that we serve. Just recently we have added the Gotland Sheepbreeders Association of North America, the North American Perendale Association and the American Corriedale Association to the associations we serve.

Turning our attention to the American Hampshire Sheep Association, although our registration and transfer numbers were off slightly in 2019, we did end the year with an increase in paid members. This tells me there are many new people excited about Hampshires. Your AHSA board has finalized plans for a yearling ewe futurity starting in 2020. They also decided to try the junior show at Sedalia, during the Midwest Stud Ram Sale, one more year. If this show is important to you as a junior member make plans to come and exhibit in 2020. Details on both of these items can be found elsewhere in this issue and on the website. We look forward to a busy spring and summer sale season for Hampshires. There are numerous online sales that will have registered Hampshires on them. There are also still several public auctions that contain Hampshires, so make plans to attend either as a consignor, buyer or both.

If our office can assist you with your Hampshires, please do not hesitate to contact us.



YOUNG LEADER OPPORTUNITY

The American Lamb Board (ALB) is seeking three candidates to represent the United States in the Young Guns Leadership Program at LambEx. American Lamb Board believes producer education is of the utmost importance for the industry's long-term viability of the American Sheep Industry. The American Sheep Industry Association is pleased to share this opportunity with its Young Entrepreneur stakeholders.

The program is intended to broaden the understanding of new innovation and technologies in sheep production practices. This leadership development forum will provide innovative and progressive opportunities for our young producers to increase U.S. production efficiencies and provide a consistent, high quality, premium product for continued lamb demand growth and increasing the U.S. market share.

Each country (AUS, US, NZ) will select 2-3 producers between the ages of 22 and 40 years of age who exhibit future leadership potential to participate in the forum. The program July 1-3, will kickoff in Melbourne at the 2020 LambEx. Airfare, hotel, and other travel expenses will be covered for the participants that are selected by the ALB's selection committee to represent the United States. Participants will be responsible for some meals as well as incidentals.

Applicants must complete the written application, which is available at <https://americanlamb.wufoo.com/forms/w1q62t1m0ppa6dm/> or by contacting the ALB office at 303-759-3001.

Applications are due on February 28th. Review of applications will be the first week of March. Phone interviews may be requested following the review. For questions and more information contact the ALB office at info@americanlamb.com or 303-759-3001.

ASI CALLS FOR DIRECT PAYMENTS TO SHEEP PRODUCERS

The American Sheep Industry Association formally requested this month that Secretary of Agriculture Sonny Perdue and U.S. Trade Representative Robert E. Lighthizer consider direct payments to sheep producers as part of any future Market Facilitation Program.

"Our producers overwhelmingly support efforts aimed at strengthening the United States' position on free and fair trade and are appreciative of the administration's efforts to rectify long standing disparities in the trading actions of China. To that end, we are optimistic given the recent positive steps taken to sign the first phase of an agreement," wrote ASI President Benny Cox. "Yet, our understanding is that through this process China will maintain retaliatory tariffs, specifically tariffs on raw wool and sheepskins (pelts). That means that we are preparing to head into a second shearing and marketing season with the effective loss of our largest export market.

"In the first round of the MFP, the USDA identified \$17 million in American lamb purchases. That option has not impacted markets or provided any revenue to sheep producers for sheepskins and certainly not for wool. We ask that the program specific to our industry be reconsidered to focus on wool and sheepskins as the primary targeted products.

"We are hearing clearly from producers across the nation on the impact this is having to their bottom line and profitability. Without the ability to sell their wool, they are completely reliant on the slaughter market, where the loss incurred to sheepskins alone is eliminating their profitability. As we come up on our annual convention at the end of this month, I fully expect this to be a major topic and already our state affiliates have circulated policy directives urging ASI to continue to pursue a pathway to diminish the effect of this trade disruption on our wool and sheepskin market."

The letter was recently shared with ASI's state contacts, and the association asked that they in turn share it with their congressional delegations.

HAMPSHIRE HERITAGE AWARD

JACK MASSERA SALINAS, CA

ESTABLISHED 1949

In 1949, I joined 4-H and used my paper delivery money to purchase three Hampshire ewes with four Southdown-sired lambs. A lamb from one of those Hampshire ewes became my first market lamb and won reserve champion at my county fair. This marked the beginning of my love of raising Hampshire sheep and I've had them ever since. In 1954, I won the State Sheep Shearing Contest at the California Ram Sale. I made feed money by shearing local flocks, including my future father-in-law's sheep. I sheared all my own sheep until I was 65.



My mentor in the sheep industry was Spelman Collins, who was well-known in the sheep industry and often judged California sheep shows. A professor at Cal Poly, Spelman loved to share his knowledge and experiences and I enjoyed spending time with him. He gave me great advice about my Hampshire and

This was a local news article from 1951 highlighting wins of the newspaper's paper deliverers (including me) at the Salinas Valley Fair in 1951, where I had my first champion lamb

Saturday, April 14, 1951 SALINAS CALIFORNIAN
**Making Good Use of Profits . . .
 Salinas Californian Carriers
 To Show Animals at S.V. Fair**



Southdown flocks and encouraged me to attend Cal Poly, where he was an Animal Science Professor. With his help, I did well showing purebred sheep throughout my 4-H and college years and graduated from Cal Poly with degrees in animal science, biology and a teach credential. (I was an ag teacher early in my career.) In 1956 Spelman wrote a book titled, "Profitable Sheep" and gave me a signed copy, which I still have today. When I see other sheep producers from my era, we often talk fondly about Spelman, who was a mentor to many of us.

In 1954 State Sheep Shearing Contest at the California Ram Sale.



There is just one previous generation in my family that has raised Hampshires. My father became involved with the sheep when I did in 1949 and raised Hampshires and Southdowns with my throughout his life. We have several current generations involved with the Hampshires. Raising sheep is a family affair. Today, we have the fourth generation of Masseras working with Hampshire sheep. My father and I worked the sheep together when I was growing up, my daughter and son both showed sheep in 4-H, and today my daughter and I show the sheep at California shows. My grandchildren love helping on the farm and I'm doing my best to make successful sheep breeders out of them!



HAMPSHIRE HERITAGE AWARD

FORT DONNALLY FARM JOHN R. JOHNSON

LEWISBURG, WV ESTABLISHED 1959

I started raising baby lambs at the age of 9 or 10. I purchased my first Hampshire ram from Ivan Barlow in 1948. In 1959, I purchased 8 or 10 head of Lunsford ewes to start my Hampshire sheep business. Until this time I just had a commercial crossbred operation. I used money from my FFA projects to be able to purchase my Lunsford ewes.

Dr. James F Mann was responsible for encouraging me to start breeding Hampshires.

I was the first in my family to breed Hampshires. Now there are four generations involved with Hampshires. They include myself, my daughter, my son, my granddaughter, my grandson and my great grandchildren.



My daughter, Vickey Johnston Neel, always had a love for the sheep. She was involved when her daughters showed and now her grandchildren. She always helped on the farm with whatever tasks needed to be done. She works for the USDA Farm Service Agency.

My son, Don E Johnston, was involved in 4-H and showing for 10 years himself and showed all over the country with the farm flock.

My granddaughters, Jennifer Ervin and Brianne Williams, were involved in 4-H and showed all 10 years. Jennifer helped with the family flock and now helps with her children that are showing. Brianne graduated from WVU with a degree in Animal Science and went on to Mississippi State Vet School.

My grandson, Devin Johnston, was involved in 4-H and showed all 10 years as well. He graduated from WVU with an Ag degree and works for the WV Department of Agriculture.

My great grandchildren, Josi, Hailey & Peyton Ervin, are showing sheep in 4-H and enjoy helping with the family flock.



HAMPSHIRE HERITAGE AWARD

SILVER SUMMIT FARM / SYNDICATE SHOW LAMBS

LAWRENCE, KS ROCKY SWEARINGEN

ESTABLISHED 1989

In October 1987, I purchased one ram and 10 ewes from a local breeder that was dispersing his flock. My father as well as Bruce and Jill Lane were responsible for encouraging me to start breeding Hampshires.

There is one previous generation besides myself that has raised Hampshires in my family. My father had some Hamps in the mid 1960's. There are currently two generations of my family raising Hamps. My daughter is a large part of the flock management along with my wife.

Holly has received numerous leadership awards and scholarships from her work with the sheep including a scholarship from the American Hampshire Sheep Association and the All-American Junior Sheep Show.



Our flock has produced numerous Champions at state fairs over the last 30 years in Fitted, Slick, Wether Sire and market lamb divisions. We have had Champions and class winners at National sales in Sedalia, Top of the Rockies, Oklahoma Black and White and Louisville Spotlight sales. We have had three different Champion Slick Rams in the Junior Show at NAILE, one in the Open Show, Champion Hampshire Ewe in the Junior Show at NAILE and numerous class winners.



I have served as an adult advisor for the American Junior Hampshire Association and my daughter Holly was a Junior Ambassador. My father, Tom, did the artwork for the 100 year anniversary of the Hampshire Association as well as the logos.



We currently help organize and put on many Junior Shows. These shows vary from regional jackpots to the American Royal. I have judged numerous local, district, state, regional and National Shows. Currently we run about 40 Hampshire and crossbred wether style ewes and 30 commercial Hairsheep. We are still located on the original family farmstead that I grew up on.

HAMPSHIRE HERITAGE AWARD

RYAN HALLIGAN

WINCHESTER, KY

ESTABLISHED 2009

Growing up I was not from a farming family and was not related to anyone with a farm close by. I was fortunate to be able to have family friends that allowed me to keep my show lambs at their farm across the county. It was a short 15 minute drive over to their place, but it was a gateway to my future career and lifestyle. 10 years ago, I purchased a March fitted ewe lamb in the Stars of Louisville Hampshire Sale and that was my beginning in the Hampshire business. At the time I was a sophomore in high school looking to grow my FFA and 4-H project by raising sheep. I had shown market lambs for a few years and was somewhat versed in animal husbandry, but not experienced in raising sheep year-round. I had many local leaders in my county that assisted me stemming from my high school Ag teacher, Kylene Douglas, to JR Zinner another Ag teacher in the county. Over time I built my flock up to five quality Fitted type ewes and showed my lambs at county fairs, the Kentucky State Fair and NAILE several times. In 2019 I won the Rising Star Ewe Lamb Award from the AHSA which provided me another quality ewe from the Quam family of Minnesota. She became a cornerstone foundation ewe for

my flock along with a ewe purchased from the Bobendrier family later on that fall. Those genetics became a solid foundation for a small fitted program which allowed me to attain Champion Ewe honors at my county fair, a few other county fairs and Reserve Hampshire Ewe at the Kentucky State Fair Junior Show.



Stanley Poe and I in 2010 receiving the Rising Star Ewe Lamb Award

After graduating high school I evaluated my size and scale of my flock and chose to shift directions to more of a wether style ewe flock. Family friends introduced me to Mike Hancock of Eubank, Kentucky and he has been a great friend and mentor to me ever since. Currently my wife and I operate a small flock of about 20 ewes in Winchester, Kentucky. We typically breed our ewes natural style with rams owned in partnership or leased from Mr. Hancock. In the past we have utilized AI and will look to increase utilization of those technologies as well as ET in the future. Typically, we market our sheep to local 4-H and FFA members but also utilize some online sales as well. After high school I was fortunate to be elected to Kentucky 4-H state president while I attended community college and eventually obtained my Associates of Science. My FFA SAE project of Diversified Livestock Production included my sheep operation, a small cattle herd, and a horse boarding operation which was selected as state champion my final year of FFA involvement. After community college I went to the University of Kentucky where I graduated with a bachelor's in agriculture economics with minors in business and political science. Currently I am employed with Valvoline Inc. My wife comes from a tobacco and

STORMS HAMPSHIRE, DORSETS, AND BORDER COLLIES

WWW.STORMSHAMPSHIRE.COM | MIKE, LEE, AND SUZANNA STORMS | 309-645-3052

STORMS 743 "TRUCK YEAH" QRNNFF



2018 Champion Slick Sheared Hamp Ram Open & Jr Show
2019 Champion Slick Sheared Ram
Grand Champion Hampshire Ram

CHA-CHING RRNNFF



*We have border collies
for sale!*



2019 NAILE NATIONAL GRAND CHAMPION SLICK SHEARED RAM OPEN SHOW
SIRE BY STORMS 621, EXCESSIVE FORCE

2019 MIDWEST JR PREVIEW SHOW CHAMPION HAMPSHIRE RAM
SIRE BY STORMS 621, EXCESSIVE FORCE

2018 NAILE NATIONAL CHAMPION SLICK SHEARED RAM OPEN & JR SHOW
SIRE BY STORMS 621, EXCESSIVE FORCE

2018 CHAMP HAMP EWE LOUISIANA STATE FAIR
SIRE BY STORMS 661, DEADLY FORCE

2018 CHAMPION HAMPSHIRE EWE, IOWA STATE FAIR.
SIRE BY STORMS 621, EXCESSIVE FORCE

2016 CHAMPION PREMIER LAMB ON THE RAIL AT THE ILLINOIS STATE FAIR
SIRE BY STORMS 551 PURCHASED IN OUR ONLINE SALE

2016 RES. CHAMPION HAMPSHIRE EWE, IOWA STATE FAIR.
SIRE BY STORMS 565, A RAM PURCHASED IN OUR ONLINE SALE

Isn't time you got a Storms ram?

*We only use FF rams so we will have plenty of Dwarf free rams in 2020!
Congratulations & thank you to Finnegan Porter Livestock on a job well done!
Don't forget to check out our newly established Dorset flock!*

PURPLE

Incorporated.



1st Place Flock + Premier Exhibitor 2019 NAILE

The results of a shared goal, a progressive breeding program and a trusted friendship:

**Reserve Champion Fitted Ram | Reserve Champion Fitted Ewe | Res. Sr. Champion Fitted Ram
1st Place Pair of Ram Lambs | 1st Place Young Flock | Best Headed Ewe
2nd Place Pair of Yearling Ewes | 4th Place Pair of Ewe Lambs**

**Be sure to watch for the Baa Baa Acres and Plaza Livestock consignments in the
HEART OF A CHAMPION ONLINE HAMPSHIRE SALE, Thursday, April 23 at wlivestock.com.**



PLAZA
Livestock

ROD AND TERRY ANDERSON
JUNEAU, WI / PH: 920.386.2540

SKIP AND KELLI ANDERSON
FARGO, ND / PH: 701.205.9764

THE BRAD AND ANNA PAYNE FAMILY
AGENCY, MO / PH: 630.688.2583



RESERVE CHAMPION FITTED RAM
 BBA 299 Vantage Point / Sire: BBA 219
 Sold to Shear We Go and Strawberry Fields



RESERVE CHAMPION FITTED EWE
 BBA 286 Donna / Sire: BBA 262 Abracadabra
 Bred to Held Runaway, a mating we are excited about!



RES. SR. CHAMP FITTED RAM
 Plaza Hamps 1420 Riggs / Sire: Held Runaway
 Watch for his influence in our 2020 lamb crop.



2ND FITTED FEB. RAM LAMB
 BBA 308 Winchester / Sire: Held Runaway
 The next piece in the BBA puzzle.



RES. CHAMP RAM NAILE JR. SHOW
1ST FITTED MAR. RAM LAMB (OPEN)
 Plaza Hamps 1509 Talisman / Sire: BBA 219



5TH MARCH EWE LAMB
 Plaza Hamp 1505 / Sire: Plaza 1420 Riggs



**If everyone is moving forward *together*,
 then *SUCCESS* takes care of itself. - Henry Ford**

HAMPSHIRE JUNIOR SHOW

The AHSA is sponsoring a show for Junior Hampshire Members at Sedalia on Tuesday evening, June 23rd, 2020. There will be classes for yearling ewes and ewe lambs. Fitted and Slick-Shorn classes will be offered as well as three age groups of showmanship classes.



Requirements:

- * Must be a Junior Member of the American Hampshire Sheep Association
- * No entry fee for your first entry
- * \$15 entry fee for all animals after the first entry
- * Showmanship is free!



Sale discounts to be used on Hampshires at the Midwest Stud Ram Sale, as well as, cash prizes will be offered. This includes \$200 for the Champion ewe, \$100 for the Reserve Champion Ewe, and \$100 for each showmanship class winner.

If numbers do not grow the AHSA will discontinue this Junior Show.

KLEINERT HAMPSHIRE

"Quality Breeding Lasts Forever"



KLEINERT 5228

KINGTUT x TAKEDOWN DAUGHTER

2020 lambs will be sired primarily by rams 5113, 5134 (Master Touch's full brother), and 5228.



MASTER TOUCH

KLEINERT 4690 x TAKEDOWN DAUGHTER

KLEINERT 5113

MILLER 0-470 x KLEINERT 4690 DAUGHTER

Yearlings in the production sale will be primarily sired by 5113 (Miller 470 son) and 5037 (Miller 175 son)



Spring Sale -

April 4th

Production Sale -

May 2nd

hosted by wlivestock.com

MIKE KLEINERT | KLEINERT HAMPSHIRE
2873 N 1600 EAST RD. | CLIFTON, IL 60297

CALL OR TEXT: 815.383.0962 | KLEINERTHAMPSHIRE@YAHOO.COM | WWW.KLEINERTHAMPS.COM

Make sure to keep an eye out for the stars of our 2020 show flock!



Isabella is a February 2019 granddaughter of our Herrig ewe that was National Sale Champion in Sedalia in 2011. Isabella is sired by "Apollo". She caught the eye of a lot of you at the fairs this year, and she just keeps going! Tremendous ewe line!

Olivia was the 1st February Ewe Lamb at the Iowa & Minnesota State Fairs and 4th at the National Hampshire Show. She is out of our Herrig ewe that was National Sale Champion in Sedalia in 2011. Olivia is sired by our long-standing Held Stud ram. Super Star!



Apollo was the 2nd Yearling Ram at the Wisconsin, Iowa & Minnesota State Fairs in 2019. His half sister was Reserve Senior Champion at the 2014 National Hampshire Show as a yearling & perished in our 2015 barn fire. We have been waiting for another super star to emerge from this bloodline. Apollo sired "Isabella" and most of our top 2019 lambs. We can't wait to see his 2020 lambs!

Like our Facebook page "Pullin's Hampshires" to keep up with our latest flock news!

PLAN NOW TO ATTEND!

Interstate Center Bloomington, IL

April 18 Note the new one-day format!

ENTRIES DUE
**FEBRUARY
21, 2020!**

PLAN TO CONSIGN
AND ATTEND THE:

ILLINI ALL BREEDS SPRING SALE

Show: 9:00 am • Sale: Equipment at 1:00 pm • Sheep at 2:00 pm

Auctioneer: Tyler Laddell

Judge: Alex Wolf, OH

STATE 4H & FFA JUDGING
CONTEST: 10:30 AM

JUDGING CONTEST
OPEN TO THE WORLD!

THIS QUALITY SOLD AT LAST YEAR'S SALE!

Sale Headquarters

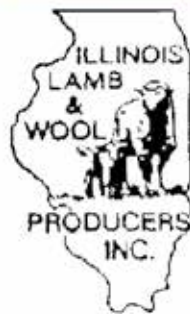
Comfort Suites,
Bloomington, IL - 309/834-4700

Block Name:

"Sheep Sale"
Book by March 15th
for discounted rate!

**ONLINE VIEWING
AVAILABLE**

Sale Sponsored by:



Kendrick Hamps, IL Champion Ram, sold to Willow Pines, MN for \$700

Banner
Sale Management Service

ONLINE ENTRIES AVAILABLE AT:

www.bannersheepmagazine.com

or contact us at:
P.O. Box 500

Cuba, IL 61427 • 309/785-5058

AHSA ONLINE SALE

The American Hampshire Sheep Association will sponsor two spring online sales. These sales will be hosted by integritylivestocksales.com and will be held April 28th and June 9th. Entry forms with rules may be found on the Hampshire website (www.hampshires.org), as well as in this issue of the Heartbeat. The entry deadline will be no later than ten days before the date of the sale. These sales will offer yearling rams and ewes as well as ram and ewe lambs. New this year with these two online sales is the opportunity for breeders to sell semen of their top registered Hampshire rams. For more information please contact the AHSA office at 785-456-8500.

New Name! New Location! New Management!

May 7-9, 2020

**Darke County Fairgrounds
800 Sweitzer St, Greenville, Ohio**

Formerly "Big Ohio Sale"



Grand Champion Ram - Northern Star Livestock

*Eastern Regional Hampshire
Sale 2019 Results*

**Entries
close
March 1!**



Res. Grand Champion Ram - Plaza Livestock



Grand Champion Ewe - Marshall Sheep Co.

Auctioneers:

Gary Saylor
Danny Westlake
Bill MacCauley

**JUDGE FOR
HAMPSHIRE:**

Mark Johnson, IL



Res. Grand Champion Ewe - Golden Lane Farms

SHOW SCHEDULE: FRIDAY, MAY 8

CATTLE PAVILION, 8 A.M.

Southdown followed by Suffolk, Polled Dorset,
Horned Dorset, Oxfords,
Shropshire (National Show & Sale),
Hampshires (Eastern Regional Show & Sale)

SALE SCHEDULE: SATURDAY, MAY 9

CATTLE PAVILION, 9 A.M.

Breed order same as Show

Online Entries are available www.selectls.net



Gary: 937-597-7214 - gary@selectls.net
Pat: 937-935-1975 - pat@selectls.net
Jim: 937-658-3119 - jim@selectls.net
Dan: 937-243-5111 - dan@selectls.net

P.O. Box 25, Rushsylvania, OH 43347

www.selectls.net

REGISTRATION BY MEMBER

Stanley E Poe & Sons, IN	122	Alf Hampshires, WI	43
Johnson Family Show Stock, WI	104	Niemeier Hampshires, IL	42
Cabaniss Club Lambs, OK	99	DLT Family Farms, NE	39
Jim Miller, TX	98	Deckert Hampshires, ND	38
Norman & Martha Pilger, KS	94	Peterson Sheep Co, SD	37
Tom Slack, IN	90	Kyla, Kade & Kinsey Mennen, IN	36
Impact Hamps, WI	86	Iowa State University, IA	36
Michel or Betty Brink, SD	71	Morgan & Madison Hauger, IN	35
Ott Club Lambs, OK	70	Holly, Tye & Erin Kjeldgaard, NE	35
Jerry Flanders, IN	65	Plaza Hamps, MO	33
University of Wisconsin	61	Karberville Farms & Ranch, OK	33
Borcher Sheep Co, WY	61	Estes Show Lambs, CA	32
Bobendrier Hampshires, MN	55	Paradigm Hampshires, CA	31
Abigail Wilson, NC	54	Beau Mumm, IL	31
Pine Lawn Farm, MN	54	Golden Lane Farms, MN	31
Dustin Miller, TX	54	Cole Club Lambs, OK	31
South Dakota State University	53	Charmasson Club Lambs, OK	30
Travis, Tyler & Alicia Nelssen, KS	49	Pullin's Hamps, IA	30
NOC Sheep Center, OK	47	Howell Club Lambs, OH	30
Held's Hampshires, SD	44	Double F Club Lambs, KY	30
Houghtaling Hamps, SD	43	Derick Miller, TX	30
Bobendrier Boys, MN	43	Ty Thorson, WI	30

TRANSFER BY MEMBERS

Impact Hamps, WI	95
Cabaniss Club Lambs, OK	93
Jim Miller, TX	72
Lazy 5 Ranch, NC	62
Stanley E Poe & Sons, IN	60
Tom Slack, IN	57
Leland H Wheaton, MI	55
Robert G Koehler & Family, MN	37
Ott Club Lambs, OK	37
Thomas Frame & Sons, MN	35
D P MacCarthy & Son, OR	35
Taylor Stock Farm, KY	35
Charmasson Club Lambs, OK	33
Jerry Flanders, IN	32
Abby Nightingale, TX	32
Jo Dee Rexwinkle, OK	31
Megan Newland, KS	31
NOC Sheep Center, OK	28
Pine Lawn Farm, MN	27
Wrights Rocky Acres, MO	26
Tim & Sarah Fleener, PA	26
Roselawn Legacy, ND	25
University of Wisconsin, WI	24
Deckert Hampshires, ND	24
Richard Krackow, WI	23
Plaza Hamps, MO	23
Erwin Family Hamp Farms, OH	22
Minnesota Hampshire Sheep, MN	21
Kleinert Hampshires, IL	20
Johnson Family Show Stock, WI	20
South Dakota State University, SD	20

REGISTRATION BY STATE

Oklahoma	735	Utah	103	West Virginia	22
Indiana	678	North Carolina	97	Georgia	21
Wisconsin	596	North Dakota	93	New Jersey	18
Minnesota	561	Colorado	92	Maine	17
South Dakota	547	Oregon	91	Florida	15
Texas	520	Wyoming	86	Connecticut	14
Illinois	475	Tennessee	56	New Hampshire	14
Kansas	296	Montana	55	Delaware	8
Ohio	255	New York	53	Arkansas	7
Iowa	253	Virginia	50	Louisiana	4
Pennsylvania	241	Michigan	45	Rhode Island	4
California	223	Maryland	44	Alaska	2
Missouri	173	Washington	44	Alabama	2
Nebraska	135	Idaho	39	Nevada	2
Kentucky	134	Massachusetts	35		

**AMERICAN HAMPSHIRE SHEEP ASSOCIATION
130th ANNUAL MEETING
NOVEMBER 17, 2019 NAILE EXPOCENTER**

President Scott Van Sickle called the meeting to order at 6:35 PM.

Refreshments had been enjoyed by 103 members and guests prior to the meeting being called to order. Scott Van Sickle recognized past presidents and current board members who were in attendance.

Tom Bobendrier moved to approve the minutes of the 129th annual meeting. Morgan Hauger seconded. Motion passed.

Debbie Deal moved to approve the financial report as presented. David Lytle seconded. Motion passed.

Scott Van Sickle talked about the financial status and junior activities in his Presidents report.

Jeff Ebert gave an Executive Secretary report and introduced Amber Thompson, AHSA Director of Member Services. He also gave an update on registration numbers and Associated Registry.

The results of the Director elections were announced. District 3 Bart Cardwell, District 4 Philip Thomas, District 8 Katelyn Parsons and At-Large Derick Miller.

Breeder of the Year for 2018 was Impact Hamps-Brian, Jayci, Tierney and Calvin Reilly.

The Futurity results were announced as follows:

Fitted Purchased Division

	Name	Animal ID	Breeder
1st (Tie)	Kendall Smith, MO	Spoonster 19-12	Tinleigh Spoonster, MO
1st (Tie)	Ashton Daniels, MO	Borcher 9008	Borcher Sheep Co., WY
3rd	Averi Smith, IA	Alf 178-19	John & Brittany Alf, WI
4th	Averi Smith, IA	Hickman 1443 RR	Hickman Hampshires, WA
5th	Kendall Smith, MO	Spoonster 18-50	Tinleigh Spoonster, MO
6th	William Taylor, KY	Peterson 9722	Peterson Sheep Co., SD
7th	Connley Hoagland, MT	Spoonster 19-11	Tinleigh Spoonster, MO
8th (Tie)	Jocelyn Brummet, TN	Alf 180-19	John & Brittany Alf, WI
8th (Tie)	Grace Powell, TN	Bobendrier 18-178	Bobendrier Hampshires, MN
10th	Grace Powell, TN	Houghtaling 19-906	Houghtaling Hamps, SD

Fitted Raised Division

	Name	Animal ID	Breeder
1st	Tinleigh Spoonster, MO	Spoonster 19-12	Tinleigh Spoonster, MO
2nd	Tinleigh Spoonster, MO	Spoonster 18-52	Tinleigh Spoonster, MO
3rd	William Taylor, KY	Taylor Stock Farm 916	Taylor Stock Farm, KY
4th	Connley Hoagland, MT	7 Mile 1901	7 Mile Hampshires, MT
5th	Dylan Klug, WI	Klug HH 19-170T NNP RR	Highland Hamps, IA

Slick Shorn Purchased Division

	Name	Animal ID	Breeder
1st	Emily Stevens, OH	Westlake 0915	Danny Westlake, OH
2nd	Linsey Eddy, OH	Westlake 0925	Danny Westlake, OH
3rd	Chloe Stonesifer, PA	Fleener 1920	Fleener Hampshires, PA
4th	Corbin Coyle, KY	Poe 19283 AI	Poe Hampshires, IN
5th **	Morgan Hauger, IN	Poe 19113	Poe Hampshires, IN
6th	Rachel Olver, PA	FCL 1908	Fleener Club Lambs, PA
7th	Campbell Coyle, KY	Poe 19350 AI	Poe Hampshires, IN
8th	Linsey Eddy, OH	Westlake 0908	Danny Westlake, OH
9th	Emily Stevens, OH	Westlake 0910	Danny Westlake, OH
10th	Clark Coyle, KY	Poe 19028 AI	Poe Hampshires, IN
11th	Rachel Olver, PA	Fleener 1907	Fleener Hampshires, PA

** Note Morgan Hauger, IN Finished 5th with Poe 19113, but she can only receive futurity premium on two animals, so, others received premiums for the higher placing.

Slick Shorn Raised Division

	Name	Animal ID	Breeder
1st	Morgan Hauger, IN	Hauger 19010	Morgan & Maddie Hauger, IN
2nd	Morgan Hauger, IN	Hauger 19018	Morgan & Maddie Hauger, IN
3rd	Clark Coyle, KY	Terradise 9027	Campbell, Corbin & Clark Coyle, KY
4th	Brodie Payne, MO	Plaza Hamps 1474	Plaza Livestock, MO
5th	Ty Thorson, WI	Metro 1921	Ty Thorson, WI

Danielle Houghtaling and Mikara Anderson were recognized as 2019 AHSA scholarship recipients.

The back page of the Heartbeat was auctioned off by Scott Van Sickle. Spoonster Hampshires purchased it for \$850.00 dollars.

Questions that arose from members included having the AHSA select the judge for the All-American Junior Hampshire Show and not selecting overall champions between the fitted and slick Hampshires.

Morgan Hauger spoke briefly about the AJHSA and their plans for 2020.

Tom Bobendrier moved and Dina King seconded to adjourn the meeting. Meeting adjourned at 7:20 PM.

Respectfully submitted,
Jeff Ebert



SOUTH DAKOTA STATE UNIVERSITY

"Performance driven Hampshires with style!"

**LOOKING FORWARD TO ANOTHER
EXCITING LAMB CROP FOR 2020.**

Select offspring from Wheaton 6-189 and our newest sire UofWI 16-114 will be offered in our 10th Annual SDSU Hampshire Sale May 6th, 2020!



VISITORS WELCOME ANYTIME!

**THANK YOU TO ALL OF
OUR BUYERS IN 2019!
WE LOOK FORWARD TO
WHAT 2020 HAS IN STORE.**

WHEATON 6-189: BARELY LEGAL X WHEATON 8-075

FOR MORE INFORMATION:
Karolynn Marsan - UNIT MANAGER - CELL 208-661-4587

**NSIP EBV'S AVAILABLE FOR ALL LAMBS.
BE SURE TO FOLLOW US ON FACEBOOK FOR
FLOCK UPDATES AND PHOTOS**

INDEX TO HEARTBEAT ADVERTISERS

A	ADAMS COUNTY FAIRGROUNDS 12	C	CHAPIN HAMPS 12	H	HELD HAMPS 32
B	BAA BAA ACRES 60-61	F	FINDER 21	HEWLETT CLUMB LAMBS 52	HIGHLAND HAMPS 48
BANNER	69 & 74			HOWELL CLUB LAMBS 31	
BOBENDRIER BOYS	INSIDE			K	
BOBENDRIER HAMPSHIRE	FRONT COVER			KETCHAM'S 51	KING DIAMOND RANCH 46

KJELDGAARD 10	KJELDGAARD/WILLWERTH HAMPSHIRE 42	KLEINERT HAMPSHIRE 64	M	MARSHALL SHEEP COMPANY 44	MIDWEST STUD RAM SALE 22
N	NELSON HAMPSHIRE 8	NIEMEIER HAMPSHIRE 6	P	PETERSON SHEEP CO. 36-37	PINE LAWN FARMS 40
				PLAZA LIVESTOCK 61-62	PULLIN'S 68

R	RIKOW HAMPS	INSIDE BACK COVER
----------	-------------	-------------------

S	SELECT LIVESTOCK SERVICES 70	SOUTH DAKOTA STATE UNIVERSITY 73	SPONSTER HAMPS	BACK COVER
	STORMS HAMPSHIRE 62			

W	WESTLAKE HAMPSHIRE 24
----------	-----------------------

Plan to consign & attend the

GREAT LAKES SHOW & SALE

ENTRIES DUE MARCH 15!

WAYNE COUNTY FAIRGROUNDS • WOOSTER, OHIO

SHOW: 9:00 A.M. SATURDAY SHEEP SALE: 10:00 A.M. SUNDAY

MAY 23 MAY 24

Judge: Alex Wolf, OH Auctioneers: Gary Saylor & Danny Westlake, OH



2018 Grand Champion Hampshire Ewe, bred by Larry & Marcia Shell, sold to Thomas H. Baughman, OH



2019 Reserve Champion Hampshire Crossbred from Crystal Springs Club Lambs, sold to Wyatt Kerper, PA



Banner
Sale Management Service

ENTRIES AVAILABLE ONLINE!
Download entry information and free catalog or contact:

Used Equipment Sells at 9:00 a.m. Sunday in the FFA Building

Sale Headquarters: Wooster Best Western, 330/264-7750 or 866/264-2057; Rodeway Inn, 330/262-5008

Block Name: Sheep Sale. Call now for discount rate!

P.O. BOX 500 • CUBA, IL 61427 • 309/785-5058 • FAX: 309/785-5050 • www.bannersheepmagazine.com



Banner ©



TIFFT 337 "Victorious"

2019 National Champion Hampshire Ewe
2019 Supreme Ewe WI State Fair
Rich in Homeboy genetics!

RIKOW 1139 • 1st Fall Ewe Lamb 2019 NAILE and WI SF
Congrats to John and Brittany Alf on your success with this purchase from our 2019 Online Sale!

2020 Rikow Online Sale • Sunday • April 26
Join us on Integrity Livestock Sales!



Richard Krackow • Arcadia, WI • rkdrealt@trivest.net • PH: 608.343.2899

WE CANNOT ALWAYS BUILD

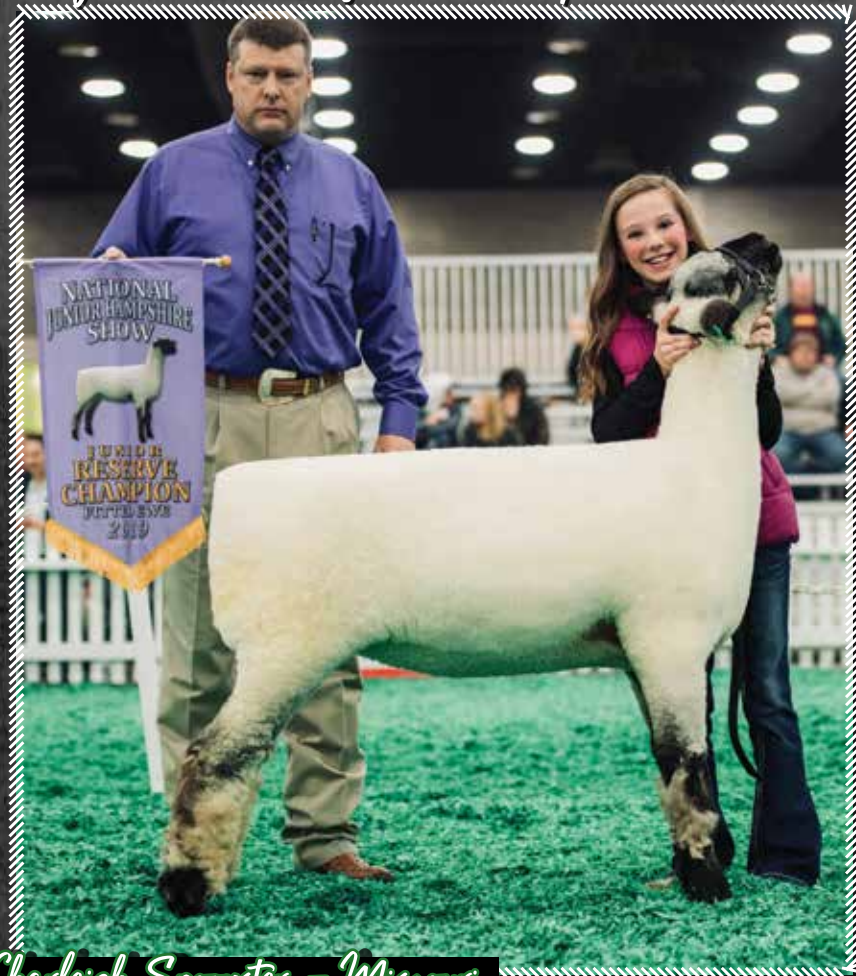
The future for our youth.

but we can build our youth

for the future.

- Franklin D. Roosevelt

Congrats to these future Hampshire leaders!



Charleigh Spoonster - Missouri

SPOONSTER 19-12

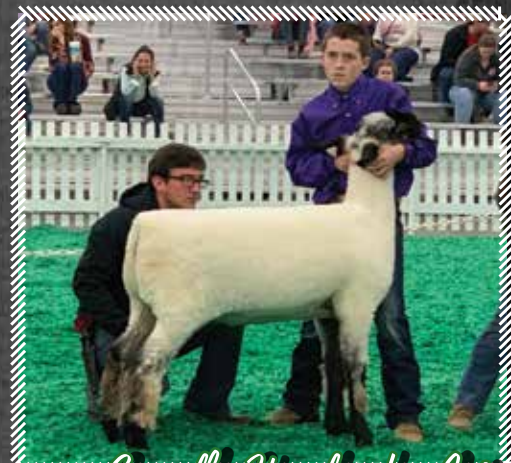
Reserve Champion Fitted Ewe 2019 NAILE Jr. Show
Sire: Spoonster Bragging Rights
1st Place AHSA Futurity Winner (Fitted & Raised Division)



Kendall Smith - Missouri

SPOONSTER 18-50

2nd Fall Ewe Lamb 2019 NAILE Jr. Show
Sire: BBA Insight
1st Place AHSA Futurity Winner (Fitted & Purchased Division)



Connelly Hoagland - Montana

SPOONSTER 19-11

5th Place March Ewe Lamb 2019 NAILE Jr. Show
Sire: Spoonster Bragging Rights
7th Place AHSA Futurity Winner (Fitted & Purchased Division)



Be sure to watch for our consignment to the Heart of a Champion Online Hampshire Sale!
THURSDAY, APRIL 23 / WLIVESTOCK.COM

Spoonster Hamps / The Spoonster Family / Eolia, MO / PH: 636.359.5487